

IMFLDP Call for Sites
Director of Planning and Development
Glenurquhart Road
Inverness
IV3 5NX

Direct Dial
Mobile



13th April 2011

For the attention of Tim Stott, Principal Planner

Dear Sir,

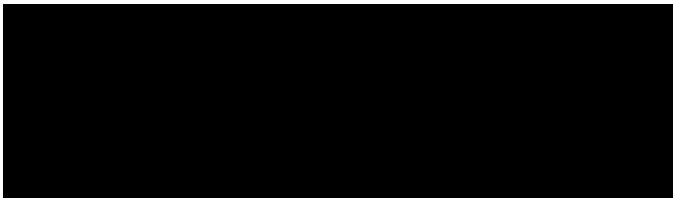
Inner Moray Firth – Call For Sites 2011

As one of the main minerals companies in the Highland Council Area, it is our opinion that any significant changes to the existing Highland Council minerals policies in the forthcoming Inner Moray Firth Development Plan may have major impacts on the local minerals industry. We consider the policies in the existing Local Plan and Structure Plan are fair and proportionate; recognising the importance of minerals to the local economy while following national guidelines and not imposing unreasonable planning implications on the minerals industry.

Leiths (Scotland) Limited would like to ensure that Achilty quarry near Contin is identified in the Inner Moray Firth Local Development Plan as an operating hard rock quarry.

Leiths have operated Achilty quarry since 1995 and have recently been granted planning permission for an extension to the quarry until the 31st March 2037 (pp. 06/00904/FULRC). Achilty quarry is a significant supplier of crushed rock aggregates, rock armour and coated products to projects throughout the Inner Moray Firth and Wester Ross areas. The quarry is an important employer in a rural area, contributing directly and indirectly to the local economy.

As previously discussed, can you please keep Leiths (Scotland) Limited informed throughout the local development plan consultation process.



Gordon Williamson
gwilliamson@leiths-group.co.uk

enc. Achilty Quarry Location Map

LEITHS (SCOTLAND) LIMITED

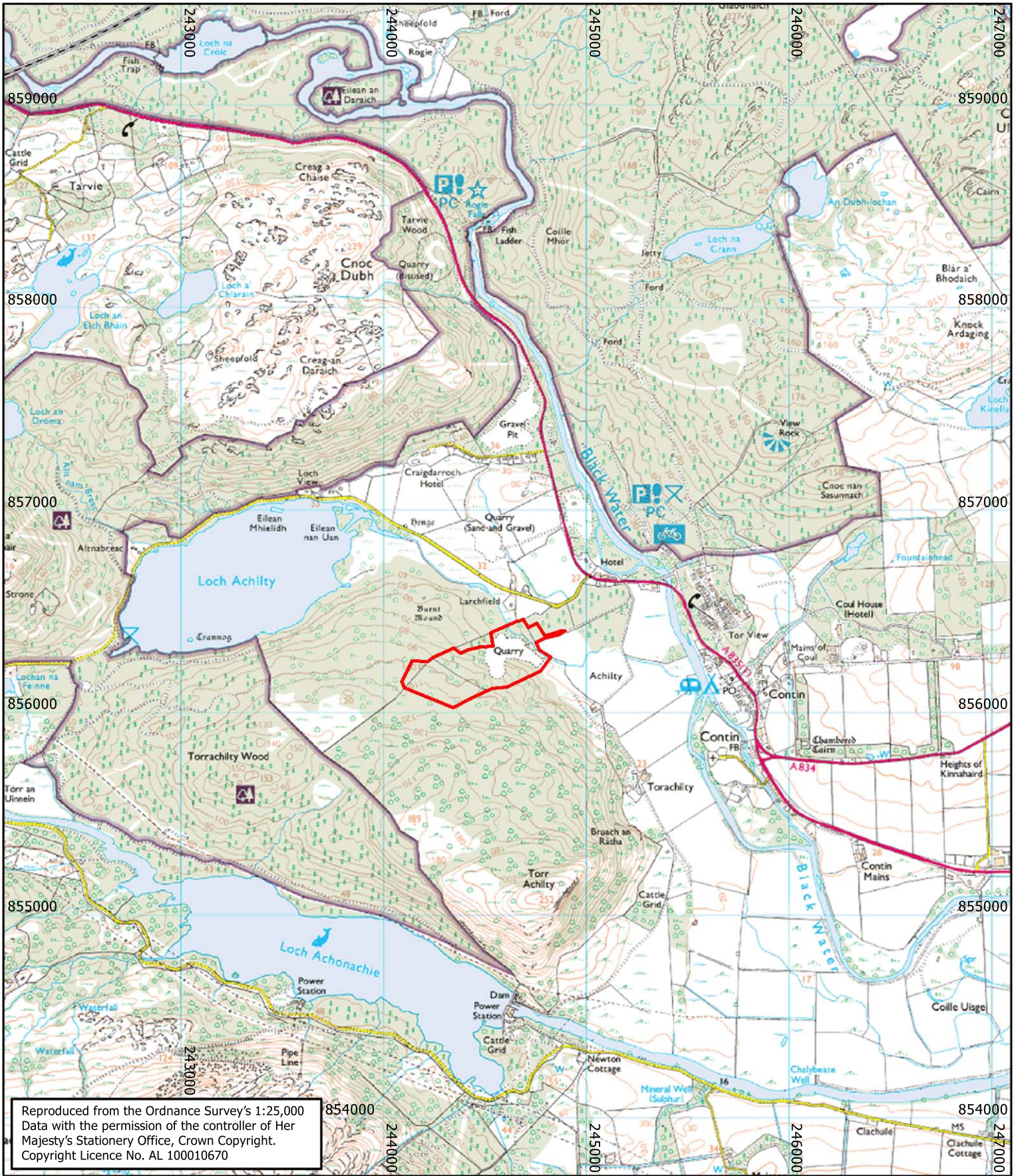
Rigifa • Cove • Aberdeen • AB12 3LR

Telephone: 01224 876333 • Fax: 01224 876332


www.leiths-group.co.uk • email: info@leiths-group.co.uk


Company Registration No. 62692 (Scotland)






LEGEND

 Planning Application Boundary

 DAL
DALGLEISH ASSOCIATES LIMITED

 LEITHS

Client: LEITHS (SCOTLAND) LTD.
Project: ACHILTY QUARRY
Title: GENERAL LOCATION PLAN

Scale: 1:25,000	Revision Date:
Date: 07.06.06	
Drawn: JHRW	Checked: WB

Dagleish Associates Ltd

ENVIRONMENTAL, MINERAL AND PLANNING CONSULTANTS

CATHEDRAL SQUARE
DUNBLANE FK15 0AH

Tel: 01786 822339
Fax: 01786 822899