

Uig Harbour Redevelopment

Community Liaison Meeting

21st March 2024



Summary of Works – Since last meeting

Marshalling Area	Approachway	Linkspan/Bankseat	Berthing Structure	Pierhead	Kingsburgh Quarry
<ul style="list-style-type: none"> • Installation of utilities. • Kerbing works. • Marshalling area Changeover. • Deep Drainage and Ducting Works. • Aggregate infill & Grading Works. • Drying out berth – Fendering, Ladder Install 	<ul style="list-style-type: none"> • Footpath removal and Permanent way works. • Completion of Greenheart fenders and timber Copes. • Installation of ladders to quay edge. • Installation of quay furniture & Handrails. • Kerbing and linear Drainage works. • Sheltered Walkway. • Spel Tank Installation. 	<ul style="list-style-type: none"> • Installation of Navigation lights. • Installation of handrails and gates. 	<ul style="list-style-type: none"> • Outer Roundhead Furniture. • Removal of Protection piles. • Completion of Fender installation. • Enabling works for Waiting Shelter. • Concrete Wavewall Installation. • Ground Slab and Deck Pour enabling works. • Copes and Ladders. 	<ul style="list-style-type: none"> • Installation of scaffolding. • Concrete Pile repair works. • Install quay furniture to deck area. • Hydro-Demolition Deck interfaces. • Concrete Reinstatement. • Timber Fendering. 	<ul style="list-style-type: none"> • Continued movement and storage of materials. • Organisation of materials.

Marshalling Area



- Kerbing works.
- Installation of utilities.
- Marshalling area Changeover.
- Deep Drainage and Ducting Works.
- Aggregate infill & Grading Works.
- Drying out berth – Fendering, Ladder Install



Approachway



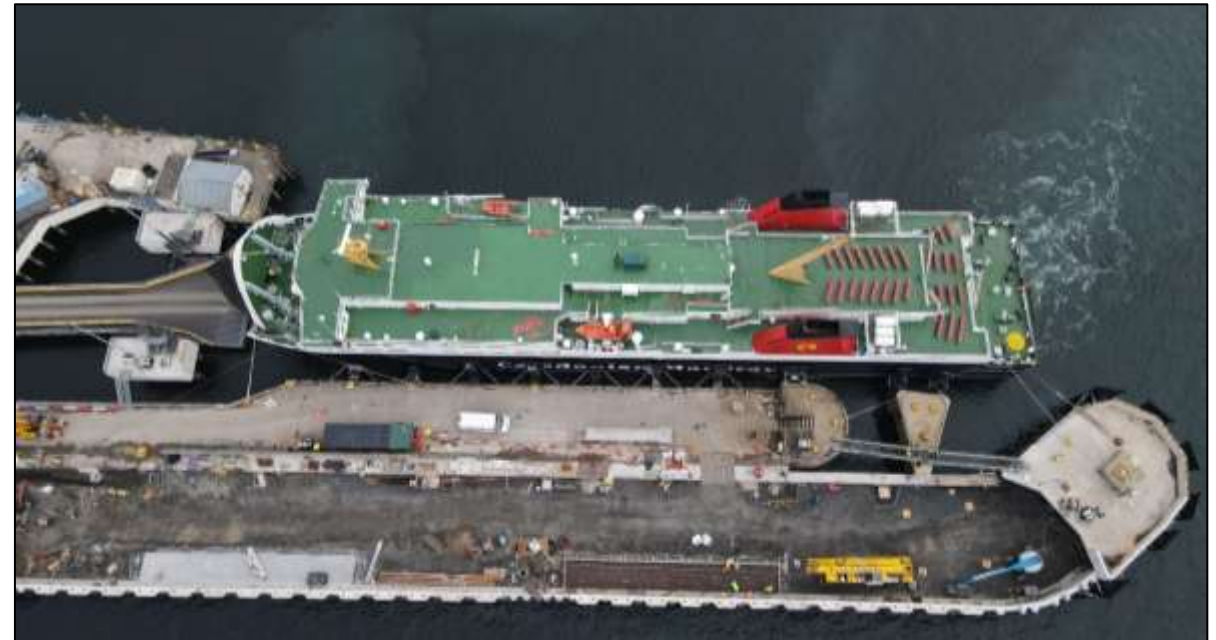
- Footpath removal and Permanent way works.
- Completion of Greenheart fenders and timber Copes.
- Installation of ladders to quay edge.
- Installation of quay furniture & Handrails.
- Kerbing and linear Drainage works.
- Sheltered Walkway.
- Spel Tank Installation.



Linkspan/Bankseat

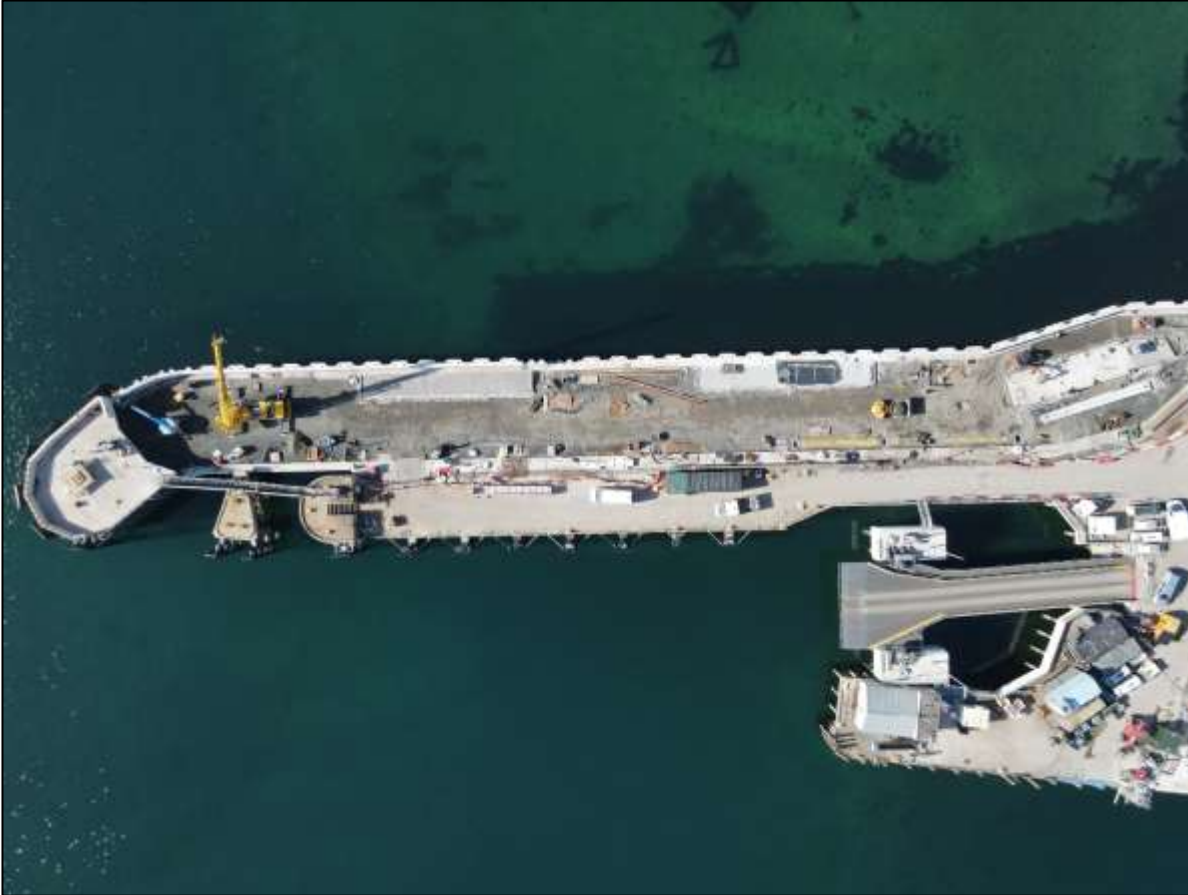


- Installation of Navigation lights.
- Installation of handrails and gates.



Berthing Trial – Isle of Lewis

Berthing Structure

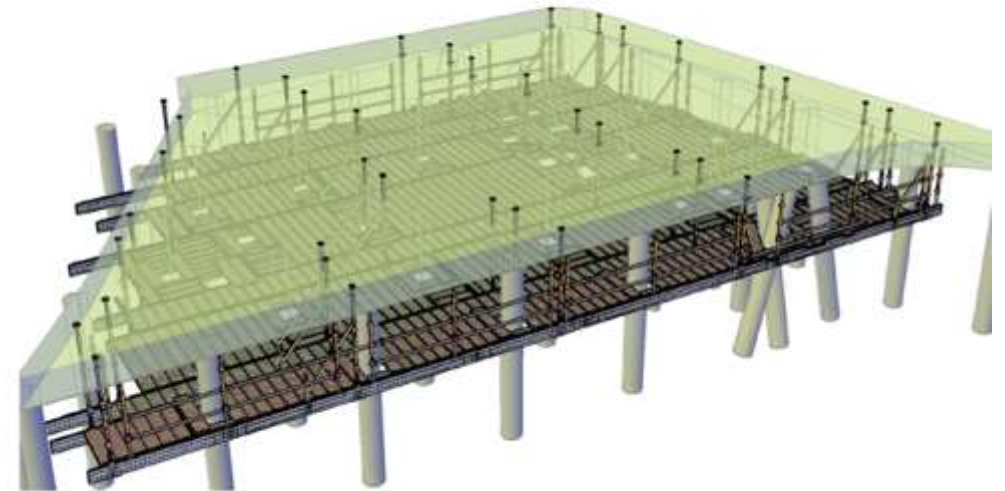


- Outer Roundhead Furniture.
- Removal of Protection piles.
- Completion of Fender installation.
- Enabling works for Waiting Shelter.
- Concrete Wavewall Installation.
- Concrete Copes to Wavewall.
- Ground Slab and Deck Pour enabling works.
- Copes and Ladders.

Pierhead



- Concrete Pile repair works.
- Installation of scaffolding.
- Install quay furniture to deck area.
- Hydro-Demolition Deck interfaces.
- Concrete Reinstatement.
- Timber Fendering.



Pierhead – Pile Repair.



Identified Pile – repair determined.



Fractured Concrete removed by hydro-dem method and reinforcing increased



New spray on concrete formed to pile diameter.



Denso wrapping applied to further protect the repair.

Kingsburgh Quarry



- Organisation of materials.
- Continued movement and storage of materials.

Planned works

- Continuation of Marshalling area works and hardscaping.
- Concrete works to berthing structure slabs.
- Services to approachway and footpath works.
- Installation of walkway shelter.
- Construction of passenger Waiting Shelter – Berthing Structure
- Complete pierhead strengthening works.
- Scour Mattress Design and Installation.
- Quarry works.

Community Benefits

- Contracting with firms and supply chain with over £1.3M Skye and Lochalsh.
- Estimated local spend £360,000.
- Engagement with schools, talks and business breakfasts to Kilmuir, Staffin, Plockton and Portree.
- Staff are actively involved with school groups for Climbing, Hockey and Orienteering.
- Engaging with the job centre regarding future positions.
- Staff and the site involved with fundraising and charity events.
- Sponsored Schools Orienteering Competition.
- Employed Student Engineer on Site.
- STEM events at Plockton High School.
- Site visit by Portree High School.
- CLG Site Visit.
- Donation of Pontoon to Staffin Harbour Trust.
- £500 Donation to Lifeboat.
- Lunches provided by Local Catering.
- Christmas Works Event – Local Hotels.
- Donation to Skye Adventure.

Any Questions

