

# Uig Harbour Redevelopment

Community Liaison Meeting

2<sup>nd</sup> May 2024



# Summary of Works – Since last meeting

Marshalling Area	Approachway	Linkspan/Bankseat	Berthing Structure	Pierhead	Kingsburgh Quarry
<ul style="list-style-type: none"> <li>• Installation of utilities.</li> <li>• Kerbing works.</li> <li>• Streetlighting Installation.</li> <li>• Drainage &amp; Gulleys.</li> <li>• Aggregate infill &amp; Grading Works.</li> <li>• Drying out berth – Fendering, Ladder Install.</li> </ul>	<ul style="list-style-type: none"> <li>• Walkway Shelter Installation</li> <li>• Fender Deflectors.</li> <li>• Installation of ladders to quay edge.</li> <li>• Fender Rubbing Strips.</li> <li>• Concrete Deck Installation.</li> <li>• Installation of quay furniture &amp; Handrails.</li> <li>• Kerbing and linear Drainage works.</li> <li>• Hydro-Demolition Deck interfaces.</li> </ul>	<ul style="list-style-type: none"> <li>• Routine Inspection.</li> <li>• Installation of handrails and gates.</li> </ul>	<ul style="list-style-type: none"> <li>• Outer Roundhead Furniture.</li> <li>• Concrete Cope Installation.</li> <li>• Concrete Deck Works.</li> <li>• Walkway Shelter Installation.</li> <li>• Timber Cope Installation.</li> <li>• Services &amp; Ducting</li> <li>• Waiting Shelter Building.</li> </ul>	<ul style="list-style-type: none"> <li>• Removal of scaffolding.</li> <li>• Pile Protection.</li> <li>• Quay Furniture Work.</li> <li>• Timber Fendering.</li> <li>• Concrete Reinstatement.</li> </ul>	<ul style="list-style-type: none"> <li>• Continued movement and storage of materials.</li> <li>• Organisation of materials.</li> </ul>

# Marshalling Area



- Kerbing works.
- Installation of utilities.
- Streetlighting Installation.
- Drainage & Gulleys.
- Aggregate infill & Grading Works.
- Drying out berth – Fendering, Ladder Install.



## Approachway



- Walkway Shelter Installation.
- Fender Deflectors.
- Installation of ladders to quay edge.
- Fender Rubbing Strips.
- Concrete Deck Installation.
- Installation of quay furniture & Handrails.
- Kerbing and linear Drainage works.
- Hydro-Demolition Deck interfaces.

# Linkspan/Bankseat



- Routine Inspection.
- Installation of handrails and gates.

# Berthing Structure

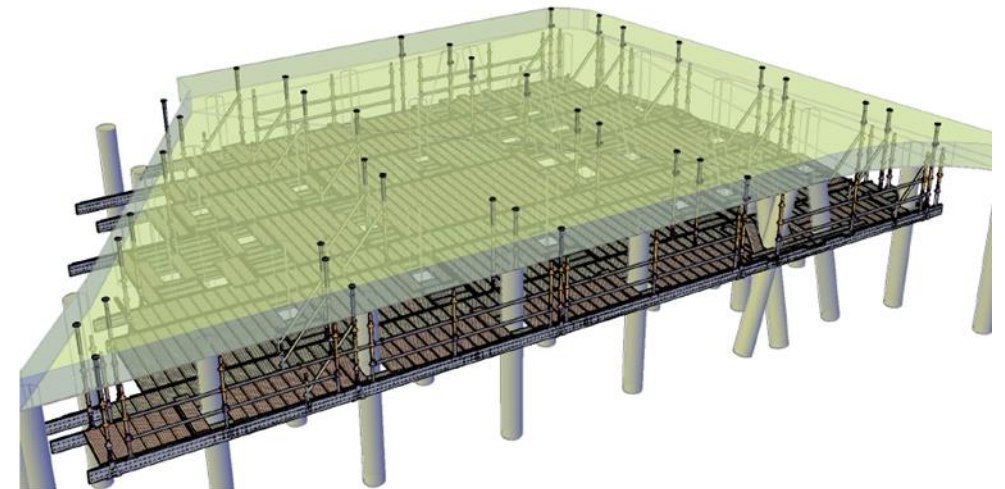


- Outer Roundhead Furniture.
- Concrete Cope Installation.
- Concrete Deck Works.
- Walkway Shelter Installation.
- Timber Cope Installation.
- Services & Ducting
- Waiting Shelter Building.

# Pierhead



- Pile Protection.
- Removal of scaffolding.
- Quay Furniture Work.
- Timber Fendering.
- Concrete Reinstatement.



# Kingsburgh Quarry



- Organisation of materials.
- Continued movement and storage of materials.



## Planned works

- Continuation of Marshalling area works and hardscaping.
- Installation of Lighting columns.
- Concrete works to berthing structure slabs.
- Services to approachway and footpath works.
- Installation of walkway shelter.
- Construction of passenger Waiting Shelter – Berthing Structure.
- Complete pierhead strengthening works.
- Scour Mattress Design and Installation.
- Quarry works.

## Community Benefits

- Contracting with firms and supply chain with over £1.5M Skye and Lochalsh.
- Engagement with schools, talks and business breakfasts to Kilmuir, Staffin, Plockton and Portree.
- Staff are actively involved with school groups for Climbing, Hockey and Orienteering.
- Engaging with the job centre regarding future positions.
- Staff and the site involved with fundraising and charity events.
- Sponsored Schools Orienteering Competition.
- Employed Student Engineer on Site.
- STEM events at Plockton High School.
- Site visit by Portree High School.
- CLG Site Visit.
- Donation of Pontoon to Staffin Harbour Trust.
- £500 Donation to Lifeboat.
- Lunches provided by Local Catering.
- Christmas Works Event – Local Hotels.
- Donation to Skye Adventure.

# Any Questions



