

Uig Harbour Redevelopment

Community Liaison Meeting

20th June 2024



Summary of Works – Since last meeting.

Marshalling Area	Approachway	Berthing Structure	Pierhead	Kingsburgh Quarry
<ul style="list-style-type: none"> • Installation of utilities. • Kerbing works. • Streetlighting Installation. • Drainage & Gulleys. • Aggregate infill & Grading Works. • Surfacing • Cable Pulling. • Fisherman's Compound - Transfer 	<ul style="list-style-type: none"> • Walkway Shelter Installation • Fender Deflectors. • Installation of ladders to quay edge. • Concrete Deck Installation. • Traffic Route Changeover. • Lighting Columns Installation • Theoflex Jointing. 	<ul style="list-style-type: none"> • Concrete Deck Works. • Walkway Shelter Installation. • Timber Cope Installation. • Waiting Shelter Building. • Linear Drainage Installation. • Bollard Installation. 	<ul style="list-style-type: none"> • Pile Protection. • Timber Fendering. • Quay Furniture Work. • Concrete Reinstatement. 	<ul style="list-style-type: none"> • Continued movement and storage of materials. • Organisation of materials.

Marshalling Area



- Installation of utilities.
- Kerbing works.
- Streetlighting Installation.
- Drainage & Gulleys.
- Aggregate infill & Grading Works.
- Surfacing
- Cable Pulling.
- Fisherman's Compound - Transfer

Approachway



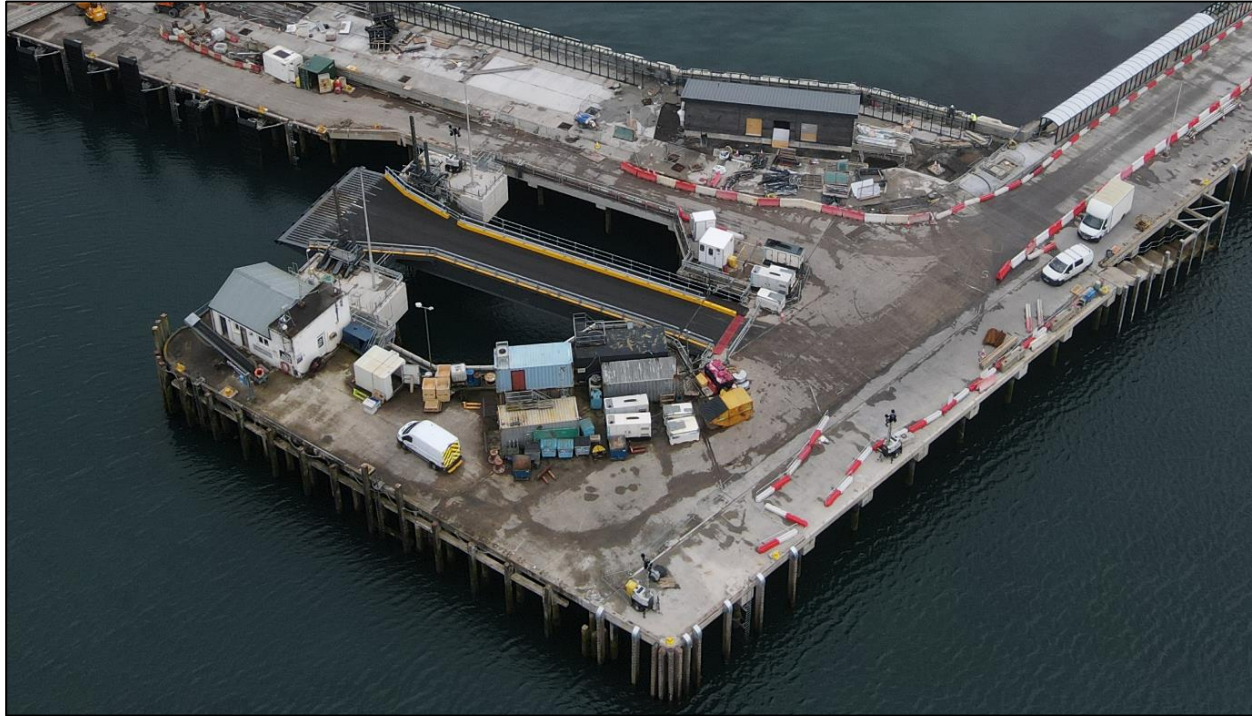
- Walkway Shelter Installation.
- Fender Deflectors.
- Installation of ladders to quay edge.
- Concrete Deck Installation.
- Traffic Route Changeover.
- Lighting Columns Installation
- Jointing.

Berthing Structure

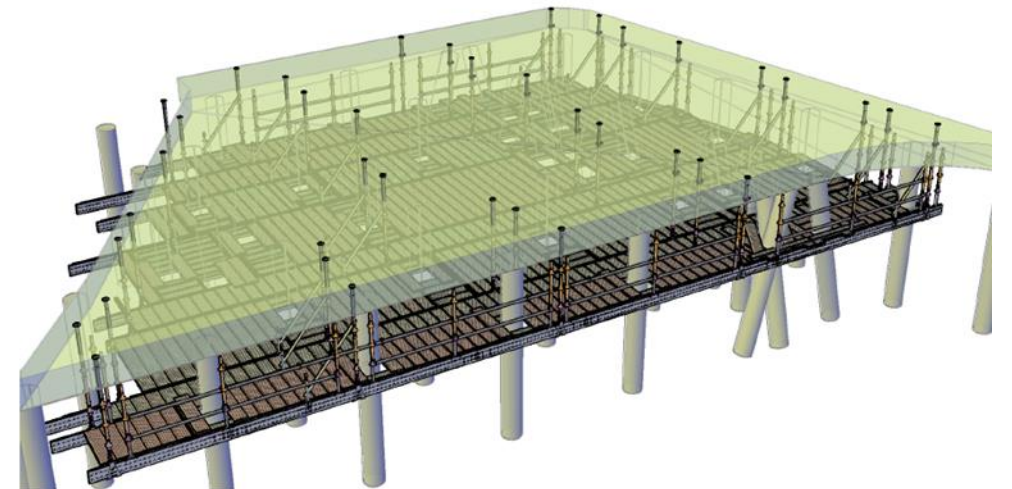


- Concrete Deck Works.
- Walkway Shelter Installation.
- Timber Cope Installation.
- Waiting Shelter Building.
- Linear Drainage Installation.
- Bollard Installation.

Pierhead



- Pile Protection.
- Timber Fendering.
- Quay Furniture Work.
- Concrete Reinstatement.



Kingsburgh Quarry



- Organisation of materials.
- Continued movement and storage of materials.

Planned works

- Continuation of Marshalling area works and hardscaping.
- Installation of Lighting columns – Berthing Structure
- Services to approachway and footpath works.
- Completion of walkway shelter.
- Construction of passenger Waiting Shelter – Berthing Structure.
- Complete pierhead strengthening works.
- Scour Mattress Design and Installation.
- M&E Work.
- Quarry works.
- Cathodic Protection – Design & installation.
- Signage Works.

Community Benefits

- Contracting with firms and supply chain with over £1.5M Skye and Lochalsh.
- Engagement with schools, talks and business breakfasts to Kilmuir, Staffin, Plockton and Portree.
- Staff are actively involved with school groups for Climbing, Hockey and Orienteering.
- Engaging with the job centre regarding future positions.
- Staff and the site involved with fundraising and charity events.
- Sponsored Schools Orienteering Competition.
- Employed Student Engineer on Site.
- STEM events at Plockton High School.
- Site visit by Portree High School.
- CLG Site Visit.
- Donation of Pontoon to Staffin Harbour Trust.
- £500 Donation to Lifeboat.
- Lunches provided by Local Catering.
- Christmas Works Event – Local Hotels.
- Donation to Skye Adventure.
- Assisting Local Community Hall.
- Assisting with loading/unloading of equipment – Harbour Users.
- Inspection of footbridge and report – Uig Community.
- Local high school visit.

Any Questions

