

Appendix 2 – Baseline Information and Maps

The information and maps in this section represent baseline data at a Highland wide Level. Date of data noted where known, otherwise taken as June 2010.

While some of the information below may not be directly relevant it helped to scope the environmental issues which may be relevant to this guidance.

Maps Contained in this Section are:

- Cairngorms National Park
- Core Path Network
- Highland Cycle Network (updated)
- Population Change 1998-2007
- Highland Flood Risk
- Highland Forest and Woodland Strategy
- Fragile Areas
- Listed Buildings
- Local Nature Reserves
- National Nature Reserves
- National Scenic Areas
- Ramsar Sites
- Special Areas of Conservation
- Special Protection Areas
- Sites of Special Scientific Interest
- Settlement Hierarchy.

Baseline Data by SEA Topic

Population and Human Health	Key Information	Data Source
	Incidence of Coronary Heart Disease in Highland is 304 cases per 100,000 (Scotland – 306) for year ending 31 Dec 2006. 1997 figure was 396.	www.isdscotland.org
	Highland wide in 2006 22 pedestrians and 5 cyclists were killed or serious injured in road accidents. 1994-98 yearly averages are 38 pedestrian and 16 cyclist fatalities.	www.scotland.gov.uk
	11 health-related walking groups operating in PPS area.	www.stepituphighland.org.uk
	50% of Highland population walked a least on one day in the past week with the main aim been as a mode of transport (Scotland 53%). 64% walked at least one day in the past week just for pleasure or to keep fit (Scotland 46%).	SHS Transport Across Scotland 2005-2006
	208, 914 people living in Highland.	Census 2001 http://195.173.143.171/plintra/iandr/cen/prof_high.htm
	Highlands population is projected to increase by 3.6% by 2024. There is expected to be 16, 029 more people of retirement age and 5507 fewer children than in 2004. therefore the population is expected to age.	Highland Council population Projections 2004-2024 http://www.highland.gov.uk/NR/rdonlyres/20D86A3A-5750-42B3-927D-21000CD24694/0/bn8popproj.pdf
	45% of Highland households are within 3mins. walking distance of a bus stop (Scotland 55%) but with 20% having frequency of services of less than 1 bus per hour (Scotland 4%). 12% of the population in Highland had used a train in the past month (Scotland 19%). <i>SHS Transport Across Scotland 2005 – 2006.</i>	SHS Transport Across Scotland 2005 - 2006
	The adopted Local Plans and	The Highland Council Adopted Local Plans and

	emerging Highland wide Local Development Plan allocate approximately significant land for new development of a range of types. For detail see each individual local plans.	emerging Highland wide Local Development Plan
Material Assets	Key Information	Data Source
Housing	There are 13, 329 housing units available in Highland between 2007 -2011 Supply of Affordable housing	The Highland Council housing land Audit 2006 http://www.highland.gov.uk/NR/rdonlyres/B3104D9D-838A-42F1-B679-AE682078AE23/0/briefingnote24.pdf Highland Council Affordable housing policy: http://www.highland.gov.uk/NR/rdonlyres/3098EF9A-20A2-46A4-ACD4-B05FEBCFCBE0/0/dppgaffordablehousing.pdf
House Sales	A quarter of all house sales in highland are to people from out with the area.	Highland Council Paper – House Sales – What do they tell us about migration in Highland. http://www.highland.gov.uk/NR/rdonlyres/7C0C7DCA-0AB6-4EAE-B6C6-C33A0E03BA52/0/bn2.pdf
Libraries	42 establishments containing a library	Highland Council Housing and Property data files
Renewable Energy Installations	Renewable Energy Installation account for 536.25kW of Highland Council Energy use.	Highland Council Energy Management and Performance Plan.
Water Treatment Works	Number of water treatments works in Highland. Investment in future.	Scottish Water Strategic Asset Capacity and Development Plan (2006); http://www.scottishwater.co.uk/portal/page/portal/SW_PAGE_GROUP_PS_ADMIN/SW_PUB_SCHEME_ADMIN_HOLDING/TAB65572/RELEASED%20STRATEGIC%20CAPACITY%20AND%20DEVELOPMENT%20PLAN%20MARCH%202006%20V2.pdf Scottish Waters Vision for Highlands 2010; http://www.scottishwater.co.uk/portal/page/portal/SWE_PGP_INVESTMENT/SWE_PGE_INVESTMENT/SWE_INV_HIGH_2010
Footpath networks	Proportion of population living within 200m of a footpath. The core paths plan is yet to be completed but this information will be added to the baseline data when the plans are adopted, Summer 2008. There are: 3362km of Rights of ways, 3959km of promoted paths and 8831km of other paths in Highland.	The Highland Councils Core Path Plan.
Cycle paths	Number of designated cycle routes in Highland	Sustrans National Cycle Network Map; http://www.sustrans.org.uk/webfiles/general/su

		strans_2008_ncn_map.pdf
Listed Buildings	A Listed - 186 B Listed - 1667 C(S) Listed - 1161	Historic Scotland GIS Dataset
Schedule Monuments	Total Number of Schedule Monuments in Highland is 1237	Historic Scotland GIS Dataset
Inventory Gardens and Designed Landscapes	Total Number of Inventory Gardens and Designed Landscapes	Historic Scotland GIS Dataset
Climate Factors	Key Information	Data Source
Reduce vulnerability to effects of climate change.	Areas affected by flooding/costs (sea) Areas affected by flooding (river) Priority Species Impact on Natural Resources Impact on Provision of Services/cost to Council	UKCIP08 The climate of the United Kingdom and recent trends. www.ukcip08.org.uk SEPA flood maps www.sepa.org.uk SCCIP pilot project LCLIP. www.sccip.org.uk Marine Climate Change Impacts Partnership.
Number of Air Quality Management Areas (AQMA) in Highland	None at present	http://www.scottishairquality.co.uk/
Reduce the need to travel.	Number of people travelling to work/study by various means of transport.	Local Transport Strategy http://www.highland.gov.uk/yourenvironment/roadsandtransport/transportplanning/localtransportstrategy.htm
Increase potential use of public transport.	Number of staff choosing public transport for commuting and business travel. Staff training and awareness. Number of School Travel plans Number of Office Travel Plans	This should be monitored through the Highland Council green travel plan which is currently under development, Local Transport Strategy http://www.highland.gov.uk/yourenvironment/roadsandtransport/transportplanning/localtransportstrategy.htm
Water	Key Information	Data Source
Avoid impact to and where possible enhance the water environment.	Number of rivers/lochs in good Ecological Condition.	EU Water Framework Directive. Highland Biodiversity Action plan SEPA Scottish Water River Basin Management Plan for Scotland Area River Basin Management Plans (North East, North Highland and West Highland).
Flooding likelihood	Vulnerability of Highlands communities to flooding.	Scottish Government: the Future of Flood risk Management in Scotland: http://www.scotland.gov.uk/Topics/Environment/Water/Flooding/Consultation UKCIP08: www.ukcip08.org.uk
Existing flood defences		Office of Science and technology (2005) Foresight report: <i>Future Flooding Scotland</i> . http://www.foresight.gov.uk/Previous_Projects/

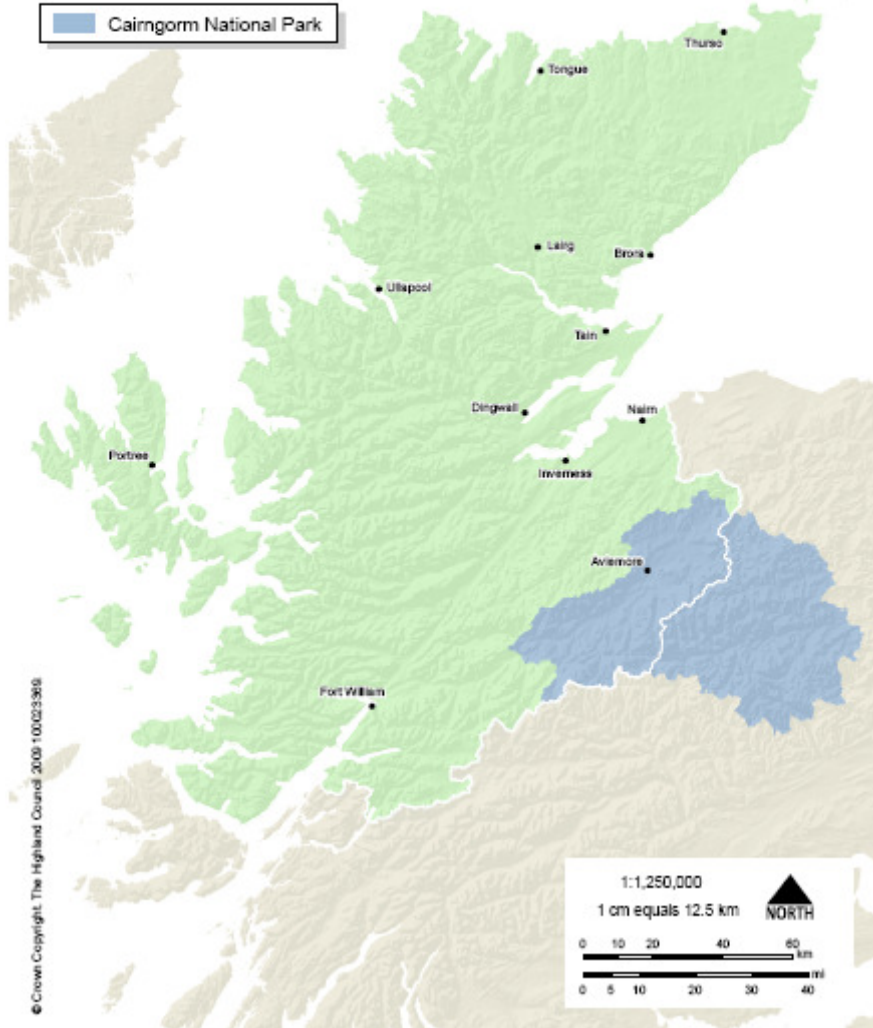
		Flood and Coastal Defence/Reports and Publications/Scotland/final_scotland.pdf
Pumping Stations and Sewage Works		Scottish Water (2006) Strategic Asset Capacity and Development Plan; http://www.scottishwater.co.uk/portal/page/portal/SW_PAGE_GROUP_PS_ADMIN/SW_PUB_SCHEME_ADMIN_HOLDING/TAB65572/RELEASED%20STRATEGIC%20CAPACITY%20AND%20DEVELOPMENT%20PLAN%20MARCH%202006%20V2.pdf
Water Quality		SEPA Water Quality Classifications: http://www.sepa.org.uk/pdf/data/classification/water_qual_class_2006.pdf Scottish Executives Bathing Water Strategy: http://www.scotland.gov.uk/Publications/2006/03/23151924/0 Scottish Executives Statistics - Environment:
Hydro-power	80 Hydro-powered stations in Highlands and islands	http://www.hi-energy.org.uk/hydroenergy.html
Ground Water and River Levels		Centre for Hydrology and Ecology. National Water Archive; http://www.ceh.ac.uk/data/NWA.htm
Soil & Waste	Key Information	Data Source
Erosion	Distance and numbers of path where erosion or poor path construction has or is reducing soil quality and quantity. No data available but possible monitoring of core paths in the future can be used.	The Highland Council Core Paths Plan (to be adopted in summer 2008)
Contaminated Land	Number of sites of Contaminated land in Highland Area of Contaminated Land (ha) in Highland	Highland Council Contaminated Land Database.
Cultural Heritage	Key Information	Data Source
Value and protect diversity and local distinctiveness.	Townscape Quality 16 National Scenic Areas found in Highland Region	A96 Development Framework: http://www.highland.gov.uk/NR/rdonlyres/7297B608-64F3-478C-AC10-4CEABF3595C1/0/A96DevelopmentFramework.pdf www.snh.org.uk Inverness City Vision: http://www.highland.gov.uk/NR/rdonlyres/6E3C5D49-3E28-49D9-AC41-711ADDABA265/0/InvernessCityVision.pdf

	There are 52 areas in highland listed in the inventory of Gardens and Designated Landscapes.	www.snh.org.uk SNH (2004) facts and figures.
Landscape	Key Information	Data Source
Retain and improve quality and quantity of publicly accessible open space.	Landscape Character Provision of Open Space in Highland is approx. 1354ha.	<p>Scottish Natural Heritage: <u><i>Overview of Scotland's national programme of Landscape Character Assessment (2004)</i></u></p> <p>Scottish Natural Heritage (1996) <i>Cairngorms landscape assessment.</i></p> <p>Scottish Natural Heritage (1998) <u><i>Inner Moray Firth Landscape Character Assessment.</i></u></p> <p>Scottish Natural Heritage (1999) <u><i>Ben Alder, Ardverikie and Creag Meagaidh Landscape Character Assessment</i></u></p> <p>Scottish Natural Heritage (1998) <u><i>Inverness District Landscape Character Assessment</i></u></p> <p>Scottish Natural Heritage (1998) <u><i>Moray and Nairn Landscape Character Assessment</i></u></p> <p>Scottish Natural Heritage (1998) <i>Caithness and Sutherland Landscape Character Assessment.</i></p> <p>Scottish Natural Heritage (1996) <i>Skye and Lochalsh Landscape Character Assessment.</i></p> <p>Scottish Natural Heritage (1998) <i>Lochaber Landscape Character Assessment.</i></p> <p>Scottish Natural Heritage (1999) <i>Ross and Cromarty Landscape Character Assessment.</i></p> <p>Draft Highland Green Space Audit (2011) Inverness Green Space Audit (2005 – updated 2007) GreenInverness Greenspace Strategy (2005)</p>
Peatlands	Proportion of peat land in Caithness and Sutherland.	SNH; http://www.snh.org.uk/scottish/nhighland/Peatlands/CSI.asp
Forest and Woodland		<p>The Highland Forest and Woodland strategy.</p> <p>http://www.highland.gov.uk/yourenvironment/agriculturefisheriesandforestry/treesandforestry/highland-forest-and-woodland-strategy.htm</p> <p>Forestry Commission Scotland; http://www.forestry.gov.uk/scotland</p>

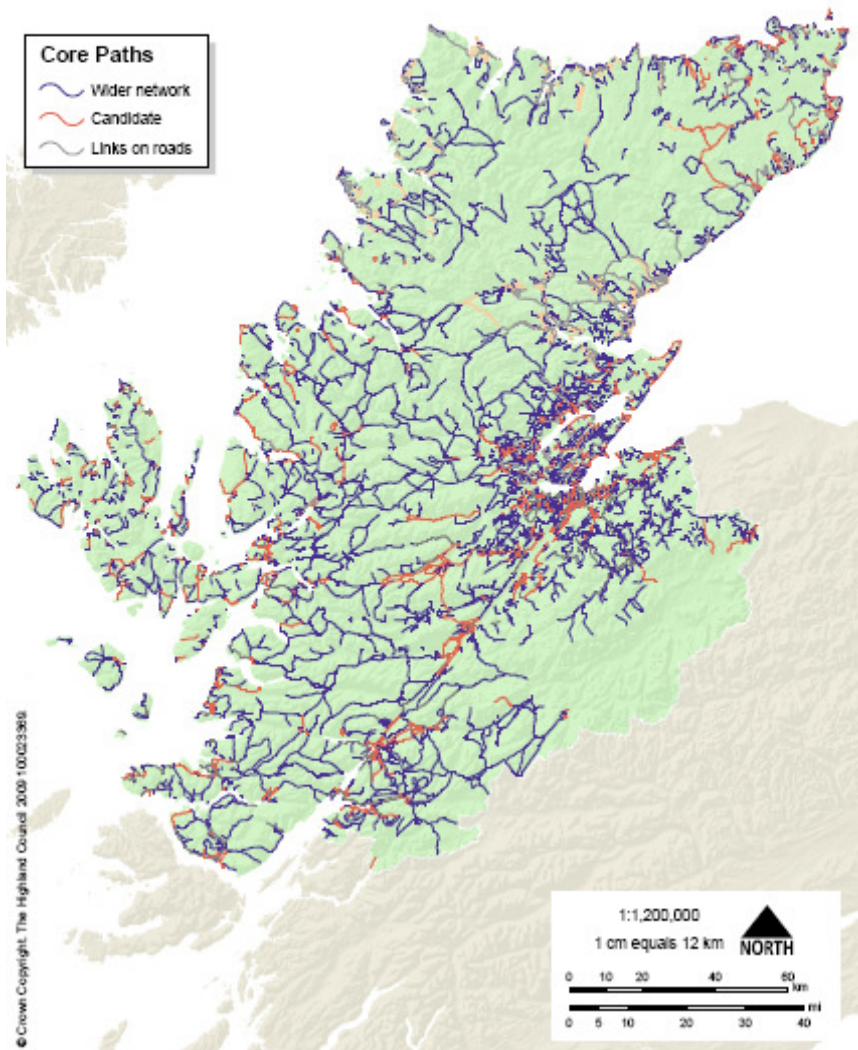
Agricultural Land	Land use, employment and production information. Crofting in Highland	National Farmers Union Scotland; http://www.nfus.org.uk/facts_index.asp Crofters Commission Annual report 2006/07; http://www.crofterscommission.org.uk/documents/croft-englishfinalreport0607.pdf
Coast	Biodiversity Number, type and specification of harbours in Highland.	Highland Biodiversity Action Plan www.highland.gov.uk http://www.highland.gov.uk/yourenvironment/roadsandtransport/harbours/
Biodiversity, Flora and Fauna	Key information	Data Source
Protect, enhance and where necessary restore designated wildlife sites and protected species	There are currently 12 RAMSAR sites, 90 SAC's, 46 SPA's, 368 SSSI's, 12 NNR's, 1 LNR,	www.snh.org.uk
	The Cairngorms National Park extends into Badenoch and Strathspey which is within the Highland Council area.	www.cairngorms.co.uk
Improve biodiversity, avoiding irreversible losses.	Highland region supports 192 of the 238 priority species in Scotland and 40 of the 42 priority habitats. 455 of the priority species of conservation importance are found in Highland.	Highland Biodiversity Action Plan www.highlandbiodiversity.com Habitat and Birds Directive – Annex 1
Provide appropriate opportunities for people to come into contact with and appreciate wild life and wild places.	Proportion of population living within 200m of a footpath. The core paths plan is yet to be completed but this information will be added to the baseline data when the plans are adopted, Summer 2008.	The Highland Councils Core path plan.
	Site condition monitoring database being produced by SNH will provide information on the condition of designated sites, 2000-2005, including recreational pressures but this database is not yet operational to provide this data.	SNH
Green Networks Habitat Mapping in A96 Corridor		MLURI Land Cover Maps SWT Phase 1 Habitats Surveys Ancient Woodland Inventory National Biodiversity Network Species Record.

Highland Wide Local Development Plan

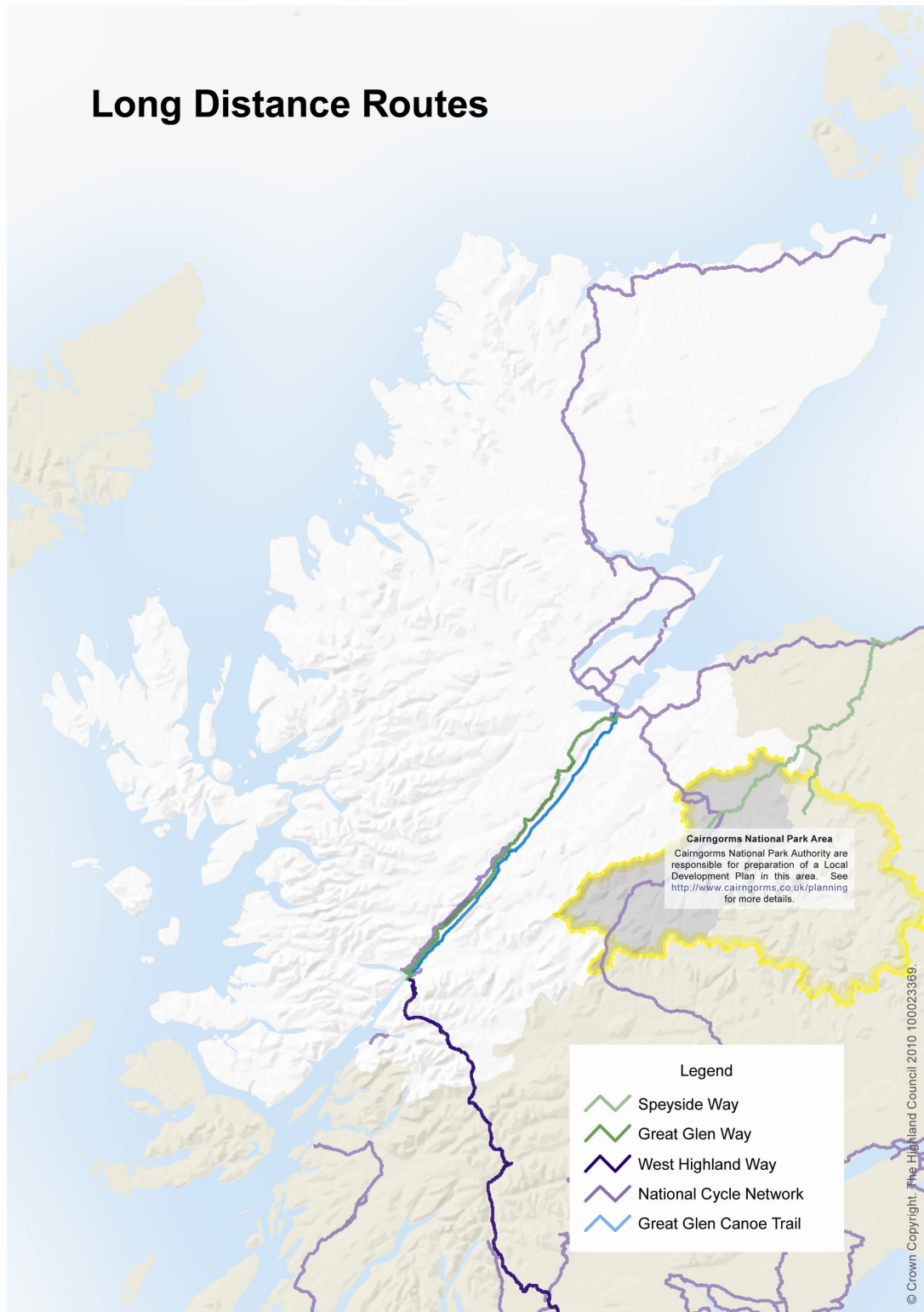
Cairngorm National Park



Highland Wide Local Development Plan Core Paths Network

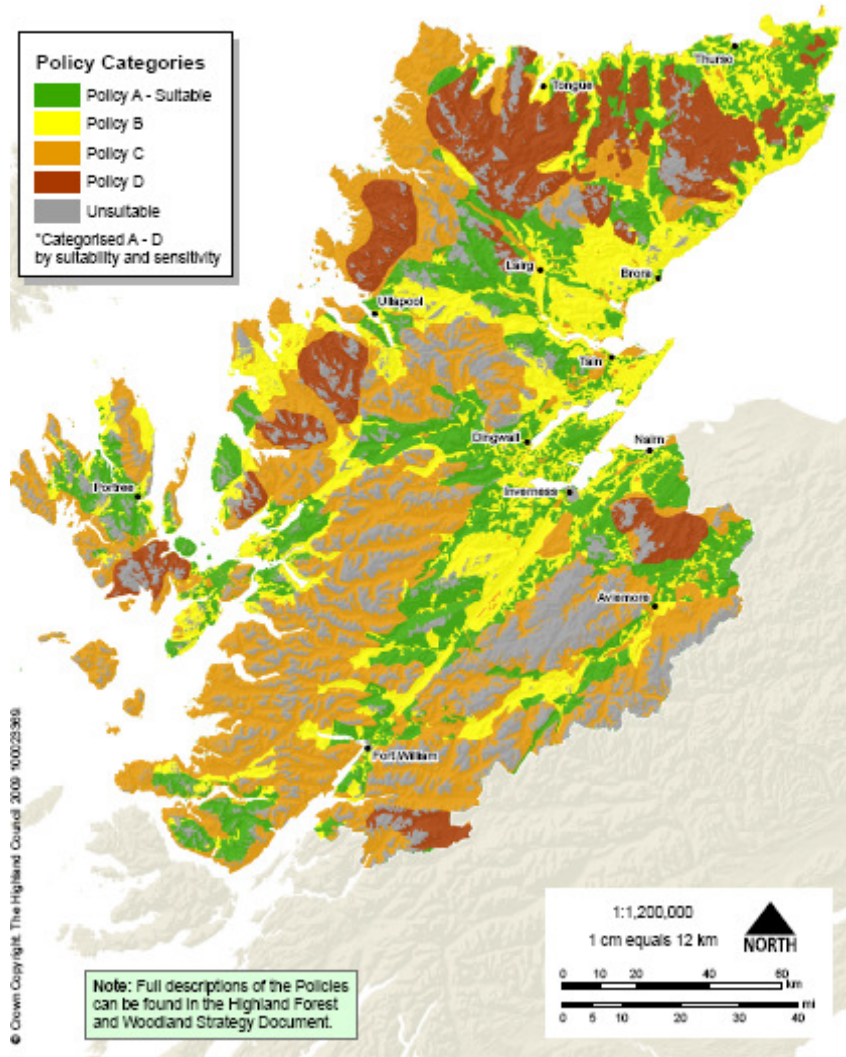


Long Distance Routes

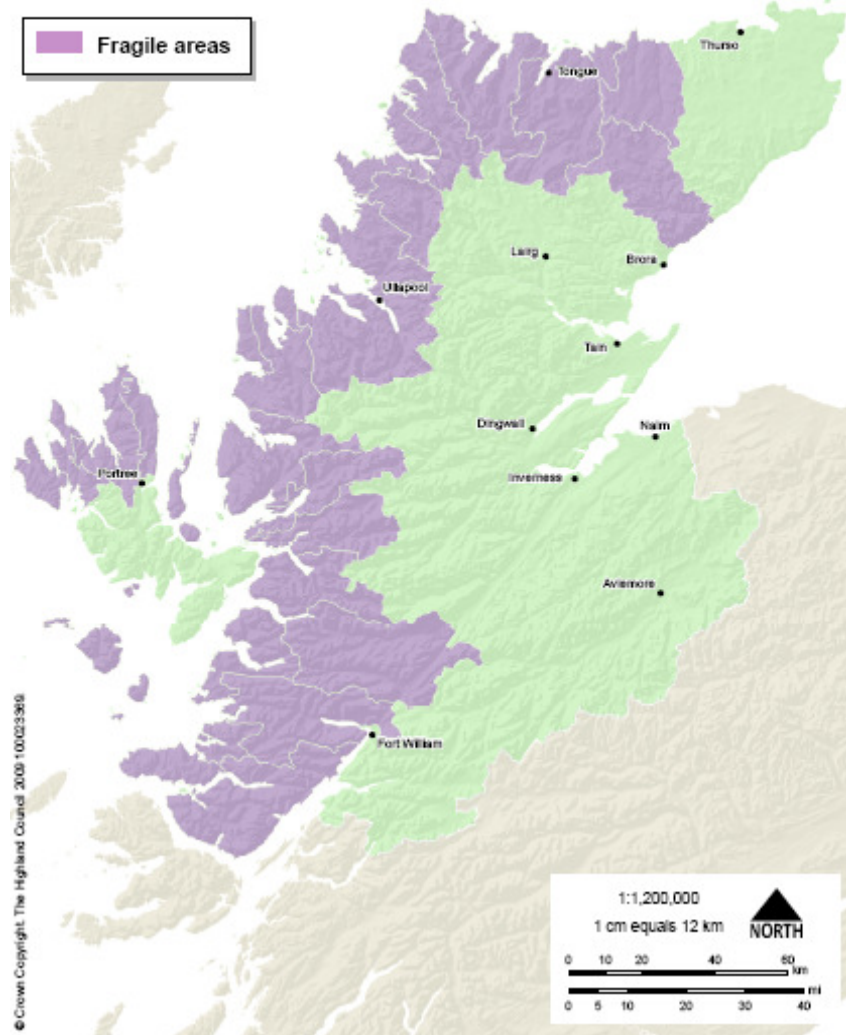


Highland Wide Local Development Plan

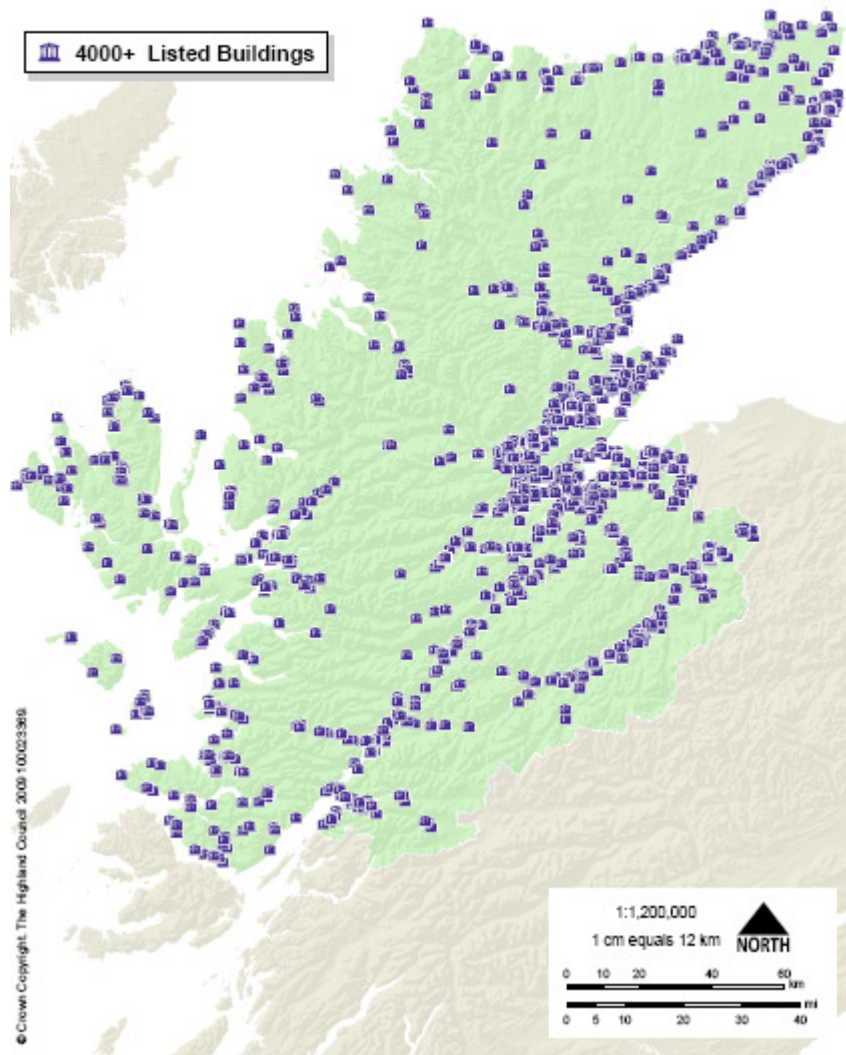
Highland Forest and Woodland Strategy



Highland Wide Local Development Plan *Fragile Areas*

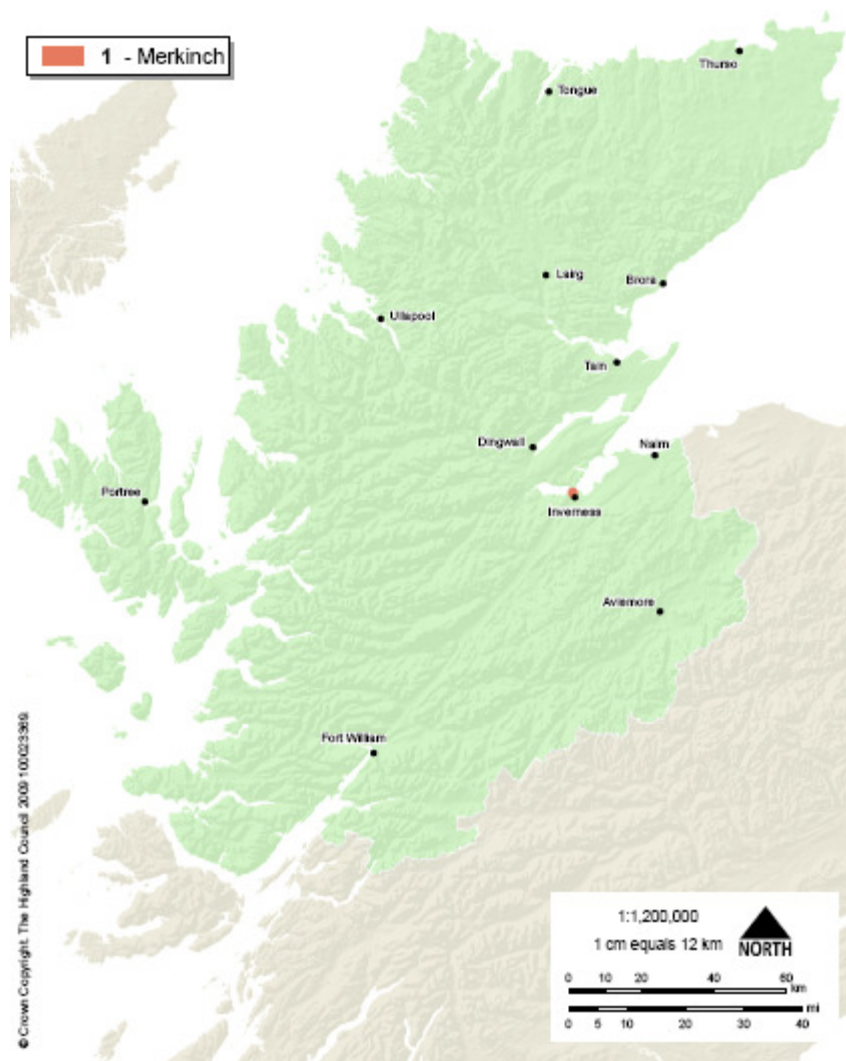


Highland Wide Local Development Plan *Listed Buildings*



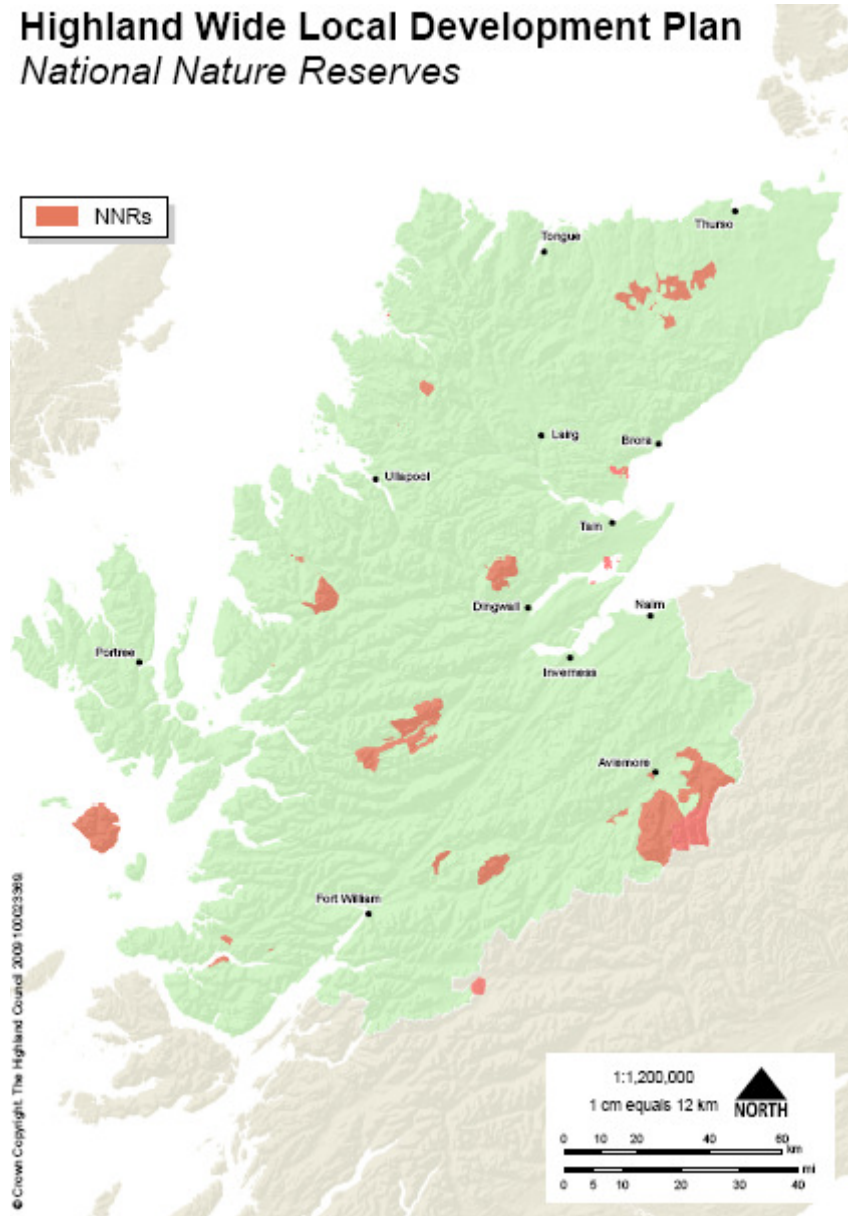
Highland Wide Local Development Plan

Local Nature Reserve

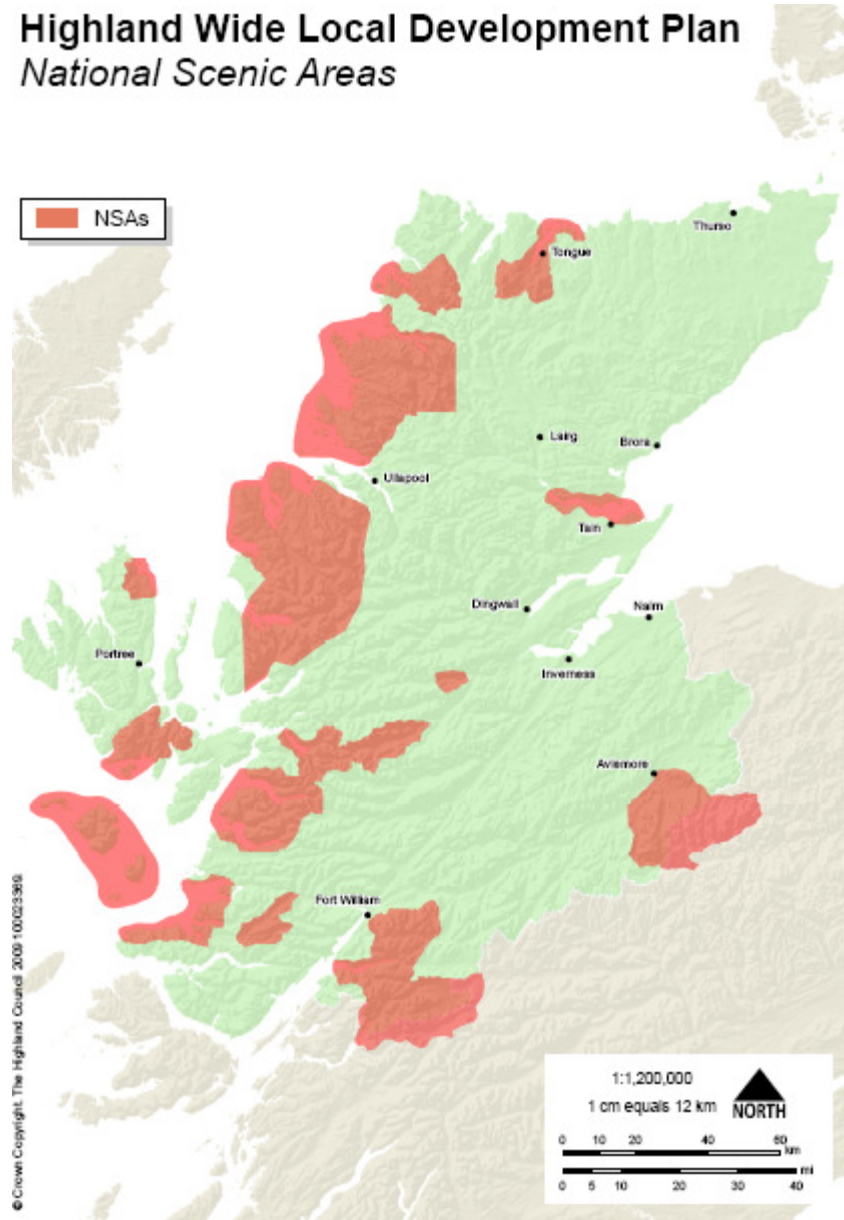


Highland Wide Local Development Plan

National Nature Reserves

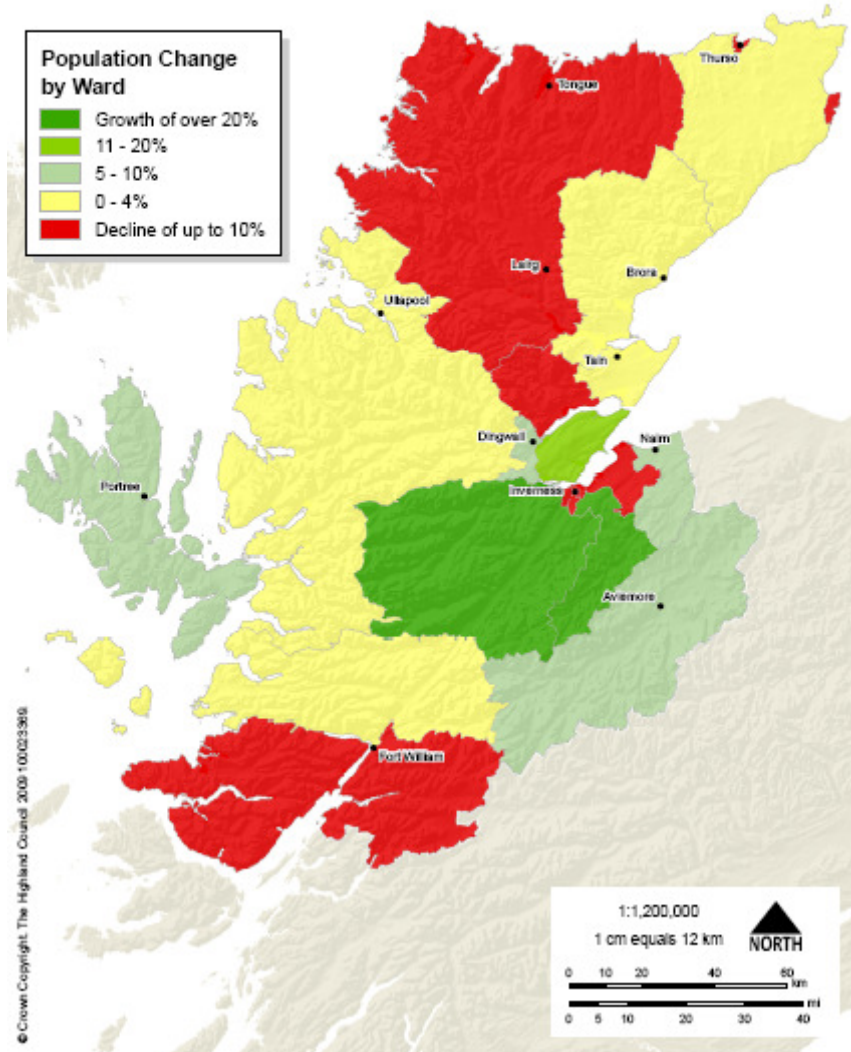


Highland Wide Local Development Plan National Scenic Areas



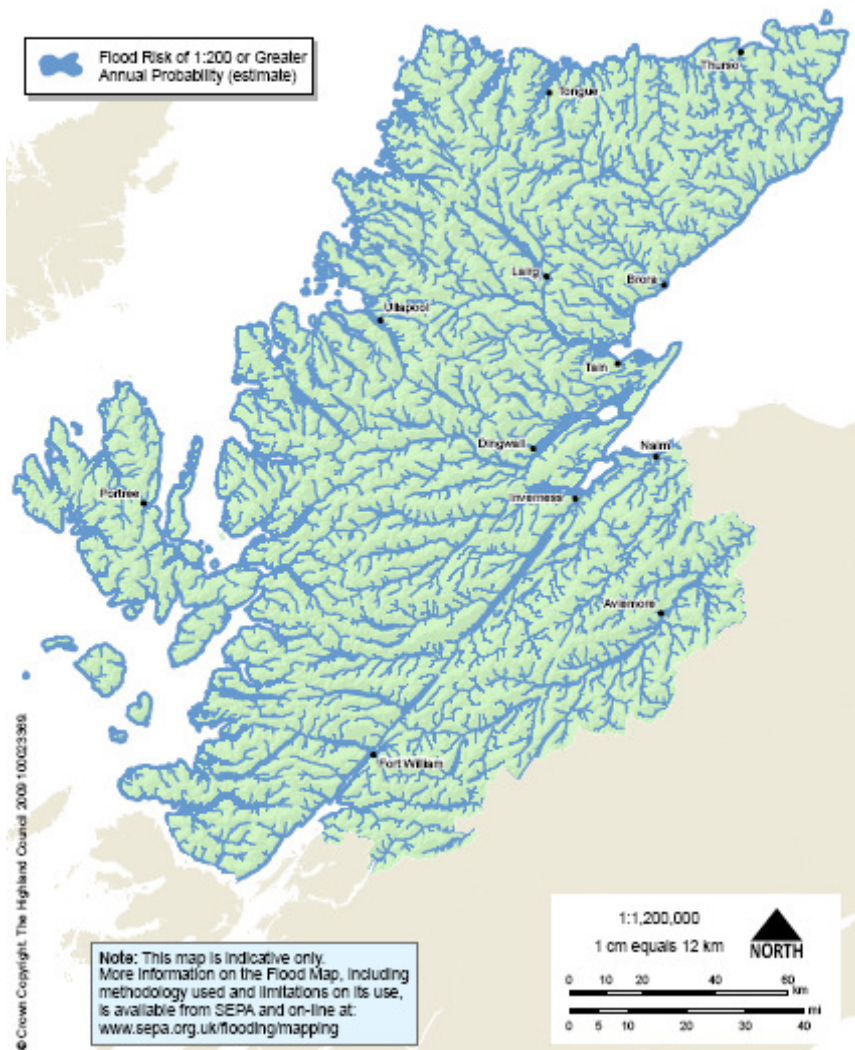
Highland Wide Local Development Plan

Population Change 1998 to 2007



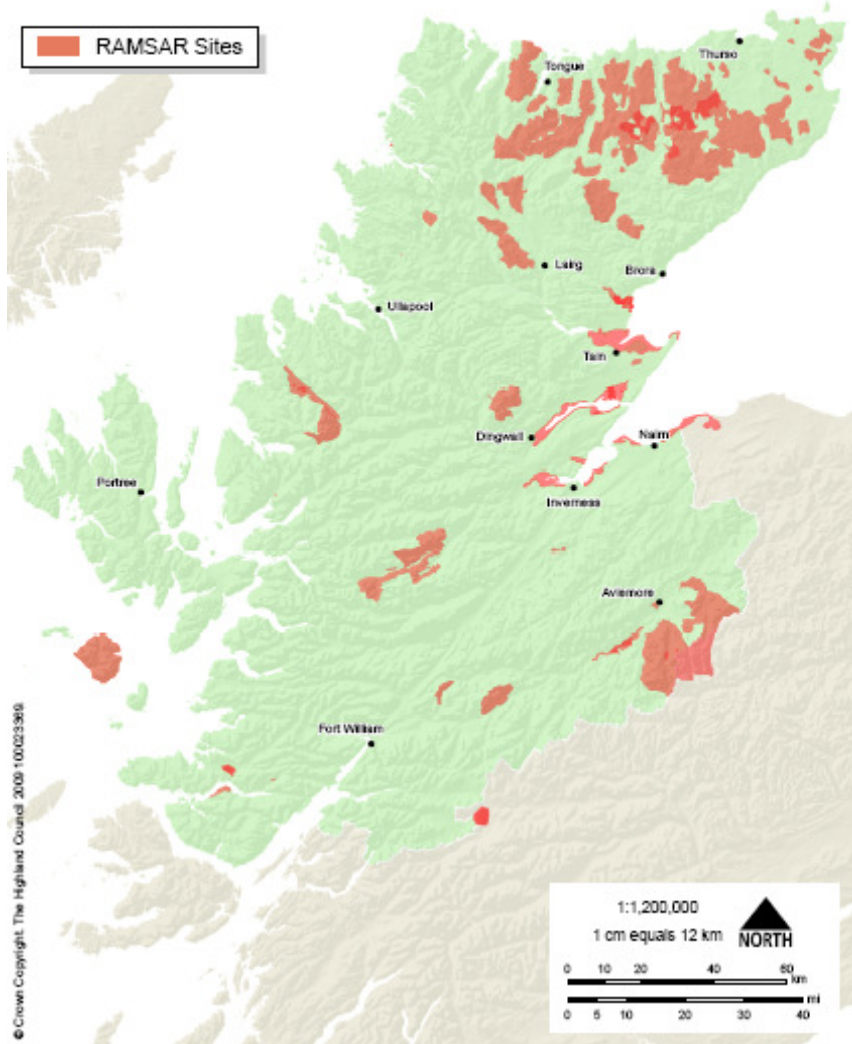
Highland Wide Local Development Plan

Highland Flood Risk

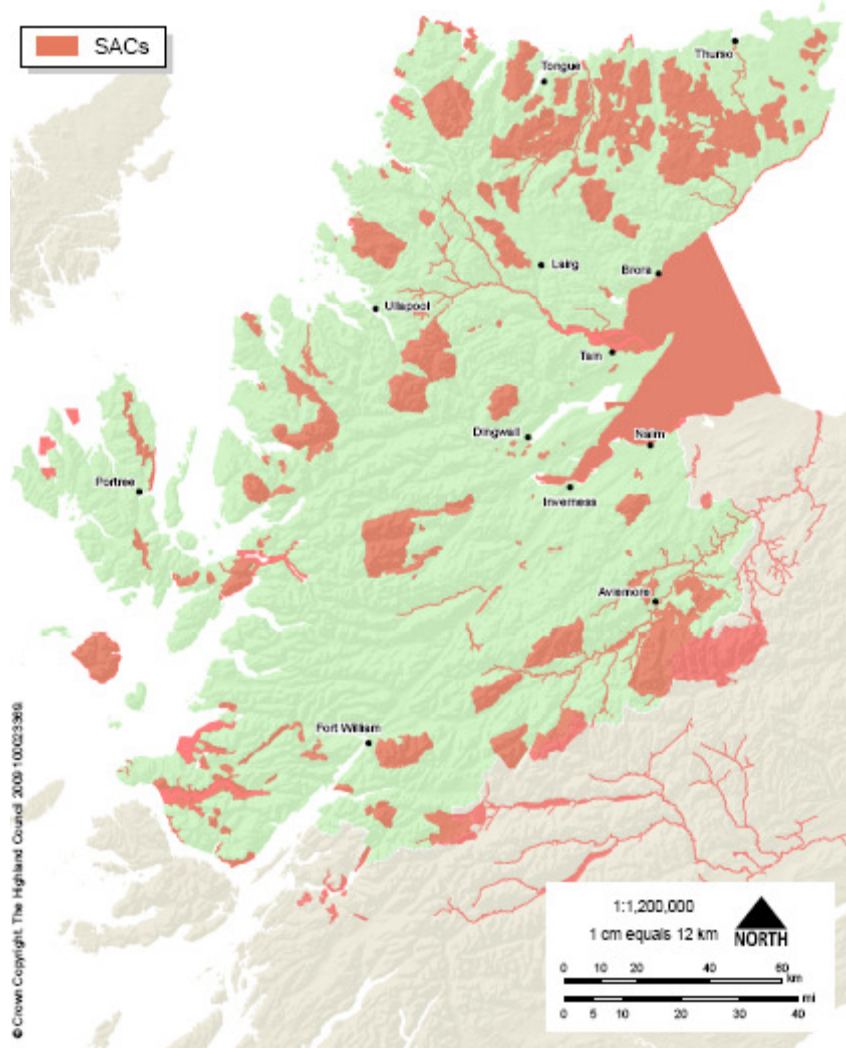


Highland Wide Local Development Plan

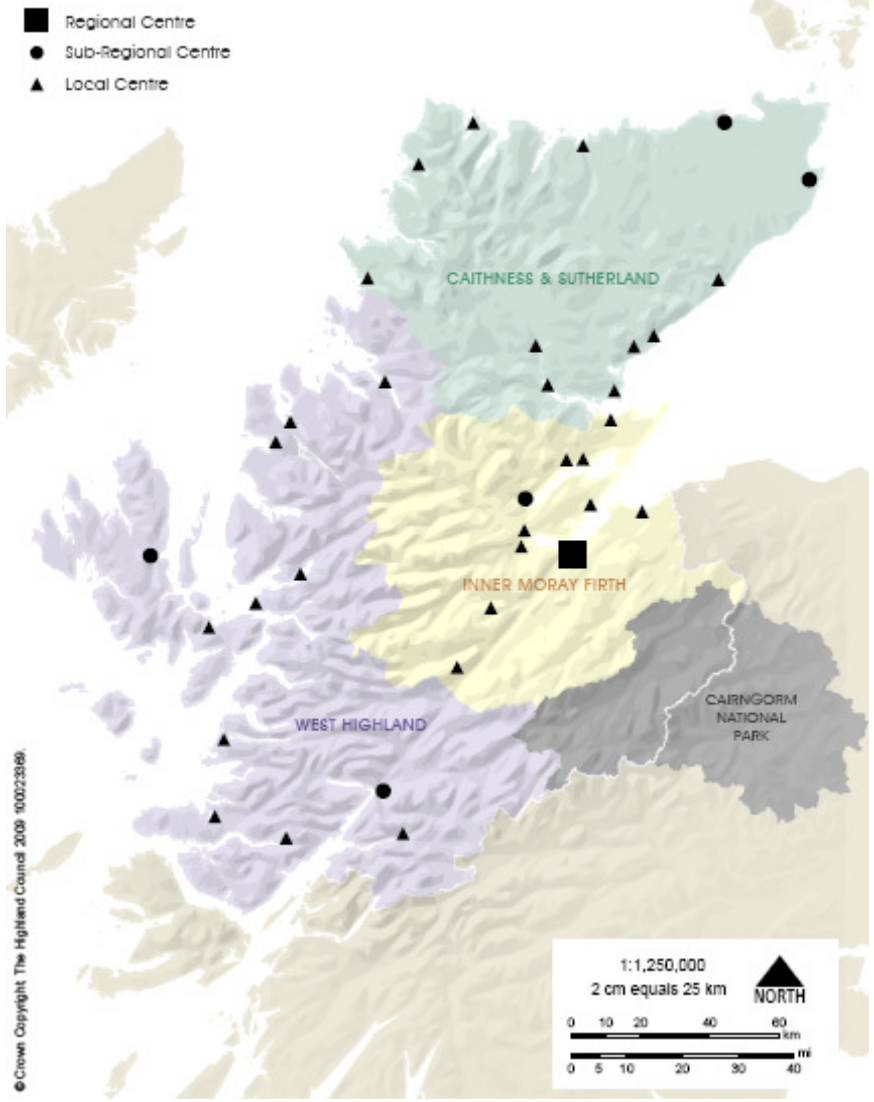
RAMSAR Sites



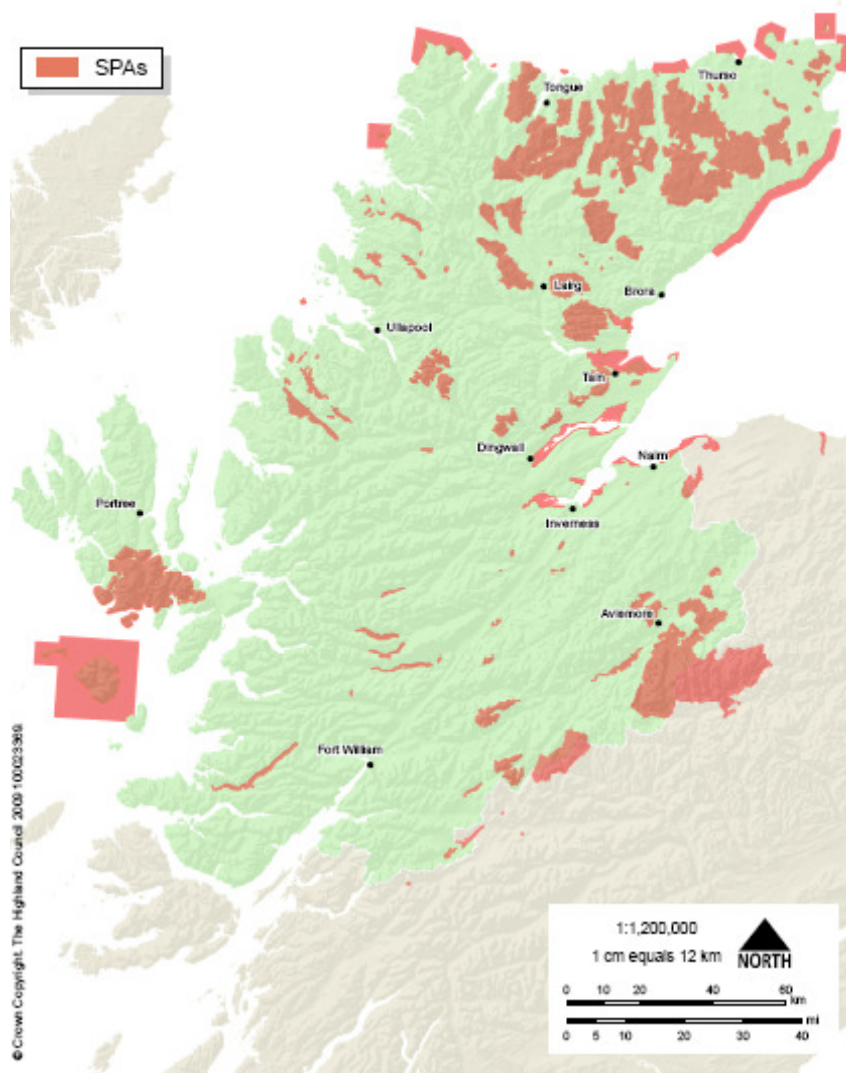
Highland Wide Local Development Plan *Special Areas of Conservation*



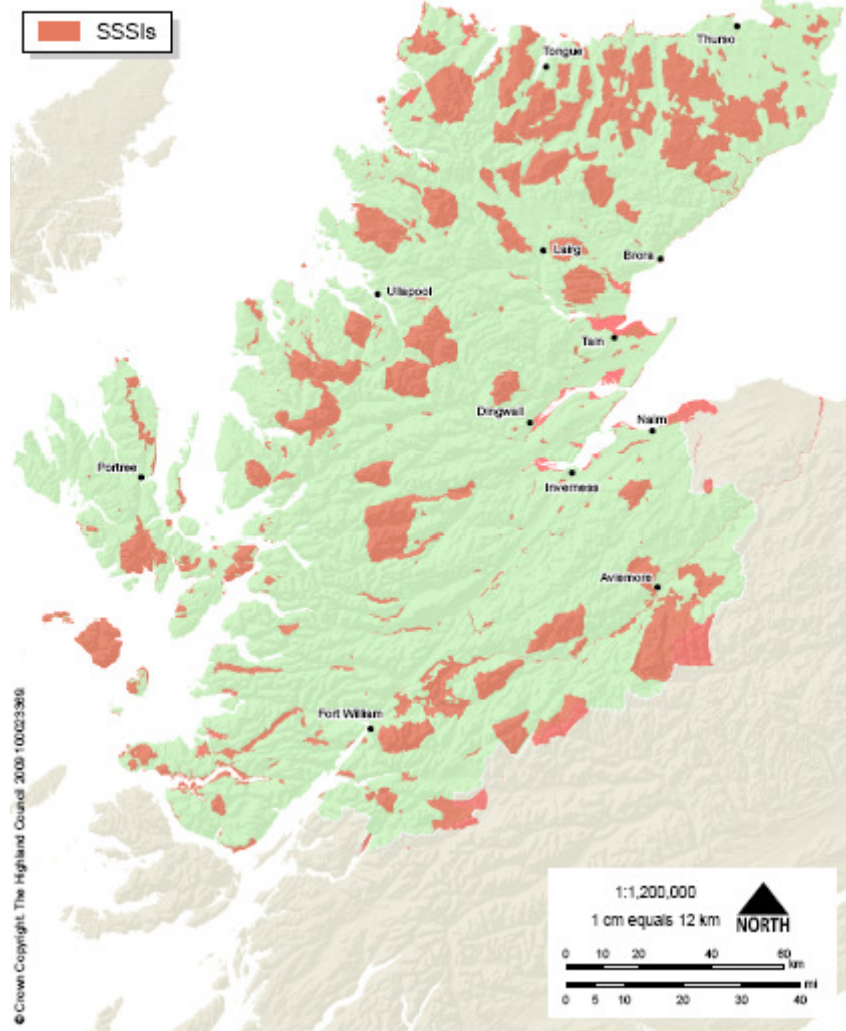
Highland Wide Local Development Plan *Settlement Hierarchy*



Highland Wide Local Development Plan *Special Protection Areas*



Highland Wide Local Development Plan *Sites of Special Scientific Interest*



The baseline data has been derived from that used for the Highland wide Local Development Plan and refined following comment from the consultation authorities.