

Sgoil Àraich & Bun Sgoil Shlèite

Sleat Primary & Nursery



Leabhran na Sgoil

School Handbook 2025/26

Highland Council – Care and Learning

Seòladh/Address: Cille Mhoire, An t-Eilean Sgiathanach. IV44 8RF
Kilmore, Isle of Skye. IV44 8RF

Fòn/Telephone: 01471844326

Post-dealan/E-mail: bun-sgoil.shleite@highland.gov.uk

Làrach-Lìn/Website: <https://sites.google.com/portreehigh.org.uk/bunsgoilshleite>

Facebook: <https://www.facebook.com/bunsgoilshleite1>

**Comann Nam Pàrant/
Parent Council:** sleatpac@gmail.com

**Àireamh Sgoilearan/
School Roll (Dec 24):** School: 53 Sgoil Àraich/Nursery: 16

Fàilte/Welcome



Bu mhath leam fàilte chridheil a chur oirbh uile gu Sgoil Àraich 's Bun-sgoil Shlèite. 'S e sgoil Ghàidhlig a th' ann le foghlam tro mheadhan na Beurla mar thaghadh. Tha sinn a' coimhead air adhart ri bhith ag obair còmhla ribh airson cothroman ionnsachaidh aig àrd-ìre a libhreagadh dhan phàiste agaibh san sgoil, tro mheadhan na Gàidhlig neo Beurla. Tha sinn moiteil gu bheil deagh chothroman ri thoirt seachad gu gach sgoilear san sgoil againn.

I would like to extend a warm welcome to you and your child to Bun-sgoil Shlèite and our Early Learning and Childcare Class (ELCC). It is a Gaelic school with English medium education as an option if that is your preference for your child. We are

looking forward to working with you and aim to provide high quality learning experiences where students inquire and engage in their learning through the medium of Gaelic or English. We are proud of the many opportunities provided to all our students.

'S e amas an leabhran seo fiosrachadh a thoirt dhuibh air ar n-àrainneachd ionnsachaidh agus mar a bhios ar sgoil, agus ar sgoil àraich, agobrachadh bho là gu là. Tha sinn an dòchas gu lorg sibh freagairtean gu na cèistean agaibh 's gum bi aithrisean feumail bho na poileasaidhean againn air am mìneachadh gu solleir. Nam biodh cèistan sam bith agaibh nach leig sibh fios uair sam bith air 01471844326 neo air post-dealain, bunsgoil.shleite@highland.gov.uk Tha sinn airson gum bi daimh làidir eadar parantan agus an sgoil for a bheil conaltradh agus com-pàirteachas ag adhartachadh foghlam na sgoilearan.

The aim of this handbook is to inform you of our learning environment and the daily procedures within our school and ELCC. It contains important statements from school policy as well as practical information regarding the daily running of the school. The handbook is helpful as a source of reference, but should you require any further information or answers to questions, please do not hesitate to contact us on, 01471844326 or on our school e-mail, bunsgoil.shleite@highland.gov.uk We strive to achieve an excellent working partnership between school and home where good communication supports the education of all children.

'S e ar rùn àrainneachd bhrosnachail agus spòrsail a chruthachadh airson ionnsachadh far a bheil gach sgoilear air am mìneachadh gus an làn chomas a choileanadh le taic, agus stiùireadh bhon luchd-obrach air fad ann am Bun-sgoil Shlèite.

We aim to create nourishing and engaging learning environments where enthusiasm and inquiry allows students to ask questions and develop confidence in their learning. This, along with the guidance and support from all of the team at Bun Sgoil Shlèite, allows students to set goals and achieve success.

It is a pleasure to work with you and should you have any questions, suggestions or concerns relating to your child's learning and/or wellbeing, please contact us anytime, whether it is at morning drop off, the afternoon pick-up, by phone, or dropping in throughout the day, we will always welcome you. We look forward to ensuring your child develops skills for learning, work and life.

Mr Kenneth Nicolson
Head Teacher

Clàr-innse/*Contents*

- Fàilte/*Welcome*
- Clàr-innse/*Contents*
- Fiosrachadh mun Sgoile/*School Information*
- Lèirsinn, Luachan & Amasan na Sgoile/*School Vision, Values and Aims*
- An Sgioba Luchd-obrach/ *Staff Team*
- Uairean Fosglaidh na Sgoile/ *School Hours*
- Frithealadh Sgoil/ *Attendance*
- Cinn-latha na Sgoile/ *Term Dates 2025/26*
- Còmhdhail dhan Sgoil/ *Transport to School*
- Droch Shìde/ *Bad Weather*
- Riaghailtean na Sgoile/ *School Rules*
- Poileasaidhean na Sgoile/ *School Policies*
- Cothroman Co-ionnachd / *Equal Opportunities*
- Slàinte/ *Health*
- An Curaicealam/ *The Curriculum*
- Foghlam Tro Mheadhan na Gàidhlig/ *Gaelic Medium Education*
- Slàn Fallain/ *Health & Wellbeing*
- Plana Leasachaidh na Sgoile/ *School Improvement Plan*
- Aithisgean Sgoile/ *Pupil Reports*
- Aodach Sgoile/ *School Uniform*
- Dìnnearan Sgoile/ *School Dinners*
- Taic le Ionsachadh/ *Pupil Support*
- An Sgoil Àraich/ *The Nursery*
- Comhairle nam Pàrant/ *Parent Council*

Fiosrachadh mun Sgoil/School Information

Tha an sgoil a' gabhail a-steach sgìre Shlèite air fad: An DruimFhearna, Tarsgabhaig, An t-Òrd, Dùisdeil, Eilean Iarmain, Tòrabhaig, An Teanga, A' Chill Mhòr, Armadail agus An Àird. Faodaidh clann a tha a' fuireach air taobh a-muigh Shlèite a thighinn dhan sgoil ach feumar iarrtas a dhèanamh ann an Oifis Fhoghlaim na Sgìre. [Gliog an seo gu làrach-lìn airson foirm-iarrtas](#). Cuiribh fios ma tha ùidh agaibh ur pàist' a chur dhan sgoil, no ma tha sibh ag iarraidh turas mun cuairt na sgoile, bunsgoil.shleite@highland.gov.uk

The school caters for children from the entire Sleat peninsula, incorporating Drumfearn, Tarskavaig, Ord, Duisdale, Isle Ornsay, Toravaig, Teangue, Kilmore, Armadale and Aird. Children from outwith the Sleat area can also attend the school after applying for a placing request via the Area Education Office. [Click here for a placing request application](#). If you are interested in enrolling your child or if you would like to see around the school – please let us know, bunsgoil.shleite@highland.gov.uk



Tha sinn fortanach gu bheil deagh ghoireasan againn air feadh na sgoile. Tha ceithir clasaichean againn, airson aois 5-12, trì Ghàidhlig agus aon Bheurla. Tha na clasaichean gu lèir againn ealtach. An dràsta, tha 53 sgoilear san sgoil is 16 eile sna tràth ìrean. (Faoilleach 2025) Tha trì prìomh thogalaichean againn – an togalach mòr far a bheil clasaichean, an talla dìnnearach/ spòrs, an leabharlann agus seòmair luchd teagaisg; an taigh-sgoile far a bheil a'chlas Beurla agus tha togalach ùr Tràth Ìrean againn.

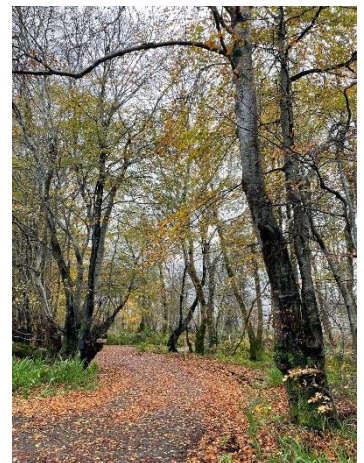
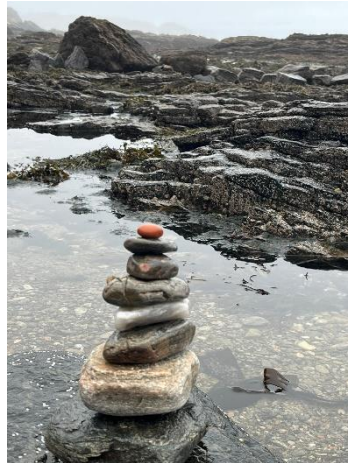
We are extremely fortunate to have excellent facilities, equipment and accommodation in our school. The school currently has 4 classes catering for ages 5 -12, three Gaelic and one English. All of our classes are composite classes. The school roll currently sits at 53 pupils with 16 in the Early Years (January 2025). There are three main buildings that make up the school - the main building has 3 classes, multi-purpose hall, library and staff room; the schoolhouse has our English Medium class and we also have a new purpose built Early Years Building.

Tha deagh shuidheachadh aig an sgoil is i air a cuairteachadh le talamh is goireasan a ghabhas cuir gu feum, eadar gàrradhna sgoile, gàrradh na sgoil-àraich, am MUGA (an raon ioma-spòrsa), pàirc na sgoile agus deagh raon-cluiche. Tha talla nasgoile air a cleachdadh tro là sgoile le sgoilearan agus sgoil àraich/ nursery. Tha e na thoileachas dhuinn gu bheil ceanglaichean againn ri Sabhal Mòr Ostaig an ath-dhoras ri'nsgoil agus Urras Coimhearsnachd Slèite.

A-rèir far a bheil sibh a' fuireach san sgìre, gheibheamaid comhdail dhan sgoil, cuidichidh sinn sibh leis a seo an uair athig sibh dhan sgoil an clàradh.

We have very generous grounds around the school, the garden, the nursery garden, school pitch, MUGA (multi-use games area) and large playground. The school hall is used for many activities during the school day by school pupils as well as sgoil àraich and nursery. We are very fortunate to have links with Sabhal Mòr Ostaig next door to the school and Sleat Community Trust.

Depending on where you live you may be eligible for free school transport; we can help you with this at enrollment.



Lèirsinn, Luachan & Amasan na Sgoile/School Vision, Values & Aims

Ar Lèirsinn

“An t-ionnsachadh òg an t-ionnsachadh bòidheach.”

'S e ar Lèirsinn gum bi Bun-sgoil Shlèite na àrainneachd bhrosnachail, chòir agus spòrsail. Far a bheil clann a' faireachdainn sàbhailte agus misneachail gus an dìcheall a dhèanamh le cuideachadh, taic agus coibhneas bhon luchd-obrach agus na sgoilearan uile ann an àrainneachd a tha soilleir, toilichte agus fàilteach.

Our Vision

Our Vision is for Bun-sgoil Shlèite to be an encouraging, caring and fun environment. Where children feel safe and confident to do their best with help, support and kindness from all the staff and pupils in an environment that is bright, happy and welcoming.

Luachan/Values

Coimhearsnachd/Community
Coimhneas/Kindness
Cultar/Culture
Cruthachail/Creativity

Our vision and values were created after consultation with our school community, including parents/carers, staff and students. They were launched in June 2020 and underpin all that we do at Bun Sgoil Shlèite.

Amasan/Aims

Tha sinn a' gabhail ris an inbhe shònraichte a th'aig Bun-sgoil Shlèite (mar sgoil Ghàidhlig le roinn Bheurla) gus cuir ro eòlasan a h-uile sgoilear tro bhith a' brosnachadh cànan is cultar na Gàidhlig.

Bidh sinn a' cruthachadh àrainneachd thèarainte, fàilteachail agus sona far a bheil gach soirbheachadh air a chomharrachadh. Tha seo a' cruthachadh spiorad coimhearsnachd san sgoil againn, a' cuideachadh cloinne a bhith a' fàs agus ag ionnsachadh ann an àrainneachd thaiceil far a bheil cothrom compàirteas aig gach neach.

Bidh sinn a' toirt taic do chlann gus spèis a leasachadh don sgoil agus don àrainneachd san fharsainneachd, a' brosnachadh beachdan adhartach mu bhith ag ionnsachadh airson seasmhachd agus saoranachd chruinneil.

By embracing our status as a Gaelic school with an English Medium Unit we aim to enhance the experiences of all pupils through the promotion of Gaelic language and culture.

We create a secure, welcoming and happy environment where all achievement is celebrated. This promotes a sense of community spirit in our school, helping children to grow and learn in a supportive and inclusive environment.

We support children to develop respect for the school and wider environment, fostering positive attitudes to learning for sustainability and global citizenship.

Our aim is to encourage children to show positive behaviour through restorative, solution focused and nurturing approaches. Celebrating their successes is achieved through weekly assemblies, school value awards, parent communication on Class Dojo, and our wider achievement display on entry to the school which shares our pupils' successes.

An Sgioba Luchd Obrach/ *Staff Team*

LUCHD OBRACH BUN SGOIL SHLÈITE / SCHOOL STAFF

Head Teacher:	Mr Kenneth Nicolson
Principal Teacher:	Mrs Mairi MacDonald (Maternity Leave)
Acting Principal Teacher:	Miss Heather Loughlin
P1/2 Gaelic:	Ms Sarah MacMillan
P3/4 Gaelic:	Mrs Katie Martin (Mon, Tues, Fri) and Ms Rhoda Ferguson (Wed-Thur)
P5-7 Gaelic:	Mr Kenneth Nicolson
P1-7 English:	Mrs Justine Davies
Sgoil Àraich:	Mrs Sandra MacNeil, Mrs Emma Micski, Ms Fraya MacNeil
Pupil Support Assistants:	Mrs Kirsty Stewart, Mrs Wendy Morrison, Ms Rachel MacKinnon
Music Tutors:	Mr Niall Stewart (Piping), Mrs Roxine Llewelyn Porter (Fiddle)
School Clerical:	Mrs Lorraine MacKinnon
Cook:	Mrs Aileen Meechan, Mrs Adele Hunter
Facilities/Cleaning	Mr Ryan McAllister, Mrs Angela Cardoso Smith

If your child is interested in either piping (chanter) or fiddle tuition, further information can be found at www.highlifehighland.com/music

Uairean Fosglaidh na Sgoile/ *School Hours*

School Hours:

The current opening and closing times for pupils are as follows:

Monday – Thursday

School Opens: 9:00am

Morning Break: 11:00am to 11:15am

Lunch Break: 12:45pm to 1:30pm

School Closes: **3:25pm**

Friday

9:00am

11:00am to 11:15am

12:30 – Grab & Go Lunch

12:35pm

We currently operate on a 4.5 day, asynchronous week, where the school closes early on a Friday and the students have a Grab & Go lunch before going home at 12:35pm.

Sgoil Àraich:

Monday – Thursday

School Opens: 8:55am

Morning Snack: 10:30am

Lunch Break: 12:15pm to 12:45pm

Afternoon Snack: 2:30pm

School Closes: **3:30pm**

Friday

8:55am

10:30am

12:30 – Grab & Go Lunch

12:35pm

Pupils should not arrive at the school any earlier than 8:45am as there is no supervision or access to the playground at that time.

Primary 1 students attend school full-time from the first day of attendance.

Please note that in bad weather students may spend their playtime indoors in their stage classrooms where

Frithealadh Sgoil/ *Attendance*

Parents or Guardians must contact the school office on **01471 844326** or bunsgoil.shleite@highland.gov.uk as soon as possible if their child is absent from school or nursery.

In the interests of child safety, please note that if we have not heard about the reason for a child's absence by **10.00am** we try to contact the child's home by telephone. If no contact can be made, a record will be noted. If a child is absent after 3 days and no contact can be made with the parent, the details have to be forwarded to the Care and Learning Office.

Permission to leave during the school day: If a pupil needs to leave during the school day for an appointment etc, pupils need to bring with them a note from their parent or guardian. Pupils must report to the school reception and 'sign out', if returning the same day, they must report again to the reception and sign in. Where at all possible, medical and dental appointments should be made outwith school hours.

School will only deal with minor cuts and bruises; these will be cleaned and a plaster applied. If your child is injured, falls or becomes unwell during the school day you or the emergency contact you have provided, will always be contacted and you may be advised to collect your child from school.

Cinn-latha na Sgoile/ Term Dates 2025/26

Highland School calendar 2025/26

Please note - Dates may be subject to change

August 2025							
Wk	Mo	Tu	We	Th	Fr	Sa	Su
32					1	2	3
33	4	5	6	7	8	9	10
34	11	12	13	14	15	16	17
35	18	19	20	21	22	23	24
36	25	26	27	28	29	30	31

September 2025							
Wk	Mo	Tu	We	Th	Fr	Sa	Su
37	1	2	3	4	5	6	7
38	8	9	10	11	12	13	14
39	15	16	17	18	19	20	21
40	22	23	24	25	26	27	28
41	29	30					

October 2025							
Wk	Mo	Tu	We	Th	Fr	Sa	Su
41			1	2	3	4	5
42	6	7	8	9	10	11	12
43	13	14	15	16	17	18	19
44	20	21	22	23	24	25	26
45	27	28	29	30	31		

November 2025							
Wk	Mo	Tu	We	Th	Fr	Sa	Su
45						1	2
46	3	4	5	6	7	8	9
47	10	11	12	13	14	15	16
48	17	18	19	20	21	22	23
49	24	25	26	27	28	29	30

December 2025							
Wk	Mo	Tu	We	Th	Fr	Sa	Su
50	1	2	3	4	5	6	7
51	8	9	10	11	12	13	14
52	15	16	17	18	19	20	21
1	22	23	24	25	26	27	28
2	29	30	31				

January 2026							
Wk	Mo	Tu	We	Th	Fr	Sa	Su
2				1	2	3	4
3	5	6	7	8	9	10	11
4	12	13	14	15	16	17	18
5	19	20	21	22	23	24	25
6	26	27	28	29	30	31	

February 2026							
Wk	Mo	Tu	We	Th	Fr	Sa	Su
6							1
7	2	3	4	5	6	7	8
8	9	10	11	12	13	14	15
9	16	17	18	19	20	21	22
10	23	24	25	26	27	28	

March 2026							
Wk	Mo	Tu	We	Th	Fr	Sa	Su
10							1
11	2	3	4	5	6	7	8
12	9	10	11	12	13	14	15
13	16	17	18	19	20	21	22
14	23	24	25	26	27	28	29
15	30	31					

April 2026							
Wk	Mo	Tu	We	Th	Fr	Sa	Su
15			1	2	3	4	5
16	6	7	8	9	10	11	12
17	13	14	15	16	17	18	19
18	20	21	22	23	24	25	26
19	27	28	29	30			

May 2026							
Wk	Mo	Tu	We	Th	Fr	Sa	Su
19					1	2	3
20	4	5	6	7	8	9	10
21	11	12	13	14	15	16	17
22	18	19	20	21	22	23	24
23	25	26	27	28	29	30	31

June 2026							
Wk	Mo	Tu	We	Th	Fr	Sa	Su
24	1	2	3	4	5	6	7
25	8	9	10	11	12	13	14
26	15	16	17	18	19	20	21
27	22	23	24	25	26	27	28
28	29	30					

July 2026							
Wk	Mo	Tu	We	Th	Fr	Sa	Su
28			1	2	3	4	5
29	6	7	8	9	10	11	12
30	13	14	15	16	17	18	19
31	20	21	22	23	24	25	26
32	27	28	29	30	31		

School holidays
In-service days

School days

School Term and Holiday Dates 2025/26:

NB: These dates were correct at the time of writing this handbook. Please click [here](#) to check the latest holiday dates on the Highland Council website.

SCHOOL OPENS	SCHOOL CLOSES
Tuesday 19 th August 2025	Friday 10 th October 2025
Monday 27 th October	Tuesday 23 rd December 2025
Wednesday 7 th January	Thursday 2 nd April 2026
Monday 20 th April 2026	Thursday 2 nd July 2026

Other School Closures:

Staff In-Service Days

Monday 15th and Tuesday 16th September 2025

Wednesday 18th February 2026

Thursday 7th June 2026

Mid-term/ Bank Holiday Closures

Monday 16th and Tuesday 17th February 2026

Monday 4th May 2026

Còmhdhail dhan Sgoil/ Transport to School

Aig crìoch gach latha san sgoil, bidh na sgoilearan a' tighinn còmhla mionaidean ron ghlag gus ullachadh airson na busaichean sgoile. 'S e deagh chothrom a tha seo gus teachdaireachdan is litrichean a' sgaoileadh gu na sgoilearan agus cunntas a dhèanamh mus tèid iad dhachaidh. **Bu mhath leinn gun innsadh sibh dhuinn aig an sgoil neo dràibhear na busaichean ma tha dad air atharrachadh.** Tha e cudromach gu bheil a h-uile duine fiosraichte mu atharrachaidhean sam bith. Tha e cuideachd glè chudromach gu bheil sibh ann an tìde airson ur pàist' a thogail bhon sgoil.

*At the end of each school day, we gather in the main hall to disseminate any letters or information and take a final attendance. Our staff will oversee all children are on the correct bus, being collected or going to Fas Mor. This ensures safer routes home for all pupils. **We request that you inform the school, the bus driver and Fàs Mòr, where necessary, regarding any changes to the end of the school day.** It is important that everyone is informed of any changes. It is also important that children are collected from school promptly.*

Please note that transport is not a school responsibility and any queries should be addressed to the Transport Development Officer, Highland Council, Glenurquhart Road, Inverness, IV3 5NX, or public.transport@highland.gov.uk

Droch Shìde/ Bad Weather

EMERGENCY CLOSURE



In the event of adverse weather requiring the school to close before the school day begins, updates will be provided through the school's communication platforms such as ClassDojo and Facebook and e-mail. You can also check the Highland Council website at <https://www.highland.gov.uk/schoolclosures>. Additionally, the school 'weather-line' is available on 08005642272, using the PIN – 04 2950, for the latest information.

In the event that the school needs to close during the school day due to heavy snow or another unavoidable situation, the following procedure will be implemented by our staff:

1. Inform each child of his/her Storm Address in case they cannot gain access to the family home.
2. Older siblings will collect younger siblings from the appropriate classes.
3. As far as possible, contact the parents to advise them of the closure and any local arrangements for school transport to ensure they are fully informed in the event of adverse weather.
4. Ensure that no child making their way home on foot leaves on his/her own.
5. Immediately refer any difficulties to the Head Teacher.

The school updates its procedures for adverse weather closure annually, therefore parents should advise schools of an alternative, Storm Address/Emergency Contact Address, as close as possible to the school, which may be used by their children in emergencies.

Riaghailtean na Sgoile/ School Rules

- Bi Sàbhailte
- Bi Deiseil airson Ionnsachadh
- Bidh urramach
- Be Safe
- Be Ready to Learn
- Be Respectful

These rules were made by our Pupil Council:

Riaghailtean an Raon-Cluiche

Seall deagh eisimpleir le do chuid ghiùlain.

Bidh còir dha chèile

Innis an fhìrinn

Cuidich daoine eile gus sgilean ùra a thogal.

Nuair a tha thu a'cluich geama lean nariaghailtean.

Playground Rules

Show a good example with your behaviour.

Be kind to each other.

Always tell the truth.

Help others to learn new skills.

Follow the rules when playing games.

Within our school we have a warm and secure atmosphere underpinned by high expectations with regard to manners, general courtesy and behaviour.

We emphasise that every child has the right to be happy – but at the same time every child has a serious responsibility to classmates and schoolmates, to ensure that this right to happiness is not undermined by any individual or minority. Ideally, the school should be supporting and building on a sense of values already known to the child. The relationship between a child and his / her teacher is similar to that between child and parent, in that mutual consideration is required on both sides.

Taighean Sgoile – School Houses

Eilean Donan	Armadale Castle	Castle Moil	Dunvegan Castle
--------------	-----------------	-------------	-----------------

Air gach latha-sgoile dh'fhaodadh sgoilear sam bith a bhith airidh air puingeagan dhan taigh aca nam biodh iad rim moladh, mar eisimpleir, airson a bhith modhail, ri deagh ghiùlan, cuimhneach, a' dèanamh adhartas, grinn nan obair, is mar sin air adhart. Thathar ag ainmeachadh aig Co-thional na Seachdaine na fhuair gach taigh an t-seachdain sin. Tha an iomairt seo a' brosnachadh deagh ghiùlan gach cuid gu pearsanta is ann am buidhinn.

Throughout any one day the children of each house team can be awarded points ranging from good behaviour, responsible actions, thoughtfulness, improvement, neat work, progress, etc. These points are collated weekly and the running total is revealed each week in the dinner hall at the whole school bilingual assembly. These points encourage both individual achievement and collective responsibility.

Poileasaidhean na Sgoile - School Policies

Tha poileasaidhean na sgoile ri fhaotainn airson pàrantan anns an sgoil.

School policies are available for parents to read upon request.

Co-ionannachd Chothroman - Equal Opportunities

Tha e mar dhleastanas againn, mar sgoil, gun innis sinn dha na pàrantan uile gu bheil sinn a' dèanamh a rèir amasan a' Choimisein airson Co-ionannachd Chothroman agus bheireamaid na leanas gu ur n-aire: Tha Bun-Sgoil Shlèite na sgoil a tha a' gleidheadh Co-ionannachd Chothroman agus:

The School is required to inform all parents that it conforms to the wishes of the Equal Opportunities Commission and would ask you to note the following:

Bun-sgoil Shlèite is an Equal Opportunities School and:

- tha Poileasaidh Brosnachadh Co-ionannachd Chothroman agus iomadachd aice; *has a Promoting Equality and Diversity Policy;*
- tha i an aghaidh claon-bhreith no lethbhreith de sheòrsa sam bith; *is opposed to all forms of prejudice and discrimination;*
- tha i a' tathann co-ionannachd cothruim tro spiorad is obair na sgoile; *provides equality of opportunity through its ethos and working practices;*
- tha i ag àrdachadh tuigse agus meas co-cheangailte ri fèin-aithne cultarail is creideimh dhaoine eile; *promotes understanding and respect of other people's cultural identity and beliefs;*

☒ Highland Council's anti-bullying policy -

https://www.highland.gov.uk/downloads/file/19358/anti_bullying_-_guidance_for_schools

Slàinte - Health

Tadhlaidh nurs na sgoile air an sgoil aig amannan gus deuchainnean claisneachd is fradhairc a chumail. Thèid innse dhuibh agus bidh cuireadh agaibh a bhith an làthair ma bhios am pàiste agaibh feumach air làn-dheuchainn mhedigeach an dàrna cuid ann am P1 no P7. Ma tha sibh airson bruidhinn ris an nurs mu rud sam bith, chan eil agaibh ach fios a leigeil dhan sgoil. Bidh Leasaiche Cainnte is Cànan a' tadhal air an sgoil cuideachd. Tha modhan obrach againn air cungaidhean leighis a thoirt do dhaoine san sgoil.

The school nurse will visit the school periodically to check hearing and sight. You will be informed and invited to attend if your child is required to have a full medical in either P1 or P7. Please feel free to contact the school if you wish to speak with the nurse about anything. The school also has the service of a visiting speech and language therapist.

Administration of Medicines

If your child requires medication, please note that this will only be administered by staff when there is clear written guidance from a parent/carer, providing:

- The name of the medicine, the quantity of the medicine to be given, the time it has to be given.
- As far as possible prescriptive medication should be given at home by parents/carers. If it is required to be given in school, the medication should be unopen, clearly marked with the directions from the pharmacist and administered as part of an agreed medical protocol.

National Guidance on the Administration of Medicines in Schools has been issued by the Scottish Government.

<https://www.gov.scot/publications/supporting-children-young-people-healthcare-needs-schools/>

Mental Health and Wellbeing

Staff will support the emotional development and wellbeing of pupils through formal and informal curricular activities. Any concerns about a pupil's wellbeing can be discussed with the named person. There is a website managed by Highland Council that supports a variety of information relating to mental health and emotional wellbeing that can be accessed [here](#). Schools have access to Highland Council's Primary Mental Health Worker Service and consultation and advice may be sought if there are concerns that might require more targeted support. Counselling is also available for all pupils from age 10. Information on your school's service can be accessed from your child's guidance teacher. Alternately, there is a completely confidential, online counselling service called Kooth for children and young people from age 10 that can be accessed [here](#). Parents would generally be involved in discussions beforehand, however a young person over the age of 12 can ask for support themselves.

Schools are required to keep an attendance register by law. We have a responsibility for the care and welfare of all pupils during the school day therefore need to know the whereabouts of absent pupils.

When parents are considering whether or not to remove their children from school for a family holiday, they should be aware that such a decision:

- will result in a significant loss in classroom experience;
- will result in a pressure to 'catch up' on missed work by pupils;
- could result in pupils missing assessments with consequential impact on pupils and teachers;
- could result in the loss of curricular activities;
- will affect school attendance records and efforts to raise standards of attendance;
- under the guidance issued at a national level, most family holidays will be coded as unauthorised absence, only in exceptional cases will the absence be recorded as authorised.

In conclusion, we would ask parents to be aware of these considerations when making decisions on planning holidays during term time. We have enclosed a link to the school term dates on the Highland Council website to aid parents in planning any holidays they may be considering. https://www.highland.gov.uk/info/878/schools/32/school_term_dates

If parents decide to make holiday arrangements during school term, this should be confirmed in writing to the Head Teacher.

An Curaicealam – Curriculum

Tha Alba a' leanntainn an Curaicealam airson Sàr Mhathais a tha ag amas air na leanas - tuilleadh saoirse do luchd-teagaisg, taghadh agus cothroman nas fheàrr do sgoilearan agus aon churaicealam soilleir do chloinn is do dhaoine òga eadar 3-18 bliadhnaichean a dh'aois.

'S ann air dòighean ionnsachaidh is teagaisg as motha a chì pàrantan atharrachadh a' tighinn, is gu h-àraidh le modhan co-obrachail is gnìomhach san t-seòmair-theagaisg. Chithear cudrom ga chur air obair chàraid is obair thriùir agus barrachd fèin mheasaidh is measadh co-inbheach. Tha na dòighean sin air an dearbhadh; tha iad innleachdach, tha iad a' togail ùidh nan sgoilearan, a' toirt orra a bhith a' smaoinichadh, a' toirt dhaibh barrachd seilbh air an cuid obrach, a' cruthachadh sgoilearan a bhios neo-eisimeileach nan dòighean agus seòmair-teagaisg a bhios beòthail is tachartach. Bidh sinn a' cumail fios ribh tron bhliadhna sgoile mar a bhios rudan ùra a' nochdadh le bhith a' cur litrichean dhachaigh.

Scotland follows A Curriculum for Excellence, aiming at the following- more choice for teachers, more choice and opportunities for pupils; one clear curriculum for our young people between the ages of 3 and 18.

One of the biggest changes is collaborative and active approaches to learning in the classroom. Trio and paired work feature highly as do peer and self assessment. These are proven successful methods which are innovative, engage the pupils, make them think, give them more ownership of their work, create independent learners and make for a vibrant, busy classroom. You will be kept up to date throughout the academic year with developments.

Tuilleadh fiosrachaidh/More information: www.education.scot.nhs.uk

Dè th'ann an Curaicealam airson Sàr Mhathais? • What is Curriculum for Excellence?

Curriculum for Excellence aims to achieve a transformation in education in Scotland by providing an improved, more flexible and enriched curriculum for all children and young people from 3 – 18.

The curriculum includes all of the experiences which are planned for children and young people through their education, wherever they are being educated. All schools and nurseries in Highland are working hard to raise standards so that the children and young people will develop all of the skills necessary to continue to be successful when leaving school and entering the world of higher education, training or work.

The purpose of the Curriculum for Excellence is encapsulated in the four capacities – to enable each child or young person to be a successful learner, a confident individual, a responsible citizen and an effective contributor.

Within this there are the seven principles of Curriculum for Excellence which educators use within their planning of experiences, they are:

- Challenge and enjoyment
- Breadth
- Progression
- Depth
- Personalisation and choice
- Coherence
- Relevance.

Dè th'anns na àrainn curaicealam? • *What are the curriculum areas in Curriculum for Excellence?*

Tha na h-ochd àrainn curaicealam ann: - *There are eight curriculum areas: -*

1. Na h-Ealain Cruthachail/ *Expressive Arts*
2. Foghlam Creideamh is Moraltachd/ *Religious and Moral Education*
3. Slàn Falainn/ *Health and Wellbeing*
4. Saidheans/ *Sciences*
5. Cànan (literais)/ *Languages (literacy)*
6. Cuspairean Sòisealta / *Social Studies*
7. Matamataig (cùnnas)/ *Mathematics (numeracy)*
8. Teicneòlais/ *Technologies*

Learning is divided into levels.

LEVEL STAGE

Early the pre-school years and P1 or later for some

First to the end of P4 but earlier or later for some

Second to the end of P7 but earlier or later for some

Third and fourth S1-S3, but earlier for some.

Obair dachaigh – Homework

'S e deagh dhòigh dha pàrantan a bhith ag obair leis a sgoil is toirt taic is brosnachadh gu ur cloinn san obair sgoile aca. Thèid obair dachaigh dhachaigh gu seachdaineil is gheibh sibh tuilleadh fiosrachadh bho clas ur pàist'.

Homework is a great way to engage and support your child with their learning. Homework is typically sent home on a weekly basis and more information will come from your child's class.

Foghlam tro Mheadhan na Gàidhlig - Gaelic- medium Education

Bho àm gu àm gheibh na clasaichean Gàidhlig cothroman taobh a-muigh a' chlas, gus an cuid Gàidhlig a leudachadh mar phàirt chudromach dhen bhogadh aca. Gheibh na clasaichean Beurla cothroman eile a rèir natha iad ag ionnsachadh 's na clasaichean aca. Cha bhith iad an còmhnaidh an aon rud ri na cothroman aig na clasaichean Gàidhlig ged ta air sgath's gu bith iadsan ceangailte ris a' chànain.

From time to time the Gaelic medium classes will have language opportunities out with the class as an important part of the immersion policy in order to broaden their Gaelic language skills. The English medium classes will also have opportunities with their classes, linked to their learning although these may not always be the same as the GM classes as they will be language specific activities.

*The **HMI report Gaelic Education: Building on the successes, addressing the barriers (2011)** defined two outcomes for Gaelic Medium Education 3-18. These are that children and young people: ☐ are equally confident in the use of Gaelic and English; and ☐ are able to use both Gaelic and English in a full range of situations within and outwith school.*

*Children's fluency in Gaelic is enhanced by using the language outwith school. –**Advice on Gaelic Education – Education Scotland.***

Gàidhlig airson luchd- ionnsachaidh - *Gaelic Learners Education*

Children in English medium classes will begin to learn Gaelic as a second language from primary 1 (building on the introduction to Gaelic in nursery) through to primary 7 following a clear progression. The children are in the unique position of being able to see and hear Gaelic spoken in a variety of situations throughout the school through our status as a Gaelic School with an English Medium Department. Gaelic will always be the first language spoken at whole school events but we will always ensure our EM children understand what is being said. They will be encouraged to listen to and to speak Gaelic outwith their classroom environment to help build on the language being learned in the classroom.

Scottish Government Initiative 1 plus 2

Gheibh gach pàist' ann an Alba cothrom da chànan ionnsachadh anns a 'Bhun-sgoil. Ann am Bun-sgoil Shlèite 's e Gàidhlig a tha anns an darna chànan (air ionnsachadh bho clas 1-7) agus Frangach a tha anns an treasamh cànan (air ionnsachadh bho clas 5-7)

Every child in Scotland will be introduced to 2 languages in addition to their mother tongue in primary school as part of the 1+2 initiative from the Scottish Government. In Bun-sgoil Shlèite children will learn Gaelic as language 2 from P.1-7 and French as language 3 from P.5-7.

Slàn Falainn/ Health and Wellbeing

As a school we follow RHSP For health and well being . This resource is used by schools across Highland. There are four themes' pupils will be taught. These are: physical changes, sexual health and sexuality, role of a parent / carer and positive relationships.

These themes are split into curriculum levels early, first and second and therefore there is a progression which is followed.

At Bun Sgoil Shliete we have developed a planner so each year the themes will be taught at the following themes:

Term 1 – positive relationships

Term 2 –physical changes

Term 3-sexual health

Term 4- role of a parent / carer

- Parents will be informed about the content being taught ueach term through a termly overview.

For more information please access: <https://rshp.scot/about-the-resource/#parentsandcarers>

Foghlam Creideamh is Mortaltachd / Religious and Moral Education

Special arrangements will be made for pupils whose parents do not wish them to participate in religious observance.

For more information on curriculum for excellence please use this link [Highland Curriculum for Excellence information](#)

Plana Leasachaidh na Sgoile - *School Improvement Plan*

1. *Promoting Positive Relationships within our School Community.*
2. Develop Curriculum Rationale
3. Raising attainment in writing

Tha e mar fhiachaibh air gach sgoil air Ghàidhealtachd Plana Leasachaidh a nochdadh a sheallas nan roinnean de dh'obair na sgoile a tha fo sgrùdadh agus na leasachaidhean a tha san amharc aice, biodh iad nan leasachaidhean a chomharraich Riaghaltas na h-Alba no Ùghdarras Foghlaim na Gàidhealtachd no nithean a tha mar amas sònraichte aig an sgoil fhèin. Gheibhear leth-bhreac de Phlana Leasachaidh na Sgoile ann an oifis na sgoile.

All Highland schools have to produce an Improvement Plan showing the areas under review within the school and the planned school developments. These developments may be ones highlighted by the Scottish Executive, the Highland Education Authority or school priorities. A copy of the School Improvement Plan is available from the school office for any interested parent.

For information regarding the school's performance at local and national level can be obtained at the following link.

<https://education.gov.scot/inspection-and-review/find-an-inspection-report/find-an-inspection-report/>

<https://education.gov.scot/parentzone/my-school/school-information-dashboard/>

Aithisgean Sgoile- *Pupil Reports*

Tha measadh ga thoirt a-mach gu ìre mhòir tro mheasadh leantainneach (a bhith a' cumail sùil air obair nan sgoilear bho latha gu latha). Nithear measadh cuideachd le bhith a' dèanamh ath-sgrùdadh air obair dhèante. Tha na dòighean seo a' togail neart no laigse ann nan obair nan sgoilear agus thèid ùrachadh is leasachadh a dhèanamh air a' chlàr-ionnsachaidh dharèir

Assessment of the pupil's progress in all areas of the curriculum is mainly by means of continuous assessment (observation of each child's ongoing daily work.) Assessment is also made by means of regular revision work. Much of this helps to identify pupil's difficulties and strengths and enable the staff to adapt the curriculum accordingly

Thathar a' dèanamh cunntas foirmeil do phàrantan da thuras sa bhliadhna a thaobh adhartas an cuid chloinne. Bidh oidhche phàrant ga cumail ann an teirm anFhoghair far am faigh pàrantan facal air an luchd- teagaisg a thaobh adhartas na cloinne aca. Bidh coinneamhan no latha fosgailte gan cumail faisg air àm a' Chàisg le aithisg sgrìobhte faisg air deireadh na bliadhna sgoile. Thèid iarraidh air pàrantan fios a chur dhan sgoil uair sam bith a tha cùis aca ri thogail co-cheangailte ris a' chloinn aca. Tha latha fosgailte againn airson pàrantan gach teirm far am faod iad tighinn a-staigh is fhaicinn clas am pàist' is mun cuairt na sgoile.

Parents are formally contacted twice each school year about their child's progress. There will be a parents' evening in the Autumn term which will be short individual meetings with parents to discuss their child's progress. There will be meetings in the Easter Term with a written report following near the end of the academic year. Parents are encouraged to contact the school if ever they have any concerns or wish to discuss any matter regarding their child. We have a termly open day for parents, where they can drop in and see around the school and their child's work.

Aig na Coinneamhan Phàrant tha uair ga chur air dòigh airson coinneachadh agus faodar bruidhinn ris a' Cheannard cuideachd ma tha sibh ag iarraidh. Bidh an Aithisg air a cur ri chèile à toradh nam measaidhean leantainneach agus measaidhean clas.

At the Parents Meeting an appointment system is used and there is the opportunity to meet with the Head teacher if required. The reports are based on the teachers' continuous assessment and classroom assessments.

Tha sinn a' moladh do phàrantan coinneamh a chur air dòigh leinn aig àm sam bith eile ma bhios cùisean a' dèanamh dragh dhaibh co-cheangailte ri foghlam no maith an cuid chloinne.

We encourage all parents to contact us immediately for an appointment at any other time if they have concerns about their child's education or well-being.

<https://education.gov.scot/parentzone/learning-in-scotland/assessment-and-achievement>

<https://education.gov.scot/inspection-reports/highland>

<https://education.gov.scot/parentzone/my-school/school-information-dashboard/>

Aodach Sgoile - School Uniform

Tha sinn uile a' gabhail misneachd anns an t-suaicheantas againn 's mar sin san sgoil againn cuideachd.



We are all very proud of our school badge and wear our school uniform with pride.

Anns an sgoil tha sinn a' moladh gum bi clann a' cosg lèine-t no lèine agus geansaidh na sgoile le briogais, briogais-ghoirid no sgiorta spaideil, 's gun a bhith a' cosg jeans, briogais spòrs no a leithid.

We encourage all children to wear school uniform (t-shirt/shirt and sweater) with school trousers, shorts or skirts. We do not encourage the wearing of jeans, tracksuit trousers or similar.

'S iad dathan na sgoile an geansaidh gorm-dorcha le lèine liath le briogais/sgiorta dubh/glas/gorm-dorcha.

Our school colours are our navy sweater and light blue polo shirt with grey/black/navy skirts/trousers.

Gheibh sibh aodach sgoile fraoidhneiseach air loidhne aig www.myclothing.com. Cleachd IV44 8RF airson còd-phuist.

Embroidered uniform can be purchased online from www.myclothing.com using postcode IV44 8RF

Brògan Taighe - Indoor Shoes

Bu chòir brògan boga a bhith aig gach pàiste is na **h-ainmean aca sgrìobhte** nam broinn. Tha seo cudromach gus nach tèid na h-ùrlaran a mhilleadh.

*All the children should have **named** indoor shoes that they can change into while in the school buildings after being outside. This is important to maintain the floor coverings.*

Aodach Lùth-Chleasachd - PE/Clothing

Tha briogais-ghoirid, lèintean-t agus brògan freagarrach a dhìth air gach pàiste airson cleasachd. Bu chòir dhaibh seo a bhith air am fàgail san sgoil fad na seachdaine. Tha falt fada ri cheangal air ais agus cha bu chòir dha seudraidh a bhith air a chosg idir. **B' fheàrr gun robh ainmean na cloinne sgrìobhte air bileig san aodach aca.** Tha bocsa's an sgoil far a bheilear a chumail aodach is nithean eile a chaidh fhàgail.

*Shorts, T-shirts and gym shoes/soft trainers are required for PE. These should be kept in school during the week. Long hair should be tied back for PE and no jewellery should be worn. **The labelling of garments e.g. jackets, gym shoes, school jumpers etc. aids identification for the pupil and staff.** We have a lost property box in the school for all items.*

Dinnearan Sgoile - School Meals

Chaill sibh ur clar-bidh? Seo e: Have you mis-placed your menu? Here it is:

https://www.highland.gov.uk/downloads/file/22861/primary_2-choice_menu

Tha clàran-bidh rim faotainn air an làraich-lìn Chomhairle na Gaidhealtachd no bhon sgoil.

- Tha gach dinnear a' cosg £2.30
- Gheibh clann ann an clas 1-5 biadh an asgaidh

Current menus are available on the Highland Council website or from the school.

- Each school dinner costs £2.30
- Children in primaries 1-5 are entitled to free school meals.

Dèanaibh cinnteach gum pàigh sibh an t-airgead ceart **Diluain** gach seachdain. Sgrìobh seicean gu “Highland Council”.

Tha luchd-obrach a’ cumail sùil air a’ chloinn uile aig amannan bìdh.

Faodaidh clann a tha a’ toirt am biadh fhèin leotha a bhith ag ithe san talla còmhla ri càch. Feumaidh biadh a bheir clann a-steach leotha a bhith air a chumail ann am bocsa freagarrach agus, air adhbharan slàinte is sàbhailteachd, chan fhaodar biadh no deochan teth, crogain ghlainne no canastairean a thoirt a-steach dhan sgoil. Cha bhi an t-ùghdarras cunntachail ma thèid biadh, no an stuth sa bheil biadh ga chumail, a chall no a mhilleadh.

Ma tha sibh a’ faighinn shochairnean on stàit a leithid Taic Teachd a-steach no Cuibhreann Sireadh-obrach, gheibhear foirm-iarrtais an ùghdarrais ionadail airson biadh sgoile an-asgaidh agus airgead airson aodach sgoile air loidhne aig https://www.highland.gov.uk/info/878/schools/9/school_meals

neo bhon oifis na sgoile (thèid seo a chumail dìomhair).

*Please ensure that you pay for dinners on a **Monday**, with the correct money. Please make cheques out to “Highland Council”.*

All children are supervised by staff during meal times.

Children with packed lunch eat with the school meals children in the hall. Packed lunches must be carried in an appropriate container and for health and safety reasons no hot food or drinks, glass containers or cans are permitted in school. The Authority cannot be held responsible for any loss or damage to packed meals or their containers.

If you are in receipt of Income Support or Job Seekers Allowance (Income based) you may apply for free school meals and a clothing grant from the authority. Forms are available online at

https://www.highland.gov.uk/info/878/schools/9/school_meals or from the school office in strictest confidence.

Taic le Ionnsachadh - *Support for Learning*

Tha trìùir luchd-taice Ionnsachaidh againn an-dràsta.

We have at present two Pupil Support assistants.

All children need support to help them learn. Some children require more help than others. We follow The Highland Practice Model staged approach to assessing, identifying and supporting additional support needs. In this model every child has a 'named person' who is responsible for making sure that the child or young person has the right help to support his/her development and well-being.

Class teachers, in conjunction with Additional Support Needs Teachers monitor the progress of pupils with additional support. The needs of such pupils are generally catered for within the normal curriculum but with specialist advice and support as required. If necessary, a child's plan may be put in place to help plan, organise, monitor and regularly review a child's progress. Parents and pupils will be involved in these procedures and in reviews. More information can be found about the Highland Council model for support and child's plans at:

http://www.highland.gov.uk/downloads/file/230/highland_practice_model_-_delivering_additional_support_for_learners

http://www.highland.gov.uk/download/downloads/id/11/co-ordinated_support_plan

Sometimes a Children's Service Worker will be involved in supporting a child. A **Children's Service Worker** will generally focus on more social and emotional needs rather than issues about the curriculum or classroom learning. They:

- Work in collaboration with the support team in school.
- Work to support families in their own communities.
- Work with individual pupils and small groups - offering a further level of support.

Sometimes a speech and language therapist will be involved in supporting a child. A speech and language therapist will support children who are struggling to pronounce particular sounds in their speech or if they have any difficulties with processing or communication.

Sometimes Occupational therapy will be involved in supporting a child. An occupational therapist will support children in the following ways:

- School work – including following instructions, working with others, keeping on task, writing, drawing, cutting and pasting or playing sport.
- Life skills – for example, putting on and taking off coats or shoes, changing for sport, using the toilet, eating lunch and managing belongings.
- Transitions – such as stopping one task and starting another, moving between classes, or changing settings from primary to secondary school,

Parents/Carers will always be involved in discussions about any additional support being suggested for their child and any need that may be identified within the school.

Highland Council would seek to work in partnership with parents at all times, but sometimes you will have a concern that you don't feel is being addressed, or will want to talk to someone out with the school. Should you have any concerns that your child's additional needs are not being met, you should contact your child's named person in the first instance and/or the Headteacher heather.loughlin2@highland.gov.uk. If your concerns continue, there are a number of means of resolving difficulties and disputes and information on this can be found at:

http://www.highland.gov.uk/info/886/schools_-_additional_support_needs/1/support_for_learners

Progress

Parents wishing to enquire about a pupil's progress or have concerns about their progress are invited to get in touch with child's class teacher in the first instance or the 'named person', who will usually be the head teacher.

If you wish to find out more about The Highland Practice Model or the Child's Plan you can access more information at :

<http://www.highland.gov.uk/learninghere/supportforlearners/generalguidance/planning/>

There is also Information available at:

www.chipplus.org.uk click on Education.

Enquire – the Scottish advice and information service for additional support for learning <http://enquire.org.uk/>

My Rights, My Say – an advocacy and advice service for young people over 12 with additional support needs

<http://enquire.org.uk/myrightsmysay/>

[Scottish Independent Advocacy Alliance](#), an advocacy service to support parents and children

[Scottish Child Law Centre](#), an organisation providing free legal advice to young people

Please see the link below for the Additional Support for Learning (Scotland) Act 2009

http://www.legislation.gov.uk/asp/2009/7/pdfs/asp_20090007_en.pdf

Transitions

We tailor transition arrangements for children with specific needs that require it.

Transitions in to and out of primary school are very important and we frequently seek parental opinion and support to further develop and improve our transitions.

More information can be found here : [Support for Learners Website](#)

An Sgoil-Àraich – Nursery

We have a Gaelic nursery located in our Early Years Building.

These are open to pupils who are in their pre-school year (4 years old before the end of February and due to start primary school the following August), and pre-pre school pupils who are 3 years old before the end of February. A separate prospectus on the nursery is available, giving further information. Enrolment has to be completed in February each year.

Foghlam Àrd-sgoile - Secondary Education

Mar as trice thèid sgoilearan bho clas 7 gu Àrd-sgoil Phort Rìgh ann am Port Rìgh. 'S i Ms Catherine Dhòmhnallach an Ceannard.

Pupils usually transfer from P7 to Portree High School in Portree. The Head Teacher is Mr Tony Breen.

<http://portreehigh.highland.sch.uk/>

Comhairle nam Pàrant - Parent Council

Tha ballrachd aig gach pàrant no neach-cùraim aig a bheil pàiste san sgoil air **Fòram nam Pàrant** co-dhiù. Cuiridh riochdairean on Fhòram an uair sin an ainmean air adhart airson àite a ghabhail air a' **Chomhairle Phàrant**. Cuiridh a' chomhairle taic ris an sgoil le bhith a' tional airgead is a' brosnachadh nam pàrant uile gus a bhith a' com- pàirteachadh ann an obair na sgoile gu maith na cloinne.

*Each parent/guardian of children in school is automatically a member of the **Parent Forum**. Representatives from the Forum then volunteer to serve on the **Parent Council** supporting the school, fundraising, and actively encouraging all parents to work in partnership with the school to enhance the pupils learning and educational experiences in order that all children can become successful learners, confident individuals, responsible citizens and effective contributors.*

Tha na leanas nam buill de Ch.na P. an-dràsta: *Our present Parent Council office bearers are:*

Catherine de Vries (cathraiche/chair)

Csilla Kiss (ionmhasair/treasurer);

Keith MacKenzie (rùnaire/secretary);

Ma tha sibh airson a bhith an sàs 'sa chomhairle no airson cùis a thogail co-cheangailte ri foghlam san sgoil, chan eil agaibh ach fios a leigeil dhan Chomhairle Phàrant air làraich-lìn na sgoile

If you wish to become involved or have views you wish to express about educational issues, please contact the Parent Council on sleatpac@gmail.com or via the school website www.bunsgoilshleite.com

Tachartasan às dèidh Sgoile – Out of School Activities

Ball-coise/Football	Disathairne/ Saturday A'coinneachadh aig am MUGA anns an Ath Leathann/meeting at the MUGA in Broadford
9.45-.11.00 C4-7/P4-7	
11.20 – 12.00 C1-3/P1-3	

Pàrantan Taice - Parental Involvement

Tha sinn a' sireadh, is feumach air, luchd-taic à measg nam pàrant.

Bhìomaid fada an comain pàrant sam bith a bhiodh deònach an cuid sgilean is ùine a thathann dhan sgoil. Leigidh sin dhaibhsan tighinn nar measg-ne agus a bhith a' com-pàirteachadh ann an obair na sgoile. Bidh sin feumail dhan chloinn aca fhèin is do chloinn eile. Tha pàrantan gar cuideachadh le nithean a leithid teicneòlas-fiosrachaidh (ICT), fuine, obair chiùird, geamannan, obair litreachas no cunntas is eile.

Tha Comataidh Eig-eòlais, Comhairle Sgoilear agus Comhairle an Roinn Cluiche againn far am faigh sgoilearan cothrom pròiseactan a leasachadh feadh na sgoile. Cuideachd, am bliadhna tha sinn an dùil comataidh a chur air doigh le sgoilearan agus pàrantan agus garradh na sgoile a leasachadh. Tha sinn cuir fàilte oirbh tighinn comhla riunn gus taic a chur dha na buidhnean seo.

Tha Comhairle Phàrant na sgoile ag obair gu cruaidh anns an sgoil agus tha 's e dòigh eile a tha ann a bhith ag obair leis an sgoil agus a' dèanamh diofar. Faicibh gu h-àrd airson tuilleadh fiosrachadh mun Chomhairle Phàrant againn.

Tha sinn cur fàilte air pàrantan tighinn thugainn aig àm sam bith le beachdan, gearainnean agus draghan sam bith. Tha sinn airson feuchainn ri bhith cho fosgailte sa 's urrainn dhuinn a bhith agus dèiligeadh cho luath sa 's urrainn dhuinn.

Ma tha ùidh agaibh ar cuideachadh, cuiribh fios dhan oifis sgoile.

Whilst the information in this handbook is considered to be accurate at the date of publication, changes in circumstances after the time of publication may impact on the accuracy of the information.

We welcome and need parental involvement in the school.

For example, if you are able to offer any skills, time or energy we can use you! Being a parent helper gives you the chance to see us at work and to build an active partnership with the school which will benefit your child and others. Parent helpers are involved in ICT, baking, craft activities, playing games, reading with reading groups, working with maths groups etc

We have a Pupil Council. Pupil, to encourage pupils to develop and further school projects. In the coming school session, it is hoped that we will also have a Garden working Party with parents and children working together to develop our school garden. We welcome parent participants on these groups.

The Parent Council is another means with which you can effect positive change in the school; please see above where there is more information available about our Parent Council.

We welcome parents to come forward at anytime to discuss any concerns, complaints and ideas. We aim to be as open as possible and to be as responsive as is possible too.

If you are interested in helping, please get in touch with the school office.

Ma ràinig sibh an deireadh agus gu bheil ceistean oirbh fhathast, nach cuir sibh fios thugainn anns an sgoil.
If you have now reached the end and you still have a question that is unanswered – please contact us at the school.

01471 844326

bungoil.shleite@highland.gov.uk

www.bungoilshleite.com

