

**Legend**

- Beatrice Offshore Wind Farm Site
- Beatrice Offshore Transmission Works Corridor
- Beatrice Onshore Transmission Works
- X Beatrice Demonstrator Turbines
- MORL Eastern Development Area
- MORL Western Development Area
- MORL Offshore Survey Area
- Cable (submarine)
- Pipeline (submarine)
- ◆ Potential Location of SHETL Hub
- Approximate SHETL cable route

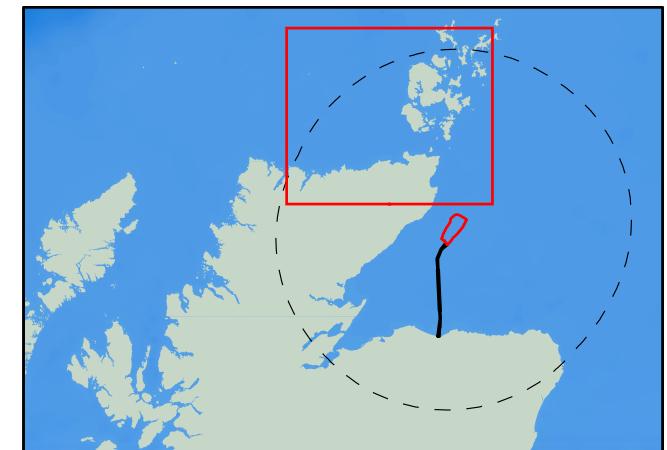
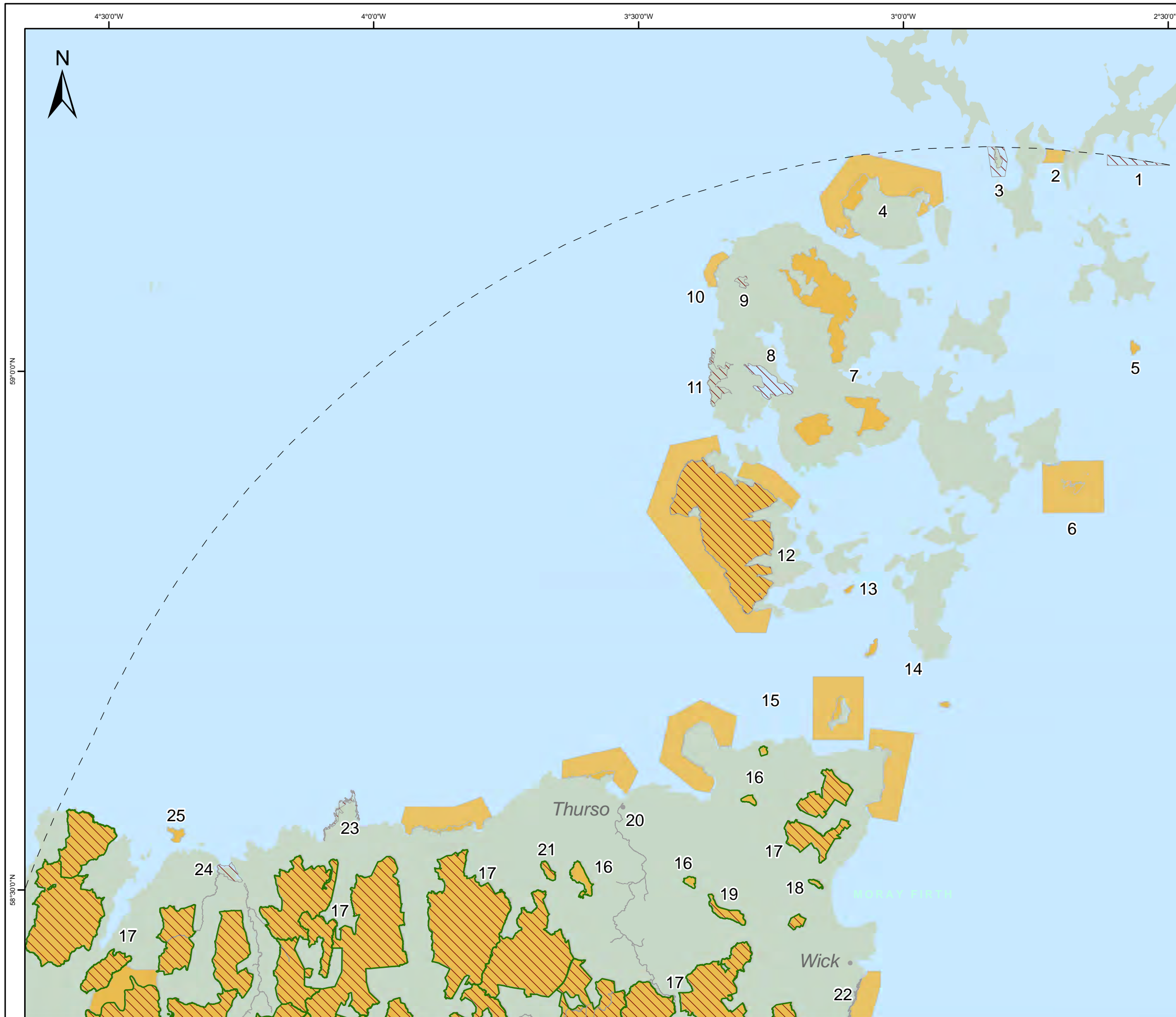
© British Crown and SeaZone Solutions Limited. All rights reserved. Products licence No. 012010.004. Bathymetry reproduced from the GEBCO Digital Atlas published by the British Oceanographic Data Centre on behalf of IOC and IHO, 2003. SSE Renewables (UK) Ltd, 2012. The concepts and information contained in this document are the copyright of SSE Renewables (UK) Ltd. Use or copying of the document in whole or in part without the written permission of SSE Renewables (UK) Ltd constitutes an infringement of copyright. SSE Renewables (UK) Ltd, does not warrant that this document is definitive nor free of error and does not accept liability for any loss caused or arising from reliance upon information provided herein.



**Figure 4 - MORL**

Drawn: MM	Checked: JS	Approved: JS	
Date: 17/02/2012	Scale: 1:800,000 @ A4		
Drawing Number: BEA-MAP-EWF-BOWL-203	Revision: 02		
Datum: WGS84	Projection: UTM30N		





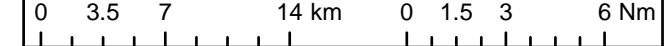
**Legend**

- Beatrice Offshore Wind Farm Site
- Beatrice Offshore Transmission Works Corridor
- Wind Farm Site 100km Buffer

**Designations**

- RAMSAR
- SAC
- SPA

© British Crown and SeaZone Solutions Limited. All rights reserved. Products licence No. 012010.004. Bathymetry reproduced from the GEBCO Digital Atlas published by the British Oceanographic Data Centre on behalf of IOC and IHO, 2003. SSE Renewables (UK) Ltd, 2012. The concepts and information contained in this document are the copyright of SSE Renewables (UK) Ltd. Use or copying of the document in whole or in part without the written permission of SSE Renewables (UK) Ltd constitutes an infringement of copyright. SSE Renewables (UK) Ltd. does not warrant that this document is definitive nor free of error and does not accept liability for any loss caused or arising from reliance upon information provided herein.



**Figure 5A - Designations**

Drawn: MM	Checked: VR	Approved: VR
Date: 19/01/2012	Scale: 1:425,000 @ A3	
Drawing Number: BEA-MAP-EWF-BOWL-180	Revision: 01	
Datum: WGS84	Projection: UTM30N	

