

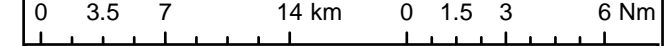
**Legend**

- Beatrice Offshore Wind Farm Site
- Beatrice Offshore Transmission Works Corridor
- Wind Farm Site 100km Buffer

**Designations**

- RAMSAR
- SAC
- SPA

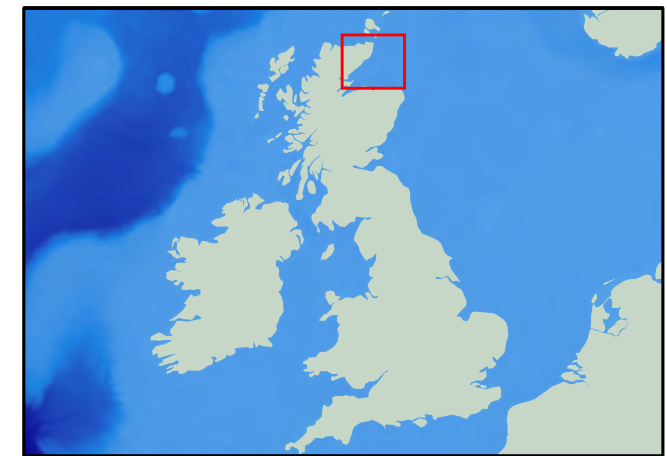
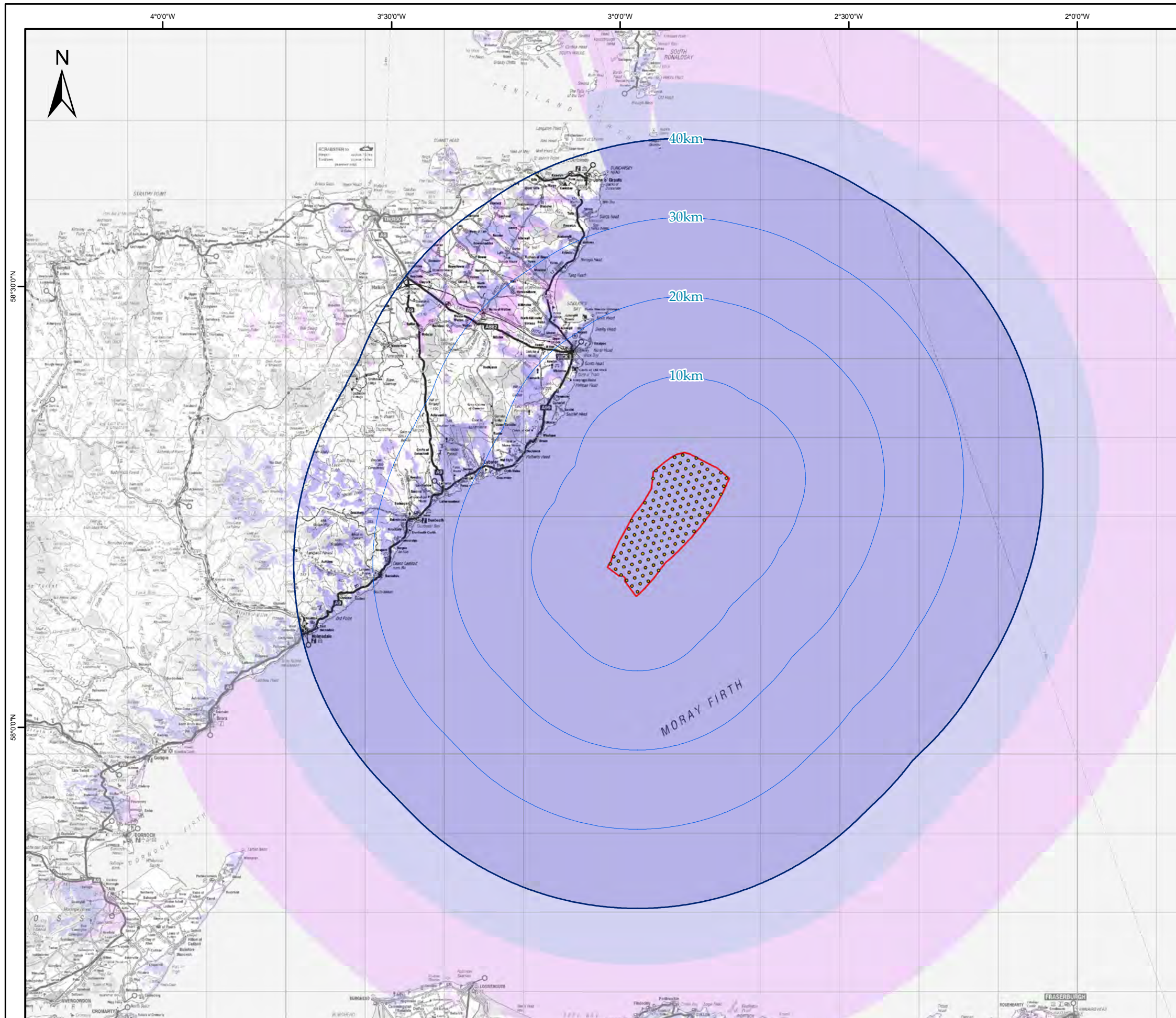
© British Crown and SeaZone Solutions Limited. All rights reserved. Products licence No. 012010.004. Bathymetry reproduced from the GEBCO Digital Atlas published by the British Oceanographic Data Centre on behalf of IOC and IHO, 2003. SSE Renewables (UK) Ltd. 2012 The concepts and information contained in this document are the copyright of SSE Renewables (UK) Ltd. Use or copying of the document in whole or in part without the written permission of SSE Renewables (UK) Ltd constitutes an infringement of copyright. SSE Renewables (UK) Ltd. does not warrant that this document is definitive nor free of error and does not accept liability for any loss caused or arising from reliance upon information provided herein.



**Figure 5B - Designations**

Drawn: MM	Checked: VR	Approved: VR
Date: 19/01/2012	Scale: 1:425,000 @ A3	
Drawing Number: BEA-MAP-EWF-BOWL-181	Revision: 01	
Datum: WGS84	Projection: UTM30N	





**Legend**

- Beatrice Offshore Wind Farm Site
- Proposed Turbines
- 10km, 20km & 30km radii around Site
- 40km Study Area
- Hub Visible (115.9m AOD)
- Blade Tip Visible (198.4m AOD)

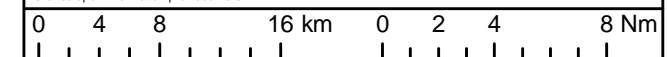
This drawing is based upon computer generated Zone of Theoretical Visibility (ZTV) studies. The areas shown are the maximum theoretical visibility, taking into account topography, principal woodlands and settlements as shown, which have been included in the model with the heights indicated. The model does not take into account any localised features such as small copses, hedgerows, mature trees or buildings and therefore gives an exaggerated impression of the extent of visibility. The actual visibility on the ground will be noticeably less than that suggested by this plan and visibility from principal settlements is likely to be possible from peripheral areas only.

The ZTV includes an adjustment that allows for the Curvature and Light Refraction of the Earth and has a 10m<sup>2</sup> resolution.

No dimensions are to be scaled from this drawing. All dimensions are to be checked on site. Area measurements for indicative purposes only. Data received from LDA Designs 2011. OS Open data © Crown copyright and database right 2011

Sources: Ordnance Survey

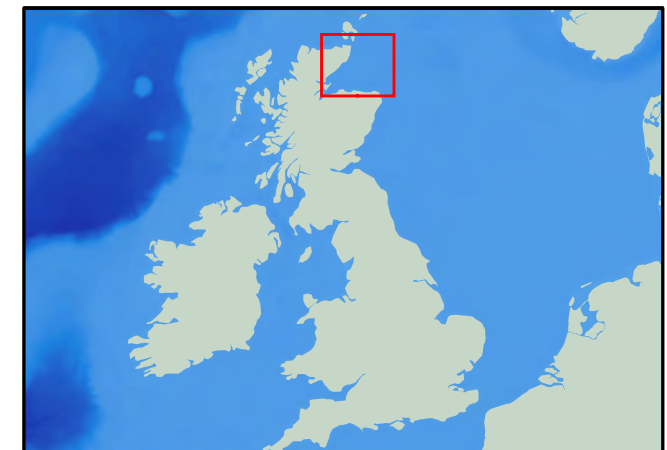
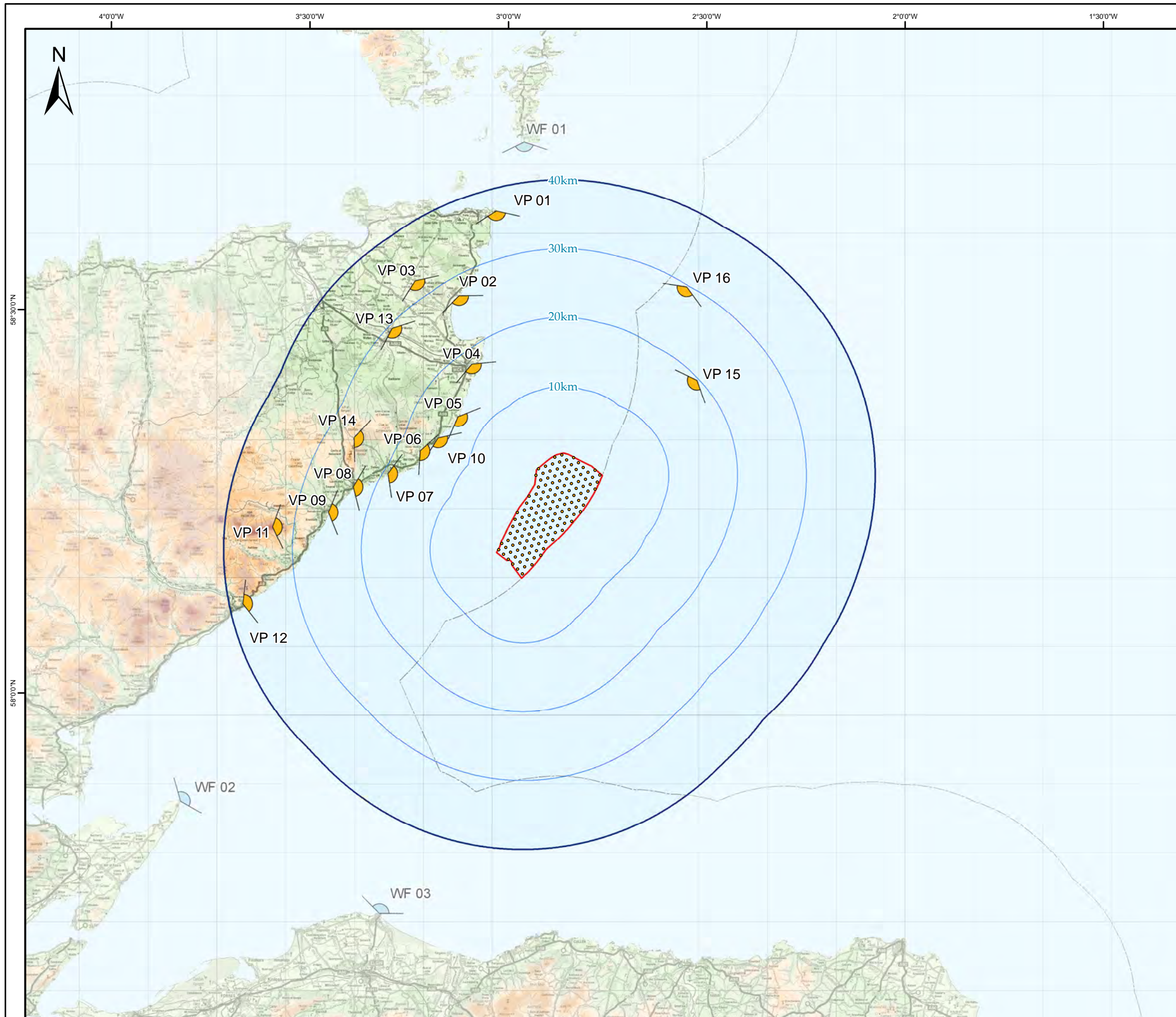
Bathymetry reproduced from the GEBCO Digital Atlas published by the British Oceanographic Data Centre on behalf of IOC and IHO, 2003. SSE Renewables (UK) Ltd. 2012. The concepts and information contained in this document are the copyright of SSE Renewables (UK) Ltd. Use or copying of the document in whole or in part without the written permission of SSE Renewables (UK) Ltd constitutes an infringement of copyright. SSE Renewables (UK) Ltd. does not warrant that this document is definitive nor free of error and does not accept liability for any loss caused or arising from reliance upon information provided herein.



**Figure 6 - ZTV**

Drawn: MM	Checked: DL	Approved: WW
Date: 01/02/2012	Scale: 1:500,000 @ A3	
Drawing Number: BEA-MAP-EWF-BOWL-132	Revision: 05	
Datum: OSGB36	Projection: BNG	





**Legend**

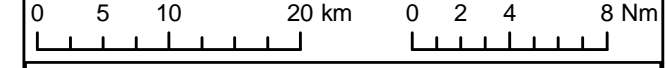
- Beatrice Offshore Wind Farm Site
- Proposed Turbines
- 10km, 20km & 30km radii around Site
- 40km Study Area
- UK Territorial Sea Limit
- Viewpoint Location
- Wireframe Location

**Landform**

0 - 50 AOD	350 - 400 AOD
50 - 100 AOD	400 - 450 AOD
100 - 150 AOD	450 - 500 AOD
150 - 200 AOD	500 - 550 AOD
200 - 250 AOD	550 - 600 AOD
250 - 300 AOD	600 - 650 AOD
300 - 350 AOD	650 - 700 AOD

No dimensions are to be scaled from this drawing. All dimensions are to be checked on site. Area measurements for indicative purposes only. Data received from LDA Designs 2011. OS Open data © Crown copyright and database right 2011

Sources: Ordnance Survey  
 Bathymetry reproduced from the GEBCO Digital Atlas published by the British Oceanographic Data Centre on behalf of IOC and IHO, 2003. SSE Renewables (UK) Ltd. 2012. The concepts and information contained in this document are the copyright of SSE Renewables (UK) Ltd. Use or copying of the document in whole or in part without the written permission of SSE Renewables (UK) Ltd constitutes an infringement of copyright. SSE Renewables (UK) Ltd. does not warrant that this document is definitive nor free of error and does not accept liability for any loss caused or arising from reliance upon information provided herein.



**Figure 7 - Viewpoint Locations**

Drawn: MM	Checked: DL	Approved: WW
Date: 14/02/2012	Scale: 1:575,000 @ A3	
Drawing Number: BEA-MAP-EWF-BOWL-138		Revision: 08
Datum: OSGB36	Projection: BNG	

