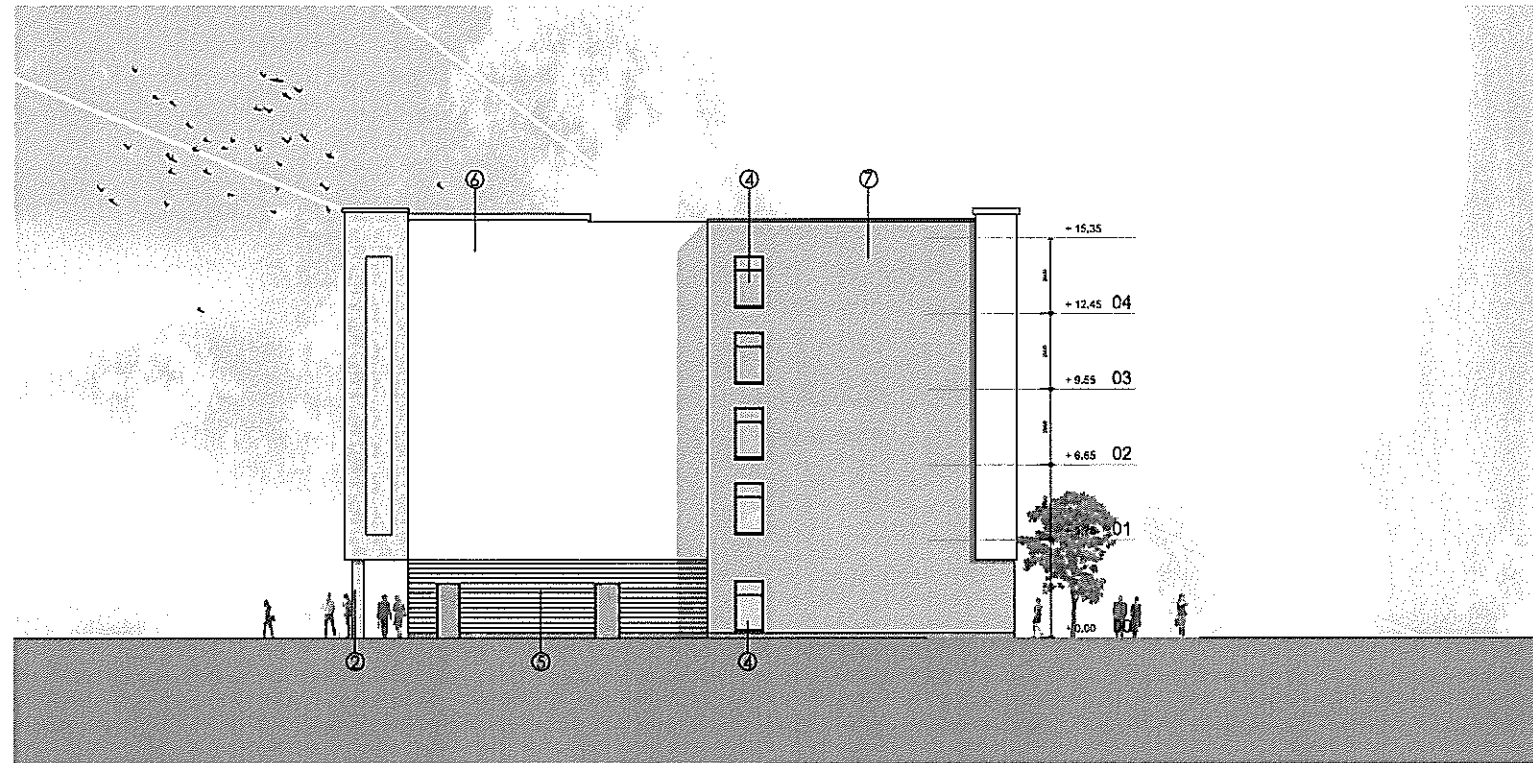


Key - Proposed External Materials

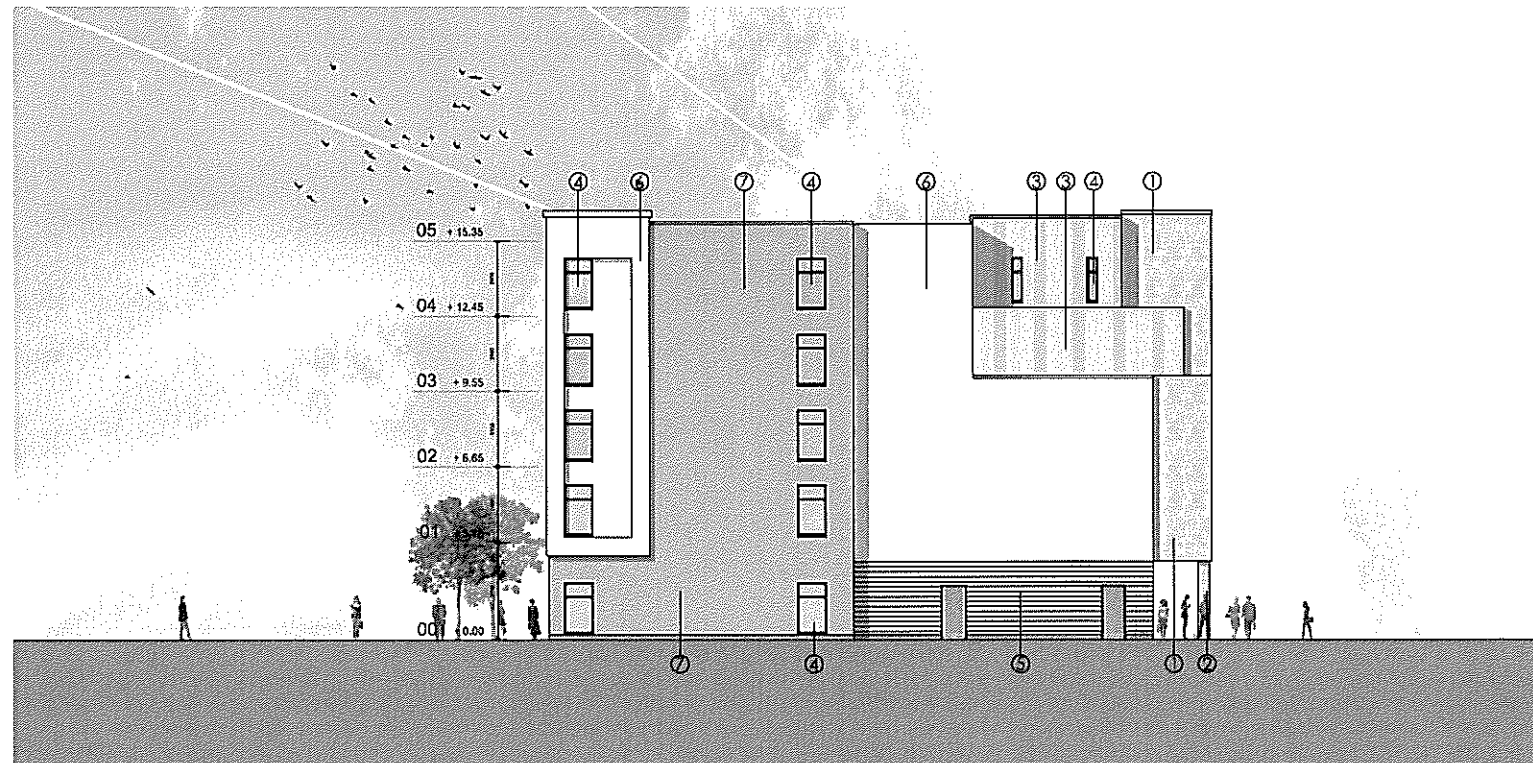
- 1 High quality Blonde Sandstone cladding
- 2 Columns clad in Blonde Sandstone with concealed drainpipes
- 3 Vertically proportioned grey metal cladding (finish tbc)
- 4 Aluminium window unit
- 5 Buff brick
- 6 Stucco render - light colour
- 7 Stucco render - dark colour
- 8 Shop front finished in high quality stone and glass
- 9 Aluminium window unit with spandrel glazing
- 10 Drainpipes designed into niche

Figured dimensions only to be taken from this drawing. All dimensions are to be checked on site before any work is put in hand IF IN DOUBT ASK

CDM: Hazard Elimination & Risk Reduction has been undertaken and recorded where appropriate, in accordance with the requirements of 'The Construction (Design and Management) Regulations 2007' and the 'Industry Guidance for Designers'



Proposed East Elevation



Proposed West Elevation

Revision

Drawn: Chkd: Date:
Revision

Drawn: Chkd: Date:
Revision

Drawn: Chkd: Date:
Revision

Drawn: Chkd: Date:
Revision

A Issued for Planning

Drawn: Chkd: Date:

keppie

Architectural & Planning Services

PERTH
76 Tay Street,
Perth
PH2 8NP
Tel: 01739 431 591
www.keppiedesign.co.uk

Client:
Ark Estates (Scotland) Ltd.

Project:
92-94 Academy Street
Inverness

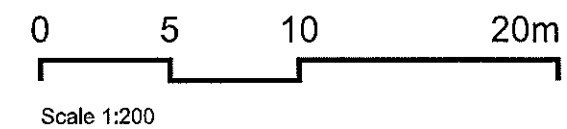
Drawing:
Proposed Elevations
East & West Elevations

Project No.
210042

Drawing No. Rev.
PL(20)009 A

Status
For Planning

Created • ph Checked • jb
Date • 28.06.13 Scale • 1:200 © A2





North West view on Academy Street



Looking North on School Lane

Revision

Drawn: Chk'd: Date:
Revision

Drawn: Chk'd: Date:
Revision

Drawn: Chk'd: Date:
Revision

Drawn: Chk'd: Date:
Revision

A Issued for Planning

Drawn: jh Chk'd: jh Date: 28/6/13



South East view on Academy Street



Looking North through pend

keppie

architecture • interior design • planning • landscape • urban design

PERTH
78 Tay Street,
Perth
PH2 8NP
Tel: 01733 631 551
www.keppledesign.co.uk

Client
Ark Estates (Scotland) Ltd.

Project
92-94 Academy Street
Inverness

Drawing
Selected Views

Project No.
210042

Drawing No. Rev.
PL(20)011 A

Status
For Planning

Created • ph Checked • jh
Date • 28.06.13 Scale • 1:200 @ A2