

COPYRIGHT, DESIGNS and PATENTS ACT 1988:
 This drawing may not be reproduced, copied or used in any way without the written permission of the Director of Transport, Environmental & Community & Services.
 © THE HIGHLAND COUNCIL

Notes
 Reproduced from the Ordnance Survey mapping with the permission of the Controller of Her Majesty's Stationary Office © Crown Copyright. Unauthorised reproduction infringes Crown copyright and may lead to prosecution or civil proceedings.
 The Highland Council 2013 100023369

Revision Details	By	Date	Surf's

CAPITA SYMONDS
 The Capita Building
 Kingmoor Business Park
 CARLISLE
 Cumbria
 CA6 4SJ
 Tel: 01228 673000
 Fax: 01228 673111

The Highland Council
 Comhairle na Gàidhealtachd
 TRANSPORT, ENVIRONMENTAL & COMMUNITY SERVICES
 PROJECT DESIGN UNIT
 Osprey House
 Ainess Point Business Park
 Ainess, IV17 0UP
 Phone : 01349 886741
 Fax : 01349 886749
 E-Mail : jim.smith@highland.gov.uk

Project
The Highland Council (Inverness West Link) Planning Application

Title
Location Plan

Scale (at A1)
As Shown

Drawn	JJA	Date	23/09/2013
Checked	PB	Date	23/09/2013

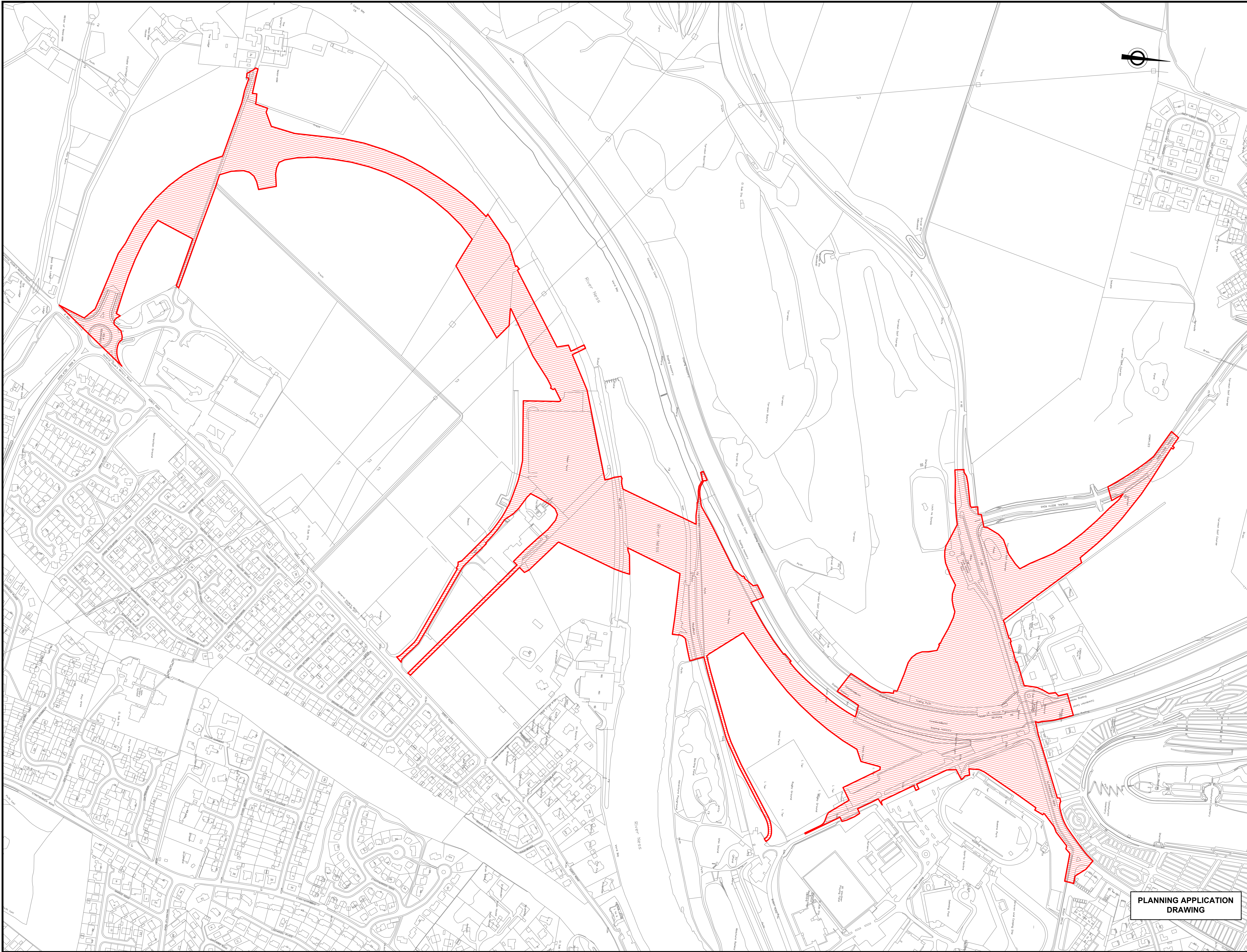
Project No:
HRS7126

Drawing No:
PL02

REPRODUCED BY PERMISSION OF ORDNANCE SURVEY ON BEHALF OF HMSO © CROWN COPYRIGHT AND DATABASE RIGHT 2012. ALL RIGHTS RESERVED. ORDNANCE SURVEY LICENCE NUMBER 100023369.

PLANNING APPLICATION DRAWING

Overview



COPYRIGHT, DESIGNS and PATENTS ACT 1986:
 This drawing may not be reproduced, copied or used in any way without the written permission of the Director of Transport, Environmental & Community & Services.
 © THE HIGHLAND COUNCIL

Notes
 Reproduced from the Ordnance Survey mapping with the permission of the Controller of Her Majesty's Stationary Office © Crown Copyright. Unauthorised reproduction infringes Crown copyright and may lead to prosecution or civil proceedings. The Highland Council 2013 100023369

KEY
 EXTENT OF PLANNING BOUNDARY
 AREA OF RED LINE BOUNDARY 245,403 m²

Revision	Details	By	Date	Surf's

CAPITA SYMONDS
 The Capita Building
 Kingmoor Business Park
 CARLISLE
 Cumbria
 CA6 4SJ
 Tel: 01228 673000
 Fax: 01228 673111



TRANSPORT, ENVIRONMENTAL
 & COMMUNITY SERVICES
 PROJECT DESIGN UNIT
 Osprey House
 Alness Point Business Park
 Alness, IV17 0UP

Phone : 01349 886741
 Fax : 01349 886749
 E-Mail : jim.smith@highland.gov.uk

Project
 The Highland Council (Inverness West Link)
 Planning Application

Title
 Site Plan (Red Line Boundary)

Scale (at A0)
 1:2000

Drawn RG Date 16/08/2013

Checked PB Date 16/08/2013

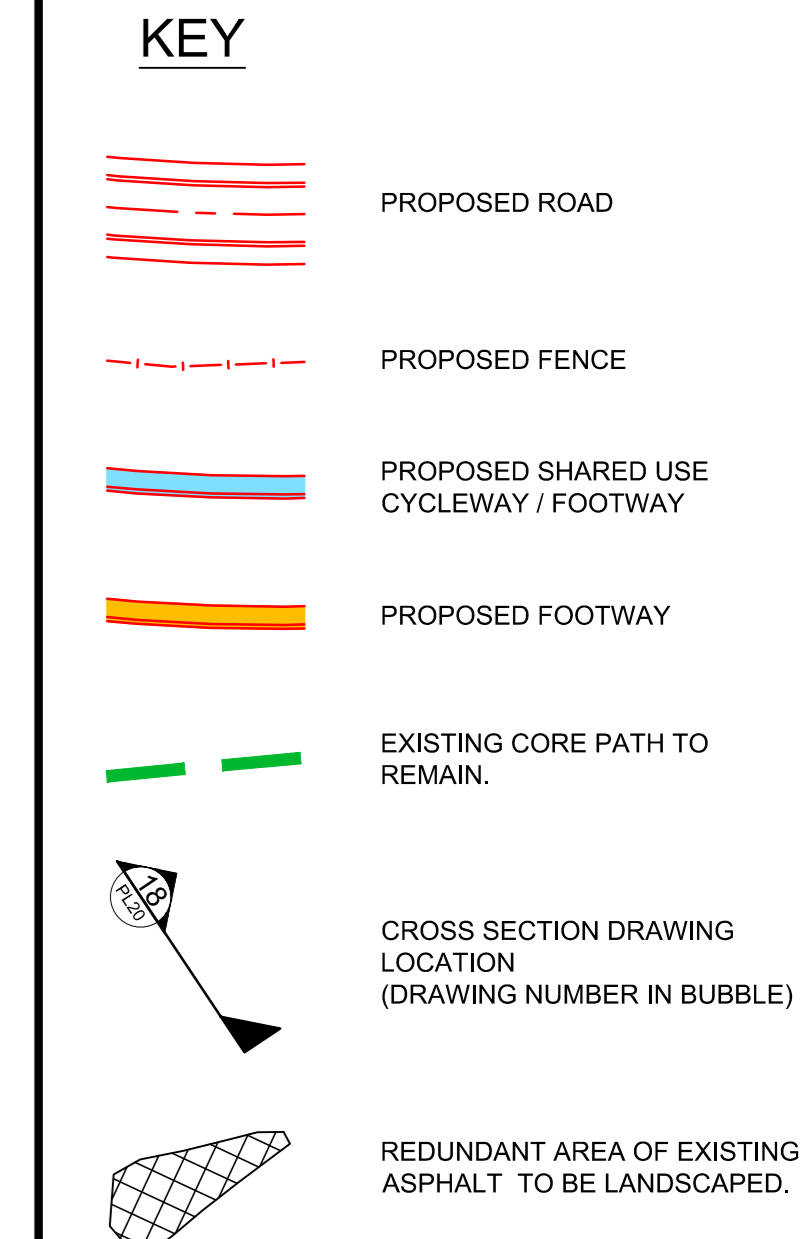
Project No:
 HRS7126

Drawing No: PL01 Rev: -

**PLANNING APPLICATION
 DRAWING**

Notes
 Reproduced from the Ordnance Survey mapping with the permission of the Controller of Her Majesty's Stationery Office © Crown Copyright. Unauthorised reproduction, storage, retrieval, copying, or use in any form is prohibited. The Highland Council 2013 100023569

- DESIGN PARAMETERS:
A82 LINKS
 DESIGN SPEED 60kph
 CARRIAGEWAY WIDTH 7.3m
 CYCLEWAY WIDTH 3m
 VERGE WIDTH 0.5m
GENERAL BOOTH ROAD
 DESIGN SPEED 60kph
 CARRIAGEWAY WIDTH 7.3m
 CYCLEWAY WIDTH 3m
 VERGE WIDTH 0.5m
TORVEAN RBT TO QUEENS PARK RBT LINK
 DESIGN SPEED 60kph
 CARRIAGEWAY WIDTH 7.3m
 CYCLEWAY WIDTH 3m
 VERGE WIDTH 0.5m
TORVEAN ROUNDABOUT
 ICD 60m
 CIRCULATORY CARRIAGEWAY WIDTH 8.4m
 ENTRY WIDTH 7m
 CYCLEWAY WIDTH 3m
 VERGE WIDTH 0.5m
- ROAD LEVELS SHOWN MAY BE VARIED BY +/- 300mm.
- ONLY TRAFFIC SIGNS LARGER THAN 2m x 2m SHOWN ON DRAWING.
- ROAD DRAINAGE COMPRISES A SYSTEM OF POSITIVE RUNOFF COLLECTION DISCHARGING TO GROUND VIA A TWO STAGE SUDS TREATMENT TRAIN. RUNOFF WILL BE COLLECTED USING KERBS AND GULLYS OR COMBINED KERB DRAINAGE UNITS. THE FIRST STAGE OF SUDS TREATMENT WILL CONSIST OF EITHER LINED DRAINAGE DITCHES OR GRAVEL FILTER CHAMBERS AND THE SECOND STAGE WILL BE PROVIDED BY INFILTRATION BASINS. WHERE VIABLE BASINS WILL INCORPORATE HIGH LEVEL OVERFLOWS TO ADJACENT WATERCOURSE. ALL SUCH OVERFLOWS WILL INCORPORATE FLOW CONTROL DEVICES TO LIMIT DISCHARGE RATES TO GREENFIELD EQUIVALENT.
- STREET LIGHTING FOR THE INVERNESS WEST LINK COMPRISES OF A SYSTEM OF 10m HIGH LIGHTING COLUMNS AT APPROXIMATELY 40m SPACING. WITH ADDITIONAL 10m HIGH MULTITREAD COLUMNS IN THE CENTRE OF ROUNDABOUTS. COLUMN SPACING MAY BE CLOSER THAN 40m WHERE NECESSARY TO LIGHT INDIVIDUAL FEATURES SUCH AS BUS STOPS, JUNCTIONS, ETC.
 STREET LIGHTING FOR THE PROPOSED FOOTWAY/CYCLEWAY UNDERPASS LINKS WILL BE BY 5m HIGH COLUMNS AT APPROXIMATELY 20m SPACINGS.
 LANTERNS WILL BE LED DIRECTIONAL UNITS THAT MINIMISE ENERGY CONSUMPTION AND LIGHT SPILLAGE.



Revision Details		By	Date	Surf

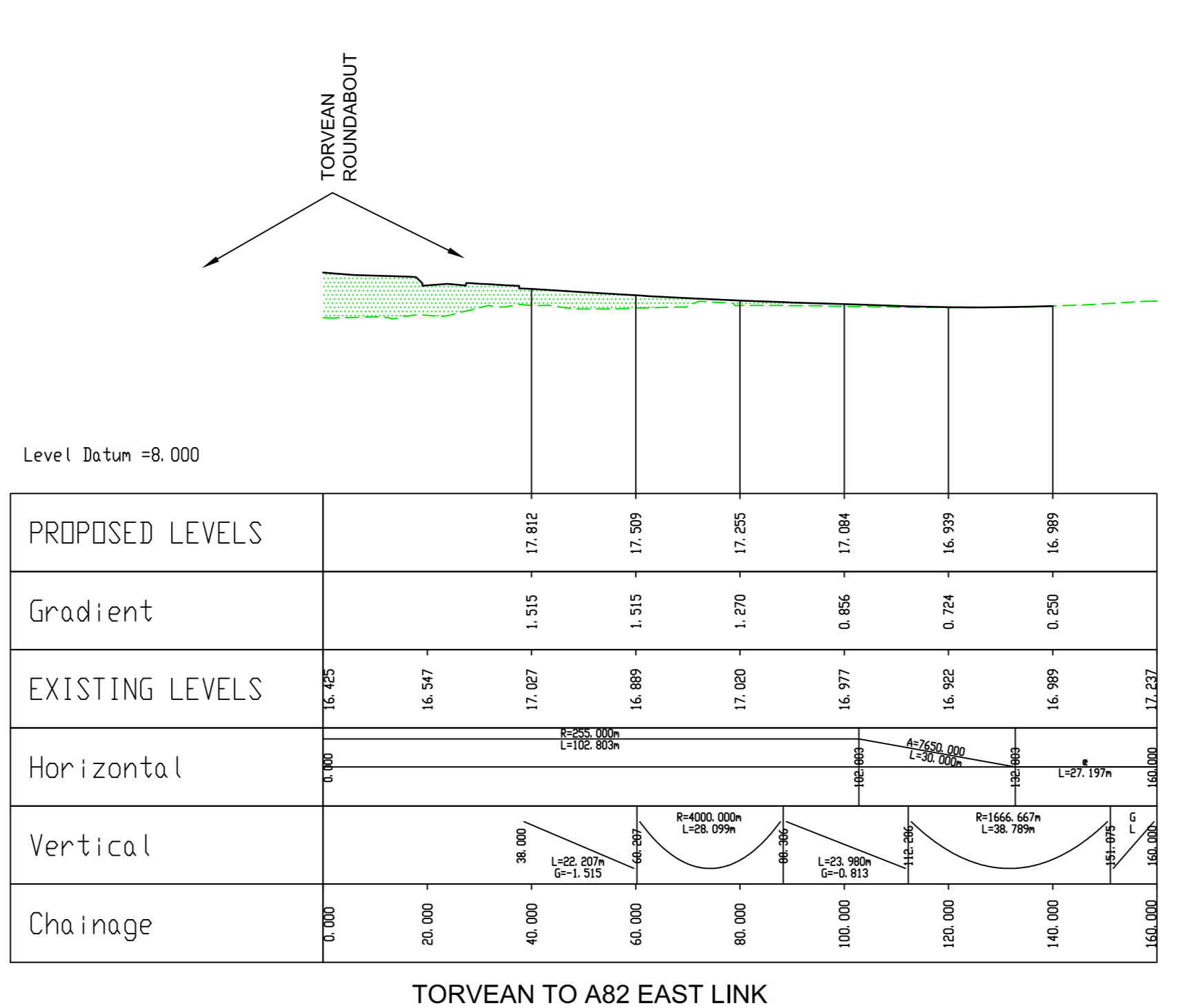
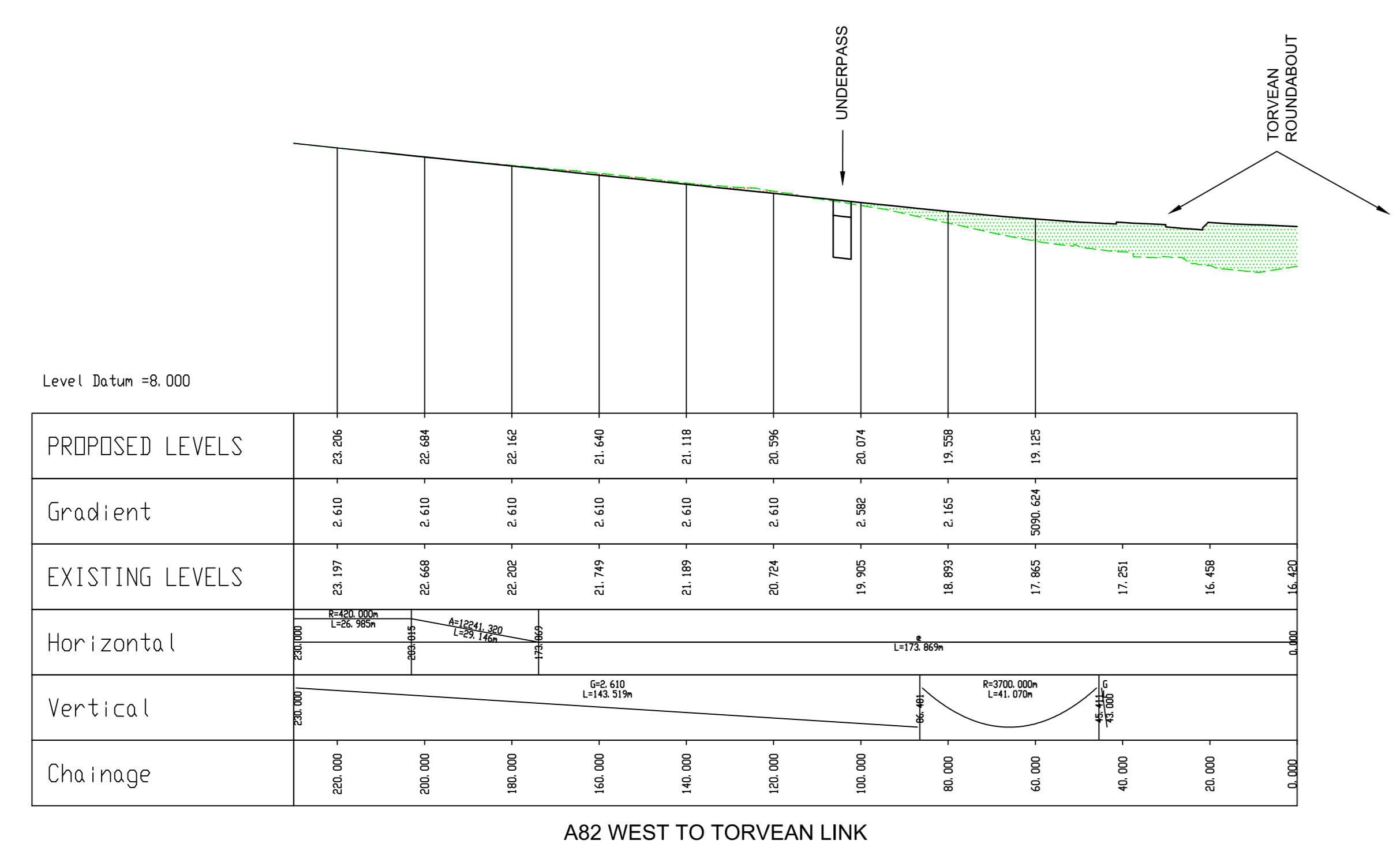
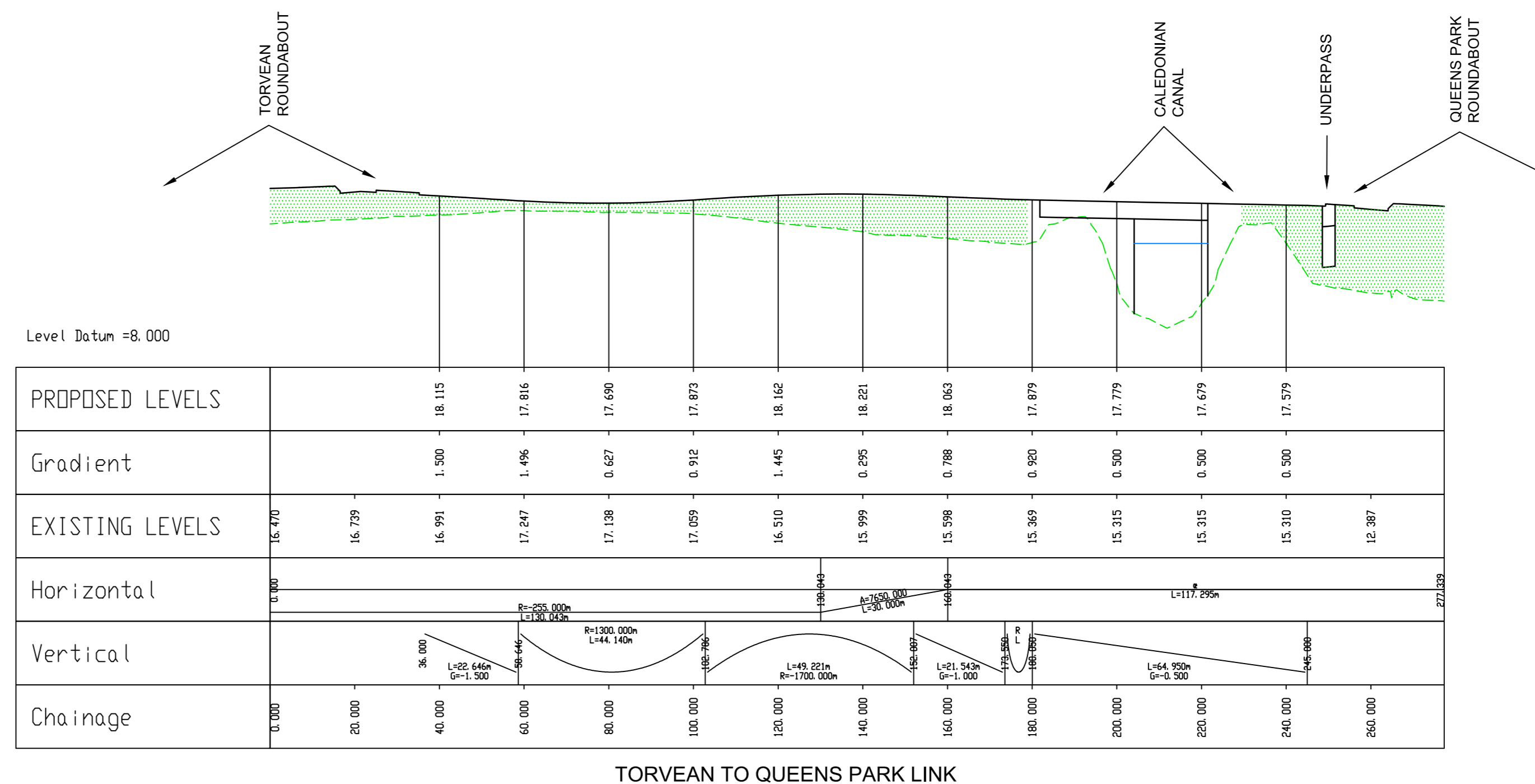
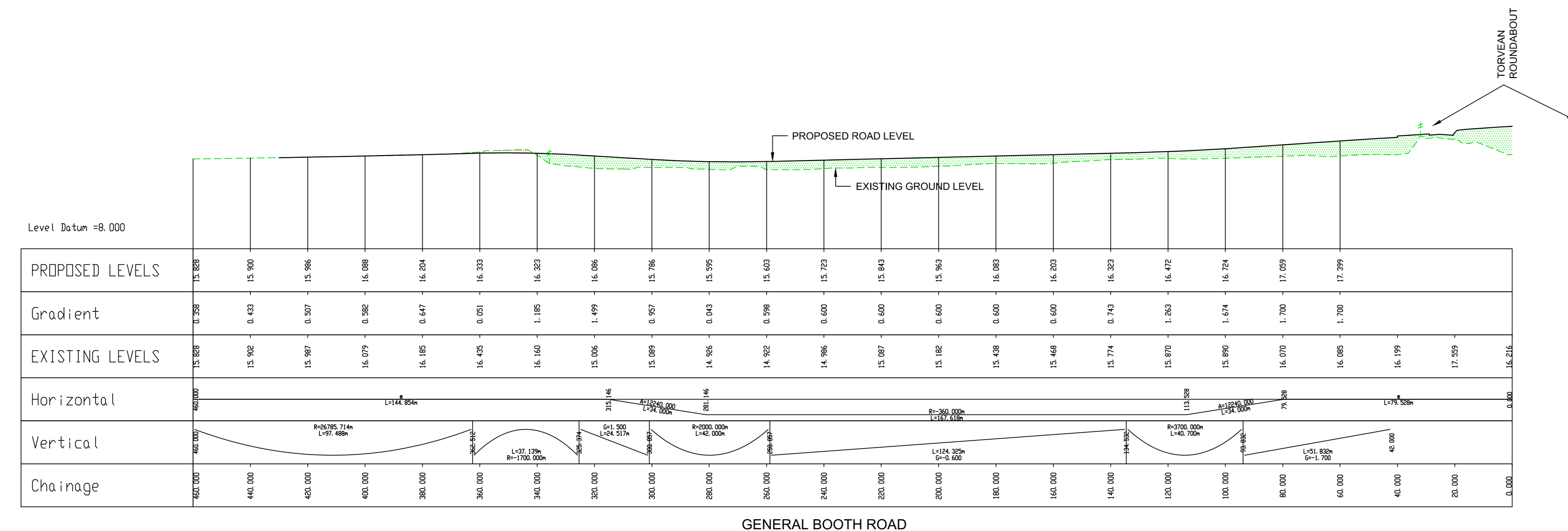
CAPITA SYMONDS
 The Capita Building
 Kingmoor Business Park
 CA9 5LE
 Cumbria
 CA6 4SU
 Tel: 01228 873000
 Fax: 01228 873111



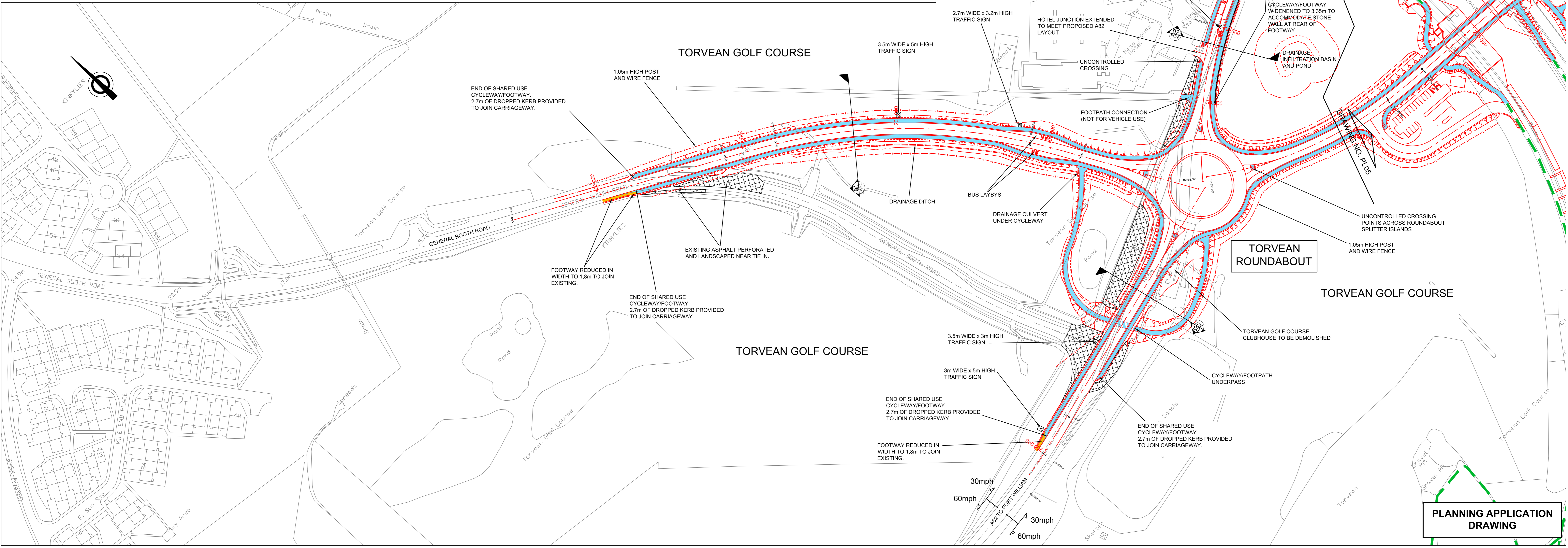
TRANSPORT, ENVIRONMENTAL & COMMUNITY SERVICES
 PROJECT DESIGN UNIT
 Osprey House
 Alness Point Business Park
 Alness, N17 0UP
 Phone : 01349 886741
 Fax : 01349 886749
 E-Mail : j.smith@highland.gov.uk

Project: The Highland Council (Inverness West Link) Planning Application
 Title: Design Details Plan and Longsection Sheet 1 of 4
 Scale: (at A0) 1:1000 H / 1:250 V
 Drawn: JJA Date: 25/09/2013
 Checked: PB Date: 25/09/2013
 Project No: HRS7126
 Drawing No: V2 S03/001 Rev: -

PLANNING APPLICATION DRAWING



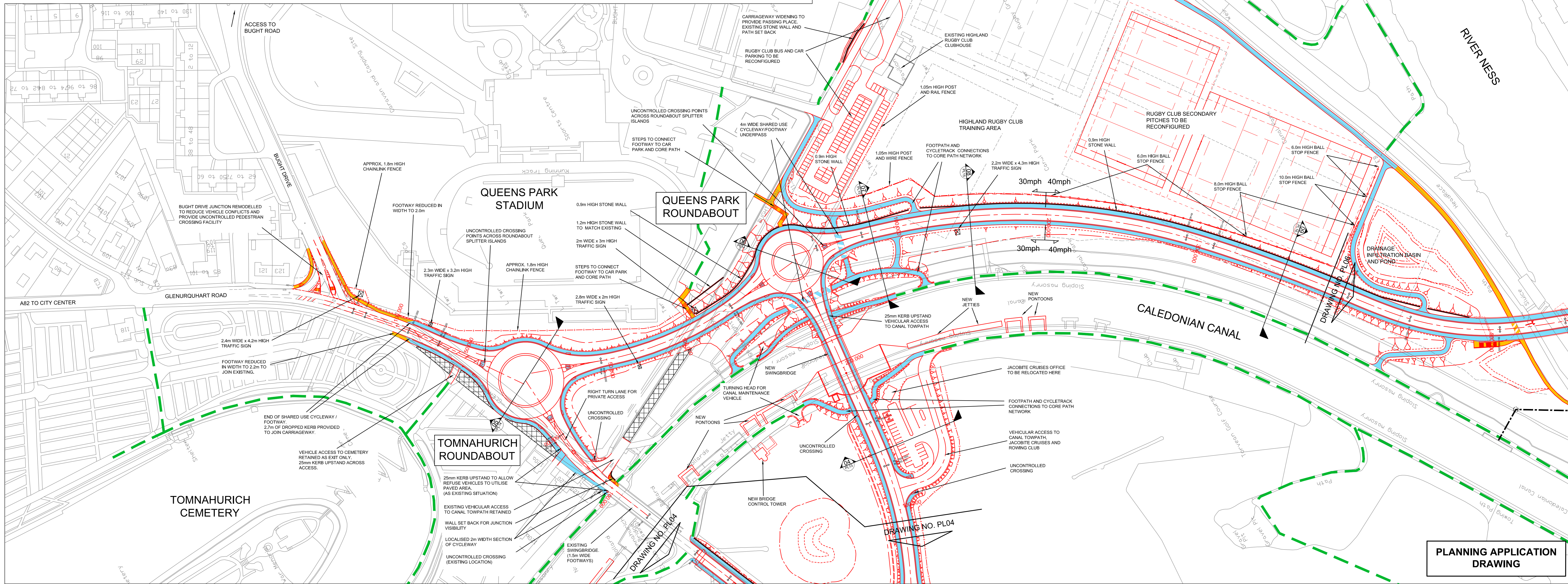
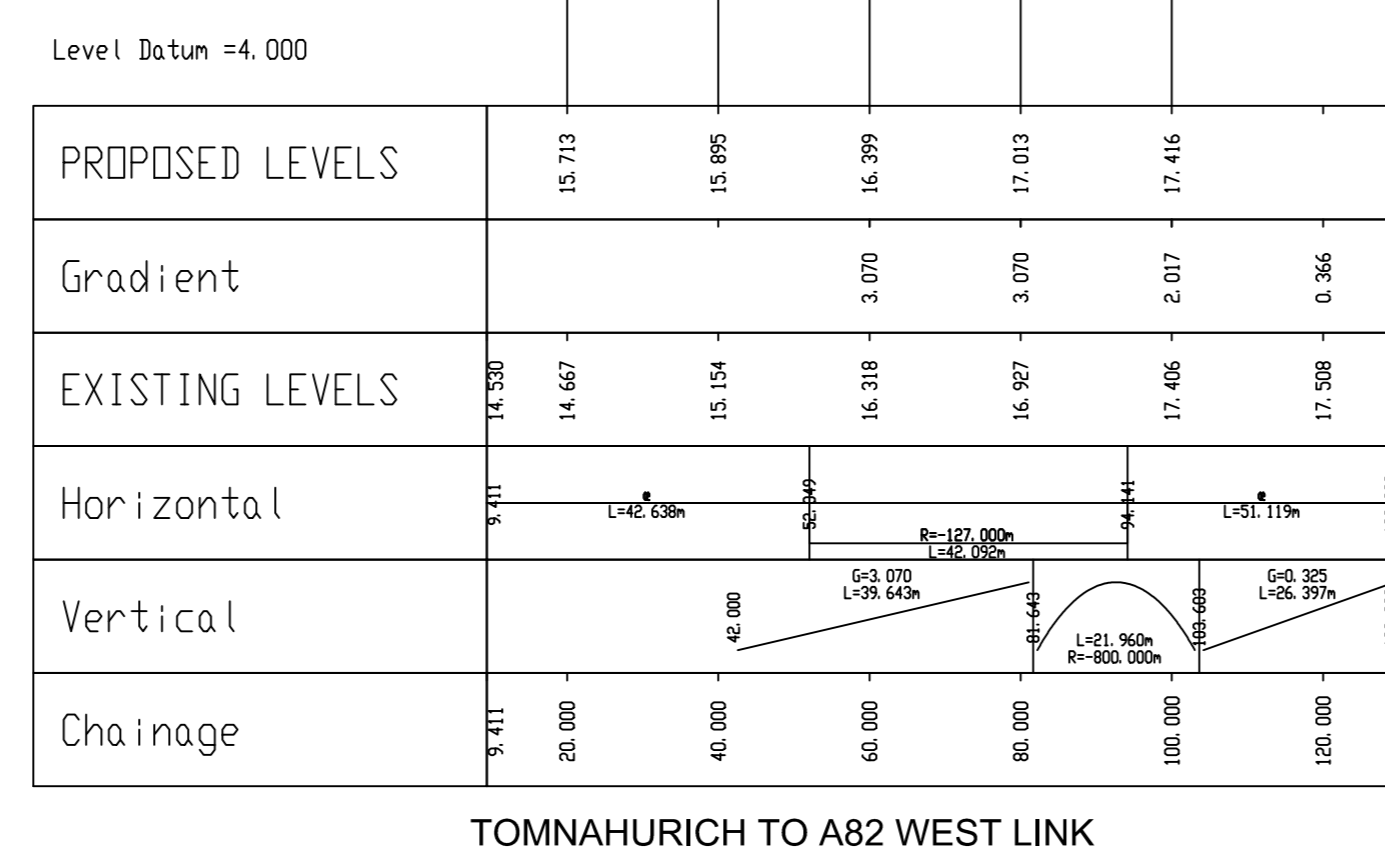
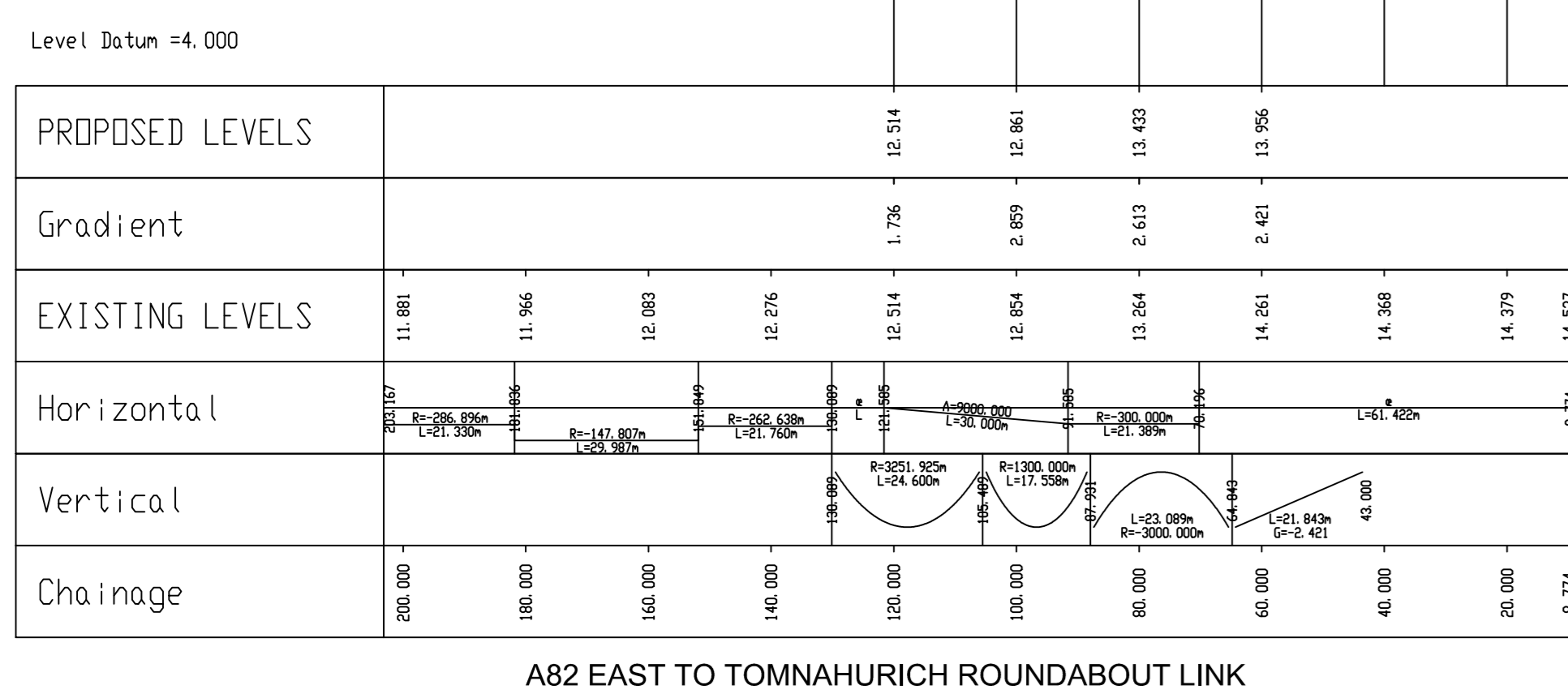
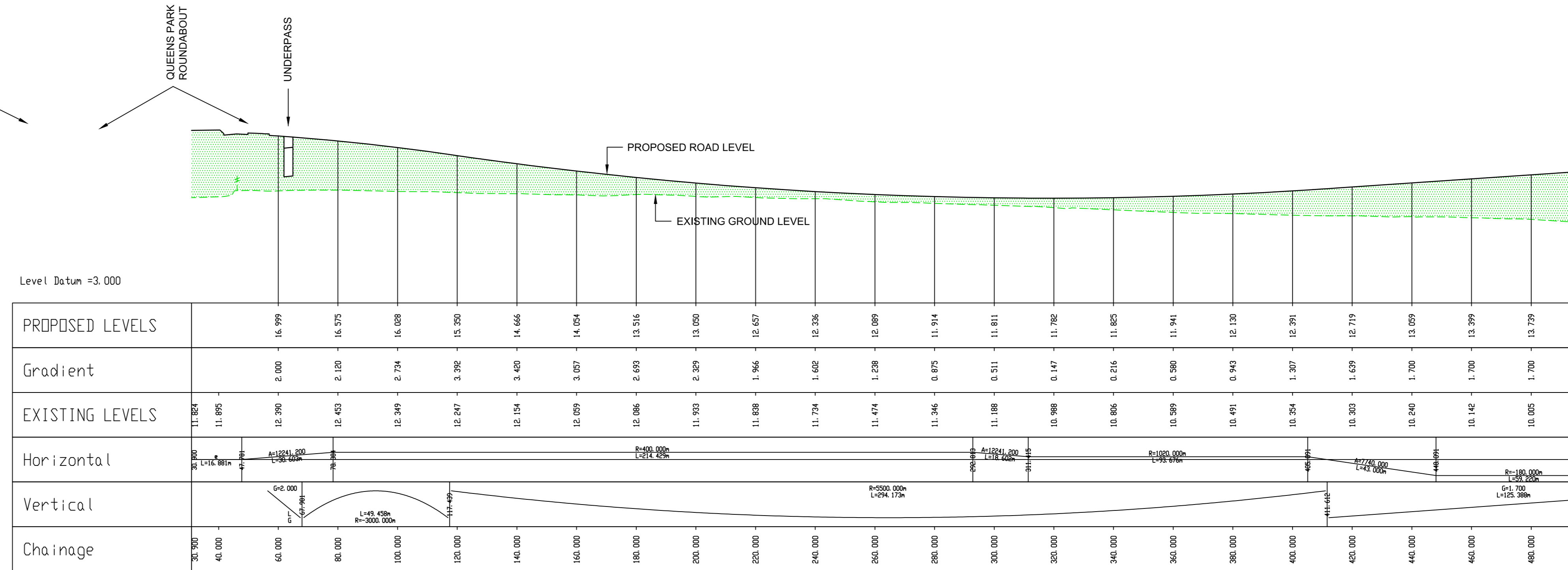
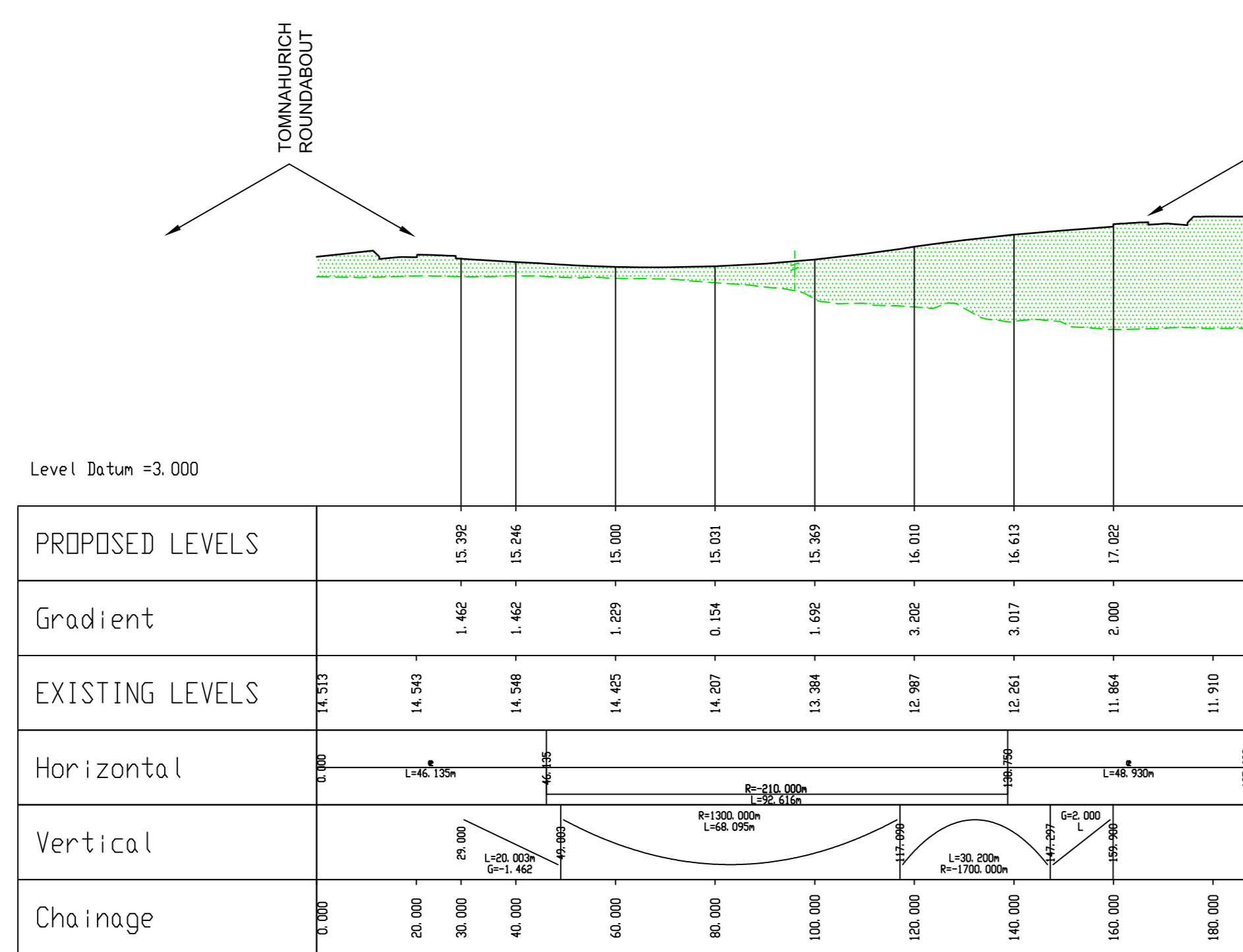
LONG SECTIONS
 (SCALE 1:1000 H / 1:250 V)



PLAN (SCALE 1:1000)

T:\CS059146 Inverness West Link Road V2 Project File 3 Work Activity 1 Design Team 1 Drawings V1 Working\HRS7126_P04 to 07 - Planning Layouts AD 1 to 1000.dwg, 25/09/2013

LONG SECTIONS
(SCALE 1:1000 H / 1:250 V)



Notes
Reproduced from the Ordnance Survey mapping with the permission of the Controller of Her Majesty's Stationery Office. Crown Copyright. Unauthorised reproduction, storage, retrieval, copying, or use in any form is prohibited.
The Highland Council 2013 100223569

- DESIGN PARAMETERS:**
A82 LINKS
DESIGN SPEED 60kph
CARRIAGEWAY WIDTH 7.3m
CYCLEWAY WIDTH 3m
VERGE WIDTH 0.5m
TOMNAHURICH TO QUEENS PARK LINK
DESIGN SPEED 60kph
CARRIAGEWAY WIDTH 7.3m
CYCLEWAY WIDTH 3m
VERGE WIDTH 0.5m
QUEENS PARK TO MILL LAIDE LINK
DESIGN SPEED 70kph
CARRIAGEWAY WIDTH 7.3m
CYCLEWAY WIDTH 3m
VERGE WIDTH 0.5m
TOMNAHURICH ROUNDABOUT
ICD 50m
CIRCULATORY CARRIAGEWAY WIDTH 7.4m
ENTRY WIDTHS 6.3m TO 6.8m
CYCLEWAY WIDTH 3m
VERGE WIDTH 0.5m
QUEENS PARK ROUNDABOUT
ICD 41.5m
CIRCULATORY CARRIAGEWAY WIDTH 7.85m
ENTRY WIDTHS 6.55m
CYCLEWAY WIDTH 3m
VERGE WIDTH 0.5m
- ROAD LEVELS SHOWN MAY BE VARIED BY +/- 300mm.
- ONLY TRAFFIC SIGNS LARGER THAN 2m x 2m SHOWN ON DRAWING.
- ROAD DRAINAGE COMPRISES A SYSTEM OF POSITIVE RUNOFF COLLECTION DISCHARGING TO GROUND VIA A TWO STAGE SUDS TREATMENT TRAIN. RUNOFF WILL BE COLLECTED USING KERBS AND GULLYS OR COMBINED KERB DRAINAGE UNITS. THE FIRST STAGE OF SUDS TREATMENT WILL CONSIST OF EITHER LINED DRAINAGE DITCHES OR GRAVEL FILTER CHAMBERS AND THE SECOND STAGE WILL BE PROVIDED BY INFILTRATION BASINS. WHERE Viable. BASINS WILL INCORPORATE HIGH LEVEL OVERFLOWS TO ADJACENT WATERCOURSE. ALL SUCH OVERFLOWS WILL INCORPORATE FLOW CONTROL DEVICES TO LIMIT DISCHARGE RATES TO GREENFIELD EQUIVALENT.
- STREET LIGHTING FOR THE INVERNESS WEST LINK COMPRISES OF A SYSTEM OF 10m HIGH LIGHTING COLUMNS AT APPROXIMATELY 40m SPACING, WITH ADDITIONAL 10m HIGH MULTITRACED COLUMNS IN THE CENTRE OF ROUNDABOUTS. COLUMN SPACING MAY BE CLOSER THAN 40m WHERE NECESSARY TO LIGHT INDIVIDUAL FEATURES SUCH AS BUS STOPS, JUNCTIONS, ETC.
STREET LIGHTING FOR THE PROPOSED FOOTWAY/CYCLEWAY UNDERPASS LINKS WILL BE BY 5m HIGH COLUMNS AT APPROXIMATELY 20m SPACINGS.
LANTERNS WILL BE LED DIRECTIONAL UNITS THAT MINIMISE ENERGY CONSUMPTION AND LIGHT SPILLAGE.

KEY

- PROPOSED ROAD
- PROPOSED FENCE
- PROPOSED SHARED USE CYCLEWAY / FOOTWAY
- PROPOSED FOOTWAY
- EXISTING CORE PATH TO REMAIN
- CROSS SECTION DRAWING LOCATION (DRAWING NUMBER IN BUBBLE)
- REDUNDANT AREA OF EXISTING ASPHALT TO BE LANDSCAPED

Revision Details	By	Date	Surf
------------------	----	------	------

CAPITA SYMONDS
The Capita Building
Kingmoor Business Park
CAMUSIE
Cumbernauld
G64 4SJ
Tel: 01228 873000
Fax: 01228 873111

The Highland Council
Comhairle na Gàidhealtachd
TRANSPORT, ENVIRONMENTAL & COMMUNITY SERVICES
PROJECT DESIGN UNIT
Osprey House
Alness Point Business Park
Alness, N17 0UP
Phone: 01349 886741
Fax: 01349 886749
E-mail: j.smyth@highland.gov.uk

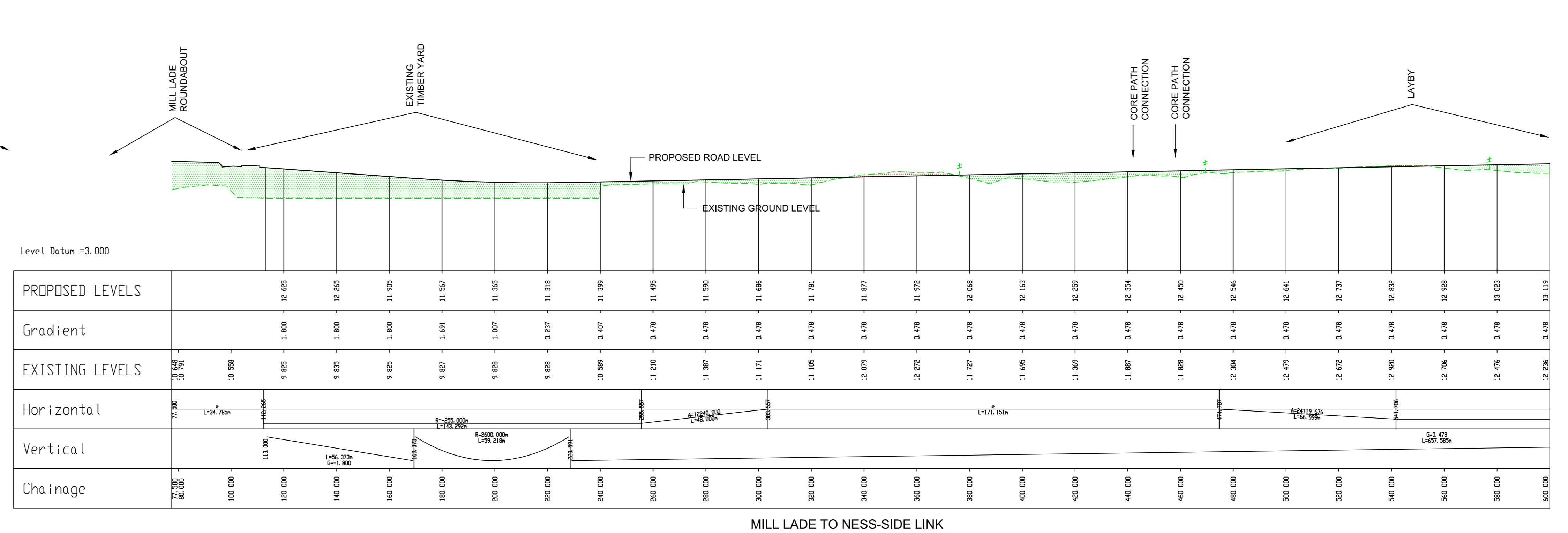
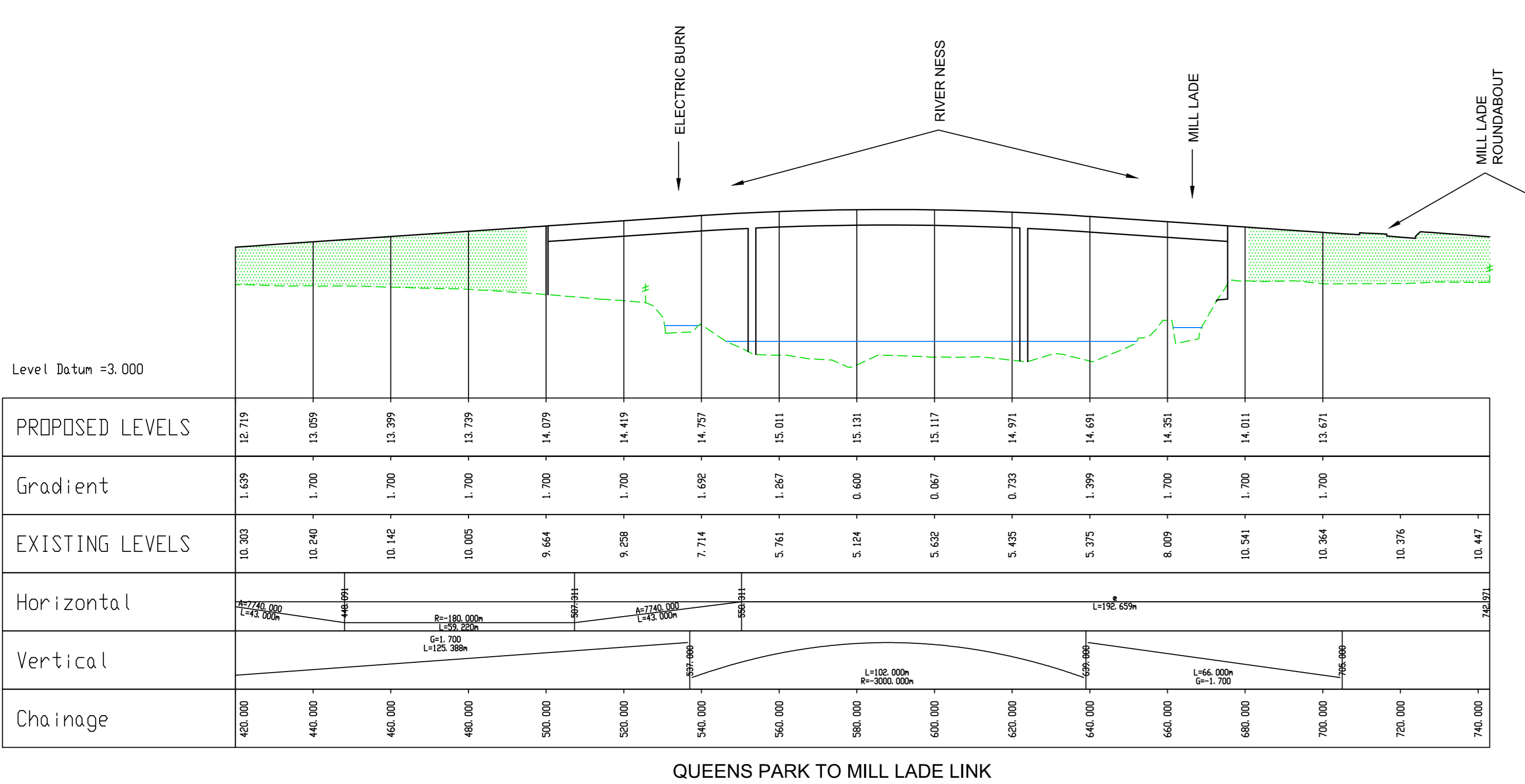
The Highland Council
(Inverness West Link)
Planning Application

Design Details
Plan and Longsection
Sheet 2 of 4

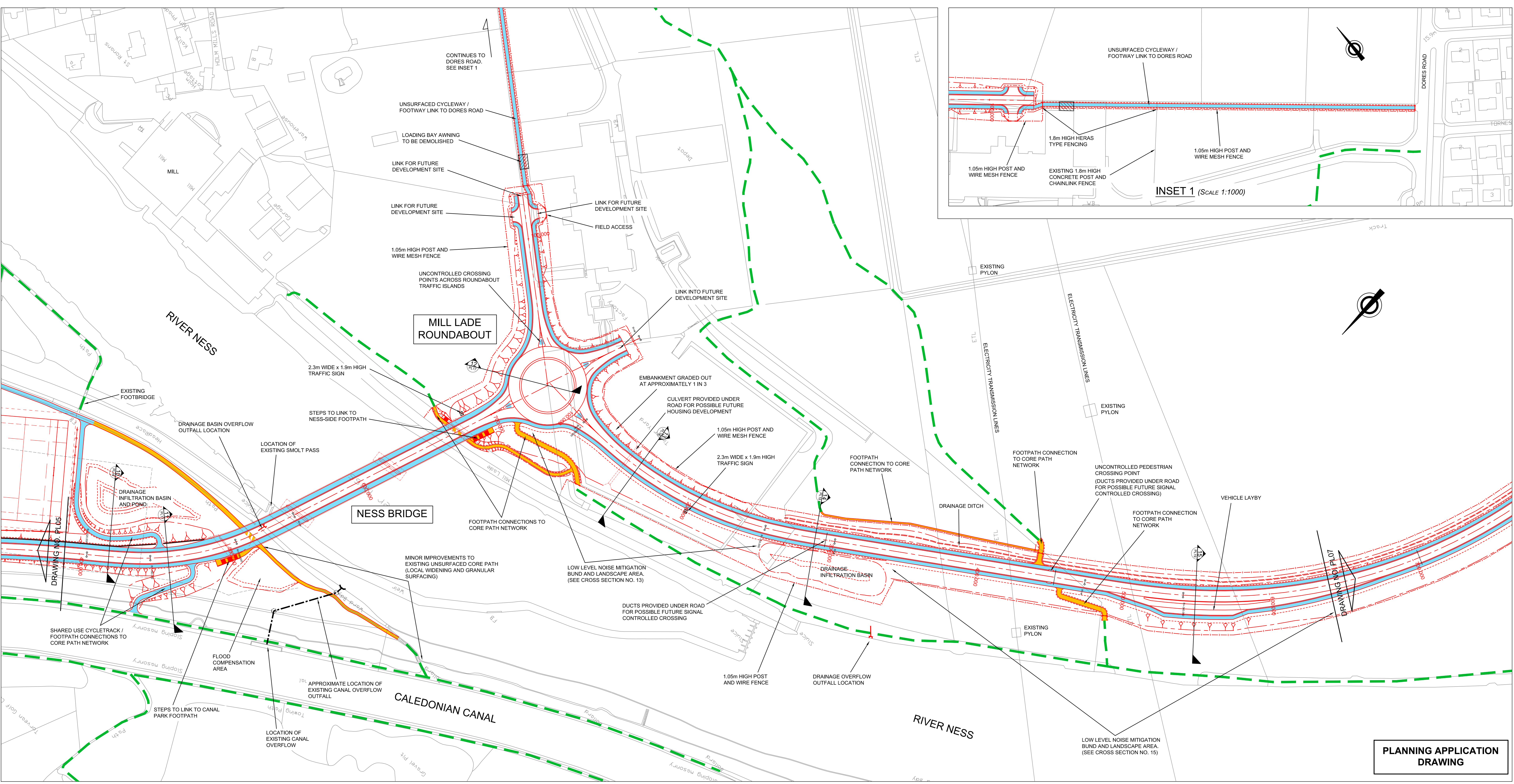
Scale (at A0)
1:1000 H / 1:250 V

Drawn	JJA	Date	25/09/2013
Checked	PB	Date	25/09/2013
Project No:	HRS7126		
Drawing No:	V2_S03_002	Rev:	-

- DESIGN PARAMETERS:
 QUEENS PARK TO MILL LADE LINK
 DESIGN SPEED 70km/h
 CARRIAGEWAY WIDTH 7.3m
 CYCLEWAY WIDTH 3m
 VERGE WIDTH 0.5m
 MILL LADE TO NESS-SIDE LINK
 DESIGN SPEED 70km/h
 CARRIAGEWAY WIDTH 7.3m
 CYCLEWAY WIDTH 3m
 VERGE WIDTH 0.5m
 MILL LADE ROUNDABOUT
 ICD 50m
 CIRCULARITY CARRIAGEWAY WIDTH 7.4m
 ENTRY WIDTHS 6.2m TO 6.6m
 CYCLEWAY WIDTH 3m
 VERGE WIDTH 0.5m
- ROAD LEVELS SHOWN MAY BE VARIED BY +/- 300mm.
- ONLY TRAFFIC SIGNS LARGER THAN 2m x 2m SHOWN ON DRAWING.
- ROAD DRAINAGE COMPRISES A SYSTEM OF POSITIVE RUNOFF COLLECTION DISCHARGING TO GROUND VIA A TWO STAGE SUDS TREATMENT TRAIN. RUNOFF WILL BE COLLECTED USING KERBS AND GULLYS OR COMBINED KERB DRAINAGE UNITS. THE FIRST STAGE OF SUDS TREATMENT WILL CONSIST OF EITHER LINED DRAINAGE DITCHES OR GRAVEL FILTER CHAMBERS AND THE SECOND STAGE WILL BE PROVIDED BY INFILTRATION BASINS. WHERE VISIBLE BASINS WILL INCORPORATE HIGH LEVEL OVERFLOWS TO ADJACENT WATERCOURSE. ALL SUCH OVERFLOWS WILL INCORPORATE FLOW CONTROL DEVICES TO LIMIT DISCHARGE RATES TO GREENFIELD EQUIVALENT.
- STREET LIGHTING FOR THE INVERNESS WEST LINK COMPRISES OF A SYSTEM OF 10m HIGH LIGHTING COLUMNS AT APPROXIMATELY 40m SPACING, WITH AN ADDITIONAL 10m HIGH MULTITRUNK COLUMN IN THE CENTER OF ROUNDABOUTS. COLUMN SPACING MAY BE CLOSER THAN 40m WHERE NECESSARY TO LIGHT INDIVIDUAL FEATURES SUCH AS BUS STOPS, JUNCTIONS, ETC.
 STREET LIGHTING OVER THE RIVER NESS BRIDGE COMPRISES OF PARAPET LEVEL LANTERNS AT APPROXIMATELY 10m SPACING.
 STREET LIGHTING FOR THE FUTURE DEVELOPMENT LINKS FROM MILL LADE ROUNDABOUT COMPRISES OF 8m HIGH COLUMNS AT APPROXIMATELY 40m SPACING. LANTERNS WILL BE L.E.D. DIRECTIONAL UNITS THAT MINIMISE ENERGY CONSUMPTION AND LIGHT SPILLAGE.



LONG SECTIONS
 (SCALE 1:1000 H / 1:250 V)



PLAN (SCALE 1:1000)

KEY

- PROPOSED ROAD
- PROPOSED FENCE
- PROPOSED SHARED USE CYCLEWAY / FOOTWAY
- PROPOSED FOOTWAY
- EXISTING CORE PATH TO REMAIN
- CROSS SECTION DRAWING LOCATION (DRAWING NUMBER IN BUBBLE)

Revision Details

By	Date	Sur

CAPITA SYMONDS
 The Capita Building
 Kingnoor Business Park
 CARISBLE
 Cumbernauld
 G64 4SJ
 Tel: 01228 873000
 Fax: 01228 873111

The Highland Council
 Comhairle na Gàidhealtachd
 TRANSPORT, ENVIRONMENTAL & COMMUNITY SERVICES
 PROJECT DESIGN UNIT
 Osprey House
 Alness Point Business Park
 Alness, N17 0UP
 Phone: 01349 886741
 Fax: 01349 886749
 E-Mail: j.smymon@highland.gov.uk

The Highland Council
 (Inverness West Link)
 Planning Application

Design Details
 Plan and Longsection
 Sheet 3 of 4

Scale (at A0)
 1:1000 H / 1:250 V

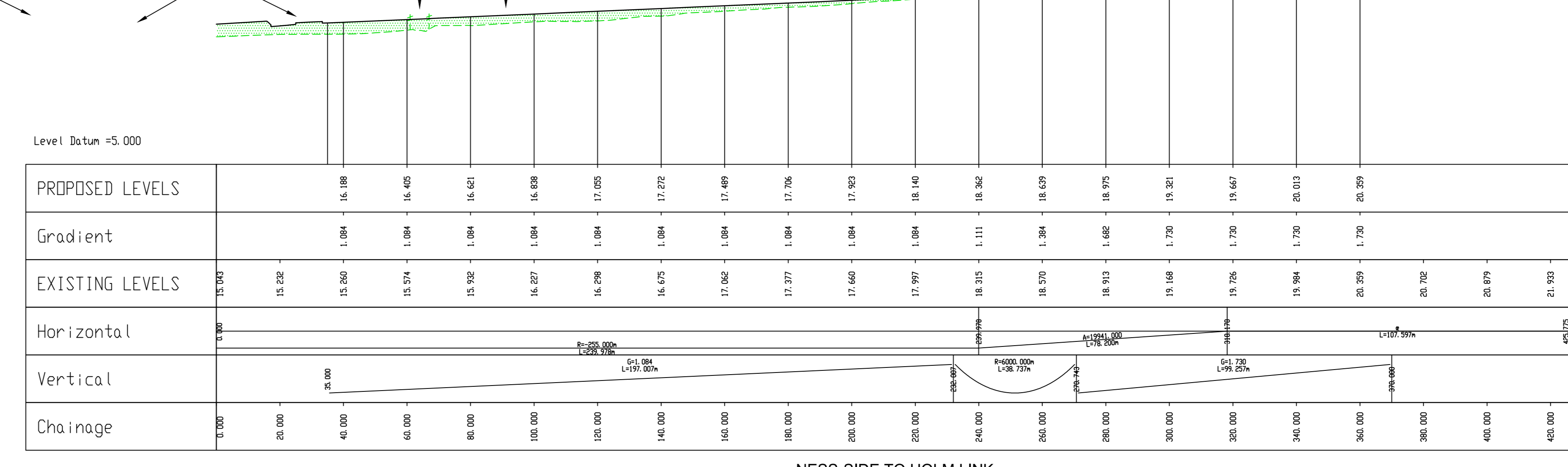
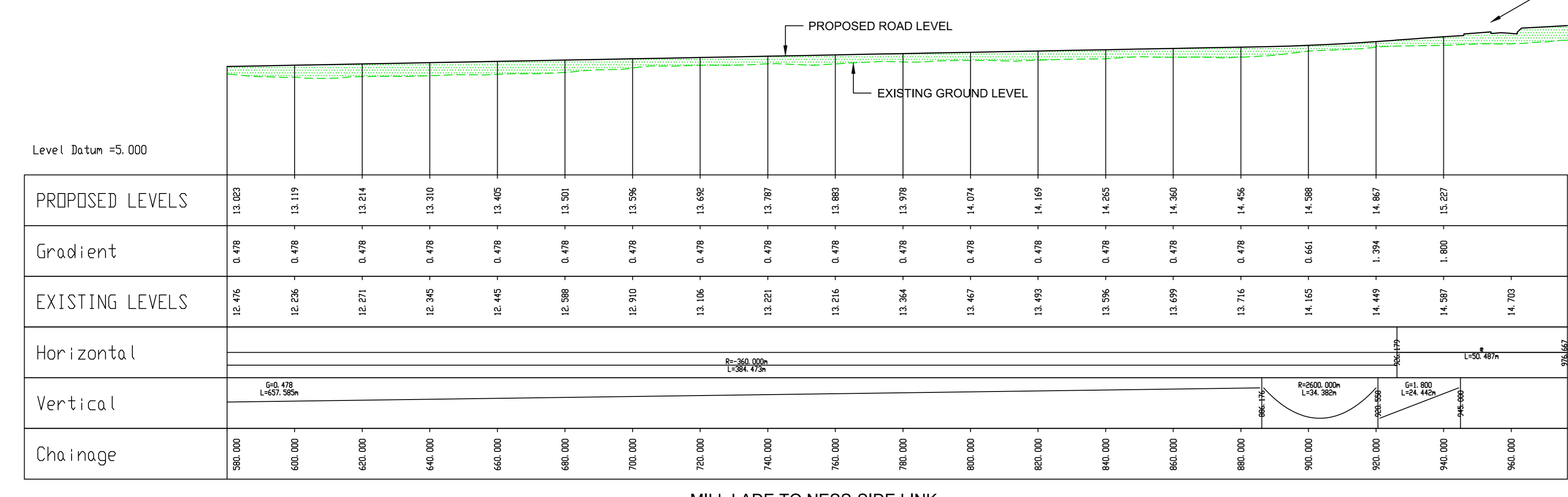
Drawn	Date
JJA	25/09/2013
Checked	Date
PB	25/09/2013

Project No: HRS7126
 Drawing No: V2_S03/003

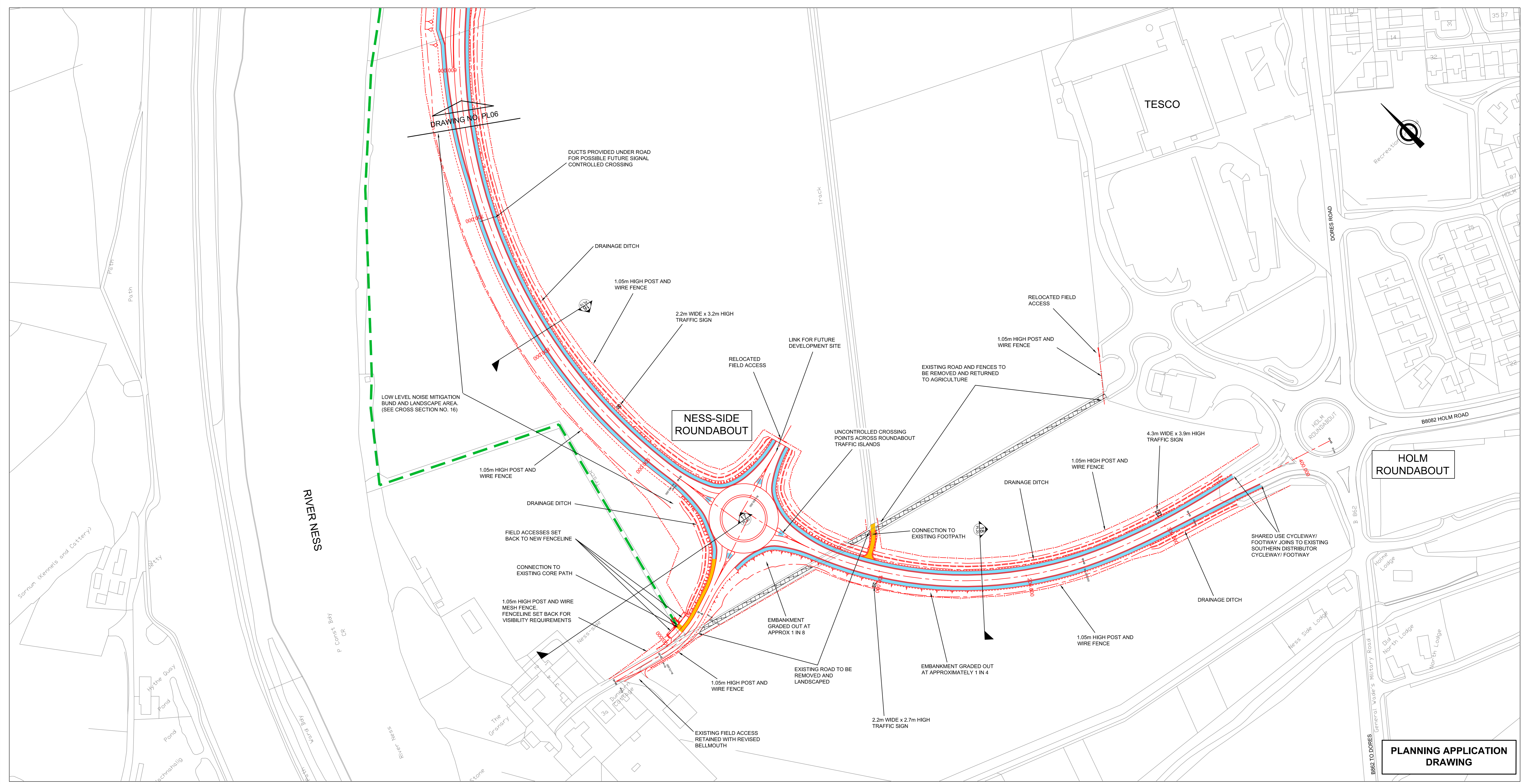
T:\CS059146 Inverness West Link Road V2 Project File 3 Work Activity 1 Design Team 1 Drawings\1 Working\HRS7126_P04_P07_Planmsh_Laysheet_A0_1to1000.dwg, 25/09/2013

Notes
 Reproduced from the Ordnance Survey mapping with the permission of the Controller of the Majesty's Stationery Office © Crown Copyright. Unauthorised reproduction, storage, copying, or use in any way is prohibited. Ordnance Survey 2013 100023569

- DESIGN PARAMETERS:
 MILL LADE TO NESS-SIDE LINK
 DESIGN SPEED 70km/h
 CARRIAGEWAY WIDTH 7.3m
 CYCLEWAY WIDTH 3m
 VERGE WIDTH 0.5m
 NESS-SIDE TO HOLM LINK
 DESIGN SPEED 70km/h
 CARRIAGEWAY WIDTH 7.3m
 CYCLEWAY WIDTH 3m
 VERGE WIDTH 0.5m
 NESS-SIDE ROUNDABOUT
 R2D 47m
 CIRCULATORY CARRIAGEWAY WIDTH 7.6m
 ENTRY WIDTHS 6.8m
 CYCLEWAY WIDTH 3m
 VERGE WIDTH 0.5m
- ROAD LEVELS SHOWN MAY BE VARIED BY +/- 300mm.
- ONLY TRAFFIC SIGNS LARGER THAN 2m x 2m SHOWN ON DRAWING
- ROAD DRAINAGE COMPRISES A SYSTEM OF POSITIVE RUNOFF COLLECTION DISCHARGING TO GROUND VIA A TWO STAGE SUDS TREATMENT TRAIN. RUNOFF WILL BE COLLECTED USING KERBS AND GULLIES OR COMBINED KERB DRAINAGE UNITS. THE FIRST STAGE OF SUDS TREATMENT WILL CONSIST OF EITHER LINED DRAINAGE DITCHES OR GRAVEL FILTER CHAMBERS AND THE SECOND STAGE WILL BE PROVIDED BY INFILTRATION BASINS. WHERE VIABLE BASINS WILL INCORPORATE HIGH LEVEL OVERFLOWS TO ADJACENT WATERCOURSE. ALL SUCH OVERFLOWS WILL INCORPORATE FLOW CONTROL DEVICES TO LIMIT DISCHARGE RATES TO GREENFIELD EQUIVALENT.
- STREET LIGHTING FOR THE INVERNESS WEST LINK COMPRISES OF A SYSTEM OF 10m HIGH LIGHTING COLUMNS AT APPROXIMATELY 40m SPACINGS. WITH AN ADDITIONAL 10m HIGH MULTITIER COLUMN IN THE CENTRE OF ROUNDABOUTS. COLUMN SPACING MAY BE CLOSER THAN 40m WHERE NECESSARY TO LIGHT INDIVIDUAL FEATURES SUCH AS BUS STOPS, JUNCTIONS, ETC.
 STREET LIGHTING FOR THE LINK INTO NESS-SIDE COMPRISES OF 8m HIGH COLUMNS AT APPROXIMATELY 40m SPACING. LANTERNS WILL BE L.E.D. DIRECTIONAL UNITS THAT MINIMISE ENERGY CONSUMPTION AND LIGHT SPILLAGE.



LONG SECTIONS
 (SCALE 1:1000 H / 1:250 V)



KEY

- PROPOSED ROAD
- PROPOSED FENCE
- PROPOSED SHARED USE CYCLEWAY / FOOTWAY
- PROPOSED FOOTWAY
- EXISTING CORE PATH TO REMAIN
- CROSS SECTION DRAWING LOCATION (DRAWING NUMBER IN BUBBLE)
- REDUNDANT AREA OF EXISTING ASPHALT TO BE LANDSCAPED.

Revision Details

By	Date	Surf

CAPITA SYMONDS
 The Capita Building
 Kingnoor Business Park
 CARISLE
 Cumbria
 CA6 4SU
 Tel: 01228 873000
 Fax: 01228 873111

The Highland Council
 Comhairle na Gàidhealtachd
 TRANSPORT, ENVIRONMENTAL & COMMUNITY SERVICES
 PROJECT DESIGN UNIT
 Osprey House
 Alness Point Business Park
 Alness, IV17 0UP
 Phone: 01349 886741
 Fax: 01349 886749
 E-Mail: j.symon@highland.gov.uk

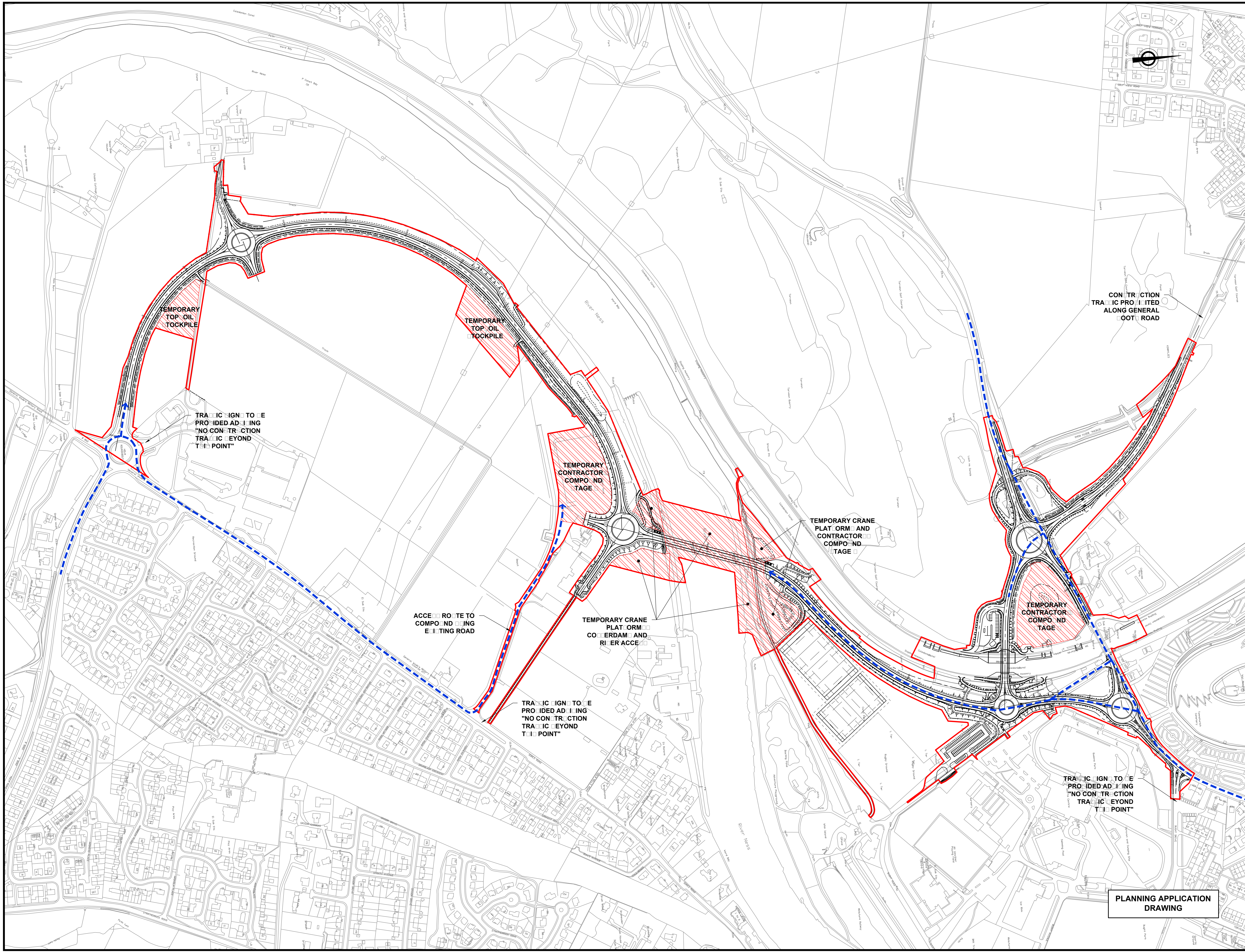
Project: **The Highland Council (Inverness West Link) Planning Application**

Title: **Design Details Plan and Longsection Sheet 4 of 4**

Scale (at A0): **1:1000 H / 1:250 V**

Drawn: JJA Date: 25/09/2013
 Checked: PB Date: 25/09/2013

Project No: **HRS7126**
 Drawing No: **V2_S03/004** Rev: -



COPYRIGHT, DESIGNS and PATENTS ACT 1986:
 This drawing may not be reproduced, copied or used in any way without the written permission of the Director of Transport, Environmental & Community Services.
 © THE HIGHLAND COUNCIL

Notes
 Reproduced from the Ordnance Survey mapping with the permission of the Controller of Her Majesty's Stationary Office © Crown Copyright. Unauthorised reproduction infringes Crown copyright and may lead to prosecution or civil proceedings. The Highland Council 2013 100023369

- KEY**
- PLANNING RED LINE BOUNDARY
 - TEMPORARY ACCESS ROUTE

- NOTE:**
1. INDICATIVE ARRANGEMENT ONLY. LOCATION OF ADDITIONAL CONTRACTOR'S COMPOUNDS AND STOCKPILE AREAS SUBJECT TO AGREEMENT BETWEEN CONTRACTOR AND LANDOWNERS.
 2. MATERIALS ARE EXPECTED TO BE DELIVERED FROM QUARRY ON DEMAND FOR DIRECT PLACEMENT, SO NO STOCKPILING OTHER THAN TOPSOIL IS ANTICIPATED.
 3. ADVANCED SIGNING PROVISION NOT SHOWN.

CONSTRUCTION TRAFFIC PROHIBITED ALONG GENERAL FOOT ROAD

Revision	Details	By	Date	Surf's

CAPITA SYMONDS
 The Capita Building
 Kingmoor Business Park
 CARLISLE
 Cumbria
 CA6 4SJ
 Tel: 01228 673000
 Fax: 01228 673111

The Highland Council
 Comhairle na Gàidhealtachd

TRANSPORT, ENVIRONMENTAL & COMMUNITY SERVICES
 PROJECT DESIGN UNIT
 Osprey House
 Alness Point Business Park
 Alness, IV17 0UP

Phone : 01349 886741
 Fax : 01349 886749
 E-Mail : jim.smith@highland.gov.uk

Project
 The Highland Council (Inverness West Link)
 Planning Application

Title
 Temporary Compounds

Scale (at A0)
 1:2000

Drawn	RG	Date	01/10/2013
Checked	PB	Date	01/10/2013

Project No:
 HRS7126

Drawing No:
 V2 S03/005

PLANNING APPLICATION DRAWING