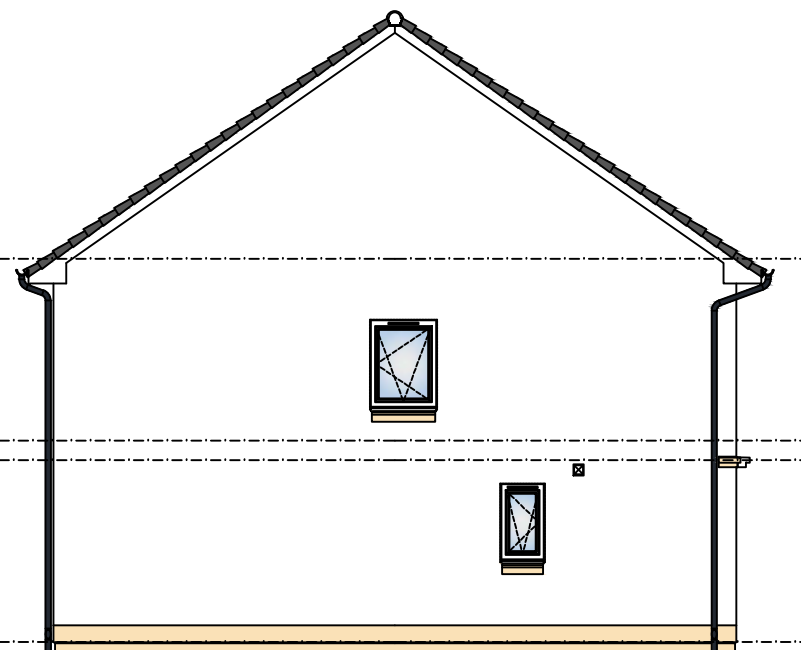
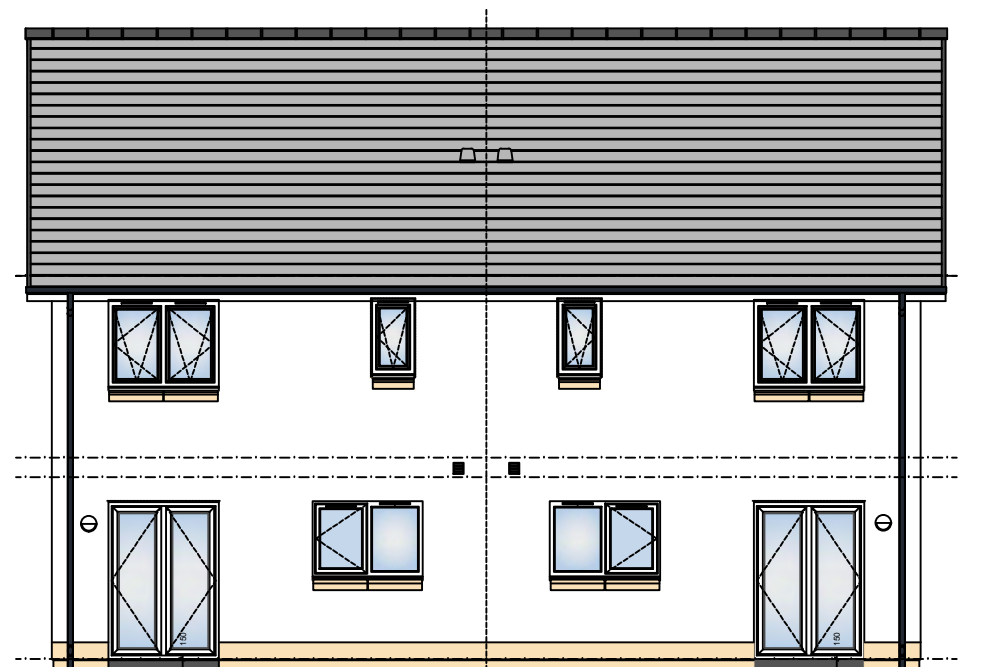




Front Elevation



Gable Elevation



Rear Elevation



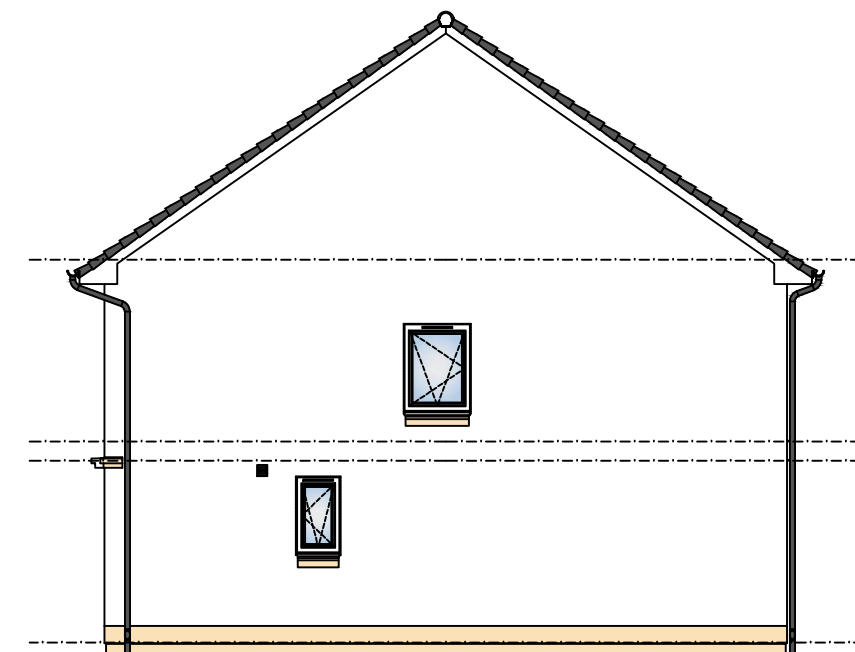
Perspective

General Materials & Finishes

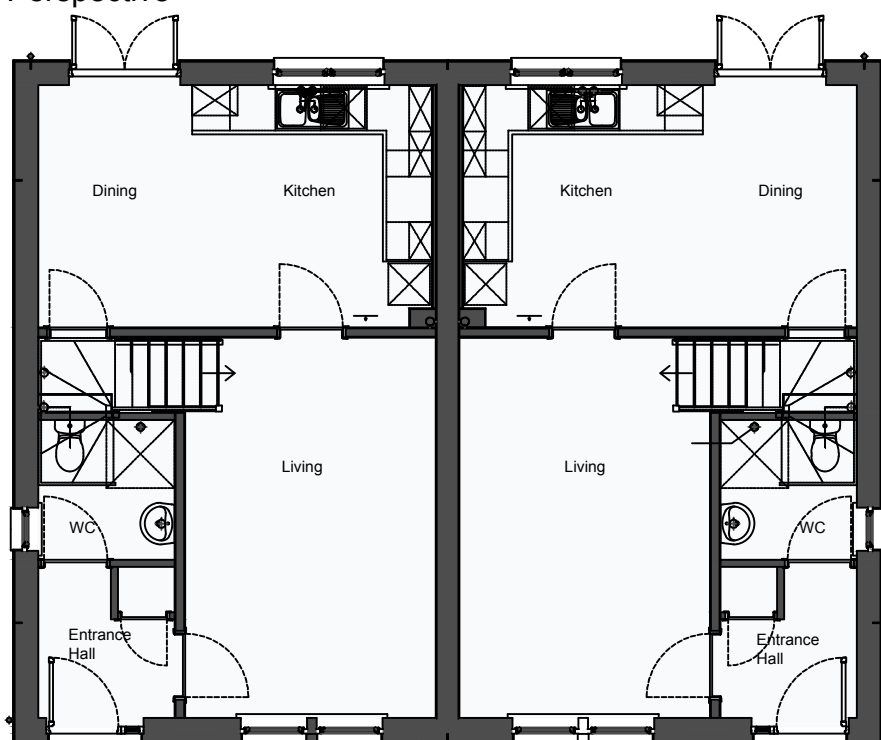
Roof - Red or Dark grey concrete tile
 Soffits & fascia - White uPvc
 Rainwater goods - Black uPvc
 Walls - Dry dash render (colour tbc)
 Base course - Pre-cast stone through coloured buff
 Lintels, Cills etc - Pre-cast stone through coloured buff
 Windows & doors - White uPvc

Notes

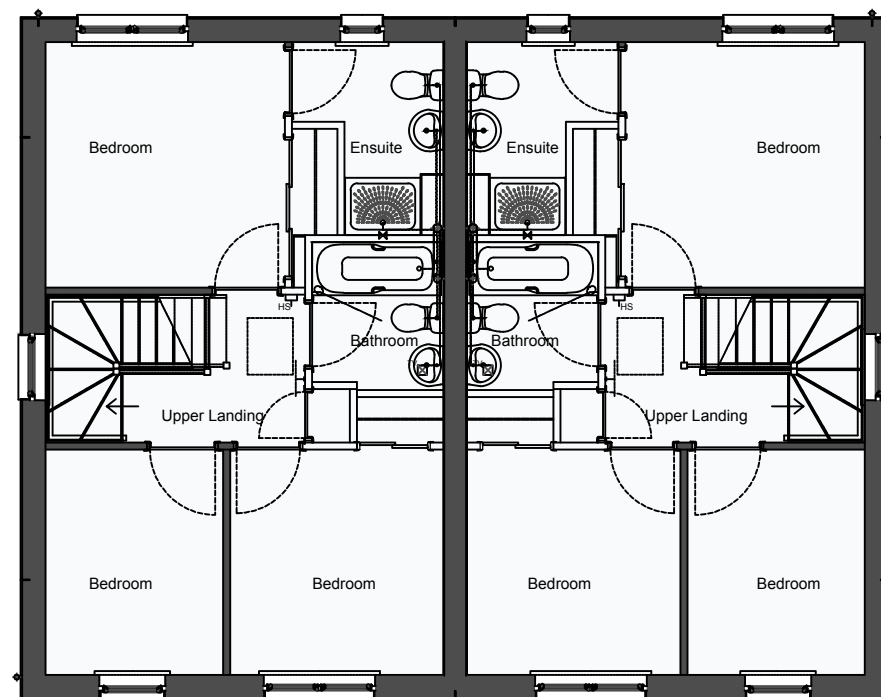
Stone lintels to rear and gable elevations on a plot specific basis only.
 In all circumstances refer to site finishes schedule



Gable Elevation



Ground Floor Plan



Upper Floor Plan

Tulloch Homes

Bracewell Stirling CONSULTING

38 WALKER TERRACE, TILlicOUNTRY, FK13 6EF
 TEL: 01259 750301 FAX: 01259 752365
 5 NESS BANK, INVERNESS, IV2 4SF
 TEL: 01463 233760 FAX: 01463 233785

NESS ROAD HOUSING DEVELOPMENT
 PHASE D, FORTROSE
 TULLOCH HOMES LTD.

TYPE 3SV88 - KINLOCH

VERSION 09 / 2 -

TITLE GENERAL DETAILS

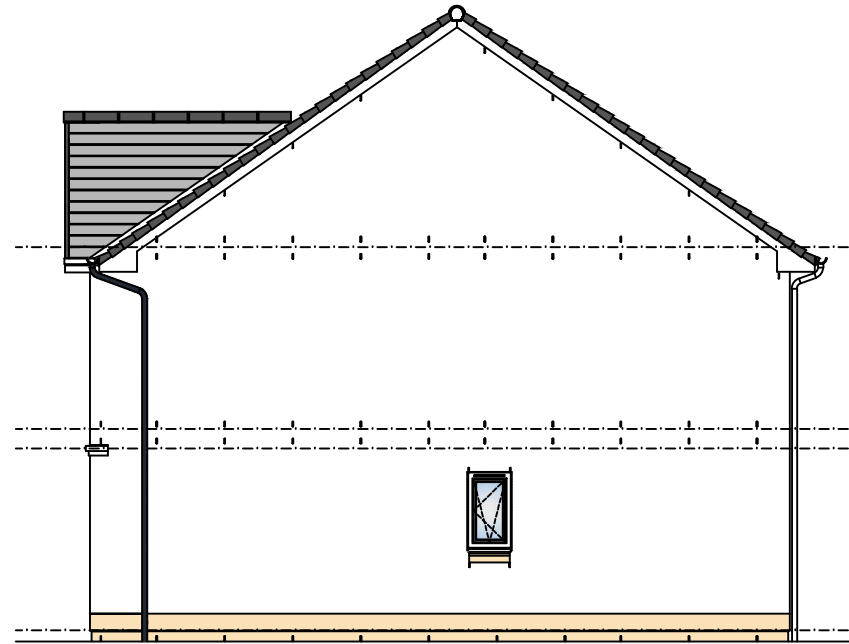
SCALE 1:100 DATE DEC 09 BY KB

DWG SIZE A3

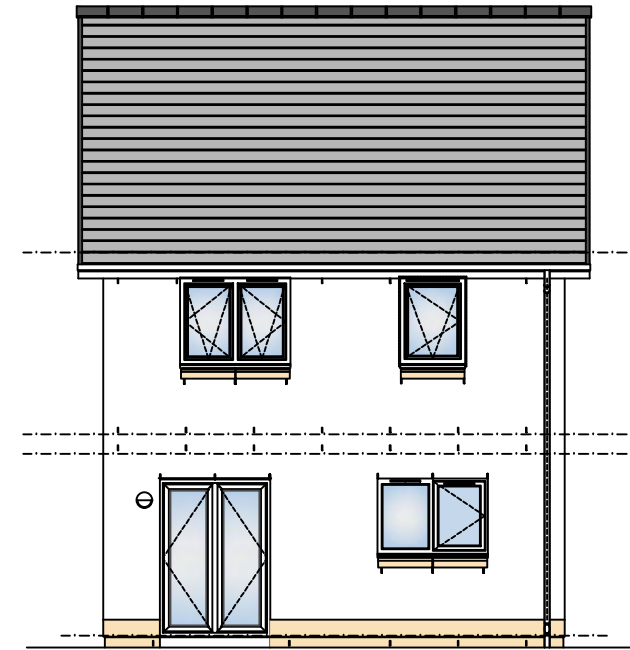
DWG NO 3917 / 3SV88-90 REV 1st



Front Elevation



Gable Elevation



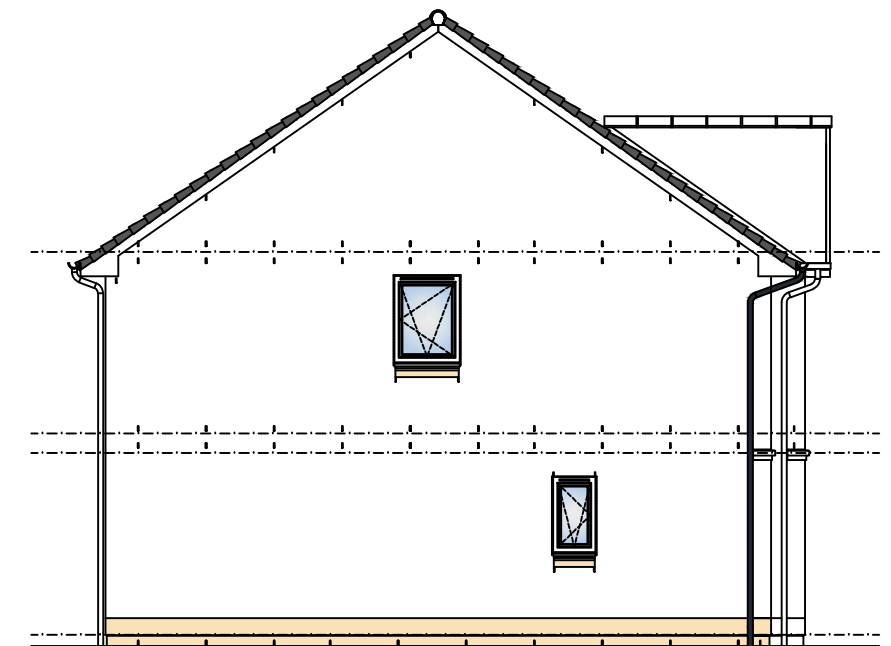
Rear Elevation

General Materials & Finishes

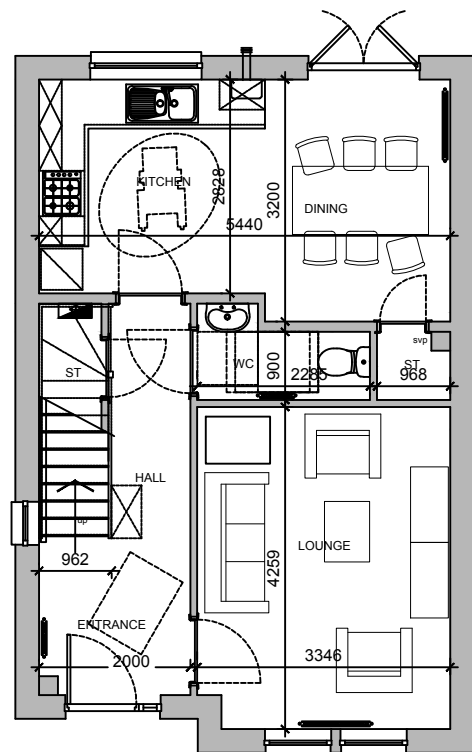
- Roof - Red or Dark grey concrete tile
- Soffits & fascia - White uPvc
- Rainwater goods - Black uPvc
- Walls - Dry dash render (colour tbc)
- Base course - Pre-cast stone through coloured buff
- Lintels, Cills etc - Pre-cast stone through coloured buff
- Windows & doors - White uPvc

Notes

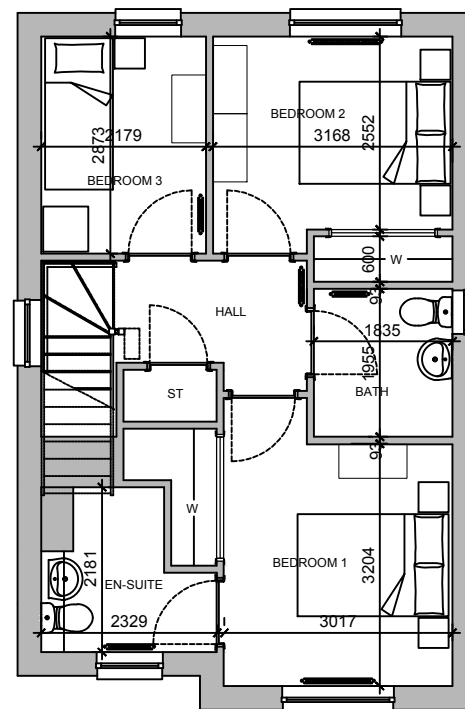
Stone lintels to rear and gable elevations on a plot specific basis only.
In all circumstances refer to site finishes schedule



Gable Elevation



Ground Floor Plan



Upper Floor Plan

Tulloch Homes

Bracewell Stirling CONSULTING

- 38 WALKER TERRACE, TILlicOUNTRY, FK13 6EF ○
- TEL: 01259 750301 FAX: 01259 752365
- 5 NESS BANK, INVERNESS, IV2 4SF ●
- TEL: 01463 233760 FAX: 01463 233785

NESS ROAD HOUSING DEVELOPMENT
PHASE D, FORTROSE
TULLOCH HOMES LTD.

TYPE 3DV 91 - STRATHY

VERSION 09 / 2 -

TITLE GENERAL DETAILS

SCALE 1:100 DATE OCT 12 BY AMcl

DWG NO 3917 / 3DV91-90 REV 1st

