

Beinn Mhor Wind Farm  
Typical Wind Turbine

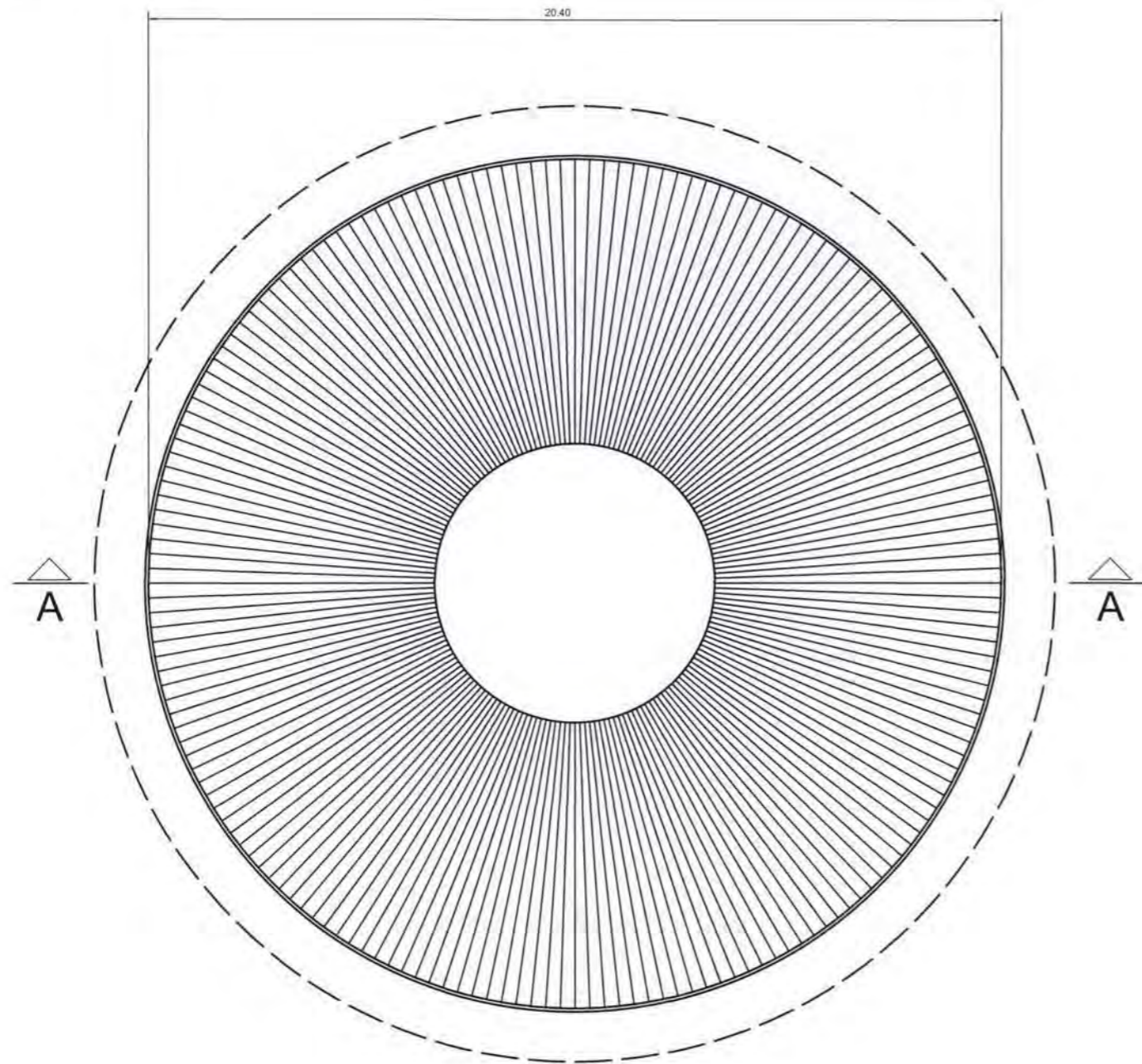
Drawn: Name

Date: 15.01.2013

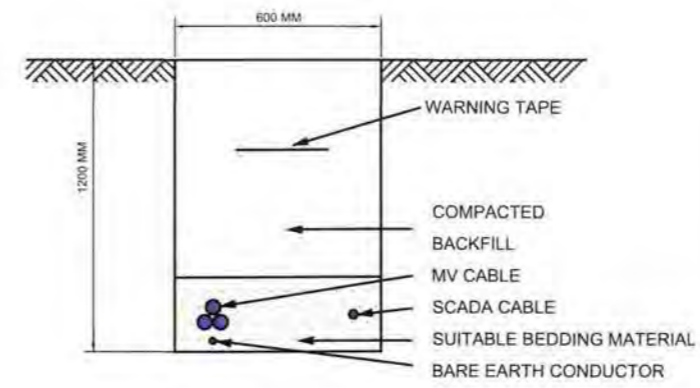
Ref No: S005\_ENV\_ECO\_0015\_D1



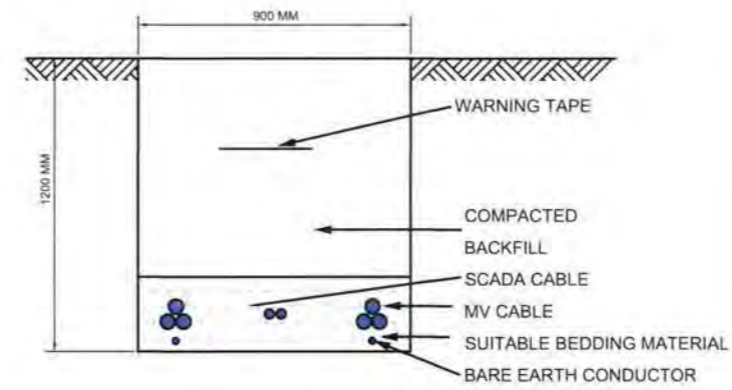
**FOUNDATION TOP VIEW**



**SINGLE CIRCUIT CABLE TRENCH**

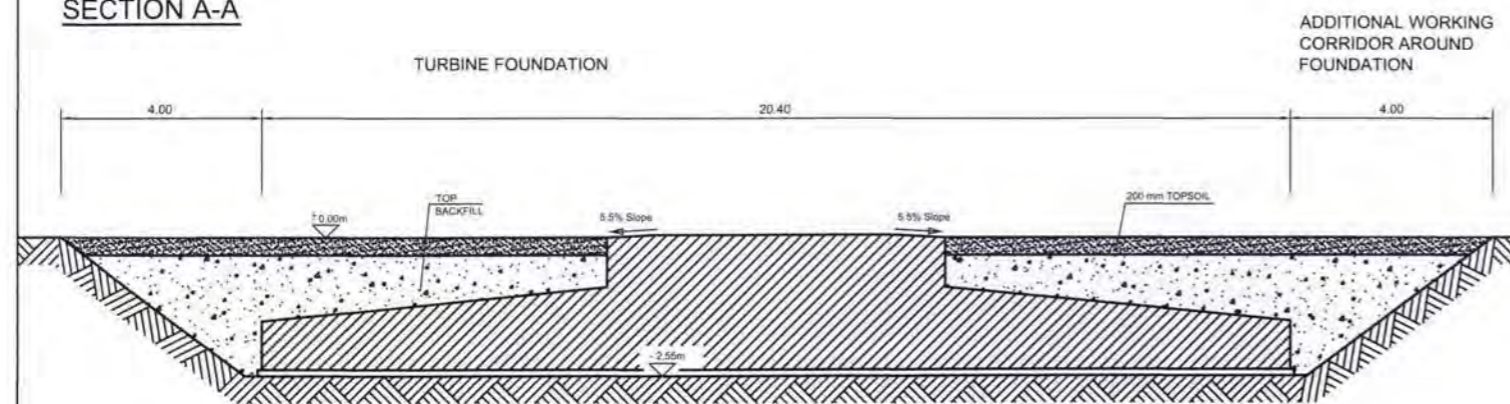


**DOUBLE CIRCUIT CABLE TRENCH**



**Notes:**  
ALL DIMENSIONS ARE IN METERS UNLESS NOTED OTHERWISE

**SECTION A-A**



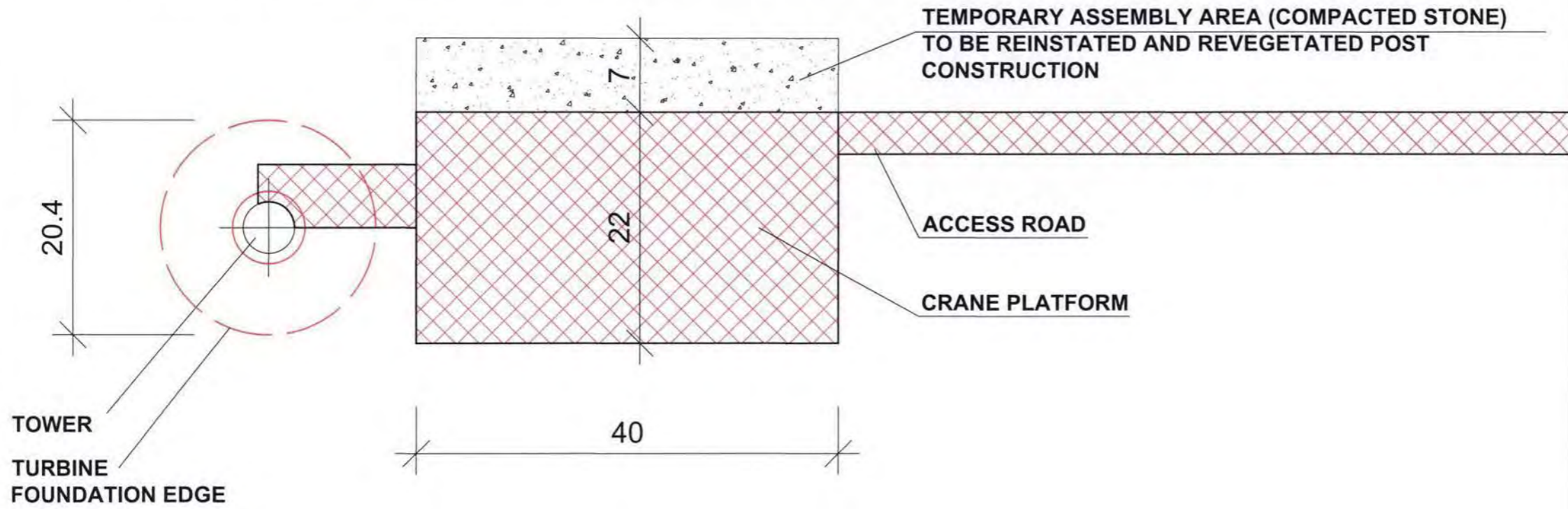
Beinn Mhor Wind Farm  
Typical Wind Turbine Foundation and Cable Trench

Drawn: PeCz  
Date: 15.01.2013  
Ref No: S005\_ENV\_ECO\_0015\_D1

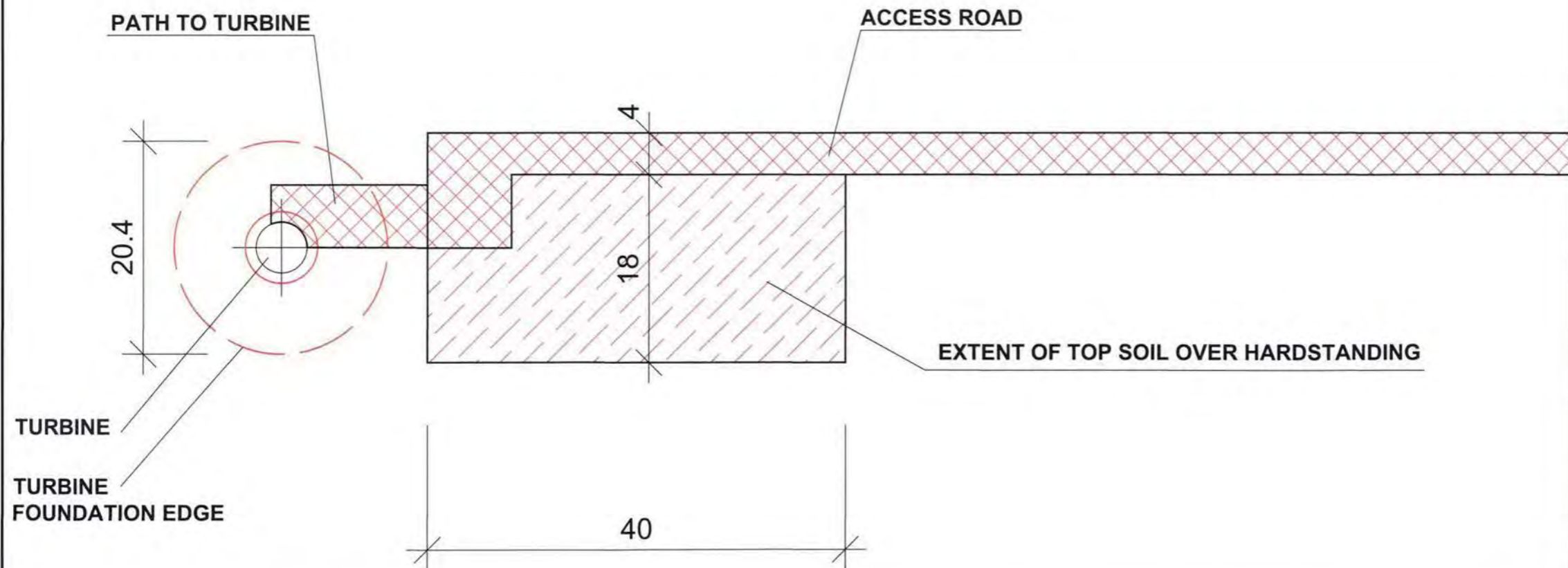


### TYPICAL DETAILS DURING TURBINE CONSTRUCTION

NOTES:  
ALL DIMENSIONS ARE IN METERS UNLESS NOTED OTHERWISE



### TYPICAL POST CONSTRUCTION LAYOUT



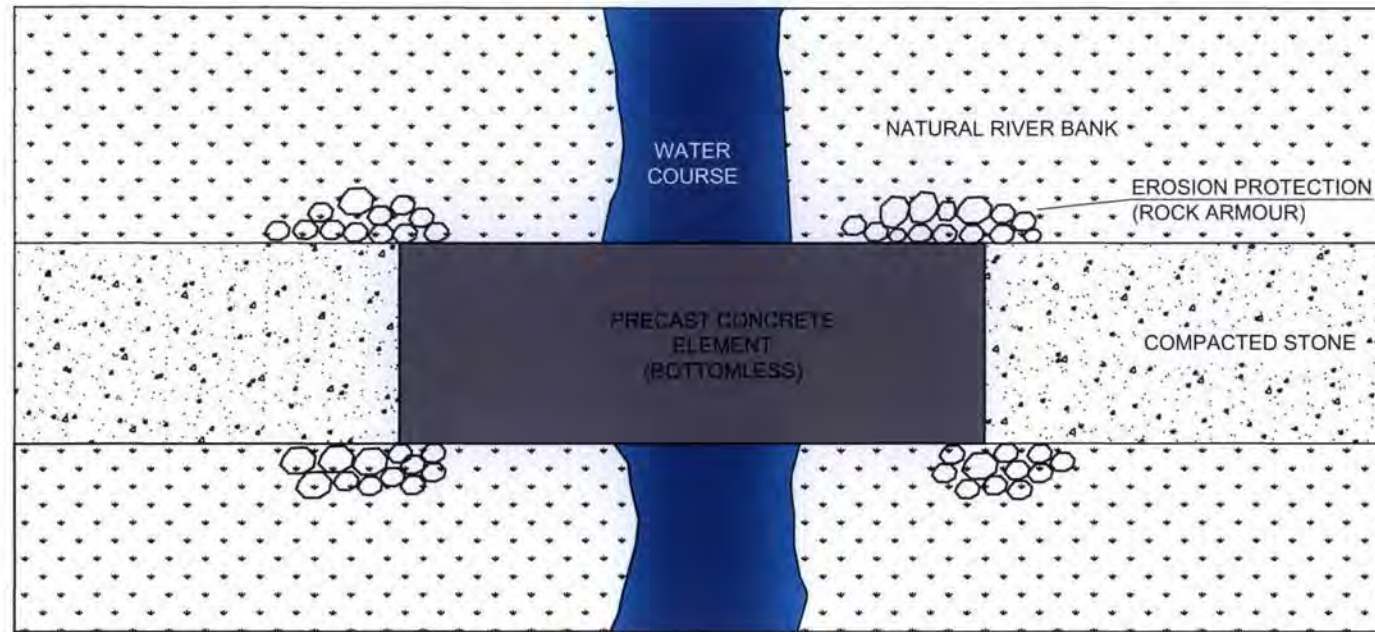
Beinn Mhor Wind Farm  
Typical Crane Hardstanding

Drawn: PeCz

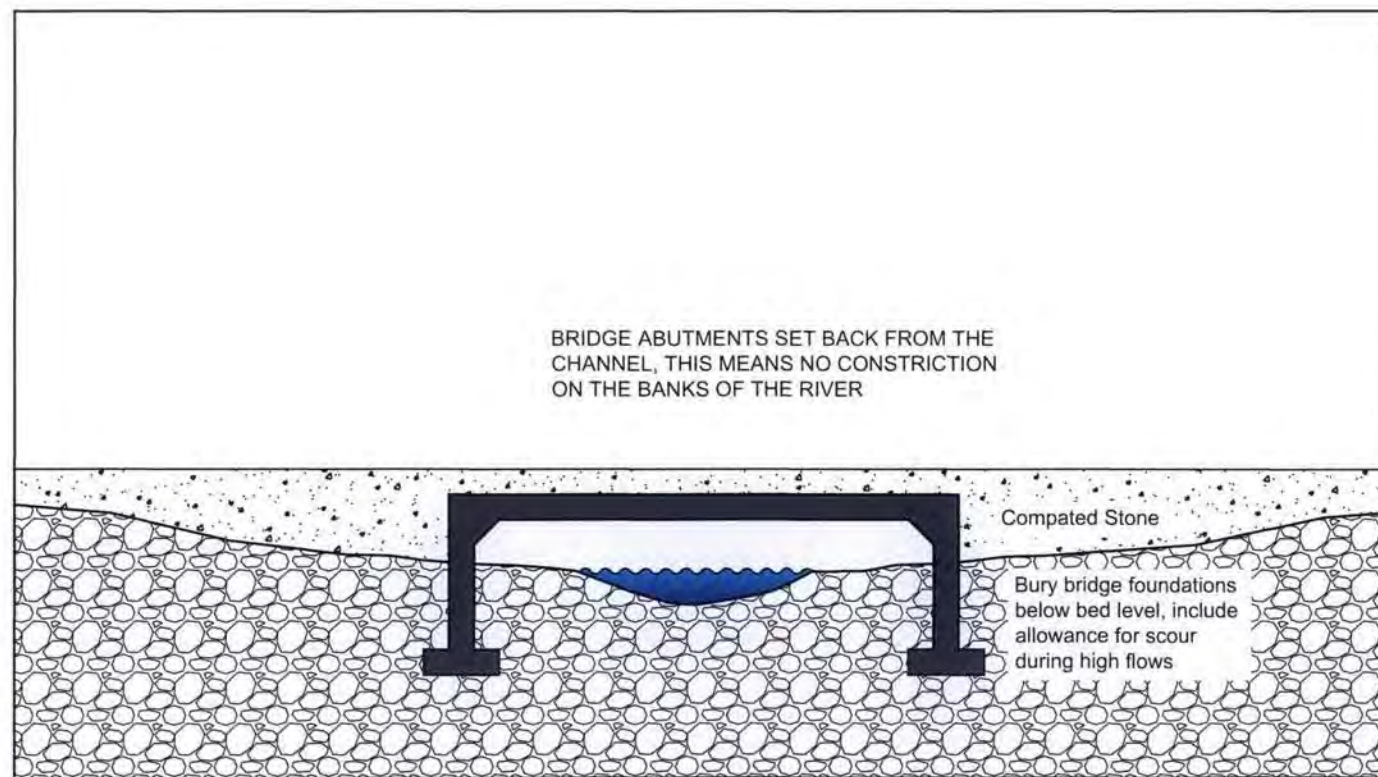
Date: 15.01.2013

Ref No: S005\_ENV\_ECO\_0015\_D1





PLAN VIEW OF WATERCOURSE CROSSING



CROSS SECTION THROUGH WATERCOURSE CROSSING

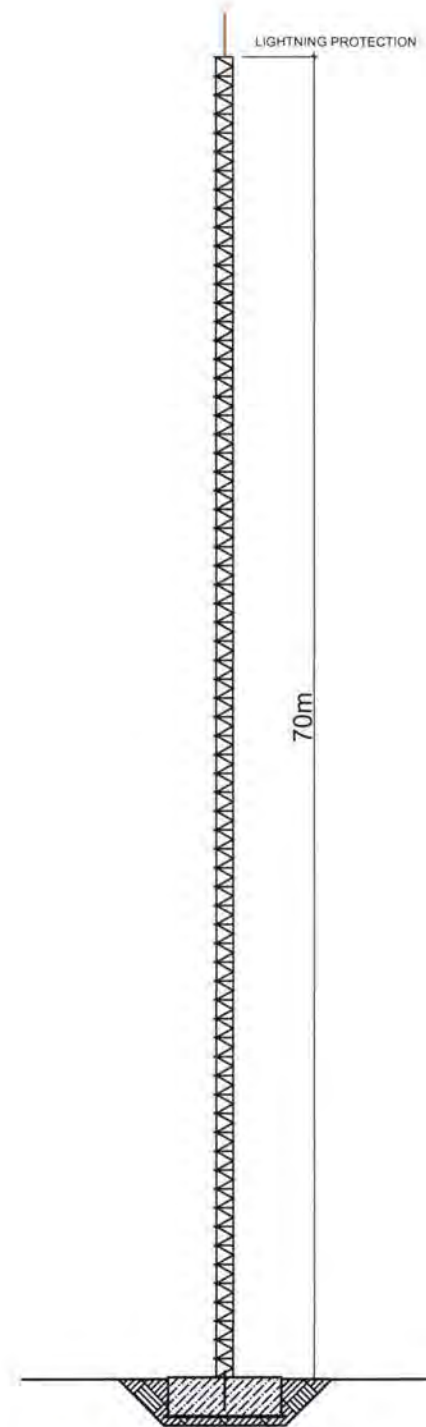
Beinn Mhor Wind Farm  
Typical Watercourse Crossing

Drawn: PeCz

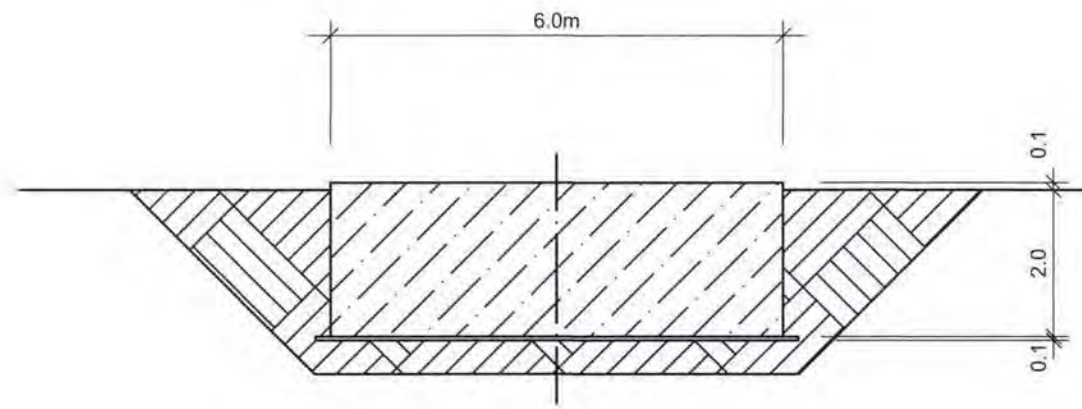
Date: 15.01.2013

Ref No: S005\_ENV\_ECO\_0015\_D1

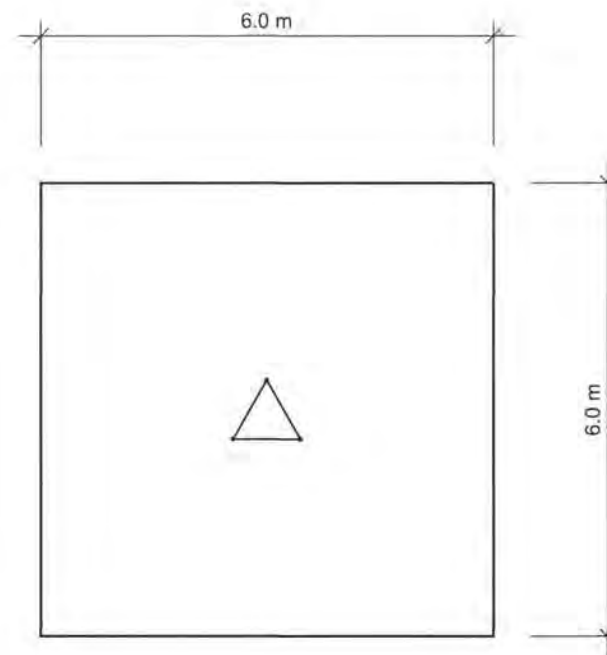




FREESTANDING LATTICE TOWER  
WIND MONITORING MAST



FOUNDATION CROSS SECTION



FOUNDATION PLAN VIEW

Notes:

1. LATTICE MAST EQUIPPED WITH ANTI-CLIMB FENCE
2. LIGHTNING PROTECTION TO MANUFACTURERS SPEZIFICATION
3. POWER SUPPLY VIA PHOTO - VOLTAIC SYSTEM
4. MAST EQUIPPED WITH 3 ANEMOMETERS, 2 WIND VANES, 1 PRESSURE AND SENSOR, LOGGER BOX AND GPRS - ANTENNA

Beinn Mhor Wind Farm  
Typical Permanent Meteorological Mast

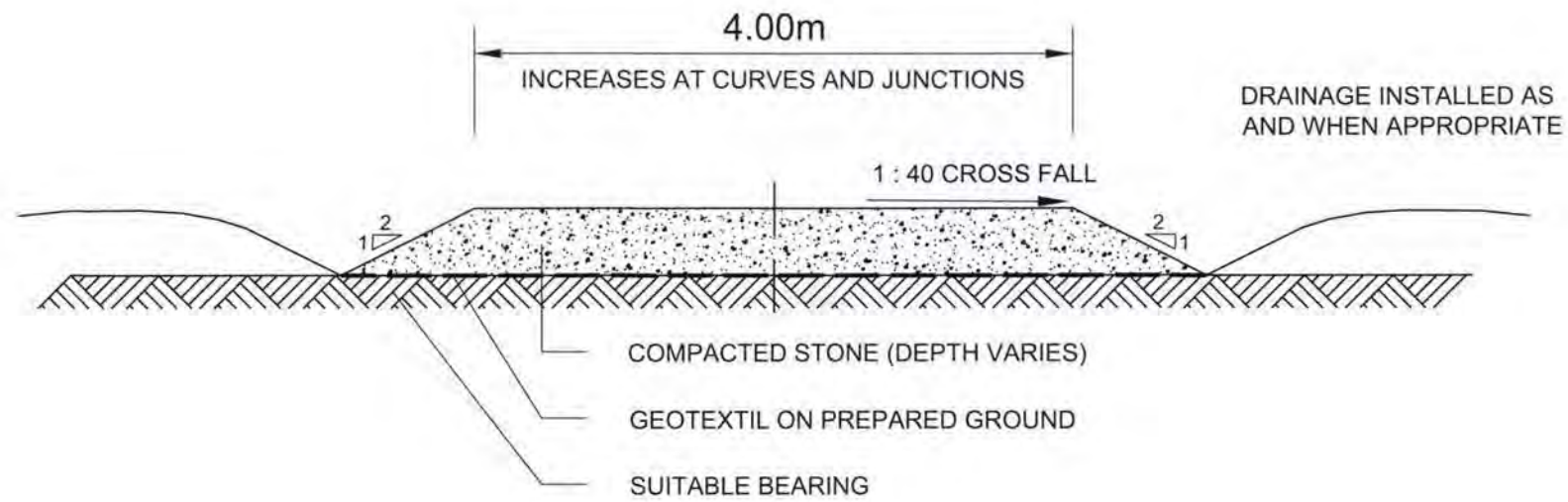
Drawn: PeCz

Date: 15.01.2013

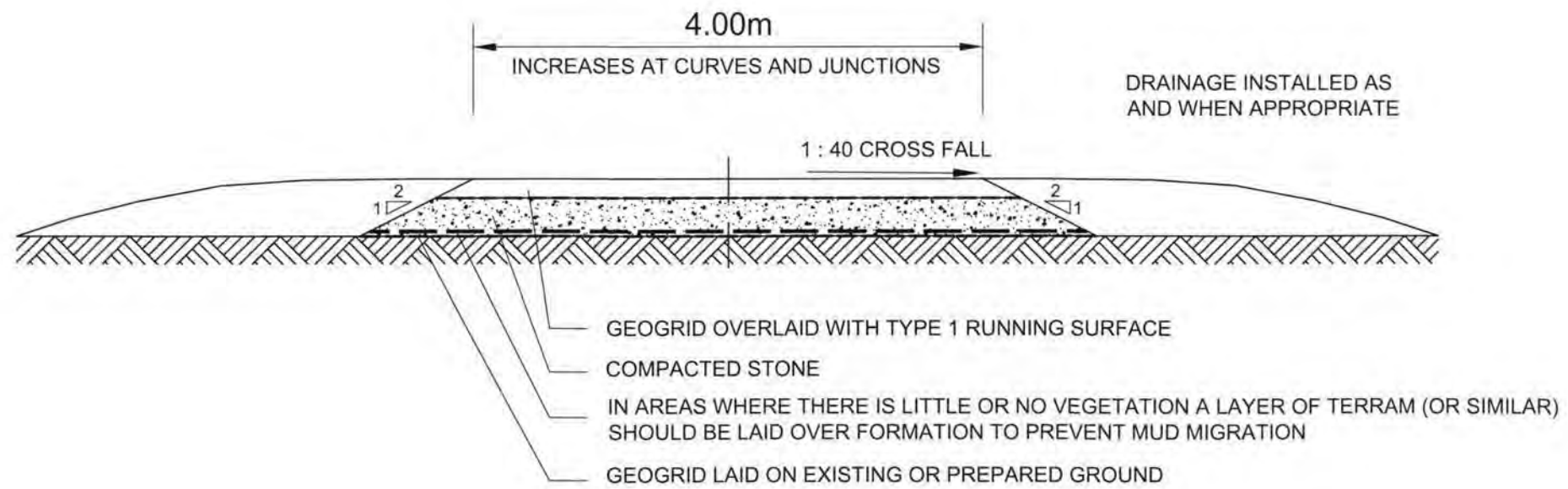
Ref No: S005\_ENV\_ECO\_0015\_D1



PROPOSED CUT ROAD CONSTRUCTION



PROPOSED ROAD CONSTRUCTION OVER LOW BEARING SUBGRADE



NOTES:

ROAD WIDTH AT BENDS WILL INCREASE DEPENDANT ON DELIVERY VEHICLES

ASSUMED ROAD TYPE	TOTAL THICKNESS OF ROAD
CUT TRACK	up to 600 mm
CONSTRUCTION OVER LOW BEARING SUBGRADE	up to 800 mm

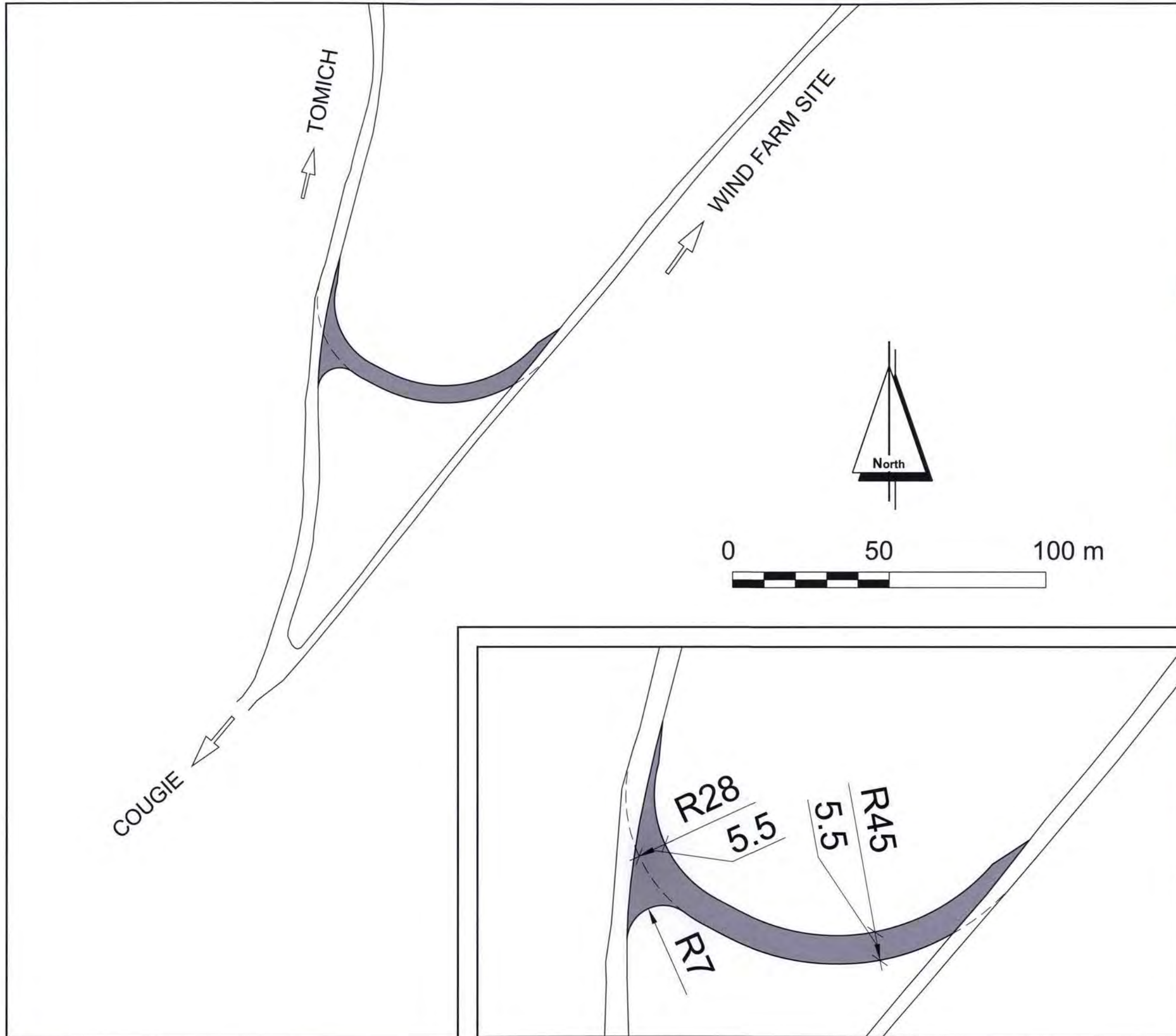
Beinn Mhor Wind Farm  
Typical Access Road Design

Drawn: PeCz



Date: 15.01.2013

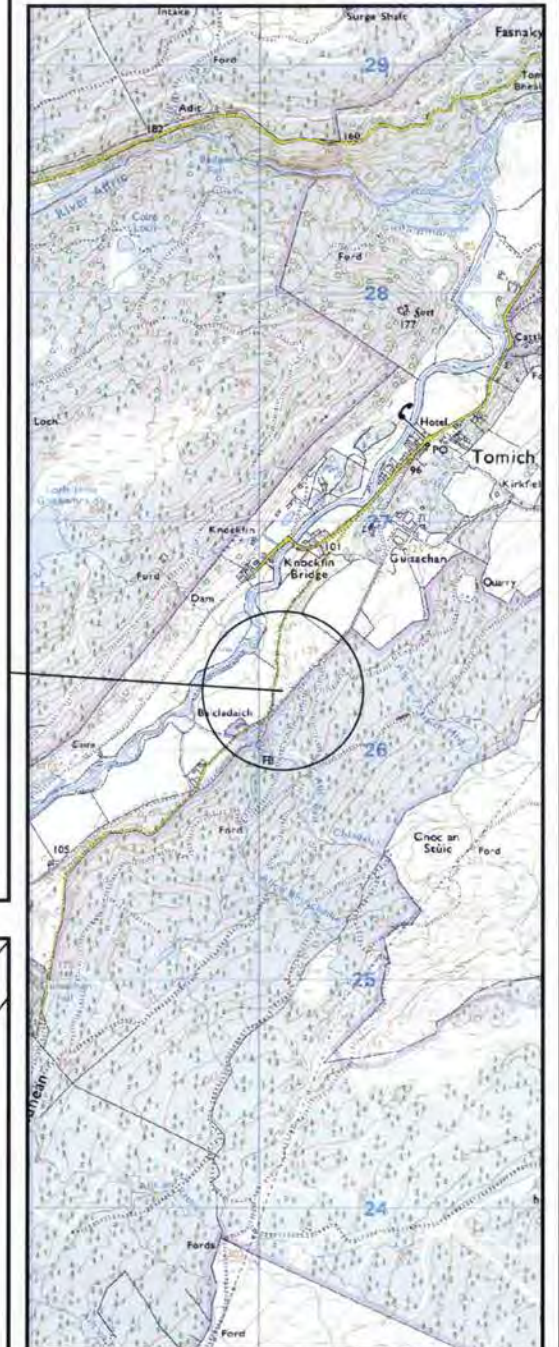
Ref No: S005\_ENV\_ECO\_0015\_D1





**NOTES:**

-  EXISTING ROADS
-  NEW SITE ACCESS

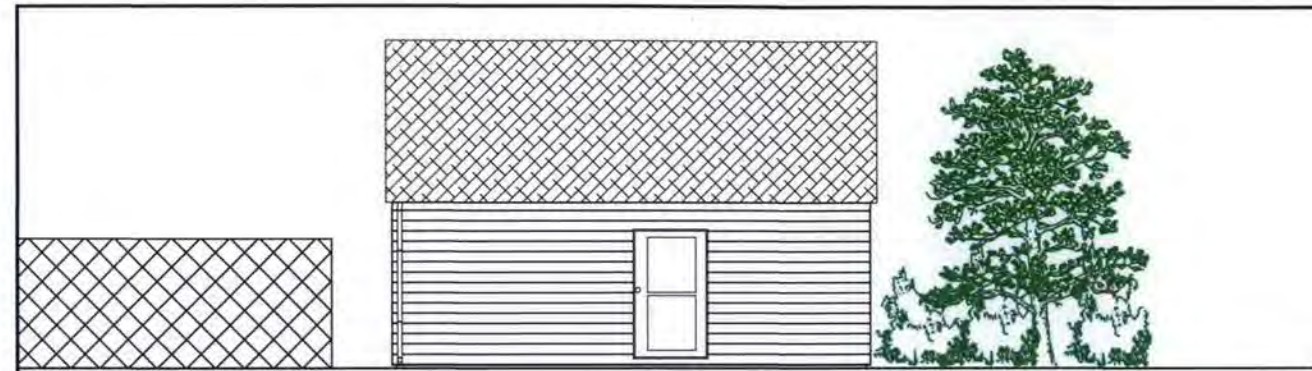


**Beinn Mhor Wind Farm  
Site Access Arrangements**

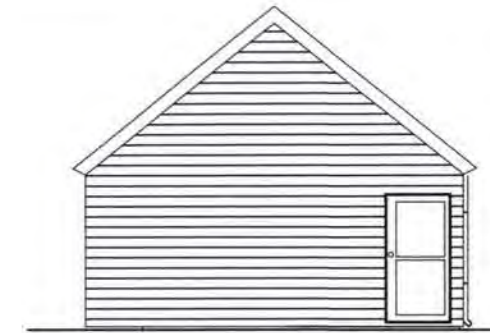
Drawn: PeCz  
Date: 15.01.2013

Ref No: S005\_ENV\_ECO\_0015\_D1

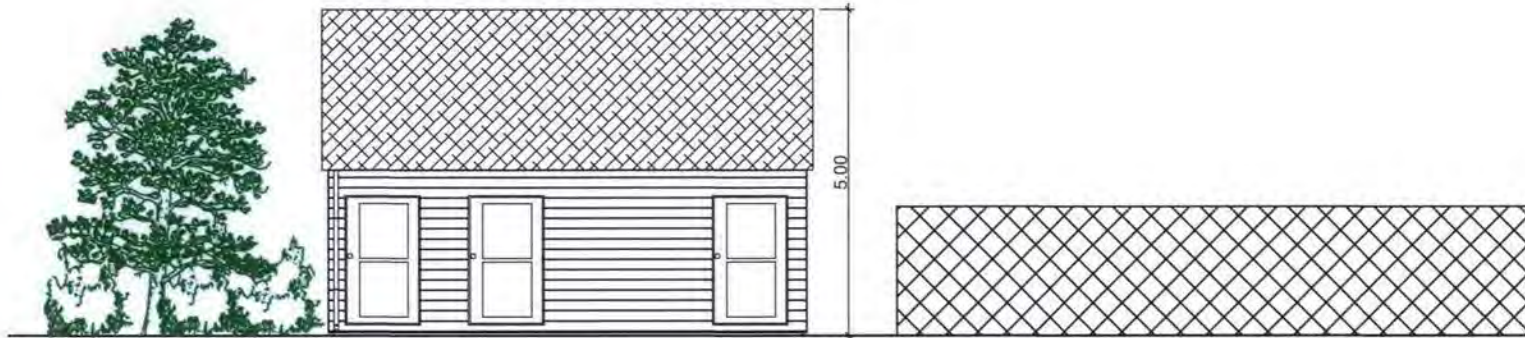




SIDE ELEVATION



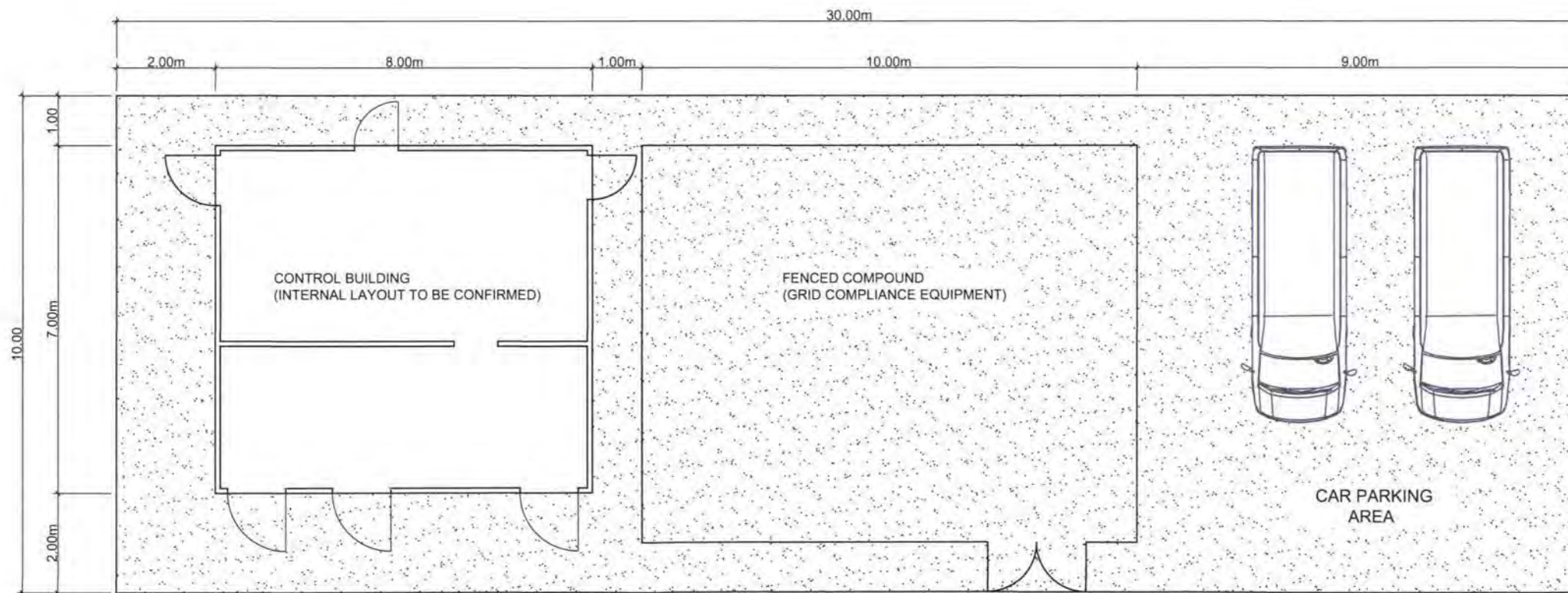
End Elevation



SIDE ELEVATION



End Elevation



NOTE:

1. POSITION OF DOORS, GATES AND INTERNAL WALLS ARE INDICATIVE ONLY. SUBJECT TO REQUIREMENT OF TURBINE SUPPLIER AND GRID COMPANY.
2. LOCAL BUILDING MATERIALS AND FINISHES ARE PROPOSED.
3. SEWAGE DISPOSAL TO BE IN ACCORDANCE WITH RELEVANT AGENCY REQUIREMENTS AND IN ACCORDANCE WITH BUILDING REGULATION.

Beinn Mhor Wind Farm  
On-Site Substation Area and Typical Control Building

Drawn: PeCz

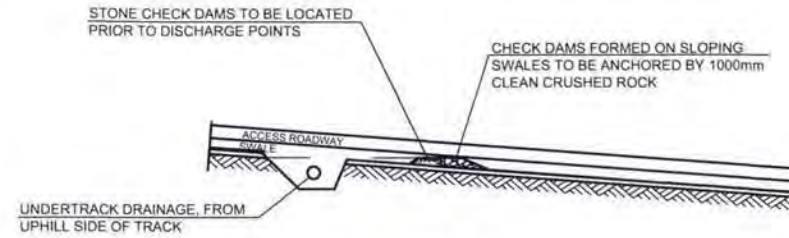
Date: 15.01.2013

Ref No: S005\_ENV\_ECO\_0015\_D1

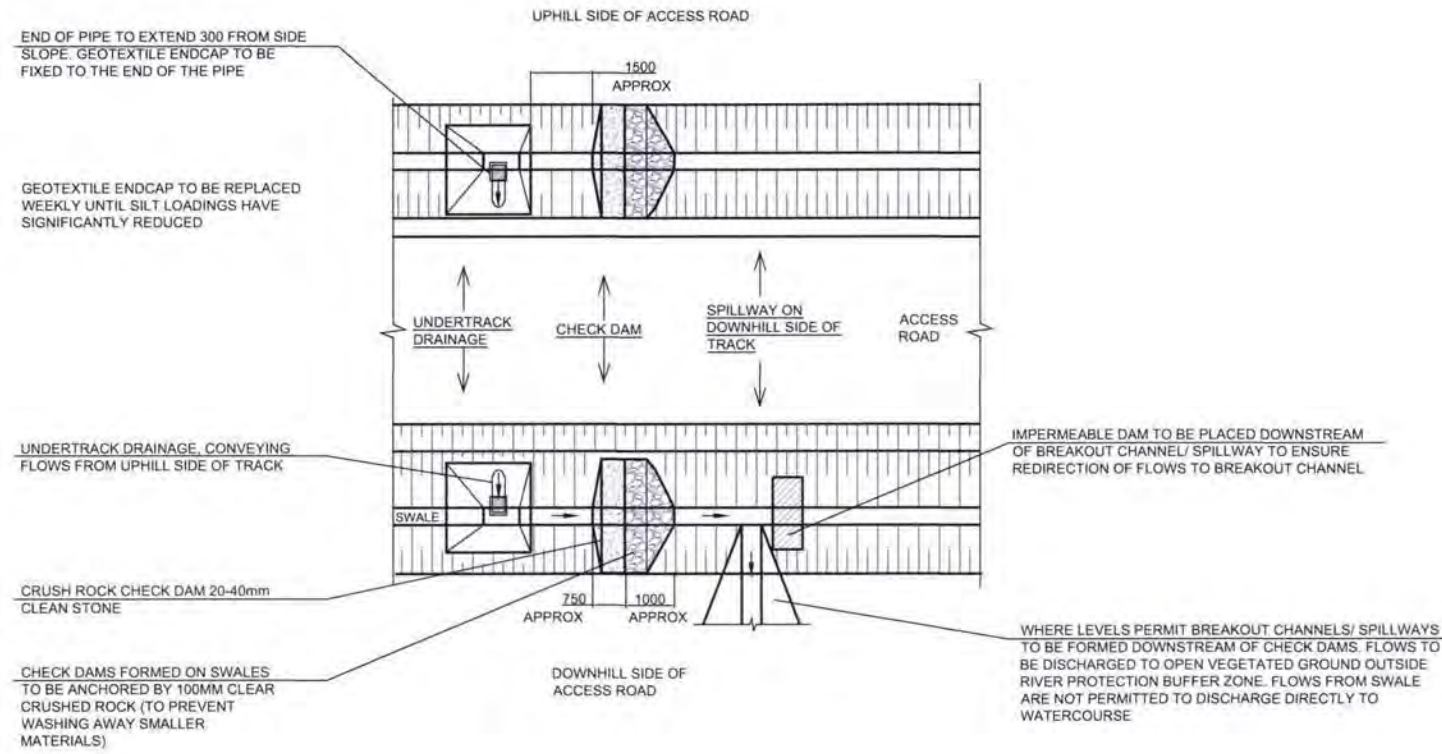




SECTION TYPICAL UNDERTRACK DRAINAGE SUMP ARRANGEMENT ON SLOPE SWALE



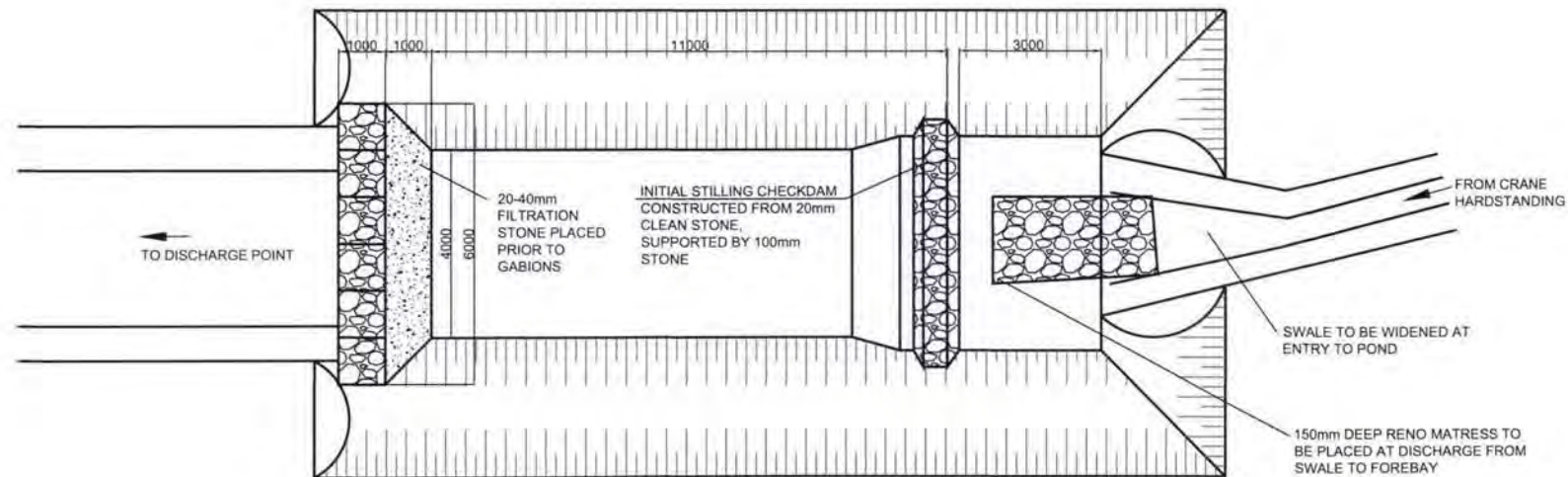
PLAN - TYPICAL UNDERTRACK DRAINAGE SUMP ARRANGEMENT WITH BREAK-OUT CHANNEL (PREFERRED ARRANGEMENT)



NOTES:

ALL DIMENSIONS ARE IN MILLIMETERS UNLESS NOTED OTHERWISE

TYPICAL SETTLEMENT POND DETAIL-PLAN



Beinn Mhor Wind Farm  
Typical Sustainable Drainage System

Drawn: PeCz

Date: 15.01.2013

Ref No: S005\_ENV\_ECO\_0015\_D1

