

Notes
All dimensions should be checked on site.
Do not scale from this drawing.
Any drawing errors or omissions should be brought to the attention of the originator of this drawing.

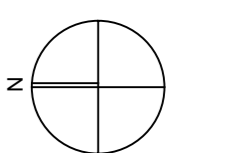
Revision
Rev - 230115: Issued for planning approval.



REFER TO LANDSCAPE ARCHITECTS DRAWINGS AND SPECIFICATIONS FOR FURTHER DETAILS OF LANDSCAPE TREATMENT.

PLANNING

--- INDICATES LINE OF SITE BOUNDARY (6.412 HECTARES)



Reiach and Hall Architects

Wick - The NDA Archive

Proposed Site Plan

4163 (PL) 003

Date : Jan. 2015 Drawn : DJA Scale : 1:500@A0

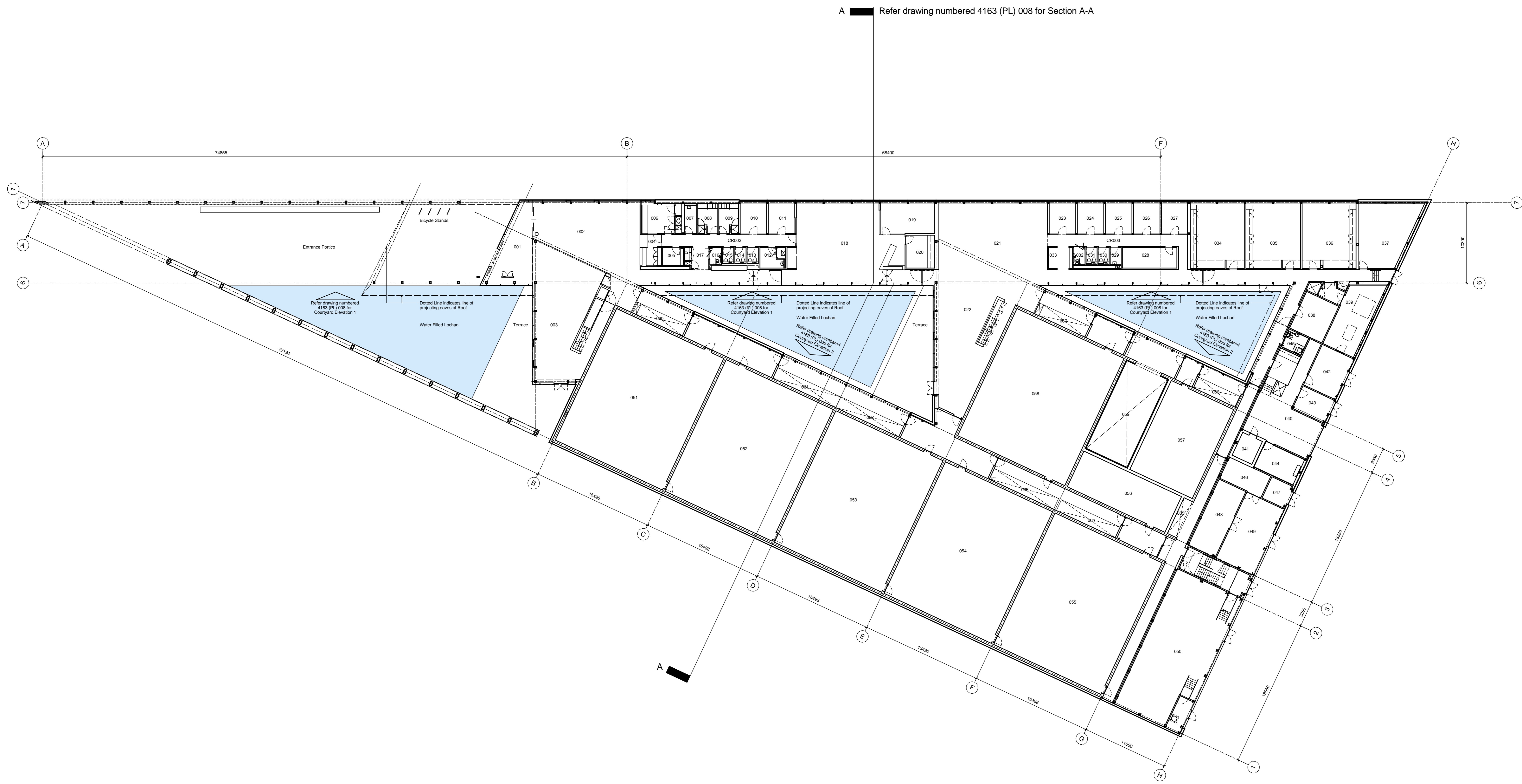
6 Darnaway St
Edinburgh EH3 6BG
Tel : 0131 225 8444
www.riachandhall.co.uk

Notes
 All dimensions should be checked on site.
 Do not scale from this drawing.
 Any drawing errors or divergences should be brought to the attention of the originator of this drawing.

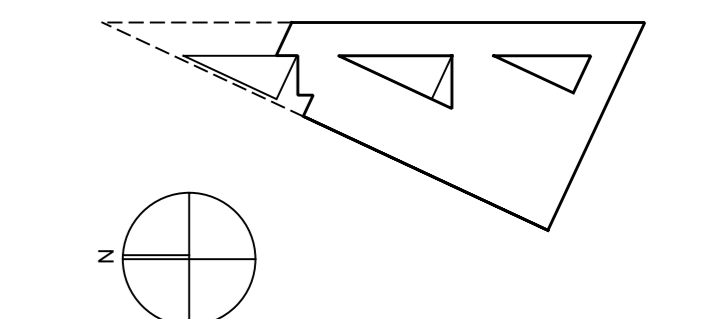
Revision
 Rev - 23/01/15: Issued for planning approval.

Legend

- 001: Entrance Lobby
- 002: Entrance Foyer
- 003: Community Room
- 004: Reception
- 005: Store
- 006: Security Office
- 007: Store
- 008: Shower/Changing Room
- 009: Shower/Changing Room
- 010: Individual Staff Office
- 011: Individual Staff Office
- 012: First Aid Room
- 013: WC
- 014: WC
- 015: WC
- 016: Accessible WC
- 017: Tea Point
- 018: Public Search Room
- 019: Secure Search Room
- 020: Production Room
- 021: General Office
- 022: Staff Area
- 023: Two Person Office
- 024: Individual Office
- 025: Individual Office
- 026: Individual Office
- 027: Individual Office
- 028: Corridor
- 029: WC
- 030: WC
- 031: WC
- 032: Accessible WC
- 033: Photocopy Point
- 034: Accessions Room
- 035: Staff Room
- 036: Conservation Room
- 037: Corridor/IT Room
- 038: General Temporary Store
- 039: Box Machine/Shower Room
- 040: Delivery Bay
- 041: Delivery Store
- 042: Recycled Materials Store
- 043: Release Store
- 044: Quarantine
- 045: Accessible WC/Chamber
- 046: Plant - Transformer Room
- 047: Plant - REC Room
- 048: Plant - Control Board Room
- 049: Plant - Control Panel/Distribution Room
- 050: Plant
- 051: Archive Repository 01
- 052: Archive Repository 02
- 053: Archive Repository 03
- 054: Archive Repository 04
- 055: Archive Repository 05
- 056: Archive Repository 06
- 057: Archive Repository 07
- 058: Archive Repository 08
- 059: Image Viewing Room
- 060 - 067: Plant - Archive Repository Environmental Controls



PLANNING



Reiach and Hall Architects

Wick - The NDA Archive
 Plan
 Level 0

4163 (PL) 004

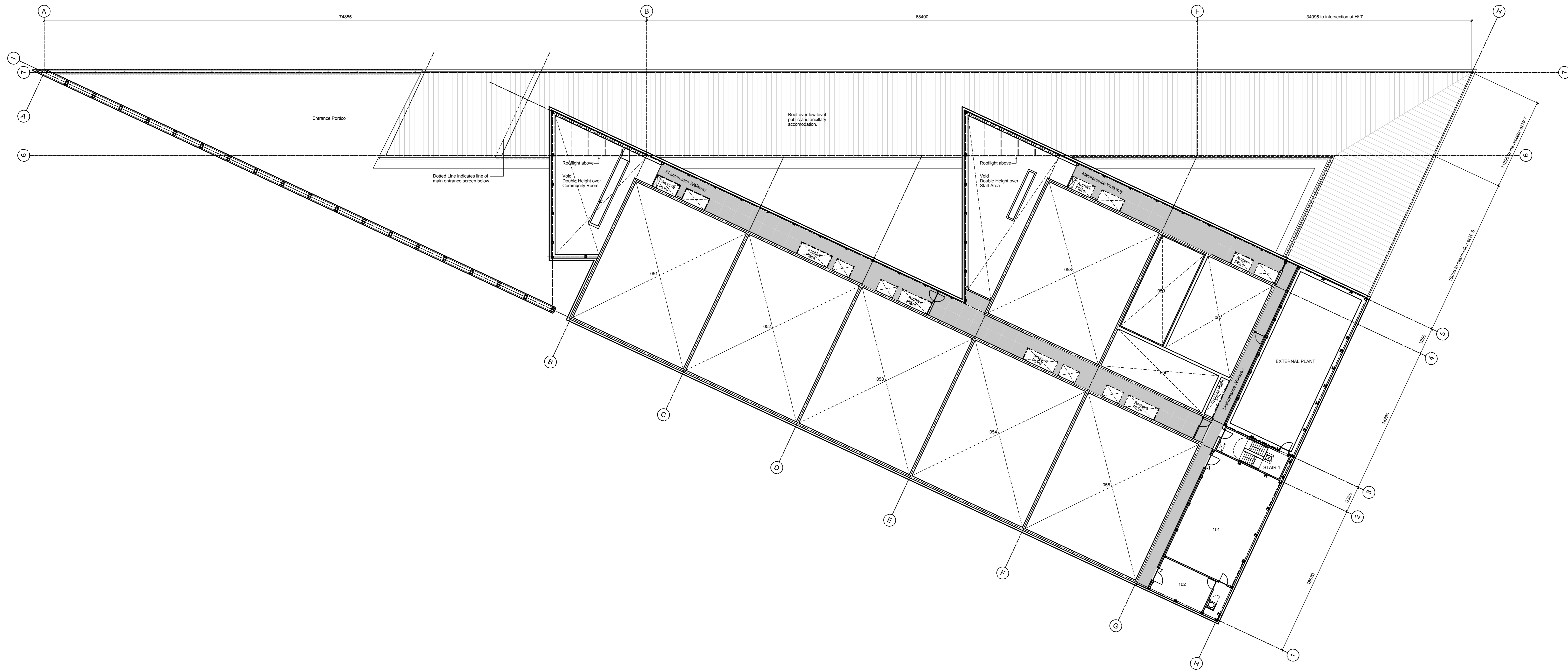
Date: Jan. 2015 Drawn: DJA Scale: 1:200@A0

6 Darnaway St
 Edinburgh EH3 6BG
 Tel: 0131 225 8444
 www.reiachandhall.co.uk

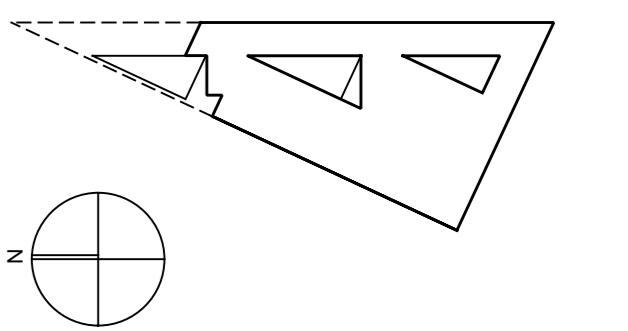
Notes
 All dimensions should be checked on site.
 Do not scale from this drawing.
 Any drawing errors or divergences should be brought to the attention of the originator of this drawing.

Revision
 Rev - 230115: Issued for planning approval.

Legend
 051: Double Height Space to Archive Repository 01
 052: Double Height Space to Archive Repository 02
 053: Double Height Space to Archive Repository 03
 054: Double Height Space to Archive Repository 04
 055: Double Height Space to Archive Repository 05
 056: Double Height Space to Archive Repository 06
 057: Double Height Space to Archive Repository 07
 058: Double Height Space to Archive Repository 08
 059: Double Height Space to Image Viewing Room
 101: Plant
 102: Plant



PLANNING



Reiach and Hall Architects

Wick - The NDA Archive
 Plan
 Level 1

4163 (PL) 005

Date : Jan. 2015 Drawn : DJA Scale : 1:200@A0

6 Darnaway St
 Edinburgh EH3 6BG
 Tel : 0131 225 8444
 www.reiachandhall.co.uk

Notes

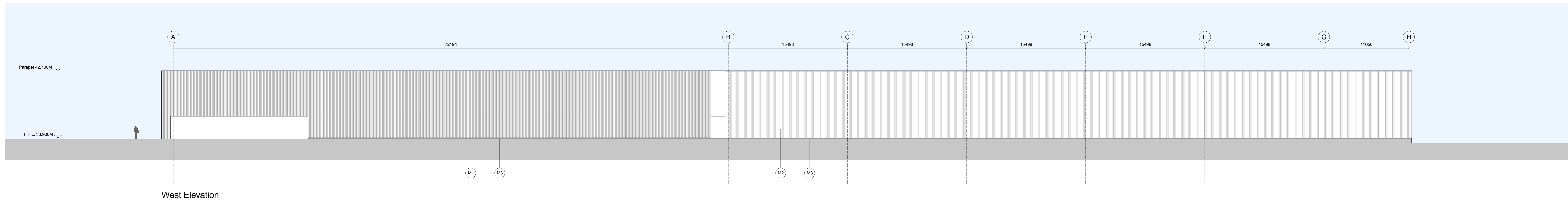
All dimensions should be checked on site.
Do not scale from this drawing.
Any drawing errors or discrepancies should be brought to the attention of the originator of this drawing.

Revision

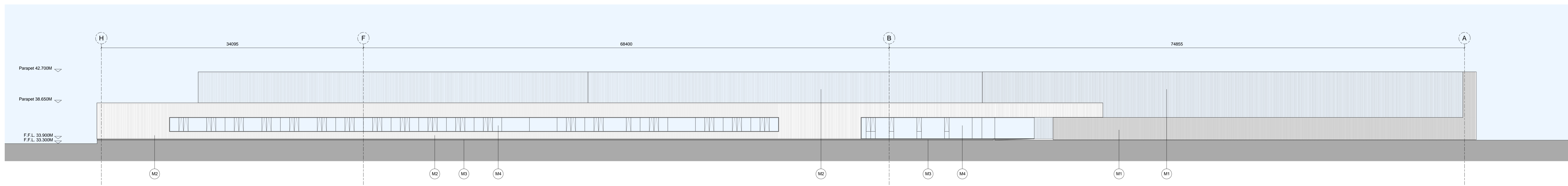
Rev - 23/01/15 Issued for planning approval.

MATERIALS LEGEND:

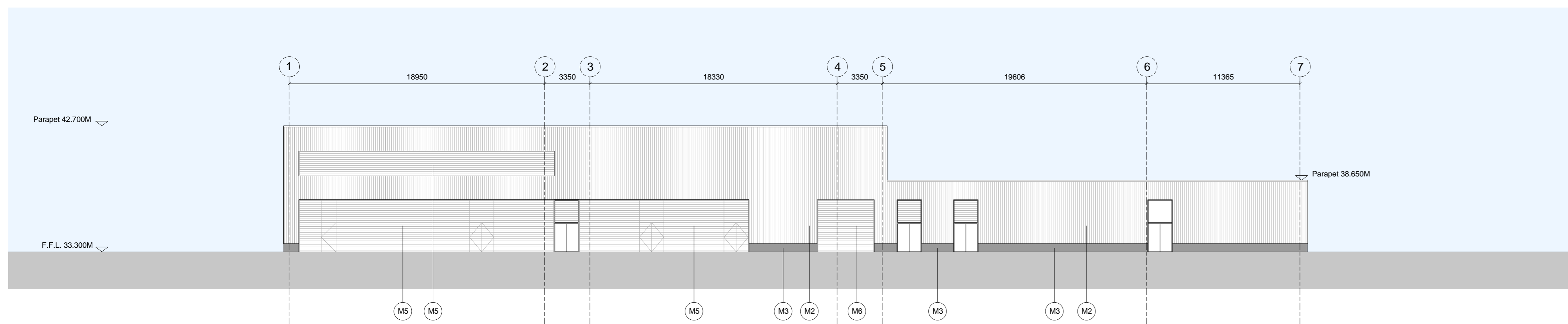
- M1 - SCREEN WALL TO PORTICO FORMED WITH VERTICAL 50x25MM SILVER ANODISED EXTRUDED ALUMINIUM RECTANGULAR HOLLOW SECTIONS AT 100MM CENTRES EITHER SIDE OF PRIMARY STRUCTURE.
- M2 - SECRETLY FIXED SILVER ANODISED EXTRUDED ALUMINIUM CLADDING.
- M3 - ACID ETCHED PRECAST CONCRETE BASE COURSE.
- M4 - SILVER ANODISED ALUMINIUM CURTAIN WALLING SYSTEM.
- M5 - SILVER ANODISED ALUMINIUM PLANTROOM LOUVRE SYSTEM.
- M6 - ROLLER SHUTTER DOOR.
- M7 - SILVER ANODISED ALUMINIUM LOUVRE SYSTEM TO BASE OF CURTAIN WALLING SYSTEM.
- M8 - WATER FILLED COURTYARD.



West Elevation



East Elevation



South Elevation

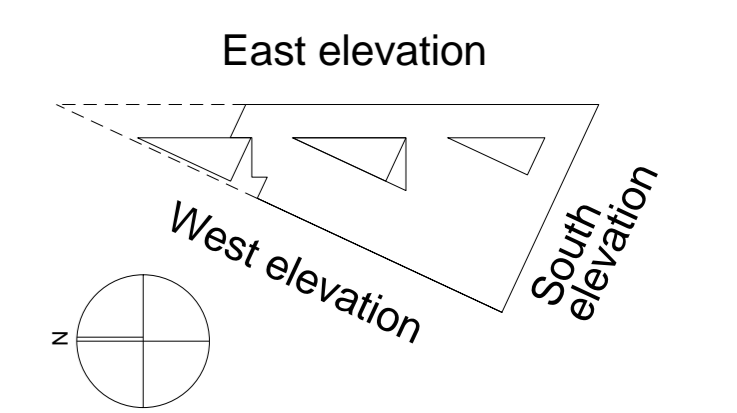


Higashiyama Kai Gallery, Nagano by Yoshio Taniguchi.



Precedent

PLANNING



Reiach and Hall Architects

Wick - The NDA Archive
Elevations
East, West and South Elevation

4163 (PL) 007

Date : Jan. 2015 Drawn : DJA Scale : 1:200@A0

6 Darnaway St
Edinburgh EH3 6BG
Tel : 0131 225 8444
www.riachandhall.co.uk

Notes

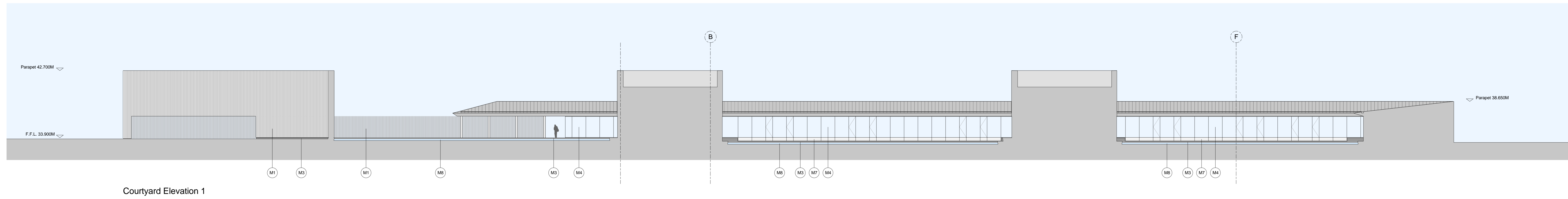
All dimensions should be checked on site.
Do not scale from this drawing.
Any drawing errors or discrepancies should be brought to the attention of the originator of this drawing.

Revision

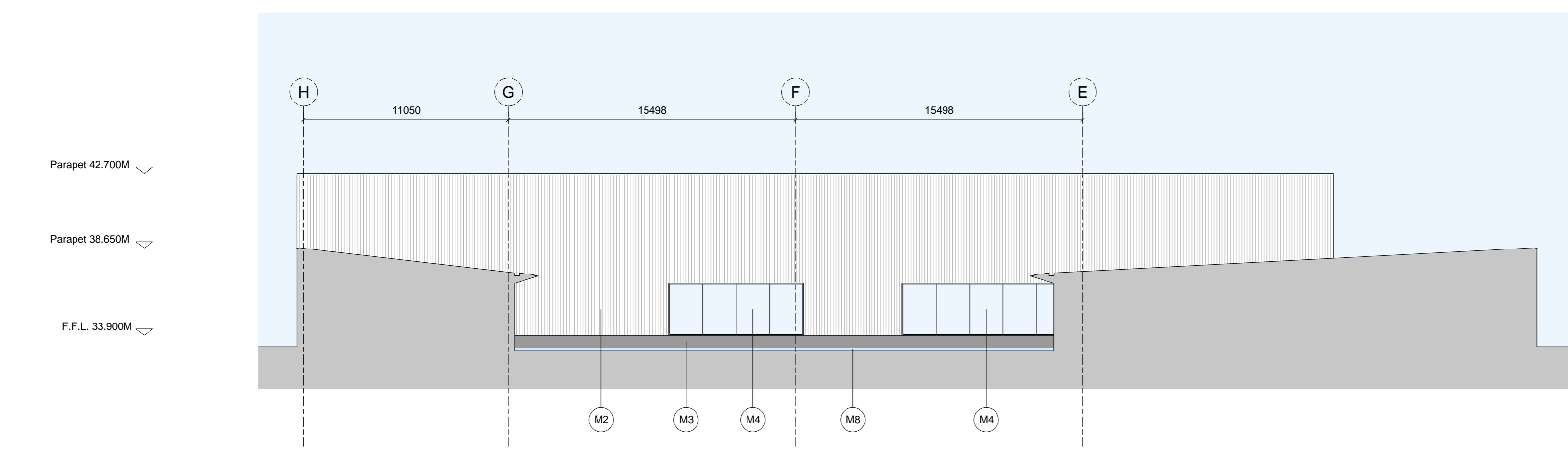
Rev - 23/01/15 Issued for planning approval.

MATERIALS LEGEND:

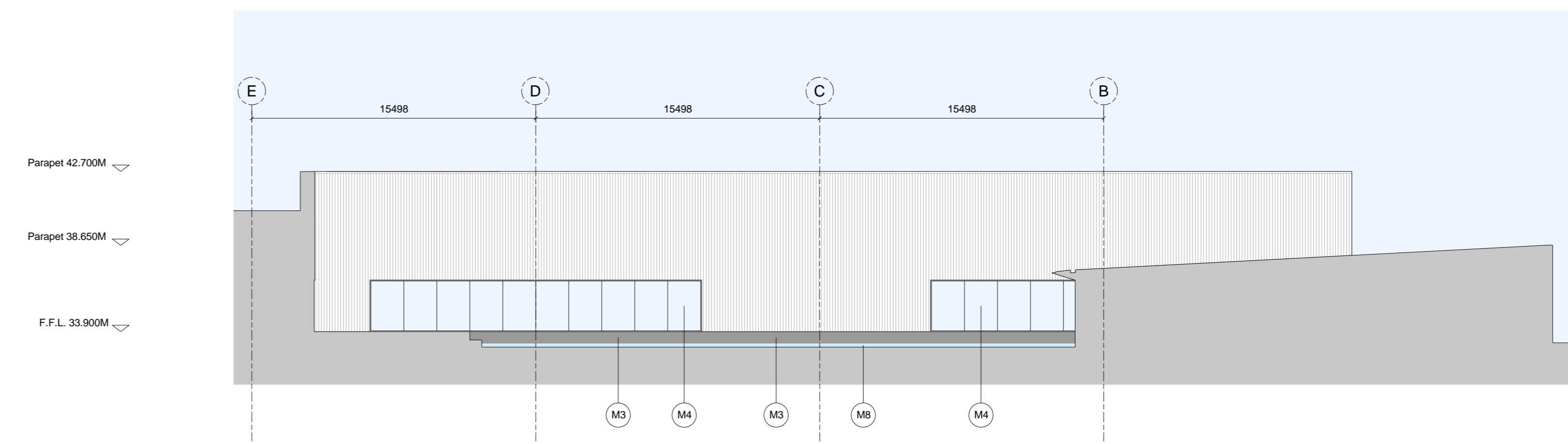
- M1 - SCREEN WALL TO PORTICO FORMED WITH VERTICAL 50x25MM SILVER ANODISED EXTRUDED ALUMINIUM RECTANGULAR HOLLOW SECTIONS AT 100MM CENTRES EITHER SIDE OF PRIMARY STRUCTURE.
- M2 - SECRETLY FIXED SILVER ANODISED EXTRUDED ALUMINIUM CLADDING.
- M3 - ACID ETCHED PRECAST CONCRETE BASE COURSE.
- M4 - SILVER ANODISED ALUMINIUM CURTAIN WALLING SYSTEM.
- M5 - SILVER ANODISED ALUMINIUM PLANTROOM LOUVRE SYSTEM.
- M6 - ROLLER SHUTTER DOOR.
- M7 - SILVER ANODISED ALUMINIUM LOUVRE SYSTEM TO BASE OF CURTAIN WALLING SYSTEM.
- M8 - WATER FILLED COURTYARD.



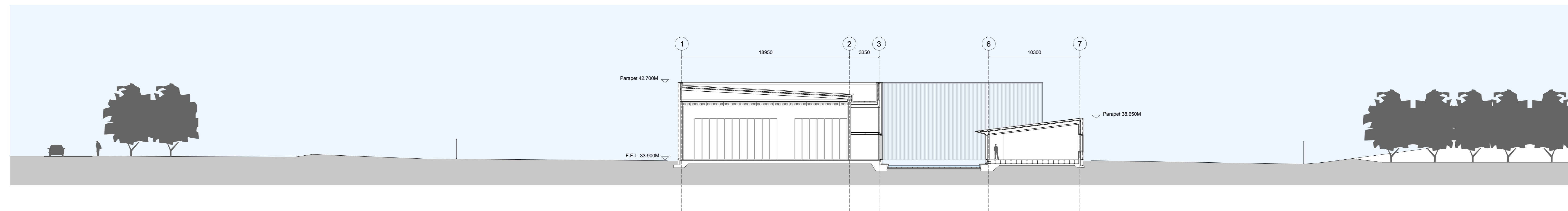
Courtyard Elevation 1



Courtyard Elevation 2



Courtyard Elevation 3



Cranked Section A-A

PLANNING

Reiach and Hall Architects

Wick - The NDA Archive
Elevations
East, West and South Elevation

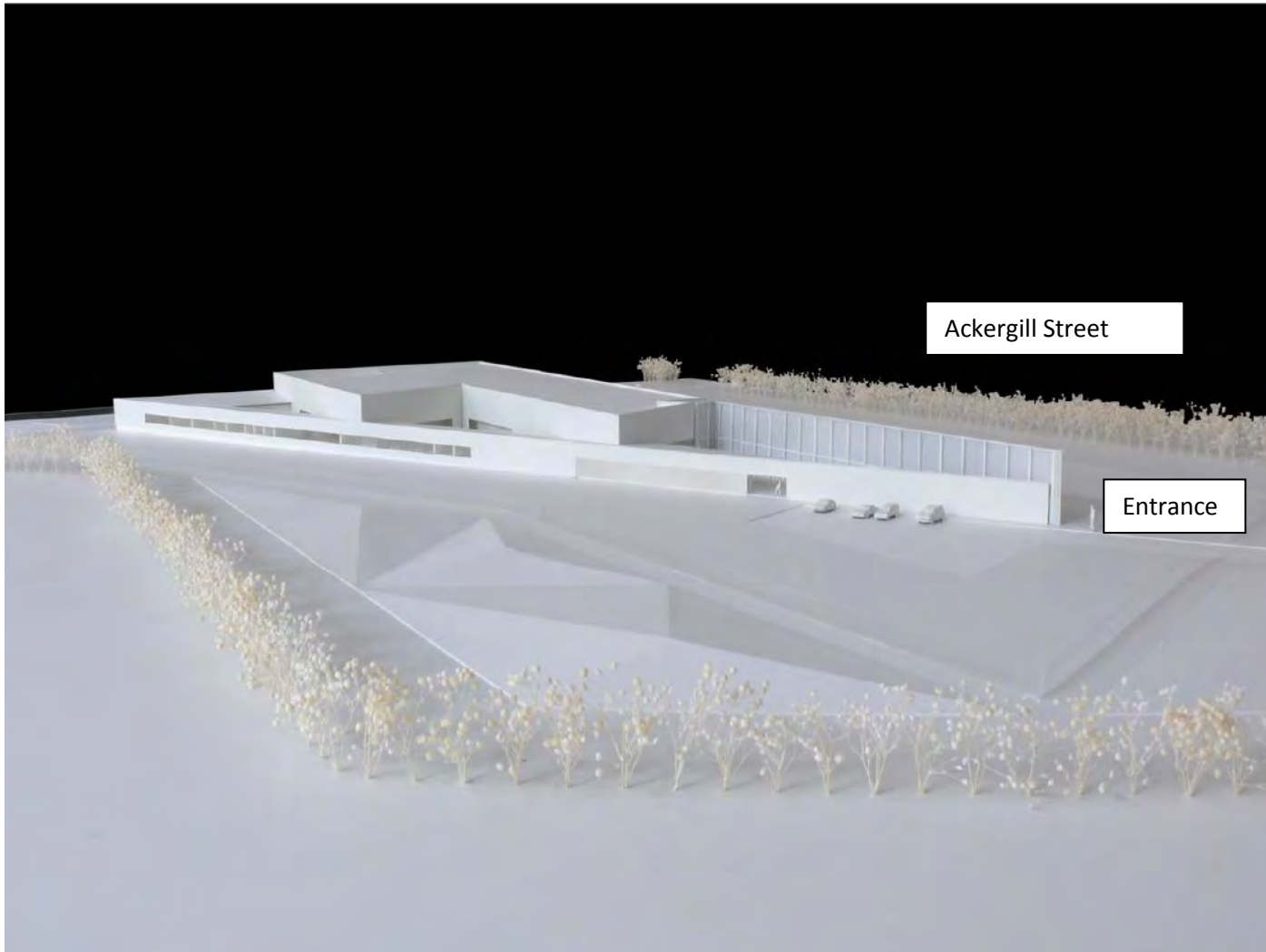
4163 (PL) 008

Date : Jan. 2015 Drawn : DJA Scale : 1:200@A0

6 Darnaway St
Edinburgh EH3 6BG Tel : 0131 225 8444
www.reiachandhall.co.uk



View 1: Entrance (looking south)



View 2: Indicative model of development (looking to south west)