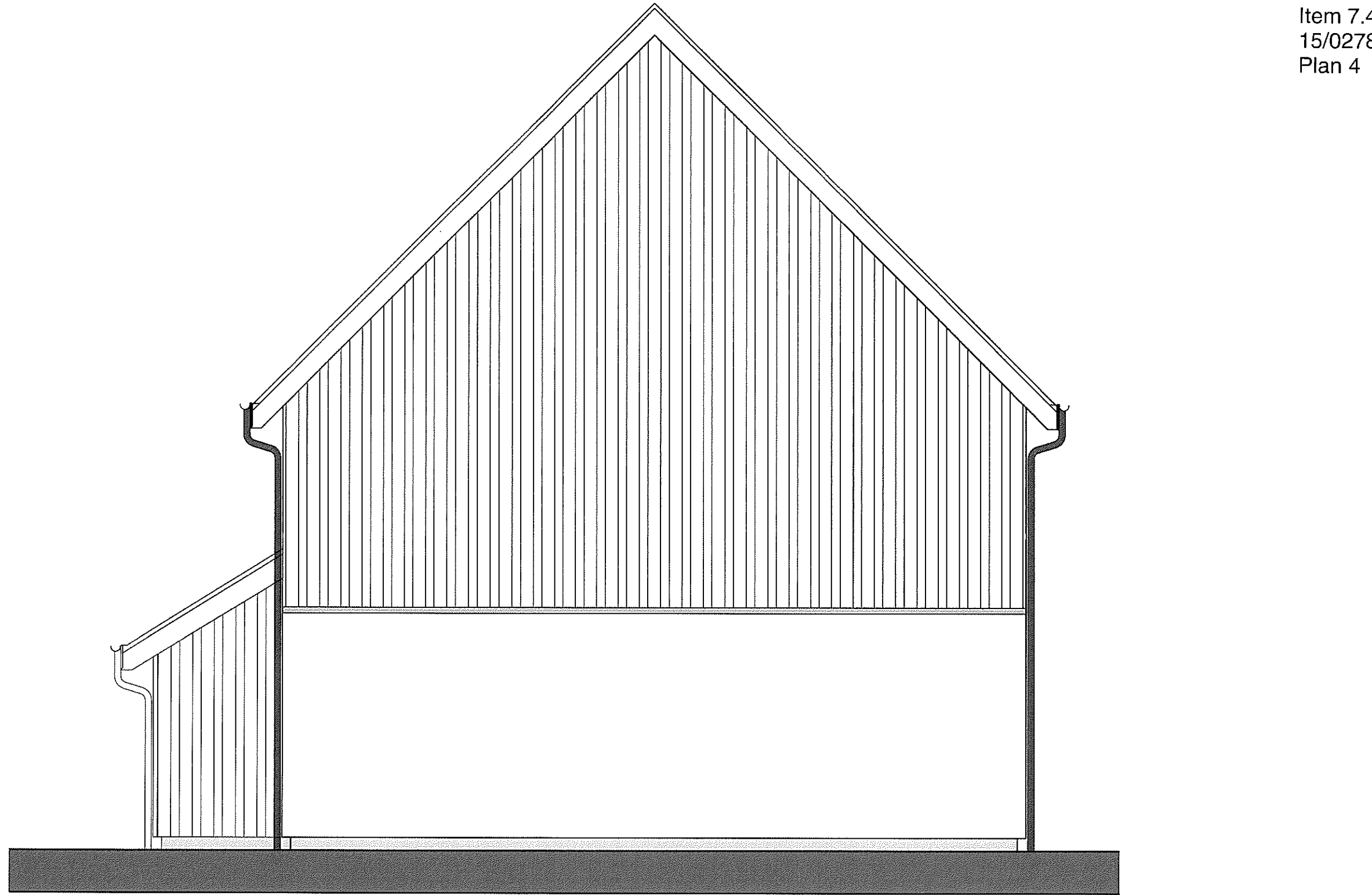


Item 7.4 – PLS/072/15
 15/02787/FUL
 Plan 4



Fourplex Side Elevation

0 1 2 4m
 Scale 1:50

Drawn	CHK'd	Date			
Revision					
Drawn	CHK'd	Date			
Revision					
Drawn	CHK'd	Date			
Revision					
Drawn	CHK'd	Date			
Revision					
Drawn	PH	CHK'd	JJ	Date	21-07-14
Revision					
Drawn	PH	CHK'd	ME	Date	09-07-15

A Issued for Planning - For Phase 2

B Fourplex revised to 1 bedroom flats. To be issued for Phase 3. Not included in Phase 2.

keppie

PERTH
 74 Toy Street,
 Perth,
 PH2 8NP
 Tel: 01733 621 551
 www.keppie-design.co.uk

Client
 Ark Estates

Project
 Balgale Sawmill
 Killarilly, Beaulieu

Drawing
 Elevation
 Fourplex Side

Project No
 212301
 Drawing No
 PL(20)306
 Status
 For Planning

Created
 Date
 PH
 16-07-14
 Checked
 Scale
 JJ
 1:50
 Rev
 B
 A3



Block Elevation - House Types B+B Front



Block Elevation - House Types B+B Rear

Materials Palette:

- Timber framed wall construction
- Vertical timber cladding boards painted white
- Feature coloured horizontal timber cladding boards at entrance
- Natural slate tile roof finish
- uPVC gutters and RWPs
- Roof mounted photovoltaic panels (exact locations TBC dependant upon orientation and final calculations)

Item 7.4 – PLS/072/15
15/02787/FUL
Plan 5

Revision	Drawn	Chk'd	Date		
Revision					
Drawn	Chk'd	Date			
Revision					
Drawn	Chk'd	Date			
Revision					
Drawn	Chk'd	Date			
Revision					
A	Issued for Planning - For Phase 2				
Drawn	PH	Chk'd	JJ	Date	21-07-14
Revision					
B	References to Phase 2 removed. Layout will be submitted for phase 1, 2, 3 applications				
Drawn	PH	Chk'd	ME	Date	09-03-15

keppie

PERTH
78 Tay Street
Perth
PH2 8JG
Tel: 01738 651 661
www.keppiedesign.co.uk

Client
Ark Estates

Project
Balgate Sawmill
Kiltarlity, Beauly

Drawing
Elevations
Typical Semi Detached Block

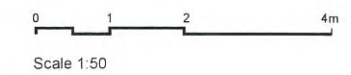
Project No
212301

Drawing No
PL(20)309

Status
PLANNING

Created
17-07-14

Date
17-07-14

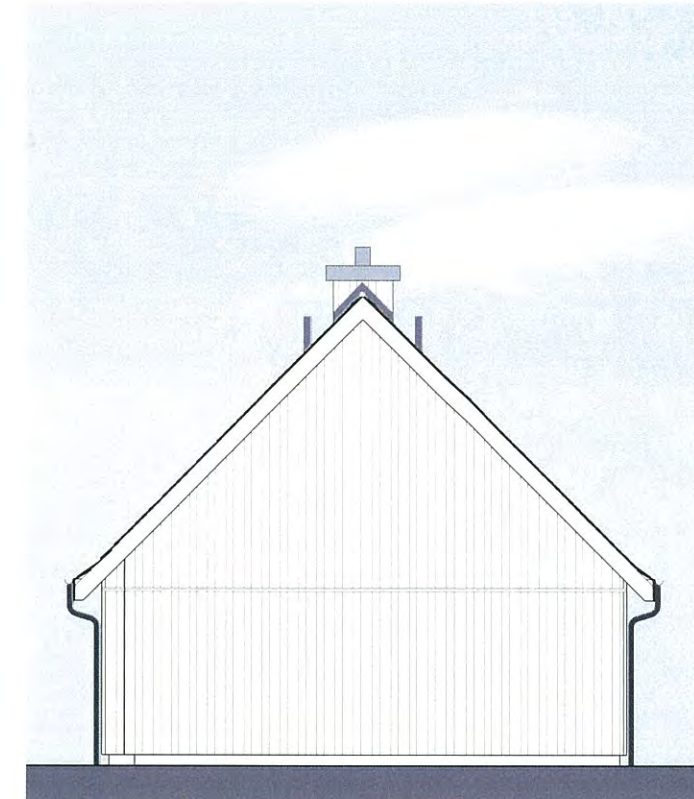




House Type B Front Elevation



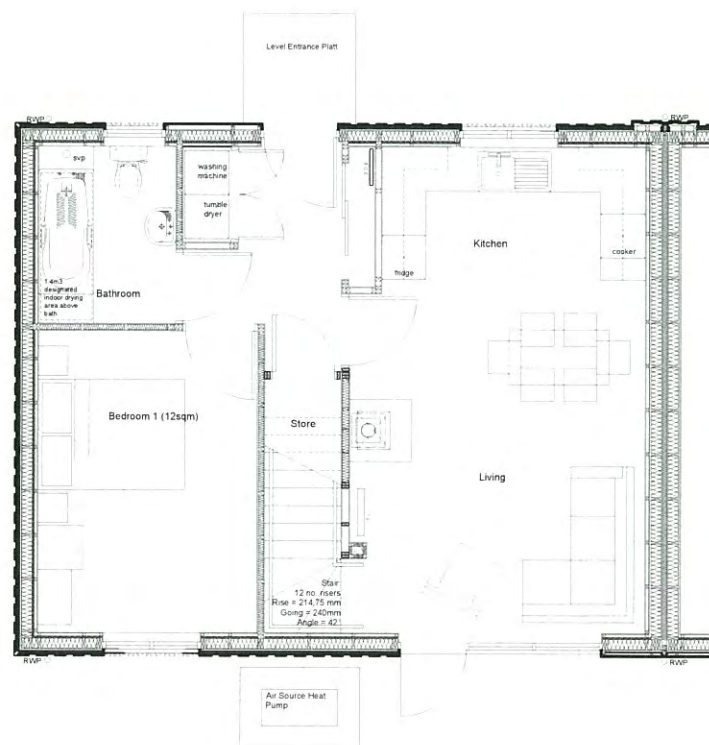
House Type B Rear Elevation



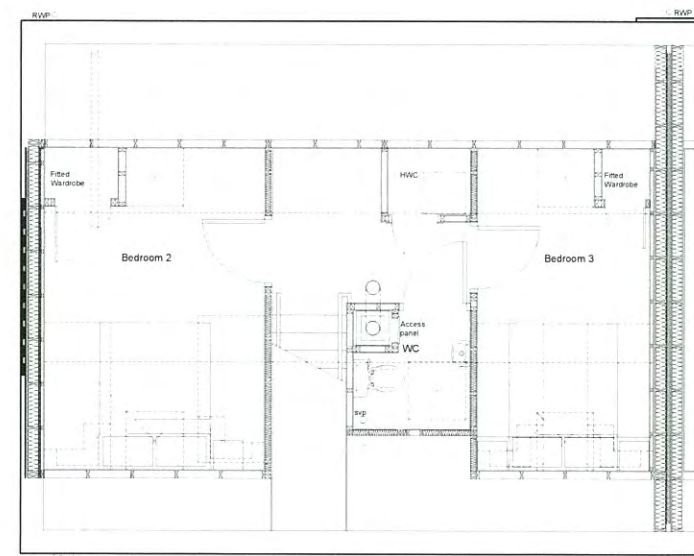
House Type B Side Elevation

Materials Palette:

- Timber framed wall construction
- Vertical timber cladding boards painted white
- Feature coloured horizontal timber cladding boards at entrance
- Natural slate tile roof finish
- uPVC gutters and RWP's
- Roof mounted photovoltaic panels (exact locations TBC dependant upon orientation and final calculations)

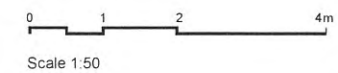


House Type B Ground Floor Plan



House Type B First Floor Plan

Item 7.4 – PLS/072/15
 15/02787/FUL
 Plan 6



Revision	Drawn	Chk'd	Date
Revision			
Drawn	PH	JJ	21-07-14
Revision			
A	Issued for Planning - For Phase 2		
Revision			
B	Internal layout altered to rationalize kitchen layout. Air source heat pumps indicated on plans		
Drawn	PH	ME	22-07-15
Revision			
C	Reference to phase 2 removed. This layout will be submitted for applications relating to Phase 1, 2, 3		
Drawn	PH	ME	09-01-16

kieppie

PERTH
 78 Tay Street
 Perth
 PH2 8NP
 Tel: 01738 431 151
 www.kieppiedesign.co.uk

Client
 Ark Estates

Project
 Balgiate Sawmill
 Kiltarlilly, Beaulieu

Drawing
 House Type B
 Plans + Elevations

Project No.
 212301

Drawing No.
 PL(20)301

Status
 PLANNING

Created	PH	Checked	JJ
Date	17-07-14	Scale	1:50 @ A1