

## The Highland Council

Lochaber Area Committee – 21 October 2015

Agenda Item	3
Report No	LA/33/13

### Winter Maintenance Priority Network – 2015/16

#### Report by the Director of Community Services

##### Summary

This report provides Members with information on winter maintenance service provision and invites the Committee to agree the winter maintenance priority routing for Lochaber for 2015/16 (further to the report to Lochaber Area Committee in August 2015, which is attached)

#### 1. Background

1.1 Section 34 of the Roads (Scotland) Act 1984 outlines the responsibilities that Roads Authorities have in relation to Winter Maintenance.

“A Roads Authority shall take such steps as they consider reasonable to prevent snow and ice endangering the safe passage of pedestrians and vehicles over public roads”.

1.2 The current Winter Maintenance Policy is attached at **Appendix A**.

1.3 The policy is in place to ensure that a consistent level of service is applied across all areas of the Highland Council and to ensure, so far as is reasonably practicable, the safety of road users. However the Policy cannot ensure and does not commit that all roads and footways will be free of ice and snow at all times.

1.4 Each area will put in place a Winter Maintenance Plan, to cover the operational details required to deliver the service within the current policy.

1.5 At the Lochaber Area Committee in August 2015, the committee **‘AGREED TO RECOMMEND** to the Community Services Committee that, in regard to the priority gritting routes for Lochaber, a review of the Winter Maintenance policy should be undertaken to remove any ambiguities over the definitions relating to the secondary routes, including the definition of small communities, and to provide the necessary resources to deliver the policy effectively’.

1.6 This will be dealt with as a starred item at the Community Services committee on 5 November 2015. However, Members should be aware that the 20 August 2015 Community Services Committee **‘AGREED** a full review of the Council’s Winter Maintenance Policy, including starting some routes at 5 am and an

assessment of how the current route policy was implemented, be brought to a future Committee meeting'. The chairman has agreed that a report on this will come back to the May 2016 Community Services committee. The recommendation from Lochaber Area Committee (at section 1.5) will be dealt with as part of this policy review.

- 1.7 That leaves the outstanding matter of agreement of the Lochaber Winter Maintenance priority routing, which was not agreed at the last Lochaber Area Committee.
- 1.8 Members will be aware that the Council agreed in December 2014 a winter Maintenance saving in this regard (£240k in 15/16 and a further £240k in 16/17 resulting in the removal of 12 lorries and gritter bodies and 12 staff over the period). The 6 vehicles for 15/16 were removed in April 2015 and the 6 staff have also been removed through vacancy management. It is in this context that the Service has to deliver a reduced level of service for 2015/16 and therefore imperative that Members fully understand that the routing proposed in the report that went to Lochaber Area Committee in August is what can now be delivered within the resources available.
- 1.9 With the first frosts already upon us, it is critical that Members approve the Winter Maintenance Plan for Lochaber and a copy is attached at **Appendix B**.
- 2.0 The main routing changes, as discussed at the last committee, are those routes affected by a move from the 'Secondary' to the 'Other' category, because the contracted vehicle servicing the school contract has less than 9 seats (including the driver) i.e. they are either small vans or cars and not a bus. These are listed below and itemised in the 'Revisions Status Indicator' of the inside page of the attached 'Winter Maintenance Operational Plan':
  - B8043 Inversanda - Kingairloch which no longer qualifies as a school bus route as it is serviced by a car
  - B8044 A861 Junctn - Kentra/ Arevegaig which no longer qualifies as a school bus route as it is serviced by a car x 2
  - Kinlochhourn road, A87 jnctn to Kingie which no longer qualifies as a school bus route as it is serviced by a small van
  - Aonachan - Highbridge - Camisky which no longer qualifies as a school bus route as it is serviced by a small van.

### **3. Implications**

- 3.1 There are no known legal implications arising from this report.
- 3.2 There are no specific equality implications arising from this report.
- 3.3 There are no known climate change/ Carbon Clever implications arising from this report.

- 3.4 There are presently no other risk implications highlighted by this report and risk shall be managed by regular review and reporting to allow corrective action to be taken where necessary
- 3.5 There are no Gaelic implications arising from this policy.
- 3.6 The re-focussing of the Winter Maintenance provision within the existing policy may mean that some roads within the “Other” category receive a lesser treatment than has been custom in previous years. Whilst this is not specifically a rural issue, it may have rural implications in some areas of Lochaber, where the policy had not previously been fully applied.

**Recommendation**

The Area Committee is invited to agree the Winter Maintenance priority network for Lochaber as presented in **Appendix B**.

Designation: Director of Community Services  
Dated: 14 October 2015  
Authors: William Gilfillan, Director  
Michael A Leary, Assistant Area Manager



# The Highland Council

---

Transport, Environmental and Community Services

## Winter Maintenance Policy

August 2013

## Winter Maintenance Policy

### CONTENTS

- 1.0 BACKGROUND
- 2.0 GENERAL
- 3.0 TREATMENT OF ROADS.
- 4.0 TREATMENT OF FOOTWAYS.

# THE HIGHLAND COUNCIL

## Transport, Environmental and Community Services

### Winter Maintenance Policy

#### 1.0 BACKGROUND

- 1.1 Under Section 34 of the Roads (Scotland) Act 1984, a Roads Authority shall take such steps as they consider reasonable to prevent snow and ice endangering the safe passage of pedestrians and vehicles over public roads.
- 1.2 This Winter Maintenance Policy relates to the Council's responsibilities as Roads Authority for adopted roads, cycle ways, footways and footpaths.
- 1.3 Cross Service Working arrangements exist between Services to ensure that Council properties receive an appropriate winter maintenance service. The appropriate Service Director will determine the appropriate level of winter maintenance service for footpaths, car parks and other areas that are the responsibility of the Council but are not on the list of public Roads.

#### 2.0 GENERAL

- 2.1 With the operational management devolved to the Areas it is essential that a common Winter Maintenance Policy is in place to ensure a consistent service for drivers passing between local Areas.
- 2.2 It is the aim of Highland Council in respect of its winter maintenance service to:-
- 2.2.1 Provide a winter gritting and snow clearing service which, as far as is reasonably practical, using the resources available, permits the safe movement of vehicles and pedestrians on the adopted road and footway network and seeks to minimise delays attributable to weather conditions.
- 2.2.2 Conduct operations having regard to the requirements of the Health and Safety at Work Act 1974 and EU and Domestic Driver Hours Regulations.
- 2.3 The Council as Roads Authority is not responsible for Winter Maintenance on unadopted roads and will not provide a Winter Maintenance service for unadopted roads. It will however make every effort to provide assistance for emergency and medical services during severe weather conditions where there is an urgent need for safe access.
- 2.4 The responsibility for Winter Maintenance on Trunk Roads lies with Transport Scotland.
- 2.5 The Council will source Winter Weather Forecasting Services from recognised Meteorological Service Providers during the period 1st October to 30th April.

#### 3.0 TREATMENT OF ROADS

The Council will endeavour to provide the highest level of service possible within the resource available. During winter, especially during severe weather, it may not be possible to keep every road free from ice and snow at all times.

The treatment of roads will be carried out based on a hierarchical system dependant on route priority. The time taken to complete the treatment of routes will vary from day to day depending

on actual weather conditions and can be expected to increase significantly during periods of snow due to having to plough both sides of the road.

### 3.1 NETWORK HIERARCHY

The following prioritised hierarchy will be used to determine the order of treatment of roads.

PRIMARY (Highest)	Strategic, Regional, Sub Regional and Link roads which serve the larger communities and permit the majority of road users to travel across the region. Main and Local distributor roads in the larger urban settlements. High frequency service bus routes operating at least 6 days a week and starting prior to 7am with identified hazards.
SECONDARY	Roads connecting smaller communities to the primary network. Link and Service roads within the larger urban settlements. Service and school* bus routes not covered by the Primary network.
OTHER	Minor rural and local access roads. Residential roads in urban settlements.

Gritting may not be completed on all routes before buses start their journeys.

\* Contracted school buses and/or mini buses (9 passenger seats or more)

The priority network will be agreed by Area Committee. Leaflets with maps showing the Primary and Secondary network will be made available to the public at the start of each winter period.

### 3.2 TREATMENT TIMES - MONDAY TO SATURDAY

The service will be provided between 6am and 9pm. Treatment after 6pm will in general be restricted to Primary routes only.

### 3.3 TREATMENT TIMES – SUNDAYS AND PUBLIC HOLIDAYS

#### 3.3.1 Sundays, 25<sup>th</sup> December and 1<sup>st</sup> January

The service will be provided between 7am and 9pm and will be restricted to the Primary network only. During periods of sustained snow, or where significant snow conditions are forecast, the service may be extended to include difficult Secondary routes.

#### 3.3.2 26<sup>th</sup> December and 2<sup>nd</sup> January

The service will be provided between 7am and 9pm and treatment will be restricted to the Primary and Secondary networks only. Where December 26th and January 2nd fall on a Sunday then a Sunday service will be provided.

### 3.4 PRECAUTIONARY TREATMENT

Precautionary treatment carried out the previous evening, normally before 9pm, in advance of forecasted adverse weather, will in general be restricted to Primary routes only.

### 3.5 TREATMENT DURING SNOW CONDITIONS

In times of severe weather, resources will be concentrated on keeping the Primary network clear and as a result there may be a delay before it is possible to treat the Secondary and Other road network, including residential streets. In exceptional snow conditions external contractors will be deployed to assist with snow clearance.

### 3.6 SNOW GATES

For safety reasons Snow Gates are located on routes where drifting snow can make the route impassable very quickly. The closure and subsequent opening of snow gates will only take place with the authority of the Police.

The roads controlled by snow gates within the Highland area are as follows:

- A939 Bridge of Brown
- A939 Grantown to Dava
- A939 Dava to Ferness
- A832 Braemore to Dundonnell
- B9007 Carrbridge to Ferness
- B9176 Struie Hill Road
- Cairngorm Ski Road
- Bealach na Ba

In severe snow conditions the Council may withdraw resources from these roads and allow the storm to abate. In such circumstances resources may be diverted to assist snow clearing operations on other parts of the network. Additional resources may be employed during such snow conditions.

### 3.7 TARGET TREATMENT TIMES

The following are the target times for completion of routes during conditions of ice and light snow.

#### 3.7.1 Monday to Saturday

PRIMARY ROUTES 8.30am

SECONDARY ROUTES 9.00am

OTHER As resources and conditions permit.

#### 3.7.2 Sundays, 25<sup>th</sup> / 26<sup>th</sup> December and 1<sup>st</sup> / 2<sup>nd</sup> January

PRIMARY ROUTES 9.30am



### 3.8 TREATMENT OF DIVERSION ROUTES.

Where a road, including a trunk road, is closed to traffic due to either planned works or an emergency situation then the agreed diversion route will be treated as follows.

#### Trunk Road Closure.

The agreed diversion route will be treated to Primary standard and signs erected at each end of the diversion and any other junctions with trunk roads, stating that there will be no overnight salting.

In an emergency situation and after Transport Scotland or its trunk road management and maintenance agents have notified the Council of the closure, every endeavour will be made to both treat the agreed diversion route appropriately and erect signs before the first overnight period.

#### Council Road Closure.

Any part of the agreed diversion route that is of a lower priority than the closed road will be treated to the same priority as the closed road.

### 4.0 TREATMENT OF FOOTWAYS, FOOTPATHS AND CYCLE WAYS.

Treatment for ice and light snow conditions on adopted footways, footpaths and cycle ways will be carried out as set out below. Each gritting route will take a significant length of time to complete. The length of time taken will vary from day to day depending on actual weather conditions.

### 4.1 NETWORK HIERARCHY

The following prioritised hierarchy will be used in determining the order of treatment of footways.

Priority	Description
PRIMARY	Main urban shopping centres. Primary cycleways.
SECONDARY	Footways serving main urban areas, schools, hospitals and minor shopping areas. Sheltered Housing and locations of special need with known identified hazards.
OTHER	Other footways as resources allow.

**4.2 TREATMENT TIMES - MONDAY TO SATURDAY**

The winter maintenance service will be provided between 6am and 6pm and routes will be treated on a priority basis as resources permit

**4.3 TREATMENT TIMES - SUNDAYS AND PUBLIC HOLIDAYS**

A service will be provided between 7am and Noon on Primary routes only.

There will be no service for footways on Christmas Day or New Years Day.

-- End of Policy Statement --



**COMMUNITY SERVICES  
Roads & Community Works**

**WINTER MAINTENANCE  
OPERATIONAL PLAN  
(LOCHABER AREA)**

**2015/2016**

	<b>Name</b>	<b>Signature</b>
<b>Prepared By</b>	<b><u>Michael A Leary</u></b> Assistant Area Manager Community Services Lochaber, Nairn, Badenoch & Strathspey	
<b>Approved By</b>	<b><u>Cameron Kemp</u></b> Area Manager Community Services Lochaber, Nairn, Badenoch & Strathspey	

### REVISION STATUS INDICATOR

Page No	Date	Revision	Description of Change	Initial
Page 28 Appendix 1. Area Map	29/07/2015	1	Amendment to Area Gritting Map: Removed from school bus route 'Secondary' and added to 'Other' route listing. B8043 Inversanda-Kingairloch which no longer qualifies as a school bus route as there are only 2 school attendees taken by car.	MAL
Page 28 Appendix 1. Area Map	29/07/2015	2	Amendment to Area Gritting Map: Removed from school bus route 'Secondary' and added to 'Other' route listing. B8044 A861 Junctn-Kentra/Arevegaig which no longer qualifies as a school bus route as there are only 7 school attendees taken by car x 2.	MAL
Page 28 Appendix 1. Area Map	29/07/2015	3	Amendment to Area Gritting Map: Removed from school bus route 'Secondary' and added to 'Other' route listing. Kinlochhourn road, A87 jnctn to Kingie which no longer qualifies as a school bus route as there are only 3 school attendees taken by small van with less than 9 passenger seats	MAL
Page 28 Appendix 1. Area Map	29/07/2015	4	Amendment to Area Gritting Map: Removed from school bus route 'Secondary' and added to 'Other' route listing. Aonachan – Highbridge – Camisky which no longer qualifies as a school bus route as there are only 3 school attendees taken by van with less than 9 passenger seats	MAL
Page 23 (Lima 52)	29/07/2015	5	Delete vehicle SY03 BFX and insert SY06 AJX	MAL
Page 3	09/10/15		Salt Locations and Quantities. Delete Carr's Corner. Salt now drawn from BEAR Scotland at Corpach.	MAL

# WINTER MAINTENANCE OPERATIONAL PLAN

## FULL DOCUMENT - CONTENTS

Lochaber Area Detailed Procedures	1
Salt & Grit Stock	2
Salt Stockpile Management	2 & 3
Treatment of Roads	4
· Network Hierarchy	4
Treatment Times	5
Treatment of Diversions Footways, Footpaths and Cycle ways	6
· Network Hierarchy	6
· Primary Roads List	7
· Public Service Bus Routes & Other Strategic Roads	7
· Secondary Roads	8
· Other Roads	8
Footways in the Lochaber Area	9
· Main Urban Shopping Routes	9
· Main Urban Footways	9
· Secondary & Other Pedestrian Routes	9
Winter Maintenance Route Book	11-20
Gritting Footways and Off-Road Areas	21-22
Resource	23
Standby System	24
Project Numbers and Task Codes	25
Appendix 1 & 2 Lochaber Winter Gritting Maps	

# LOCHABER AREA DETAILED PROCEDURES

## **ADMIN PROCEDURES**

Morning Forecast when received by Email, leave on the table in Operations Room.

24hr Forecast arrives around 12 noon, when received by email leave on the table.

Duty Officer will decide what action, if any, is required following possible conference with colleagues, will complete the Daily Action Plan and Report sheets if action is required, these will be photocopied/emailed to Duty Controller and the originals left on the table for filing.

## **NEXT DAY**

Yesterday's 24 hr Forecast to be sorted and arranged for filing by D.O. and filed in the Community Works Managers office. Completed Driver Log & Condition Report is stapled to the completed Action Plan and Weather Report and filed in the Winter Log Log daily – Each DO is responsible for 7 days of each – If no action, 'No Action' should be written on the forecast and filed as above. On handing over Duty officer/controller responsibilities at the end of duty period, Weather and action paperwork to be filed in CWM's office designated winter file.

## **DAILY PROCEDURES (Weekends / Public Holidays):**

The Duty Officer will complete an Action Plan for the next 24 hours and contact the Duty Controller by radio, telephone, or email. The Duty Controller will contact the appropriate standby drivers and advise them of the planned action.

## **NEXT DAY**

Duty Controllers to note all action taken and all road condition reports received. This all to be sent for filing in Community Works Managers office along with Drivers Log Sheets – By the Duty Officer.

Road Condition Reports are to be posted on the weather reporting website.

During periods of severe weather updated road condition reports shall be compiled and sent throughout the day for filing.

## **SALT / GRIT STOCK CONTROL**

All deliveries and transfers must be accompanied by a chit giving material type, quantity, date, origin and destination.

For deliveries into the Area, hauliers must be advised in writing that they must confirm the intended delivery time and number of vehicles and that they must leave a delivery note at the drop-off point and that payment will not be made for loads for which a delivery note has not been left at the time and place of delivery. Arrangements must be made to receive these delivery notes, by a deposit box if necessary.

Stock usage monitoring will be done by the CWO's on a weekly basis using the salt/grit stock control forms and regular on site assessments of the physical stock.

### **SALT STOCKPILE MANAGEMENT:**

(Risk Assessment & Operating Procedures)

#### **Introduction**

This procedure covers the following operations carried out by the stocking team and winter maintenance operatives.

Building Stockpiles

Loading from stockpiles.

#### **Risk Assessments**

An informal risk assessment must be carried out for each function of the operation every shift. Should this assessment highlight any hazards that cannot immediately be controlled, then despatch operations must cease until the risk is eliminated or adequately controlled.

In addition to the informal risk assessment, a formal risk assessment has been carried out, which forms part of this document.

#### **Responsibilities**

It is the responsibility of the Community Works Officer to ensure that no one operates the loading shovels unless trained and authorised to do so.

It is also the responsibility of the employee carrying out the task to ensure he is trained and authorised to carry out his duties.

#### **Personal Protective Equipment**

PPE appropriate to the operation and weather conditions to be worn.

#### **General Safety Instructions**

No one must approach the loading shovel without communicating by radio beforehand. During hours of darkness, it may be necessary to attract the driver's attention with a flashlight.

Operatives should take care when working near the stockpile when on foot due to the possibility of slumping material.

#### **Loader Driver's Procedure**

- Normal daily vehicle checks are carried out.
- Check, and if necessary prepare the ground around all loading areas and ensure that the faces are dressed off.
- Any potholes should be filled in and ground should be prepared to ensure it is solid and as even as possible.

- Faces must be 'dragged' down so that the possibility of slumping material is minimised.

### **De-stocking and Loading**

- The loader driver must position the lorry appropriately to allow ease of loading.
- When de-stocking, material shall be taken from the full width of the face to avoid a situation where there are steep faces at either side.

### **Salt Stock Locations and Quantities**

- Strontian Depot – 2200 tonnes
- Ballachulish Depot – Supplied by BEAR Scotland – approx. 200 tonnes available at all times
- Arisaig Depot – Supplied by Strontian – approx. 100 tonnes available at all times
- BEAR Corpach – Supplying Highland Council for Fort William area – approx 7,500 tonnes



## TREATMENT OF ROADS

The Council will endeavour to provide the highest level of service possible within the resource available. During winter, especially during severe weather, it may not be possible to keep every road free from ice and snow at all times.

The treatment of roads will be carried out based on a hierarchical system dependant on route priority. The time taken to complete the treatment of routes will vary from day to day depending on actual weather conditions and can be expected to increase significantly during periods of snow due to having to plough both sides of the road.

## NETWORK HIERARCHY

The following prioritised hierarchy will be used to determine the order of treatment of roads.

### PRIMARY (Highest)

Strategic, Regional, Sub Regional and Link roads which serve the larger communities and permit the majority of road users to travel across the region. Main & Local distributor roads in the larger urban settlements. High frequency service bus routes operating at least 6 days a week and starting prior to 7am with identified hazards.

### SECONDARY

Roads connecting smaller communities to the primary network. Link and Service roads within the larger urban settlements. Service and school\* bus routes not covered by the Primary network.

### OTHER

Minor rural and local access roads. Residential roads in urban settlements.

*Gritting may not be completed on all routes before buses start their journeys. \* Contracted school buses and/or mini buses (9 passenger seats or more). The priority network will be agreed by Area Committee. Leaflets with maps showing the Primary and Secondary network will be made available to the public at the start of each winter period.*

## **TREATMENT TIMES - MONDAY TO SATURDAY**

The service will be provided between 6am and 9pm. Treatment after 6pm will in general be restricted to Primary routes only.

## **TREATMENT TIMES – SUNDAYS AND PUBLIC HOLIDAYS**

### **Sundays, 25<sup>th</sup> December and 1<sup>st</sup> January**

The service will be provided between 7am and 9pm and will be restricted to the Primary network only. During periods of sustained snow, or where significant snow conditions are forecast, the service may be extended to include difficult Secondary routes.

### **26<sup>th</sup> December and 2<sup>nd</sup> January**

The service will be provided between 7am and 9pm and treatment will be restricted to the Primary and Secondary networks only. Where December 26<sup>th</sup> and January 2<sup>nd</sup> fall on a Sunday then a Sunday service will be provided.

## **PRECAUTIONARY TREATMENT**

Precautionary treatment carried out the previous evening, normally before 9pm, in advance of forecasted adverse weather, will in general be restricted to Primary routes only.

## **TREATMENT DURING SNOW CONDITIONS**

In times of severe weather, resources will be concentrated on keeping the Primary network clear and as a result there may be a delay before it is possible to treat the Secondary and Other road network, including residential streets. In exceptional snow conditions external contractors will be deployed to assist with snow clearance.

## **TARGET TREATMENT TIMES**

The following are the target times for completion of routes during conditions of ice and light snow.

### **Monday to Saturday**

PRIMARY ROUTES 8.30am.

SECONDARY ROUTES 9.00am.

OTHER As resources and conditions permit.

### **Sundays, 25<sup>th</sup> / 26<sup>th</sup> December and 1<sup>st</sup> / 2<sup>nd</sup> January**

PRIMARY ROUTES 9.30am.

## **TREATMENT OF DIVERSION ROUTES.**

Where a road, including a trunk road, is closed to traffic due to either planned works or an emergency situation then the agreed diversion route will be treated as follows.

### **Trunk Road Closure.**

The agreed diversion route will be treated to Primary standard and signs erected at each end of the diversion and any other junctions with trunk roads, stating that there will be no overnight salting.

In an emergency situation and after Transport Scotland or its trunk road management and maintenance agents have notified the Council of the closure, every endeavour will be made to both treat the agreed diversion route appropriately and erect signs before the first overnight period.

### **Council Road Closure.**

Any part of the agreed diversion route that is of a lower priority than the closed road will be treated to the same priority as the closed road.

## **TREATMENT OF FOOTWAYS, FOOTPATHS AND CYCLE WAYS.**

Treatment for ice and light snow conditions on adopted footways, footpaths and cycle ways will be carried out as set out below. Each gritting route will take a significant length of time to complete. The length of time taken will vary from day to day depending on actual weather conditions.

## **NETWORK HIERARCHY**

The following prioritised hierarchy will be used in determining the order of treatment of footways.

<b>Priority</b>	<b>Description</b>
<b>PRIMARY</b>	Main urban shopping centres. Primary cycle way's.
<b>SECONDARY</b>	Footways serving main urban areas, schools, hospitals and minor shopping areas. Sheltered Housing and locations of special need with known identified hazards.
<b>OTHER</b>	Other footways as resources allow.

### **TREATMENT TIMES - MONDAY TO SATURDAY**

The winter maintenance service will be provided between 6am and 6pm and routes will be treated on a priority basis as resources permit

### **TREATMENT TIMES - SUNDAYS AND PUBLIC HOLIDAYS**

A service will be provided between 7am and Noon on Primary routes only.  
There will be no service for footways on Christmas Day or New Year's Day.

## ROADS IN THE LOCHABER AREA

### **PRIMARY ROUTES**

- Strategic, Regional, Sub Regional and Link roads which serve the larger communities and permit the majority of road users to travel across the region.
- Main & Local distributor roads in the larger urban settlements.
- High frequency service bus routes operating at least 6 days a week and starting prior to 7am with identified hazards.

A861 Drumsallie-Ardgour-Strontian-Salen-Lochailort Road

A884 Strontian (Carnoch junction)-Lochaline Road

B863 North Ballachulish-Kinlochleven-Carnach Junction

B8007 Salen-Kilchoan Road

B8004 Banavie – Gairloch – Commando Memorial

B8006 Kilmallie Road

Alma Rd, Argyll Rd, & Ter.,

Connochie Road, Ross Place

Hill Road, Fassfern Road & Gordon Sq.,

Kennedy Rd.

Lochaber Road to bus turning circle

Lundavra Road to “viewpoint” brae.

Middle St & west end High St

Sutherland Av.

West End Car Park access ramp

### *PUBLIC SERVICE BUS ROUTES AND OTHER STRATEGIC ROADS*

Aonach Mor (Ski Centre & Quarry Access)

Ardnevis Rd., Carn Dearg, Melantee, Claggan.

Drumfada (east), Caledonian road, Lady Margaret Drive.

Montrose Av./ Montrose Sq., Inverlochy.

Transport Centre roundabout to An Aird roundabout

Transport Centre access road

Union Road, Parade Road, Bank Street, Dudley Road.

Viewforth Carpark.

West:

B8008 Arisaig - Morar

B8008 Morar village road

B8008 Glasnacardoch - Mallaig

Eastbay, Coteachen Hill to Blaven View

South:

Old A82, Ballachulish

Glencoe Village Road

White Corries ski road

## ROADS IN THE LOCHABER AREA - Contd

### **SECONDARY ROUTES**

- Roads connecting smaller communities to the primary network.
- Link and Service roads within the larger urban settlements.
- Service and school\* bus routes not covered by the Primary network.

Ben Nevis Drive and access to A82  
Bus route thro' Lochaber High School  
Camaghael loop road  
Glasdrum Drive  
Invernevis Road  
Inverroy, hill  
Lochview Drive  
Lower Heathercroft  
Underwater Centre Rd. roundabout to `T' junction  
Victoria Road

### SCHOOL BUS & MINI-BUS ROUTES.

B8005 Gairlochy-Clunes  
B849 Lochaline - Drimnin  
Alltour Rd to fire station  
Arisaig Village Rd – School (school bus)  
Acharacle School Road (school bus)  
Banavie School Road (school bus)  
Isles Glencoe sliproad & Ballachulish village hall road  
Riverside Rd and spur to KKL School (school bus)  
Roybridge school road (school bus)  
Strontian School Road (school bus)  
Tirindrish Spean Bridge (school bus)

### **OTHER ROUTES**

All 'Other' roads - subject to resources as they become available

- Minor rural and local access roads.
- Residential roads in urban settlements.

## FOOTWAYS IN THE LOCHABER AREA

### PRIMARY ROUTES

#### MAIN URBAN SHOPPING CENTRES

Fort William High Street pedestrianised area  
Cameron Sq., Monzie Sq., Gordon Sq., Station Square (incl. steps and access to toilets), diagonal path across the Parade, Nevis Sport to Transport Centre via underpass including ramp and steps.

#### MAIN URBAN FOOTWAYS

Lundavra Road. (east/left side)  
Connochie Road, Ross Pl.  
Lochaber Road. to bus circle  
Sutherland Av.  
Lundavra Road, Lochview- West End roundabout  
Drumfada,  
Lady Margaret Dr., Clerk Dr., Caledonia Road.  
Montrose Av. & Nevis Rd.  
Melantee & Ardnevis Road  
Bank St.  
Hill Rd., Kennedy Rd.  
Henderson Row  
Fassifern Rd.  
Dudley Rd and “cut thro” at junction with Fassifern Rd  
Argyll Ter./Rd.  
Caol - Glen Loy Street shopping area  
Caol - Co-op area  
Ballachulish village – West Laroch, Loanfern  
Kinlochleven village – Leven Road  
Mallaig village – Annies Brae, Davies Brae, to Railway Station

## FOOTWAYS IN THE LOCHABER AREA

### SECONDARY ROUTES

- ALL OTHER ADOPTED FOOTWAYS AND OTHER HIGHLAND COUNCIL OFF ROAD AREAS

All subject to resources available.

# Highland Council

## Winter Maintenance Route Book

### Route Number F01a

**F01a Fort William Town - High Roads**

#### **EVENING PRE GRIT AND SUNDAY AND PH ROUTE**

Middle St. & High Street, West End Car Park access ramp, Lundavra Rd, Sutherland Av. Lochaber Rd. to bus turning circle, Connochie Rd, Ross Place,. Argyll Ter. & Argyll Rd. \*\*\*\*

Kennedy Rd. \*\*\*\*, Hill Rd. Fassifern Rd north \*\*\*\*, Alma Rd \*\*\*\*, Fassfern Rd south, Gordon Sq.

Fire Station access road (both directions).

Ben Nevis Ind. Estate A82 access to Ardnevis Road, Aonach Mor Road.

Alcan Factory Rds. ~ Private Party Works (Rechargeable LRE2204 / W )

Belford Hospital ~ Private Party Works (Rechargeable LRE2247 / W )

#### **MORNING ROUTE**

##### **PRIMARY**

Middle St. & High Street, West End Car Park access ramp, Lundavra Rd, Sutherland Av. Lochaber Rd. to bus turning circle, Connochie Rd, Ross Place,. Argyll Ter. & Argyll Rd. \*\*\*\*

Kennedy Rd. \*\*\*\*, Hill Rd. Fassifern Rd north \*\*\*\*, Alma Rd \*\*\*\*, Fassfern Rd south, Gordon Sq.

Victoria Rd \*\*\*\*, Union Rd, Parade Rd. – Bank St. – Dudley Rd loop, Viewforth Car Park & Cameron Sq. An Aird Road and An Aird Roundabout, Carmichael Way (Fire Station Access)

MacFarlane Way (A82 junction to bus station to Ardlinnhe Rd) \*\*\*\*, Ardlinnhe Road (Camanachd Cres to An Aird Roundabout).

Invernevis Road, Montrose Av. \*\*\*\*/ Montrose Sq., Inverlochy, Ardnevis Rd., Carn Dearg, Polmona, Melantee, Claggan, Ben Nevis Dr. and access to A82

##### **SECONDARY**

Lochaber high School (Camagael loop road) Banavie School Rd. \*\*\*\* (school days only)

#### **NOTES:**

1/ Fort William bus routes & hills require 4 x 4 wheel drive

2/ \*\*\*\* = caution humps,bumps,chicanes on route.

3/ Driver to contact controller before starting on Priority



**Highland Council**  
**Winter Maintenance Route Book**  
**LOCHABER AREA**  
**Route Number F01b**

**F01b Fort William Low Roads & Caol (F02 Ardgour Drumsallie)**

**EVENING PRE GRIT AND SUNDAY AND PH ROUTE**

Ardgour - Drumsallie

**MORNING ROUTE**

**PRIMARY**

Ardgour – Drumsallie

**SECONDARY**

Fassifern Loop

**Notes:**

1/ \*\*\*\* = caution – humps,bumps,chicanes etc.

# Highland Council

## Winter Maintenance Route Book

### LOCHABER AREA

#### Route Number F03

**F03      B863 Kinlochleven Loop (North & South B863)**

#### **PRIMARY**

B863 North and B863 South side, A861 Nether Lochaber

#### **EVENING PRE GRIT AND SUNDAY AND PH ROUTE**

B863 North and B863 South side, A861 Nether Lochaber. Mystery World slip road, Ball. Village Hall road, old A82 (Ballachulish).

#### **MORNING ROUTE**

B863 North and B863 South side, A861 Nether Lochaber. Mystery World slip road, Ball. Village Hall road, old A82 (Ballachulish), Glencoe Village Rd & School Road

# Highland Council

## Winter Maintenance Route Book

### LOCHABER AREA

#### Route Number F04

**F04 B8008, Mallaig, Morar, Arisaig Roads**

#### PRIMARY

#### EVENING PRE GRIT AND SUNDAY AND PH ROUTE

B8008 Glasnacardoch-Mallaig, Eastbay, Coteachen Hill, Blaven View, Kingsway, (Mallaigbhaig), B8008 Morar village rd, B8008 Kinsadel-Arisaig south jnctn, Station Rd, Arisaig north jnctn link.

#### MORNING ROUTE

B8008 Glasnacardoch-Mallaig, Eastbay, Coteachen Hill, Blaven View, Kingsway, (Mallaigbhaig), B8008 Morar village rd, B8008 Kinsadel-Arisaig south jnctn, Station Rd, Arisaig north jnctn link.

# Highland Council

## Winter Maintenance Route Book

### LOCHABER AREA

#### Primary Route Number F05

**F05      B8004 Banavie to Commando Memorial Road**

#### **EVENING PRE GRIT AND SUNDAY AND PH ROUTE**

Bus route from A830 to and thro' FW Health Centre, B8006 Caol loop (Kilmallie Rd, Lochyside), Banavie - Gairlochy – Clunes - Comm. Memorial. Altour Rd to Fire Stn

#### **MORNING ROUTE**

Bus route A830 to FW Health Centre, (High Sch bus loop sch days only), B8006 Lochyside-Kilmallie Rd, B8004/5 Banavie-Gairlochy- Clunes - Achnasaul – Comm. Memorial. (Sp.Br. School rd to 3-way junction, Inverroy hill, Roybridge school rd, sch days only) Altour Rd to Fire Stn.

**Highland Council**  
**Winter Maintenance Route Book**

**LOCHABER AREA**

**Route Number F07**

**F07      A861 Strontian to Lochailort**

**EVENING PRE GRIT AND SUNDAY AND PH ROUTE**

A861 Strontian – Lochailort

**MORNING ROUTE**

A861 Strontian – Lochailort,  
Acharacle School road.

# Highland Council

## Winter Maintenance Route Book

### LOCHABER AREA

#### Route Number F08a & F08b

F08a A861 Ardgour to B8043 Junction (Kingairloch)

F08b A861 B8043 Junction to Strontian

#### EVENING PRE GRIT AND SUNDAY AND PH ROUTE

A861 Strontian – Ardgour,

#### MORNING ROUTE

A861 Strontian – Ardgour,  
Strontian School road and Clovullin Loop (school days only)

**Highland Council**  
**Winter Maintenance Route Book**

**LOCHABER AREA**

**Forecast Route Number F09**

**F09     A884 Carnoch to Lochaline**

**EVENING PRE GRIT AND SUNDAY AND PH ROUTE**

A884 Carnoch – Lochaline

**MORNING ROUTE**

A884 Carnoch – Lochaline

**SECONDARY**

B849 Drimnin

**Highland Council**  
**Winter Maintenance Route Book**

**LOCHABER AREA**

**Forecast Route Number F10**

**F10 B8007 Kilchoan to Salen**

**EVENING PRE GRIT AND SUNDAY AND PH ROUTE**

B8007 Salen – Kilchoan depot & Pier Road

**MORNING ROUTE**

B8007 Salen – Kilchoan depot & Pier Road

Strontian – Scotstown (School days only)

**PRIMARY**

B8007 Salen – Kilchoan depot & Pier Road



# Highland Council

## Winter Maintenance Route Book

### LOCHABER AREA (SECONDARY & OTHER S&O1-5)

**S&O1** # Fort William & Upper area ~ Residential Hills - Fort William & Corpach  
Lundavra and Glen Nevis and All Other Pedestrian areas and Side  
Roads

**S&O2** ## Fort William area ~ Lochyside & Caol, Glenspean Park, Leanachan  
Happy Valley, Torlundy, Spean & Kilmonivaig and All Other Pedestrian  
areas and Side Roads

**S&O3** INVERGARRY & Kinlochhourn Rd, A87 junction to Kingie and All Other  
Pedestrian areas and Side Roads

**S&O4** Kinlochleven/Balachulish/Glencoe and All Other Pedestrian areas and  
Side Roads

**S&O5** Fort William Pedestrian Areas and All Other Side Roads

**S&O6** Strontian – Polloch (4x4)

**S&O7** B8043 Inversanda - Kingairloch

**S&O8** B8044 Kentra/Arevegaig

**S&O9** Camisky Loop

Notes:

#Caution – Steep Hills, engage 4x4.

##Caution – humps,bumps,chicanes and low bridges etc

FOOTWAY GRITTING ROUTES

**Iseki Tractors fitted with blades and gritters: (J660FAS; SK52RSY; SN53EHT;) Upon the receipt of a snow warning at all levels the following action should be taken:  
Tractor drivers and back-up lorries or pick-ups with drivers nominated for a 6.00 am start.**

**PRIMARY** – MAIN URBAN SHOPPING CENTRES

Fort William High Street pedestrianised area  
Cameron Sq., Monzie Sq., Gordon Sq.  
Diagonal path across the Parade  
Nevis Sport to Transport Centre via underpass including ramp and steps.

**SECONDARY** – MAIN URBAN FOOTWAYS

**Route A:**

Lundavra Rd. (east/left side)  
Connochie Rd.  
Ross Pl.  
Lochaber Rd. to bus circle  
vicinity of “Lochaber Centre” Angus Cresc.  
Sutherland Av.  
Lundavra Rd, Lochview – W.E.  
roundabout

**Route B:**

Bank St.  
Hill Rd., Kennedy Rd., Henderson Row  
Fassifern Rd.  
Dudley Rd. & “cut-thro” at Fassifern Rd  
junction  
Argyll Ter./Rd.  
Mamore Cresc. carriageway  
Montrose Av.& Nevis Rd  
Melantee & Arnevis Rd.  
vicinity of InvernevisHouse &  
Belhaven (**Rechargeable**)

**Route C:**

Caol:  
Co-op area, Glenloy St, Glenloy shops  
FW Health Centre (**Rechargeable**)  
Corpach:  
Drumfada, Lady Margaret Dr.,  
Clark Dr., Caledonian Rd,  
Farrow Dr, Hillview Dr.

**Route D:**

Ballachulish village  
Ballachulish Surgery (**Rechargeable**)

Glencoe village  
Kinlochleven village  
Kinlochleven Clinic (**Rechargeable**)

**Route E:**

Spean Bridge village  
Roybridge village  
Invergarry village

**Route F:**

Mallaig Village  
Mallaig Health Centre (**Rechargeable**)

Arisaig Village  
Arisaig Surgery (**Rechargeable**)

**Route G:**

Strontian village  
Acharacle village  
Acharacle Surgery (**Rechargeable**)  
Lochaline village

<b>GRITTING - OFF-ROAD AREAS</b>	<b>VILLAGE</b>	<b>PRIORITY</b>
<b>Roads winter maintenance LSW0001/ F</b>		
Remote footpaths: Fassifern – Cameron, Cameron- Argyll (north), Cameron-Argyll (south), Fassifern-Victoria (south), Fassifern-Victoria (north), Victoria – Alma, MacRae's La steps, Fulton-Union, Viewforth-Fassifern (rocky brae), Monzie-Fassifern (MacIntosh), Seaview-Union, Lundavra-Grange, Lundavra-FW Primary	Fort William	2
<b>(Rechargeable to Housing - LRI4085/W (09-10)</b>		
All steps leading from High Street to Union Road and Fassifern Road	Fort William	2
Alma Road to Victoria Road (play park)	Fort William	2
Douglas Place to Alma Road – steps	Fort William	2
Grange Road to Lundavra Road – steps by 71 Lundavra Road	Fort William	2
Kinross Place – path and steps leading to Lochaber Road	Fort William	2
Lundavra Road Car Park area – steps	Fort William	2
Lundavra Rd to Dunbarton Rd-steps between 12 & 14 Lundavra Rd	Fort William	2
Ross Place – steps in front of 9-14 and 26-32	Fort William	2
Banff Crescent leading to Lochaber Road – steps at 12 Banff Crescent	Fort William	2
Lochaber Road 40-64 – steps leading to Banff Crescent Play Areas	Fort William	2
Lundavra Road – steps in front of flats 38-50, path behind 25 - 71	Fort William	2
Moray Place - all steps in front of flats	Fort William	2
Moray Place - steps to side of 1-8	Fort William	2
Ross Place leading to Campbell Court – steps	Fort William	2
Argyll Terrace - steps in front of 10-16	Fort William	2
Banff Crescent - steps between 26-28 and 18-20	Fort William	2
Douglas Place - steps between 8 and 14	Fort William	2
Junction of Lochaber Road and Sutherland Avenue – steps	Fort William	2
Kennedy Road – steps between 38 and 40	Fort William	2
Kennedy Road - steps from 111 to 115	Fort William	2
Kennedy Rd - steps in front of 123 down to 119 Kennedy Rd	Fort William	2
Kennedy Road – steps in front of 2-56	Fort William	2
Kennedy Rd down to Bruce Pl. path & steps	Fort William	2
Lochaber Road - steps at rear of No. 37 leading to Nairn Crescent	Fort William	2
Lochaber Road - steps between 21-39	Fort William	2
Nairn Crescent - steps at side of No. 1	Fort William	2
Ross Place – Entrance to both car parks at rear of Ross Place	Fort William	2
Wallace Place – steps between 11-13	Fort William	2
Wallace Place - steps in front of No. 29	Fort William	2
Wallace Place - steps to side of No. 14	Fort William	2
Carn Dearg – leading to Town Park – steps	Claggan	2
Tom na Faidhir to A82 bus stop	Claggan	2
Corpach Housing Scheme - West end to bus stop	Corpach	2
Drumfada Terrace leading to Clerk Drive – steps	Corpach	2
Lady Margaret Drive – path and steps below No. 30	Corpach	2
Foyers Road, Kinlochleven, path at No. 10	Kinlochleven	2
Lorne Dr. Sheltered Housing	Glencoe	2
West Laroch – Croft Rd	Ballachulish	2
Path from Altour Road to the A82 Bridge	Spean Bridge	2
Path from Keppoch & Mulroy Ter. To shops	Roy Bridge	2
Coteachen Hill steps	Mallaig	2
Health Centre to Clanranald Ter.	Mallaig	2
Paths at Loch Nevis Ter. & Blaven View	Mallaig	2
Fank Brae	Mallaig	2
Torr-Na-Faire & Kirk Brae	Lochaline	2

## RESOURCES

Airwave Call Sign	Registration & Pant Numbers	Vehicle Make/Type/Description & Ancillaries Winter Route Number Vehicle Base/Location	Drivers/Operatives
LIMA 14	SY57 EWT LP563033	MERCEDES Atego UNIBODY 13t Routes: FO1a & FO1b Base: Fort William	D MacIntosh – LGV R MacLean - LGV S Russell - LGV R Scott – LGV
Lima 11	SY58AMK LP262030	DAF FA LF 55.220 18T 3 WAY TIP Route: FO2a & FO2b Base: Fort William	S Steele – LGV A Horne – LGV R Kane – LGV A McMinn - LGV
Lima 26	SV53 DKL LP563029	MERCEDES 4x4 Atego 1823 AK 18t Route: FO3 Base: Ballachulish	D Cameron – LGV K Gordon – LGV R Wilkes - LGV D Christian - LGV A Grier - LGV
LIMA 45	SY07 AOJ LP262028	DAF UNIBODY FA LF 55.220 18t Route: FO4 Base: Arisaig	E Campbell - LGV J Anderson – LGV J Mitchell – LGV
LIMA 22	SY58 AOD LP563031	MERCEDES 4x4 Atego 1823 AK 18t Routes: FO5 Base: Fort William	Vacancy 1 – LGV Vacancy 2 – LGV  <b>2 Operatives remaining for other works</b>
Lima 52	SY06 AJX NP273013	26t Demountable tipper Routes: FO7 Base: Strontian	W MUIR – Non LGV D JOHNSTONE – Non LGV
Lima 30	SV07 FGK LP563032	MERCEDES 4x4 Axor 1823 AK 18t Routes: FO8a, FO8b & FO9 Base: Strontian	
Lima 61	SV53 DNJ LP563030	MERCEDES 4x4 Atego 1823 AK 18t Routes: FO10 Base: Strontian	

## WINTER MAINTENANCE STAND-BY SYSTEM:

A rota system will be arranged for snowplough drivers to be on standby at the weekends. Depending upon the severity of the forecast additional drivers and second men may be asked to go on standby. The rotas will be arranged two weeks in advance (as agreed with UNISON) and operatives are asked to honour this by advising the Community Works Officer of any inability to comply with the rota at the earliest opportunity.

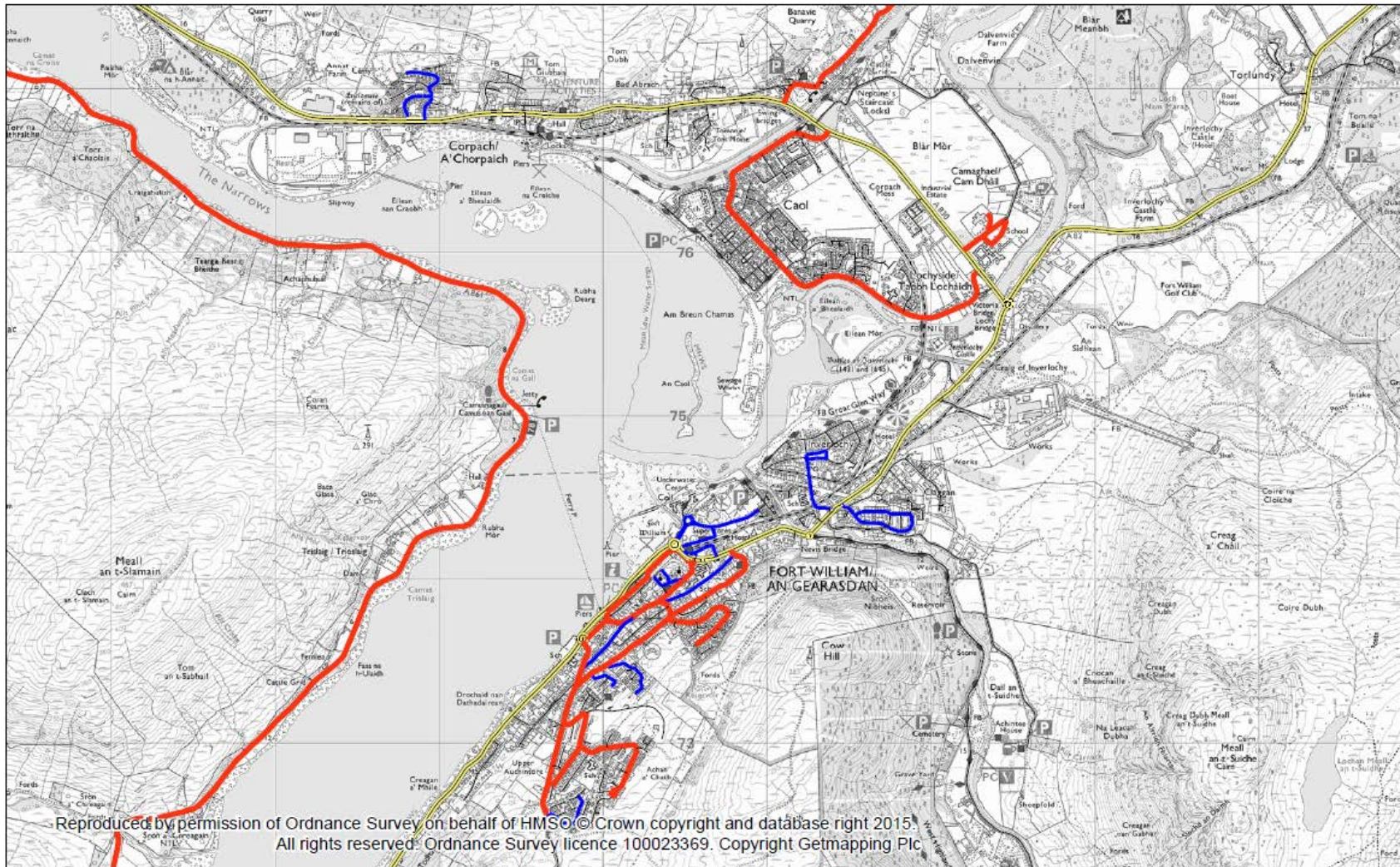
The operatives on standby at any given weekend will receive standby payment for the Friday night and the Saturday and Sunday. An employee paid an allowance for standby shall undertake when on standby duty, after completion of the normal day's work, to be available for immediate call-out duty, if and when required at any time out-with normal working hours. In practice this means that at any time of the day or night an employee on standby should be ready, properly equipped for work to start his journey to the required place of work within 20 minutes of the instruction to turn out. A failure to turn out without good reasons could lead to disciplinary action being taken.

If weather forecast for the weekend is bad, the CWO may, during the workday of the Friday, ask additional crews to go on standby for which they will receive weekend standby payment. If on the other hand the weather deteriorates during the weekend and the crews on duty cannot cope, then the CWO will ask other crews to turn out if they are available, for which normal overtime will be paid. As it was not arranged in advance of the weekend, standby payment will not be paid.

Operatives are required to complete Job Cards using appropriate Project Numbers, and Gritting Logs Sheets on a daily basis.

<b>PROJECT &amp; TASK NUMBERS:</b>	
All Council Roads - LSW0001 / task	
TASK	
G	- salting / ploughing carriageways, loading gritters, fitting/removing demountables, putting out/uplifting and filling grit bins
F	- ploughing/salting/gritting of footways
	- patrolling of route
S	- "IceLert" ready on duty but not being required to go out on the route (or for waiting period before going out). Use a separate job card for this function
LRI4121/ W	Gritting off-road areas for Housing
LRE2204/ W	Gritting Alcan Factory Roads
LRE2247/ W	Gritting for NHS
LRE2267/ W	Gritting for Transerv

# Appendix 1



## Winter Service Route Priorities

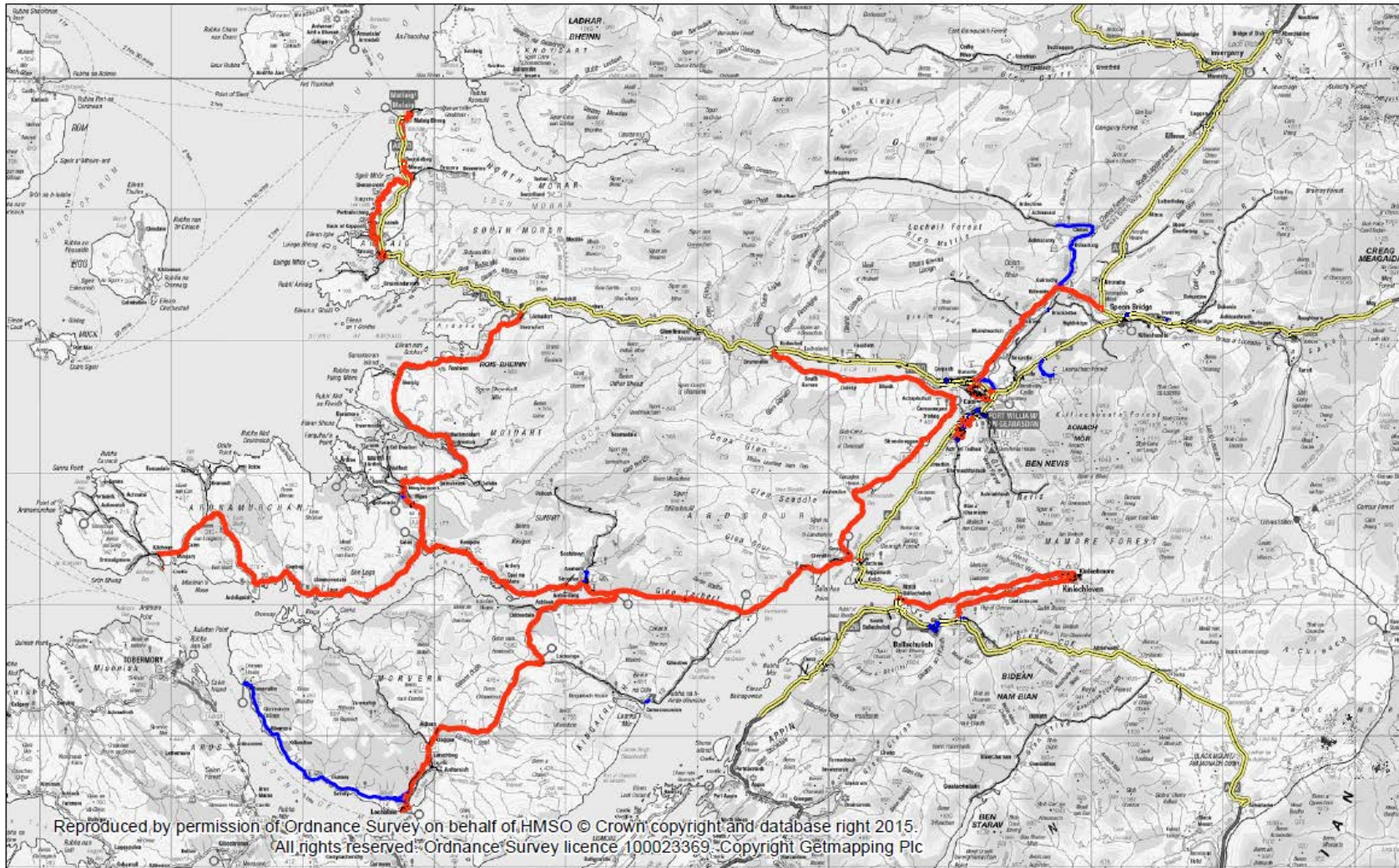
Lochaber Area (Inset)

Issue 1.0 Rev 1.0 Date 11th August 2015

Ref:  
Date: July 2015



# Appendix 2



## Winter Service Route Priorities

Lochaber Area

Issue 1.0 Rev 1.0 Date 29th July 2015

Ref:  
Date: June 2015

0 1,302,500 5,200 7,800 10,400  
Meters  
1:375,000





