

do not scale from this drawing • dimensions and levels to be checked on site by the contractor • all dimensions in millimetres unless otherwise noted • all levels in metres unless otherwise noted

revisions & notes

rev A amended site scheme, maximised retention of vegetation, removed parking alterations, reduced total no. of accommodation units from 6 to 4, amended design to block B, removed block C from proposal December 2015 HR

© rural design ltd

The Green, Portree, Isle of Skye, IV51 9BT
 tel. 0(44)1478 613379
 www.ruraldesign.co.uk studio@ruraldesign.net

RURAL DESIGN ARCHITECTS

Client

Perle Hotels Ltd

Dwg No. 242/PL/005A

Project

Bosville Hotel Phase 3

Status

Planning

Drawing Title

Proposed Site Plan

Scale

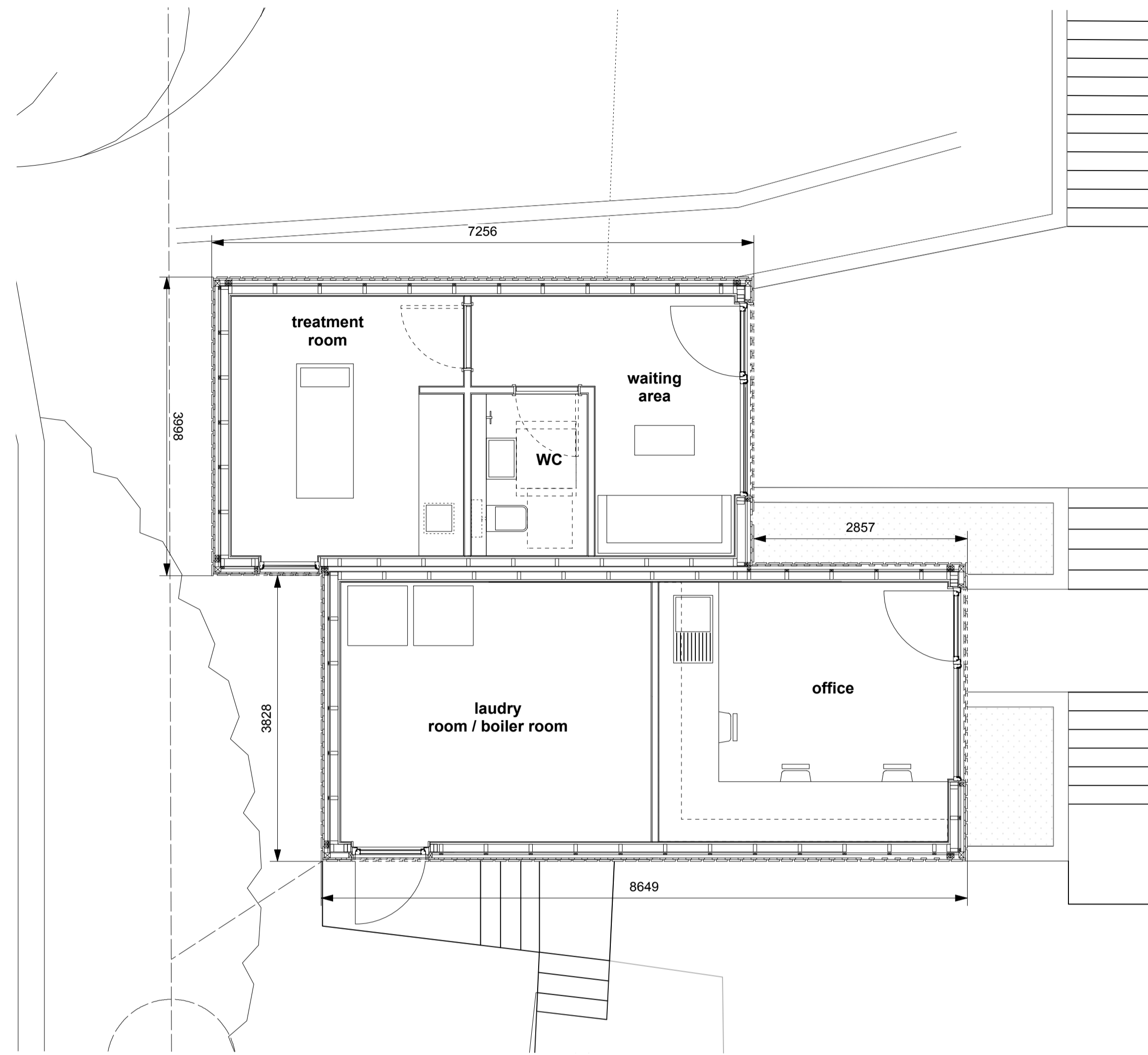
1:125@A1

Date

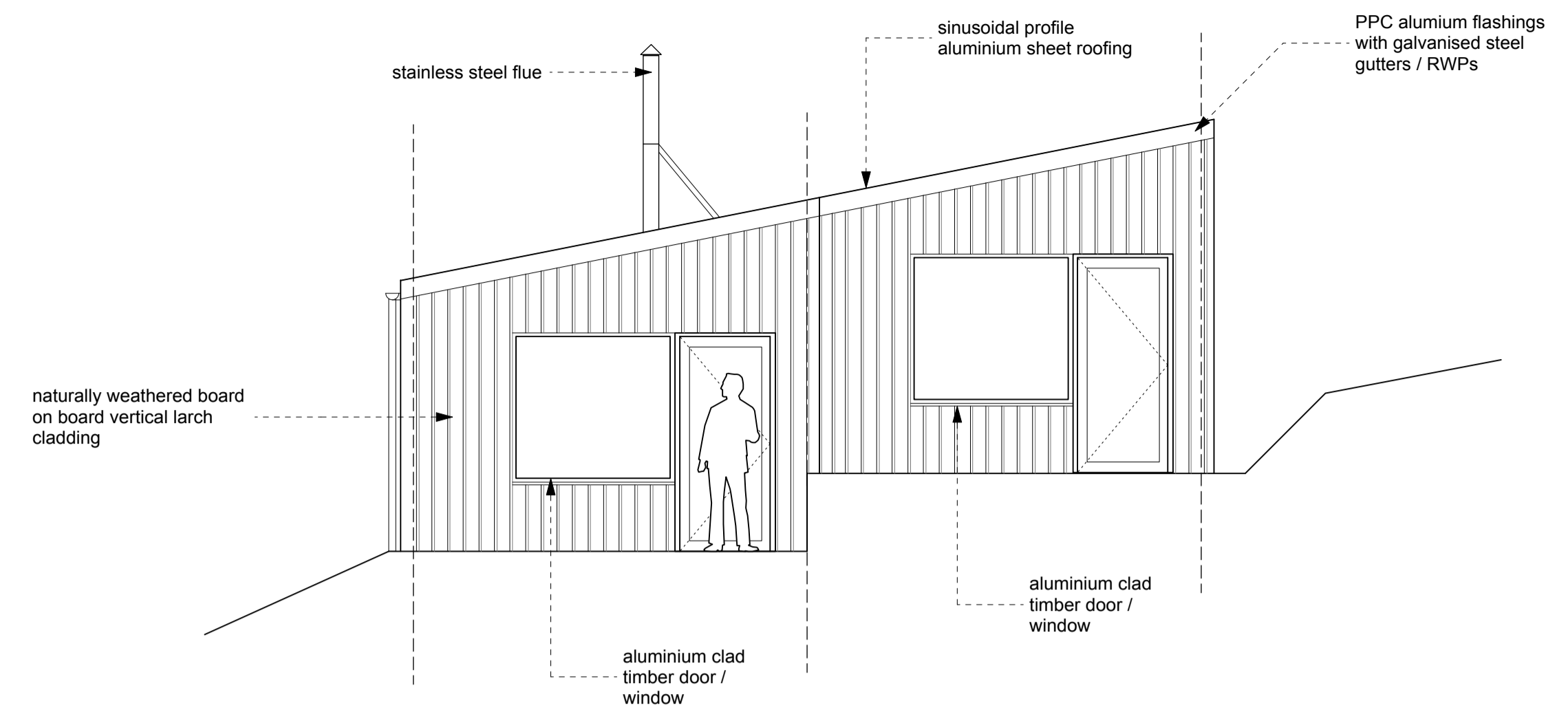
Dec 15

Drawn

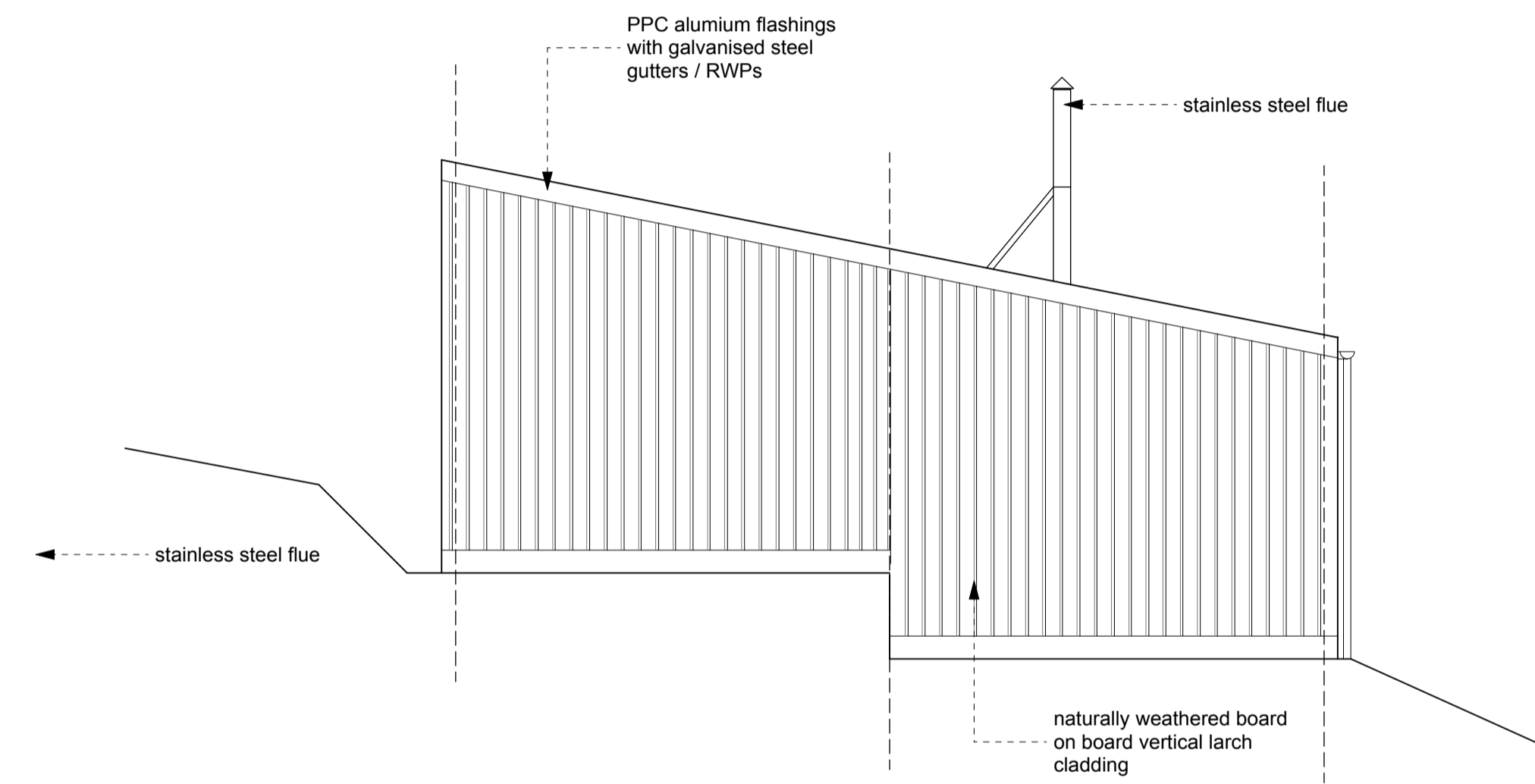
HR



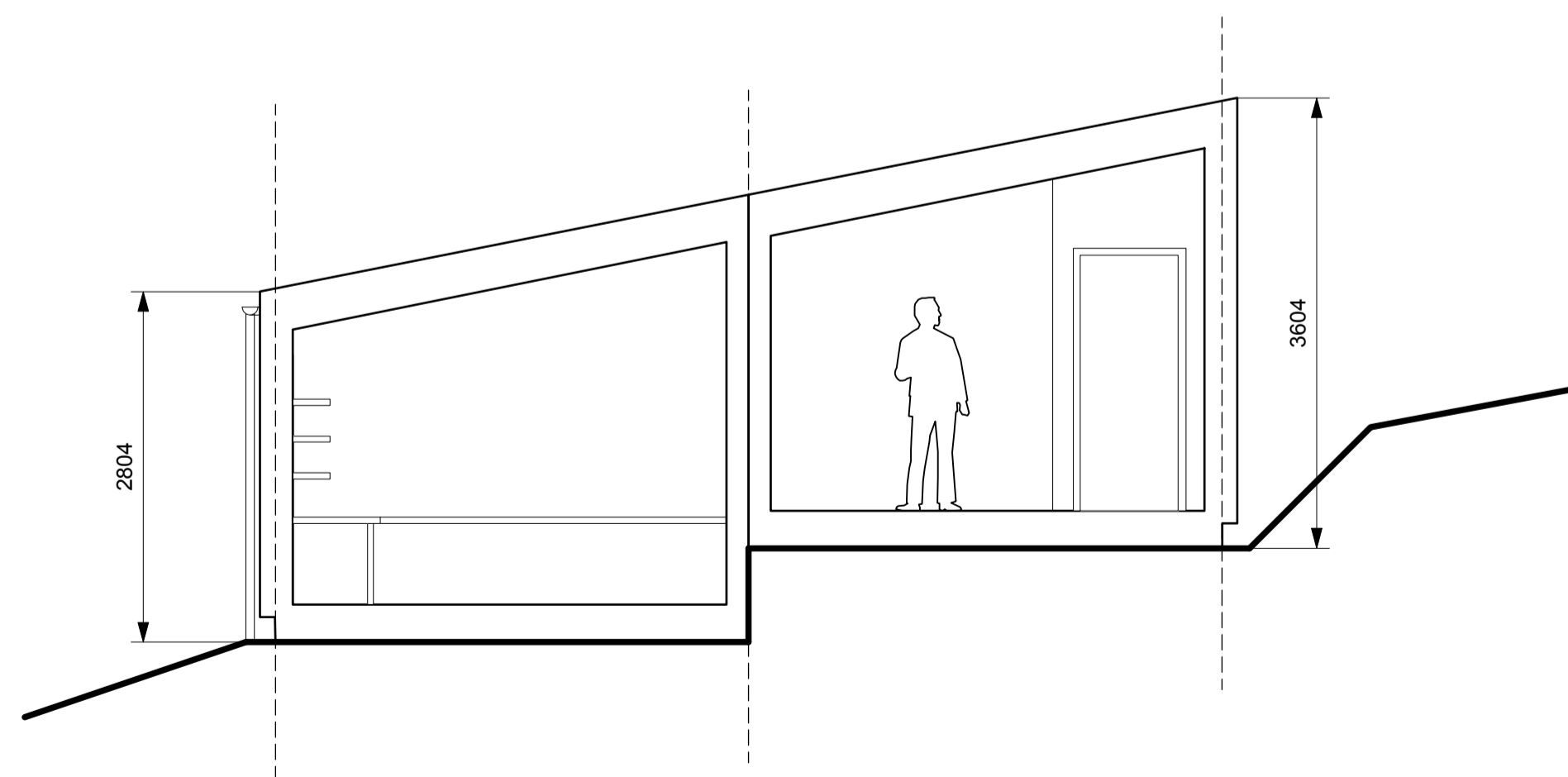
Floor Plan



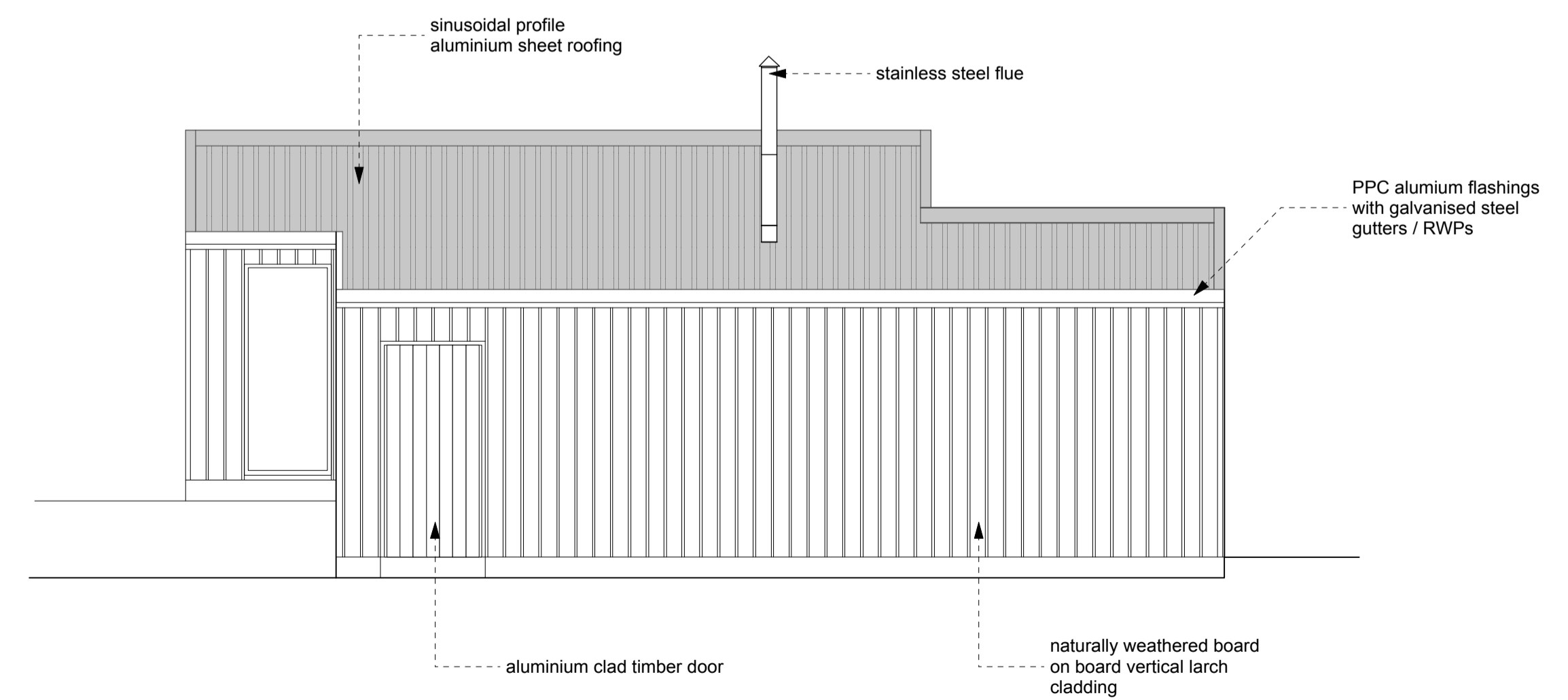
Front Elevation



Rear Elevation



Section AA



Side Elevation

do not scale from this drawing - dimensions and levels to be checked on site by the contractor - all dimensions in millimetres unless otherwise noted - all levels in metres unless otherwise noted

The Green, Portree, Isle of Skye, IV51 9BT
tel. 0(44)1470 521555
www.ruraldesign.co.uk studio@ruraldesign.net

RURAL DESIGN ARCHITECTS

Client

Perle Hotels Ltd

Dwg No. 242/006

1:50@A1

Project

Bosville Hotel Phase 3

Status

Planning

Drawing Title

Proposed Block A Details

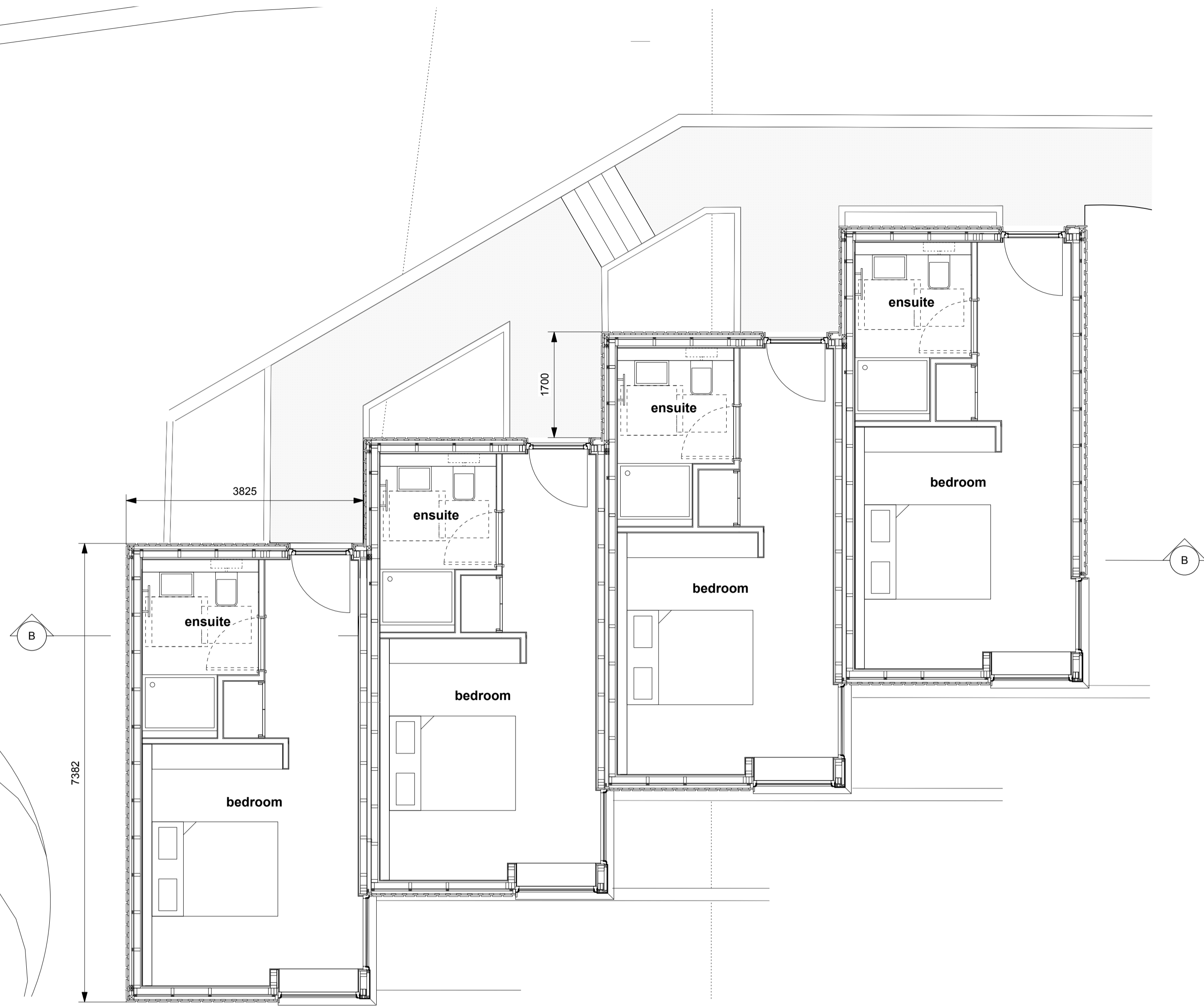
Scale

August 15

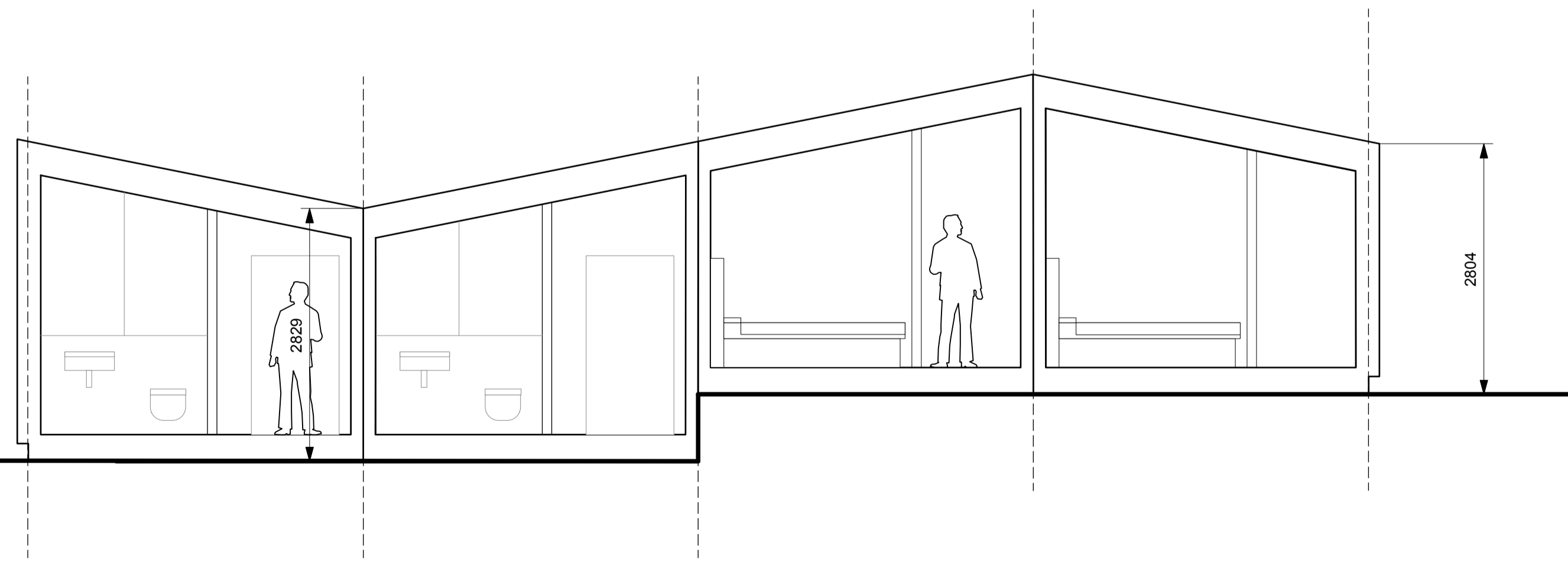
Date

HR

Drawn

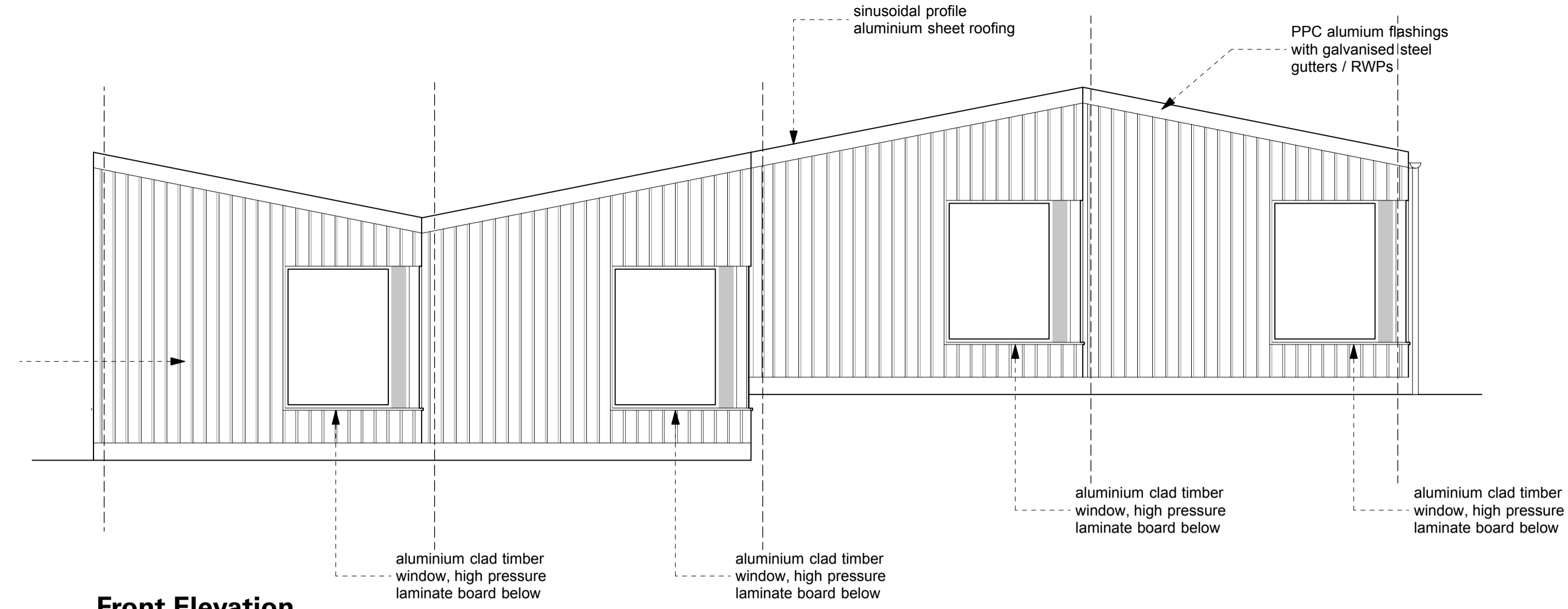


Floor Plan

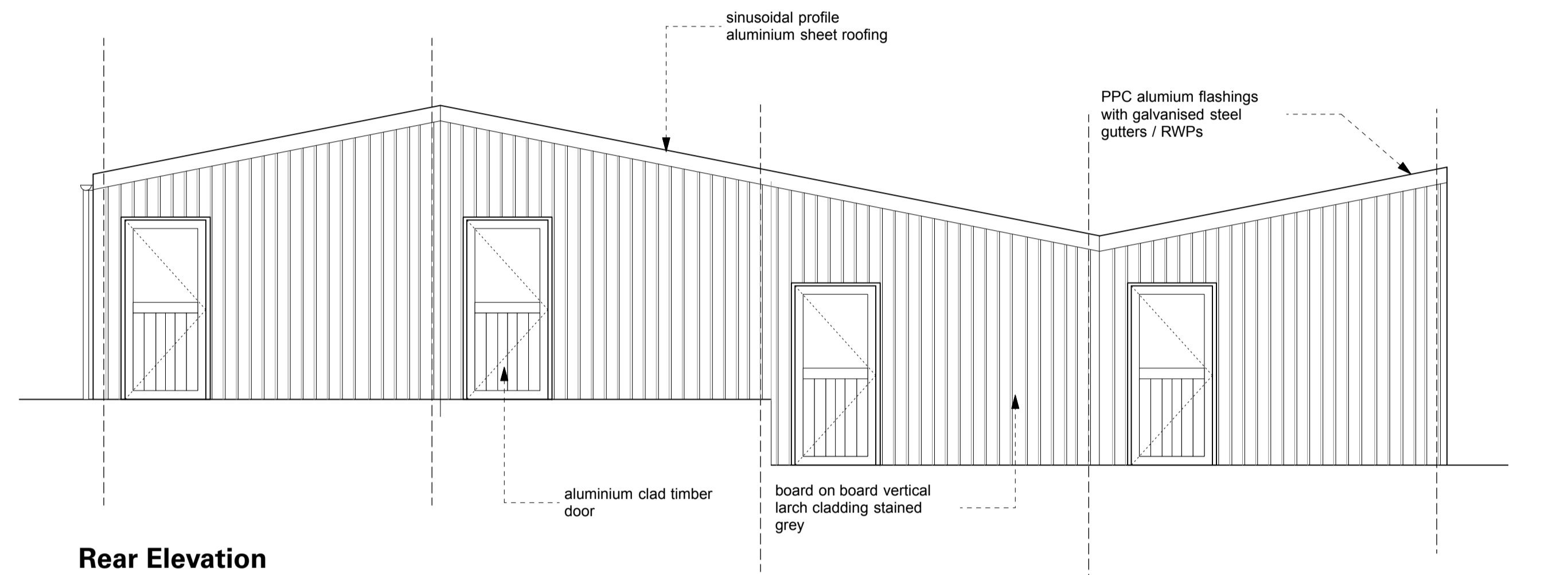


Section BB

board on board vertical larch cladding stained grey

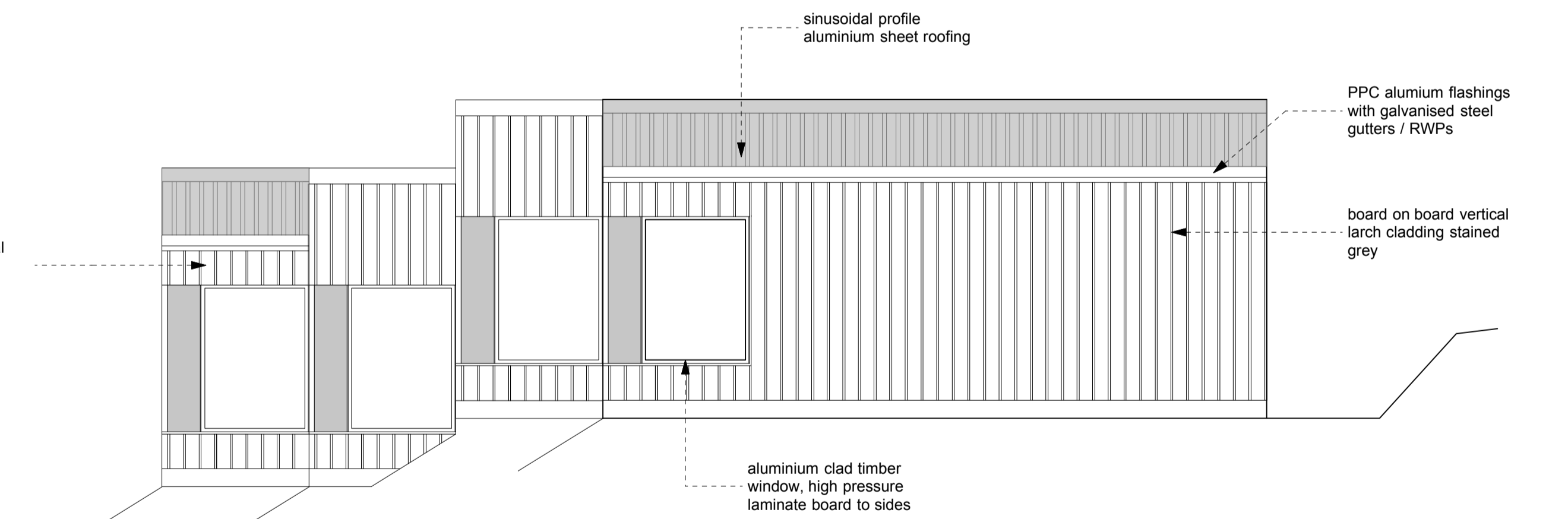


Front Elevation



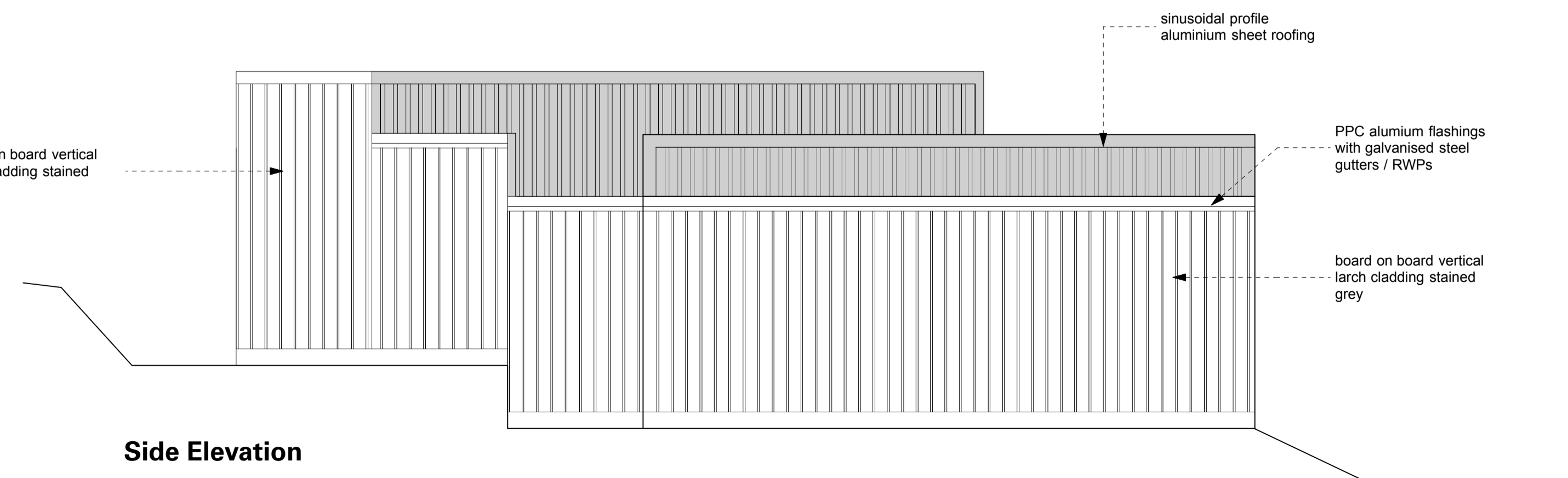
Rear Elevation

board on board vertical larch cladding stained grey



Side Elevation

board on board vertical larch cladding stained grey



Side Elevation

do not scale from this drawing dimensions and levels to be checked on site by the contractor all dimensions in millimetres unless otherwise noted all levels in metres unless otherwise noted

revisions & notes
rev A amended site scheme, maximised retention of vegetation, removed parking alterations, reduced total no. of accommodation units from 6 to 4, amended design to block B, removed block C from proposal December 2015 HR

© rural design ltd

The Green, Portree, Isle of Skye, IV51 9BT
tel. 014411478 613379
www.ruraldesign.co.uk studio@ruraldesign.net

RURAL DESIGN ARCHITECTS

Client
Perle Hotels Ltd

Dwg No.
242/PL/007A

Project
Bosville Hotel Phase 3

Status
Planning

Scale
1:50@A1

Date
Dec 15

Drawn
HR

