

LOCHABER DISTRICT PARTNERSHIP

AGENDA

**FOR THE MEETING TO BE HELD ON
TUESDAY 25 OCTOBER 2016
IN THE NEVIS CENTRE, AN AIRD, FORT WILLIAM**

THE MEETING COMMENCES AT 1.30 PM

1.30pm - 1.40pm Welcome & Apologies
Previous action note of 21 June 2016 (attached)
- update on actions not otherwise on the agenda

General Business

1.40pm - 2.15pm **1. Substantial Project updates – standing item**

- 1.1 New Hospital facility
- 1.2 Family centre

2. DP Instructed Business/Working Groups – standing item

- 2.1 Plantation planning group
- 2.2 Claggan – projects/community work emerging

3. Area Community Planning documents - standing item

- 3.1 Lochaber District partnership plan - progress updates
District Managers (Adult Services, Children and Families)
Partners / communities (attached) - (papers attached)
- 3.2 CLD plan
- 3.3 Locality Action Plans
- 3.4 Adult and Children's service plans
- 3.5 South Lochaber micro consultation results (papers attached)
- 3.6 Upper Achintore play park consultation results/action plan (paper attached)

Comments invited from the public on the above general business

Plan Spotlight **4. Community Safety**

2.15pm - 3.00pm 4.1 Lochaber 'road safety awareness week' (debrief)
4.2 Community Justice awareness input / HTSI Margaret McShane

Comments invited from the public on the above general business

Lochaber Community Planning Structure

3.00pm – 4.30pm **5. Moving forward**

- 5.1 Partner and public discussion (papers attached)

Meeting close approx. 4.30pm - Please note all timings are approximate and a comfort break will be made available at some point during the meeting as the agenda allows.

LOCHABER DISTRICT PARTNERSHIP

ACTION NOTE FROM THE MEETING HELD ON: TUESDAY 21 JUNE 2016 AT 1.30PM IN THE COUNCIL CHAMBER, LOCHABER HOUSE, FORT WILLIAM.

PRESENT: Michael Foxley (Chair); Bren Gormley, Brian Murphy, Emma Taylor, Dot Ferguson, Kath McAvoy (HC); Flora McKee (VAL); Mark Richardson (HLH); Marie Law, Ross Mackenzie (NHSH); Pat McElhinney (SFRS); Ellen Morrison (HC – note).

APOLOGIES: Thomas MacLennan, Ben Thompson, Catriona Hunter.

IN ATTENDANCE: Simon Jeffrey, Georgina Green, Robert More (HC), Jennifer Davidson (HLH).

ITEM	SUBJECT	ACTION AGREED	LEAD
	Previous action note of 19 April	Agreed.	
	Update on actions not otherwise on the agenda		
	(i) HDAP – Lochaber funding proposal (action plan 2016/7)	Flora McKee advised that Voluntary Action Lochaber and NHS Highland had lodged an application to the HDAP fund. The “streetwork” element of the application has been deemed not eligible for the fund. Flora McKee to follow up this response on behalf of the District Partnership.	FMCK
1	Substantial project updates – standing item:		
	New Hospital facility	Update was provided by Ross Mackenzie (Area Manager West, NHS Highland). Noted was:	

		<p>1.1 Three sub-groups have now been formed – Operational Delivery; Community and Engagement; and Transport.</p> <p>1.2 There are ongoing discussions regarding the helicopter landing site.</p> <p>1.3 The new build is within the Capital Programme, subject to making a sound business case. Aim would be to commence the building project by 2020.</p> <p>1.4 The new hospital facility would be a consultant led service.</p> <p>Update was provided by Kath McAvoy (Area Manager West, Care and Learning Service). Noted was:</p> <p>1.5 Meetings to discuss the project continue to be held.</p> <p>1.6 Funding is being pursued/discussed.</p> <p>1.7 Care and Learning staff currently based in Fulton House to be relocated to Camaghael Hostel by September/October 2016.</p> <p>1.8 Timescale for the complete project is three years.</p> <p>Flora McKee provided an update to the District Partnership. No progress to report. Lines of communication remain open at the moment with the Robertson Trust.</p>	
2	District Partnership business/working groups – standing item:		
	Lochaber "Road Safety Awareness Week"	<p>Pat McIlhinney (Scottish Fire and Rescue Service) updated members on progress to date. The following was noted:</p> <p>2.1 Work continues towards the family event to be held on 3 September, which will form part of "Road Safety Awareness Week".</p> <p>2.2 Positive feedback has been received on the road safety seminars already held (February and June).</p> <p>2.3 Local schools are promoting the seminars and road safety awareness week. The Rotary Club of Lochaber have given funding towards a "pass plus" further driving course.</p> <p>2.4 District Partnership members were encouraged to raise awareness of the family event to be held at Lochaber High School on 3 September, 11am-1pm. Further information to be circulated when available.</p> <p>2.5 Supply of defibrillators. Michael Foxley to follow-up this matter.</p>	PMCIL/ ET MF
	Safe Highlander 2016	<p>Jennifer Davidson (HLH) provided feedback on the Safe Highlander event that was held on 8 June. Noted was:</p> <p>2.6 One hundred and seventy five (P7) children from Lochaber schools visited the event.</p>	

		<p>Sixteen young people from Lochaber High School along with adult volunteers assisted on the day.</p> <p>2.7 Organisations with sets were HM Coastguard; Scottish Fire and Rescue Service; Scottish Ambulance Service; Police Scotland; Youth Action Team (Highland Council); Fujitsu and Scottish and Southern Energy.</p> <p>2.8 The sets of HM Coastguard and Police Scotland proved most popular. From comments by the children other Partners may require to update their sets in order that they are more relevant to the "current period".</p> <p>2.9 For next year's event it is hoped to get older young persons involved, who could also pass on their experiences.</p>	HLH
	Plantation planning group	<p>Emma Tayler provided a progress update. Noted was:</p> <p>2.10 High Life Highland were credited with the significant work that has been done in the area with more activities being aimed at adults and also utilising use of the facilities at the new Lundavra Primary School.</p> <p>2.11 There is a renewed enthusiasm in the area.</p> <p>2.12 A further multi-agency meeting is to be held in September.</p> <p>2.13 A public engagement/fun day is planned for Friday 1 July.</p>	
	Claggan – projects/ community work emerging	<p>Flora McKee advised that a community event, led by the Lochaber Environmental Group's Zero Waste Project had been held on 11 June. It had been well attended by approximately 70 persons.</p> <p>A separate meeting being organised by Voluntary Action Lochaber and the Highland Council's Tenant Participation office is to be held on 30 June. Invite letters are to be sent out to the community. One of the items for discussion on the day will be the formation of a tenants group.</p>	
	South Lochaber micro consultation/ Lochaber Partnership market place event	<p>Emma Tayler updated the Partnership on both the Lochaber Partnership Market Place event held in Ballachulish on 23 May and the South Lochaber micro-consultation. Noted was:</p> <p>2.14 This was the second market place event held. It had been well attended, with good engagement from the community.</p> <p>2.15 Market place events will be bi-annual and will rotate to the five areas of Lochaber. The next will be held in Arisaig on 22 November.</p> <p>2.16 A full report on the South Lochaber micro-consultation will be available for the next meeting of the District Partnership.</p>	
3	Area Community planning documents – standing item:		

<p>Lochaber District Partnership plan</p>	<p>The "Healthier, Safer and Stronger" section of the Community Development Plan had previously been circulated for information. Emma Tayler asked Partners to provide her with any status updates prior to the refreshed document being published on websites.</p> <p>Noted from discussion was:</p> <p>3.1 Points 1f(1) and 2h(2) – should these points remain in the plan? High Life Highland to look at and report back to the District Partnership (Points to be merged).</p> <p>3.2 Jim Douglas to forward text to the Chairs for a letter to be sent to VisitScotland and Nevis Range.</p> <p>3.3 Point 2h(3) – High Life Highland to look at and update the status.</p> <p>3.4 Point 2j (5) – Community use of new schools. This matter is still being discussed by Highland Council. Bren Gormley and Michael Foxley to follow up with the Council.</p> <p>3.5 Point 3c(7) – Mapping of childcare provision still outstanding. Early Years to action. Report to be presented to next meeting of the District Partnership.</p> <p>3.6 Point 4g(1) – To be followed up at an elected Members Ward Business meeting.</p> <p>3.7 Point 4g(3) – Develop a "place of safety" - should be included in the plans for the new hospital. Marie Law to provide an update at a future meeting of the District Partnership on what is currently available at the Belford Hospital. Status to change to amber.</p> <p>3.8 Point 4g(4) – What is happening with this analysis? Statistics on various demographic groups are available, however alcohol is not always the primary reason for a hospital admission. Michael Foxley to raise matter at a Health Board meeting</p>	<p>MR</p> <p>JD/MF/ BG MR</p> <p>BG/MF</p> <p>KMCA/ GG DF/ET</p> <p>ML</p> <p>MF</p>
<p>Community Learning Development Plan</p>	<p>Mark Richardson updated members on progress to date. The following was noted:</p> <p>3.9 Community Learning Development priorities will be included within the Lochaber Community Development Plan.</p> <p>3.10 A meeting of Community Learning Development leads to be held on 24 June. Things may be clearer after that.</p> <p>3.11 Adult Learning Partnership. High Life Highland co-ordinate this group. Mark Richardson to check if there is a robust link to other partnerships/organisations.</p>	<p>MR</p>
<p>Locality Action Plans</p>	<p>Emma Tayler referred to the report "Taking Forward Local Community Planning" presented to the Highland Council's Communities and Partnerships Committee on 9 June. Link to the report http://www.highland.gov.uk/meetings/meeting/3705/communities_and_partnerships_committee The following was highlighted to the Partnership:</p> <p>3.12 Community planning is no longer a single agency responsibility. (Highland Council have</p>	

		<p>been lead up until now)</p> <p>3.13 The area (Lochaber) is keen to continue as it is currently set up. Further discussion is required once it is known who will be the area's agency lead.</p> <p>3.14 The timescale is Autumn 2016.</p>	
	Comments invited from the public on the above general business	Public comments were noted as follows:	MF/BG
	Plan Spotlight (verbal reporting)	3.15 Community use of schools (this would also include outwith term times and out of school hours). Could Caol Community Centre be included? Why is there not an electronic booking system available? Michael Foxley and Bren Gormley to follow-up	
4	Children & families (LDP plan sections 2, 3, 4)	<p>Kath McAvoy, Area Manager West circulated to the meeting staff information for the Lochaber Family Team; the Early Years structure for Highland along with their Lochaber Development Plan based on "For Highlands Children 4 outcomes". She continued with an update on current work and recent appointments for the West Area and at HQ level. Noted was:</p> <p>4.1 Sandra Harrington, Head of Early Years; Tracy McIlvar, Family Resource Co-ordinator and Marion MacSween, Early Years Officer (West) are all new to post. It is hoped they would be in attendance at the next Partnership meeting to introduce themselves.</p> <p>4.2 The Lochaber Children's Services Development Plan to have a line in the District Partnership plan.</p> <p>4.3 A more detailed breakdown of staff job descriptions and office contacts was requested.</p> <p>4.4 Nursery hours extension – look to clarify if provision has shifted towards the Council operating/providing more places.</p> <p>4.5 Recruitment of staff is still an issue across the Care and Learning Service.</p> <p>4.6 Kilmallie Playgroup – a request had been received from Councillor Ben Thompson for professional support and guidance to be offered to this group.</p> <p>Also in attendance at the meeting to provide updates were Simon Jeffrey, Practice Lead for School Years; Georgina Green, Practice Lead for Early Years and Robert More, Youth Action Team Manager (who is based in Wick). Noted from their updates was:</p> <p>School Years (School Nurses and Children Services Workers)</p> <p>4.7 Detail of a course specific for school nurses still to be agreed at national level.</p> <p>4.8 The immunisation programmes that are undertaken by School Nurses.</p>	<p>KMCA</p> <p>ET</p> <p>KMCA</p> <p>KMCA/ NY</p>

- 4.9 There are currently forty children on the caseload for the Children Services Workers.
- 4.10 Funding had been secured via the Childcare Partnership for clients to access High Life Highland activities.
- 4.11 There has been an improvement for clients transitioning from Children's Services to Adult Services.
- 4.12 There is good joint service working between Children's Services, NHS Highland and the Third Sector.
- 4.13 School nurses have set days for drop-in sessions where young persons can access mental health support/services.

Early Years (Health Visitors and Community Early Years Practitioners)

- 4.14 The "Universal Health Pathway". The number of visits for a child in its first year has increased from three to eight visits. All visits take place in the child's home.
- 4.15 With the increased workload extra funding has been made available from the Scottish Government for an additional member of staff.
- 4.16 The Early Years Practitioners have set up a parenting programme called "Stepping Stones". Classes have been held in the Plantation and Lundavra Primary school. It is hoped to roll-out the class to the Caol campus once open.
- 4.17 Baby massage classes have been held in the Gaelic school, Lundavra Primary school and in south Lochaber. Hope to roll-out classes to Acharacle and Treslaig areas over the summer months.
- 4.18 A vacancy for an Early Years Practitioner to be advertised shortly.

Youth Action Team

- 4.19 The Youth Action Team is a smaller team covering Highland area, with two posts based in Fort William - a Social Worker and a Substance Misuse Worker. The Social Worker post is currently vacant and the Substance Misuse Worker commenced employment week commencing 20 June. Therefore due to staffing resources the Team can only offer the minimum/statutory level of support at present.
- 4.20 Normally cover the 12-18 years age group, with visits to local high schools and early intervention work.
- 4.21 As part of the "road safety week" Emma Tayler requested, if possible, that visits are made to the four high schools in Lochaber (for those that want them) to talk about drink/drugs driving etc. Simon Jeffrey/Robert More to progress and to contact Pat McIlhinney to include in the programme.

SJ/RM/
PMCIL

	<p>Mark Richardson updated the Partnership on youth provision in the area. Copies of newsletters for the four youth work areas (Ardnamurchan; Fort William; Mallaig and South Lochaber) had previously been circulated to the Partnership. Noted from discussion was:</p> <p>4.22 Feedback comments will now be sought on the content of the newsletters. 4.23 Funding – the youth workers sessional budget has been reduced by a third. 4.24 There will be no winter conference for the Highland Youth Parliament due to the reduction in funding.</p> <p>Summer Activities - The information detailing the summer programme is now available online. Youth workers in the Lochaber area to provide two "Fusion" events over the summer.</p>	
Youth provision and High Life Highland summer activity programme		
Playparks (Report 1)	<p>Emma Taylor spoke to the previously circulated report. The District Partnership were asked to note the position re progress and developer monies held by Highland Council; assist in the promotion of the Upper Achintore consultation work and promote the formation of a tenants association in Claggan. Noted from discussion was:</p> <p>4.25 Feedback from the Upper Achintore consultation will be reported back to the District Partnership. 4.26 Ardgor – there is already a group looking at forming a play area.</p>	VAL/HC
5	<p>Public comments were noted as follows:</p> <p>5.1 Astro-pitch in Upper Achintore - Councillor Brian Murphy asked for the District Partnership's support for this facility to remain open (currently closed due to health and safety). In principle the District Partnership supported the retention of the area in the former Upper Achintore School site, however would await the outcome of the public consultation currently being carried out. 5.2 Additional Support Needs in schools is to be reduced to the level of statutory requirements only. Request for a report by the Care and Learning Manager to the next meeting of the District Partnership detailing the reduction and the impact of this.</p>	Norma Young

**‘HEALTHIER, SAFER & STRONGER’
 Lead Forum: LOCHABER DISTRICT PARTNERSHIP**

Health, Well-being and community safety priorities. Note this plan also incorporates ‘Greener’ priorities that promote healthier lifestyles and well-being

High Level statement	Aim	Action detail	Who	Status	CLD plan	LOIP
1 Support safe, responsible use of the natural environment for health promoting activity	d. Partners will encourage developments that promote the growing of local healthy foods for own or retail consumption ie creation of allotments, encouragement of local produce markets, social enterprises (food production & retail) & key promotional events	1. Sustaining and appropriate expansion (if required) of ‘SLUG’ allotments in Upper Achintore	SLUG/ FCS/ VAL	G	CC	
		2. Establishment of a local food/craft market in Fort William and / or social retail consortium enterprise	VAL	B		
		3. Expansion of allotments scheme. Highland Council to write to community councils to gauge interest and subsequently advise what could be available	HC	G		
	e. Partners will review current and explore new opportunities to reduce health inequalities through the use of the natural environment	1. Further develop opportunities that encourage more use of the canal and surrounding area	Scot Canals	A		
		2. Further develop opportunities that encourage more use of our forests (<i>reporting required from FCS/SNH on specific activity under this aim</i>)	FCS			
	f. Partners will support activity which promotes community members to take up roles as trainers and assessors which in turn support individual and club activity promoting healthy lifestyle choices	1. <i>Highland Council to write to community councils to gauge interest and subsequently advise what could be available</i>				
		2. Provide enhanced training opportunities for new and existing volunteer trainers and assessors to develop and grow.	HLH/ VAL/ LSA	A	L/ CC	
		3. Increase the number of community members to take up Volunteer trainer and assessor roles. (<i>requires update from VAL/HLH + benchmark to monitor against</i>)	HLH/ VAL/ LSA		L/ CC	

2	Jointly promote opportunities for increased physical activity and physical & mental health promotion for children and young people	h. Support initiatives to improve accessibility for young people to engage more readily with health services	1.	Maintain the current provision of HLH Lochaber Youth Clubs	HLH	G	YW	
			2.	Mapping of voluntary sector clubs supporting young people inc. type of activity, where they are held, staffing (inc any relevant training/coaching qualifications etc)	HLH/ VAL	R		
			3.	Establish a new youth provision in Mallaig.	HC	G		
			4.	Develop 2 projects per year to engage young people with Health services. <i>(Requires discussion – what does this mean, how is it to be reported)</i>	NHS/ HLH	R	YW	
			i. Encourage the further development of the Lochaber youth forum to initiate activity/projects that promote healthier lifestyle choices	1.	Lochaber Youth Forum members will meet once a term in it's own area then as a Lochaber Area twice per year. Lochaber Youth Forum will then attend the Pan-Highland Youth Parliament.	HLH	A	YW
				2.	Young people through the Youth Forum will play an active role in local democracy.	HLH	A	YW
			j. Promote and encourage the use of mobile play resources available to the Lochaber area	1.	VAL to continue to operate and develop the toy library with financial support from Highland Council (Early years monies)	VAL	G	
				2.	Further develop the use of existing mobile skate and football equipment throughout Lochaber	HLH/ NHS	G	YW
				3.	Community consultation – Claggan re: use of developer contributions and enhancement of play facilities	VAL/ HC/ NHS	A	CC
				4.	Community consultation – Upper Achintore re: use of developer contributions and enhancement of play facilities (now complete – action plan in place)	VAL/ HC	G	CC
				5.	Establish system/structure to oversee the booking and community use of new school facilities.	HC/ HLH	R	
				6.	Work with Caol community to develop new community outdoor area/play space next to new school campus <i>(Community have established their own play park group and are looking at redeveloping Banavie</i>	Caol com group	A	CC

		<i>Road play area in Caol</i>					
	7.	Implement Plantation community space project inc. new play area (project complete)	PCA	G			
	8.	Support enhancement of Banavie play park (<i>community group established</i>)	Scott Canal s/Co m Grp	A	CC		
	9.	Support the enhancement of Ardgour play park (<i>community group established</i>)	playpark SCIO/HC	A	CC		
	10.	Support the development of new play facilities – Arisaig project	Arisaig Com Trust	A	CC		
		<p>The Community of Parents of Play (COPPE) is the provider of the Ardgour Play Park. This group is involved in improving the availability of high quality, evidence-based programming opportunities for families with young children who are affected by mental health issues.</p> <p>There is a community group, the Family Support Network, to provide a link to other people affected by mental health.</p>		W			
3		<p>Support development of innovative and sustainable family support services which meet the changing needs of our communities</p> <p>c. Partners will ensure that family support services are accessible to families across the Lochaber area including those in most need and residing in our rural communities (Requires reporting from AforC/CALA)</p>		R			
	1.	A Public Sector Partnership comprising Action for Children and the Care and Learning Alliance and is piloting a programme, in partnership with each other to deliver family support services. This service will provide a flexible community support service with a focus on supporting families at the time of need including weekends, school holidays and in the evenings; helping parents to build on their parenting capacity; enabling them to find their own solutions; while keeping the child at the centre.	AforC / CALA				

2.	The support service will be offered to parents on a voluntary basis. CALA and Action for Children will link with the families with volunteers helping the family to access community based services in their area.	AforC / CALA	R				
3.	Action for Children and CALA will provide an early intervention, universal service for children 0-8 covering the period Monday to Friday.	AforC/ CALA	R				
4.	Action for Children will provide a complimenting service to these children delivered in the evenings, weekends and during holiday periods.	AforC/ CALA	R				
5.	Families will be offered activities or supported to access community resources including leisure services.	AforC/ CALA	R				
6.	CALA and Action for Children will provide a network of volunteers to help parents access services and appointments required.	AforC / CALA	R				
7.	Maintain and develop Childcare services in Lochaber with specific attention to retention and recruitment of additional Childminders to increase capacity within several areas of Lochaber, mainly Acharacle, Mallaig and Roy Bridge. (update required)	HC C&L	R				
8.	Maintain the viability of Inverlochty Out of School Club holiday service by increasing the attendance figures. Advertise the service throughout all local primary schools using schoolbag drop and place advertising posters in all public service offices. (manager in post)	HC C&L	A				
9.	Investigate and develop as appropriate a family centre (progressing at Camaghael offices– staff starting to relocate in October 2016 (first phase)	HC C&L	A			L/ CC	
1.	Maintain effective regular monthly multi-agency meetings (LWA actively pursuing re-establishment of Violence against women forum)	LWA	A				
	d. Progress the implementation of the Violence against Women Strategy, with particular reference to joint provision of support to						

4	Encourage the adoption of healthier life choices by providing enhanced, locally based projects and initiatives	vulnerable families	<p>c. Partners will explore structures which consider local priorities for alcohol interventions</p> <p>d. Partners will promote the development of community capacity to support self-management of initiatives e.g intergenerational projects and support for older people</p> <p>f. Partners will work together to sustain and develop the Lochaber Streetwork project & other initiatives which promotes healthier lifestyle choices</p> <p>g. Partners will work together to sustain and improve services/ interventions which make communities feel safer through the reduction of alcohol and illegal drug consumption</p>	<p>1.</p> <p>2.</p> <p>1.</p> <p>2.</p> <p>3.</p> <p>4.</p> <p>1.</p> <p>2.</p> <p>3.</p> <p>4.</p>	<p>Maintain provision for drug and alcohol services within local community health services</p> <p>Link proactively with Highland wide drug and alcohol partnership network inc submission of an annual 'local activity action plan' by the District Partnership to HDAP – (a grant is available from HDAP to support local work) update required</p> <p>Maintain links with third sector through informal and contracting arrangements to support local projects</p> <p>Review the Streetwork project.</p> <p>Establish additional activity programmes for young people to engage with outdoor learning in holiday time.</p> <p>Youth work staff to support Integrated Children staff working with vulnerable young people.</p> <p>Establish Fusion-multi-activity nights - one per month 3 times per year in the Oct-March period.</p> <p>Encourage Pubwatch to continue engaging with secondary school pupils (update required)</p> <p>Continue education and promotion around alcohol and substance misuse including legal highs</p> <p>The development of a 'place of safety', with linked training for staff to have appropriate training to deal with situations such as 'sharps' etc.</p> <p>Seek more detailed analysis of alcohol-related admissions to the Belford including geographic area/age range etc.</p>	<p>NHSH</p> <p>LDP</p> <p>NHSH</p> <p>HLH/ HC</p> <p>HLH</p> <p>HLH/ HC</p> <p>HLH</p> <p>LDP</p> <p>PS/ HLH</p> <p>HC C&L/ NHS</p> <p>NHS</p>	<p>A</p> <p>B</p> <p>W</p> <p>A</p> <p>B</p> <p>A</p> <p>A</p> <p>A</p> <p>G</p> <p>R</p> <p>A</p> <p>A</p> <p>B</p>	<p></p> <p>YW</p> <p></p> <p></p> <p>YW</p> <p>YW</p> <p>YW</p> <p></p> <p>L/ YW</p> <p></p> <p></p>
---	--	---------------------	---	---	---	--	--	--

				HLH	A	
5.	Promote delivery of diversionary activities as and when required, via short-term working as necessary			Vol Org (?)	A	L/ CC
1.	h. Partners will support provision of Men's Shed type activities			NHSH / HC	G	
1.	b. Partners will support the establishment of a business case for future hospital provision on the Blar Mhor site			NHSH	A	CC
2.	c. Partners will be actively engaged in supporting the development of 21 st century care home provision in line with local need			NHSH	A	
1.	d. Partners will support the creation of action plans for medical evacuations from remote areas of Lochaber			NHSH / SAS/ SFRS	A/R	
2.	e. Partners will support the provision of local community medical facilities e.g. defibrillators, with related training			NHSH / SAS	A	
1.				NHSH / SAS	G	
2.				NHSH / SAS	G	CC
3.				SAS / SFRS	G	
4.				CSAT	A	CC
1.	f. Partners will support the sustaining and			HLH	G	YWI/ L/

<p>further development of quality facilities & services which encourage the uptake of regular exercise ie sporting facilities, active lifestyle classes etc</p>	<p>2. Investigate the opportunity to develop the old tennis courts at Lochaber Leisure Centre.</p> <p>3. Work with partners to increase awareness and encourage use of Lochaber Hydrotherapy Pool.</p> <p>4. Develop a long term plan for the provision of leisure facilities.</p> <p>5. Invest in training for existing and potential paid coaches/instructors to improve service delivery.</p> <p>6. Continue to develop the "You Time" initiative through leisure facilities, libraries and archive centres. Including outreach work to care facilities e.g. Invernevis House.</p> <p>7. Examine ways to open facilities at key times when young people need them. Eg Multi-activity events (Fusion Nights).</p> <p>8. Support the development of schemes that encourage people to become more active such as 'Step it up Highland' health walks.</p>	<p>HLH/ HC/L SA</p> <p>HLH/ N HS/H C/VA L</p> <p>HLH/ HC/L SA</p> <p>HLH/ HC/L SA</p> <p>HLH/ HC/L SA NHSH</p> <p>HLH</p> <p>SiUH</p>	<p>CC</p> <p>CC</p> <p>CC</p> <p>CC</p> <p>L</p> <p>L</p> <p>YW</p> <p>L</p>	<p>CC</p>
<p>g. Partners will support the sustaining and further development of transport initiatives/services which assist those less able/vulnerable in accessing facilities and services which encourage health and well-being</p>	<p>W</p>	<p>W</p>	<p>W</p>	<p>W</p>

			NHSH	A		
	1. Ensure adequate provision is in place for rescue/medical helicopter landings and refuelling systems	1. Continue to support partnership between NHS Highland and SAS to deliver appropriate facilities and medical support for air ambulance responses locally.	HC (D&I)	G	CC	
	i. support initiatives which incorporates green 'infrastructure' and active travel opportunities in new development	Through the planning process, ensure adequate provision is made for 'green space', and active travel (ref: planning supplementary guidance) – if developer contributions are paid in lieu, ensure proactive community engagement in regards to enhancement of existing facilities where appropriate. (process in place and working)	HC (D&I)	A		
		2. Promote the use of and development of local paths and nature trails to support healthier lifestyles and social inclusion.	HLH	A		
	f. Partners support the effective planning of resources and activity to meet the needs of communities	To support the development and implementation of a Lochaber District Community learning and development (CLD) plan	LDP			
		2. District Partnership to keep an overview of grant funding streams available to the District and how these are being spent. To be reported annually to the Partnership. (April)	HC	A		
6	Jointly promote opportunities which support active healthy lifestyles in older adults	1. Develop and ensure appropriate housing is available for older people	LEG	G		
		b. Develop and support initiatives aimed at combatting fuel poverty	Support the work of LEG - wood fuel project which improves access to and encourages the use of alternative fuels, free thermal surveys, energy advice & guidance and advice on renewable technologies (underway)	HC	A	
			3. Delivery of the Housing capital energy efficiency works	HC	A	
			4. Delivery of HEEPs (private sector insulation works programme)	HC	A	

	<p>c. Ensure appropriate mechanism are in place to give the timely availability of aids and adaptations</p> <p>d. Continue to develop and support preventative services</p> <p>e. Partners to work collaboratively to ensure appropriate information and advice are widely accessible and available on services and support to older adults.</p>	<p>1. Continue to support equipment store and care & repair provision</p> <p>2. Explore opportunities to improve provision of equipment, aids and adaptations through development of joint working initiatives with Locharber care & Repair</p> <p>1. Further development of supported self management and enablement services promoting ability for older people to remain independent and in their own communities as long as possible</p> <p>1. Joint working through Scottish 'Living it Up' programme to develop enhanced access to a range of services and information bringing together local volunteer groups; third sector and statutory bodies</p>	<p>NHSH</p> <p>NHSH</p> <p>NHSH</p> <p>NHSH /ALIS S/LG OWIT</p>	<p>A</p> <p>G</p> <p>A</p> <p>A</p>	<p></p> <p></p> <p>CC</p> <p>L/ CC</p>
<p>7 Jointly explore approaches to increase social capital and strengthen community empowerment to reduce health inequalities and increase health equity in Fort William</p>	<p>a. Partners will support the use of community development approaches to strengthen the capacity of health, community service and education agencies to address the social conditions that develop inequalities in health within Fort William and its environments</p> <p>b. Partners will support the use of community development approaches to address community identified issues related to health and wellbeing</p>	<p>1. Develop formal and informal partnerships between Council, NHS, community services, local agencies and education providers</p> <p>2. Broker and encourage stronger networks between health inequalities and community development practitioners to facilitate more exchange, sharing and coordination</p> <p>3. Map community strengths and assets</p> <p>1. Develop and implement a health equity seeding grant program</p> <p>2. Develop a monitoring and evaluation framework that identifies the key components of a health equity place-based model for replication in other areas of high health inequalities</p>	<p>HC/ NHSH / VAL</p> <p>HC/ NHSH / VAL</p> <p>HC/ NHSH/ VAL</p> <p>HC/ NHSH/ VAL</p> <p>HC/ NHSH / VAL</p>	<p>A</p> <p>A</p> <p>A</p> <p>G</p> <p>G</p>	<p></p> <p></p> <p>CC</p> <p></p> <p></p>

		3.	Development of health indicators which can be used by projects and agencies to measure the extent to which they are improving health and reducing health inequalities	HC/ NHS / VAL	G		
		4.	Make local recommendations for spend against appropriate funds ie HTSI fund for those with long term illness, D&A interventions funding etc.	NHS/ partner s	G		
c. Partners will support the development of individual skills to strengthen the capacity of community members and other stakeholders to plan and monitor health inequalities and community development efforts in Fort William		1.	Participatory action research capacity building training and support	NHS/ UHI/ VAL	G	L/ CC	
		2.	Support for photo-voice and other community cultural development projects	NHS/U HI and Partners (TBD)	A	CC	
		3.	Establishment of a citizen health and wellbeing forum	HC/ NHS / VAL	B	CC	
		4.	Partners to support the Plantation Community to develop a 'local action' plan	NHS/HC / HLH and Partners	A	CC	

October 2016 – Lochaber District Partnership

Ref: to LDP plan

Red warnings (no progress or no progress ever reported)

Mapping of voluntary sector clubs supporting young people inc. type of activity, where they are held, staffing (inc any relevant training/coaching qualifications etc)	HLH/ VAL	R	Is this piece of work still required or has it been done ?
Develop 2 projects per year to engage young people with Health services.	NHS/ HLH	R	Has work being done on this / is it still required ?
Establish system/structure to oversee the booking and community use of new school facilities.	HC/ HLH	R	Update required
Maintain and develop Childcare services in Lochaber with specific attention to retention and recruitment of additional Childminders to increase capacity within several areas of Lochaber, mainly Acharacle, Mallaig and Roy Bridge.	HC C&L	R	Progress report required
Encourage Pubwatch to continue engaging with secondary school pupils	LDP	R	Progress report required (what activity has been taking place)
A Public Sector Partnership comprising Action for Children and the Care and Learning Alliance and is piloting a programme, in partnership with each other to deliver family support services. This service will provide a flexible community support service with a focus on supporting families at the time of need including weekends, school holidays and in the evenings; helping parents to build on their parenting capacity; enabling them to find their own solutions; while keeping the child at the centre.	AforC / CALA	R	No progress reporting ever received – should this remain on plan
The support service will be offered to parents on a voluntary basis. CALA and Action for Children will link with the families with volunteers helping the family to access community based services in their area.	AforC / CALA	R	No progress reporting ever received – should this remain on plan
Action for Children and CALA will provide an early intervention, universal service for children 0-8 covering the period Monday to Friday.	AforC/ CALA	R	No progress reporting ever received – should this remain on plan

Action for Children will provide a complimenting service to these children delivered in the evenings, weekends and during holiday periods.	AforC/ CALA	R	No progress reporting ever received – should this remain on plan
Families will be offered activities or supported to access community resources including leisure services.	AforC/ CALA	R	No progress reporting ever received – should this remain on plan
CALA and Action for Children will provide a network of volunteers to help parents access services and appointments required.	AforC / CALA	R	No progress reporting ever received – should this remain on plan
Maintain and develop Childcare services in Lochaber with specific attention to retention and recruitment of additional Childminders to increase capacity within several areas of Lochaber, mainly Acharacle, Mallaig and Roy Bridge.	HC C&L	R	Progress report required (from Childcare & Early years partnership ?)

Blue warnings (progressed stalled)

Establishment of a local food/craft market in Fort William and / or social retail consortium enterprise	VAL	B	
Link proactively with Highland wide drug and alcohol partnership network inc submission of an annual 'local activity action plan' by the District Partnership to HDAP – (a grant is available from HDAP to support local work)	LDP	B	Update required
Review the Streetwork project.	HLH/ HC	B	Update required
Seek more detailed analysis of alcohol-related admissions to the Belford including geographic area/age range etc.	NHS	B	
Investigate the opportunity to develop the old tennis courts at Lochaber Leisure Centre.	HLH/ HC/L SA	B	Update required
Establishment of a citizen health and wellbeing forum	HC/ NHSH / VAL	B	Is this still required ?



BALLACHULISH

COMMUNITY ACTION PLAN

2016 – 2021

CONTENTS

INTRODUCTION 1

OUR COMMUNITY NOW:
PROFILE 2

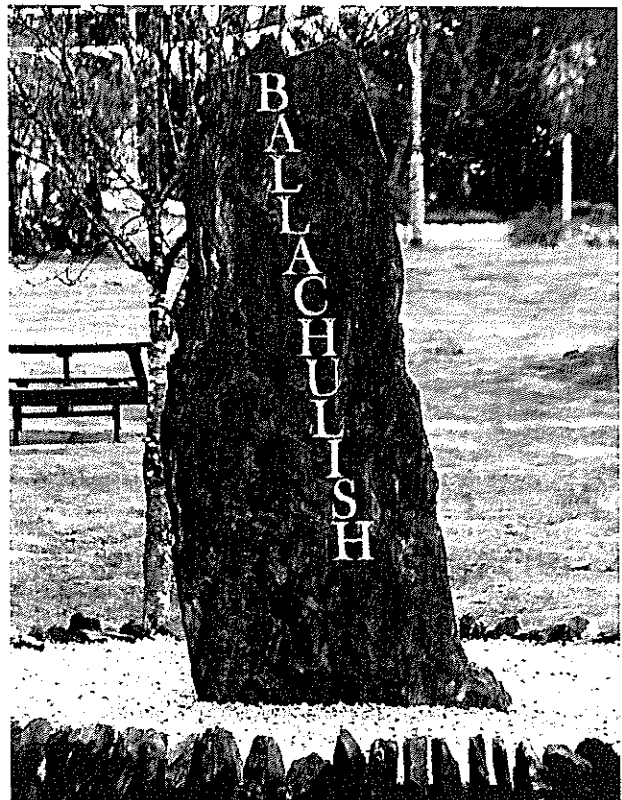
OUR COMMUNITY NOW:
LIKES 4

OUR COMMUNITY NOW:
DISLIKES 5

VISION FOR THE FUTURE 6

MAIN STRATEGIES
AND PRIORITIES 7

ACTION 9



INTRODUCTION



173
COMMUNITY
VIEWS SURVEY
FORMS WERE
RETURNED
FROM OUR 340
HOUSES

24 STAKEHOLDER
MEETINGS AND
INTERVIEWS WERE
HELD

OVER 200 PEOPLE
ATTENDED THE
COMMUNITY FUTURES
EVENT

BALLACHULISH COMMUNITY ACTION PLAN

This Community Action Plan summarises community views about:

- Ballachulish now
- the vision for the future of Ballachulish
- the issues that matter most to the community
- our priorities for projects and action.

The plan will be our guide for what we - as a community - try to make happen over the next 5 years.

WORKING TOGETHER

The preparation of the plan has been organised by the Ballachulish Community Forum – a grouping of local organisations led by the Ballachulish Community Council and Ballachulish Community Association (SCIO). We have been supported in carrying out the work by the Small Town and Rural Development Group.

This plan will help us to develop our joint priority projects and make representation on behalf of the community on the issues that matter most to our residents, organisations and local businesses.

LOCAL PEOPLE HAVE THEIR SAY

The Action Plan has been informed by extensive community engagement carried out over a six month period from November 2015 to April 2016.

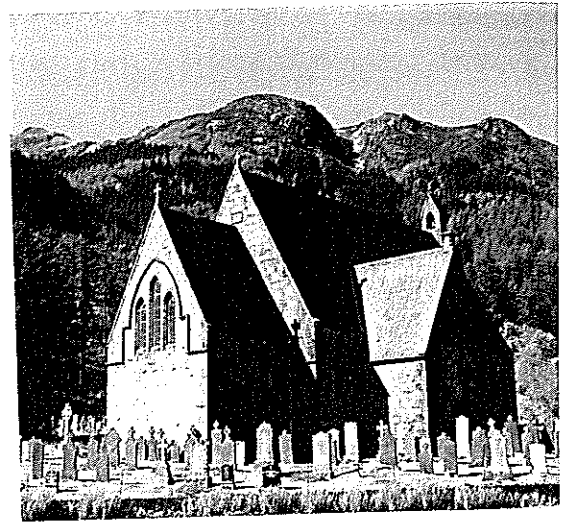
The process involved:

- stakeholder interviews and meetings - with community organisations, schools, service providers, local businesses and public agencies;
- carrying out a community views survey of all households;
- preparing a community profile detailing facts and figures about the community;
- organising a Community Futures Event.



OUR COMMUNITY NOW

We have summarised below the main facts and figures from the Community Profile and some of the views from the Community Views Survey. Full copies of these reports are available from the steering group on request.



BALLACHULISH COMMUNITY PROFILE 2016 SUMMARY

LOCATION

Ballachulish Community Council area includes Ballachulish village and Glenachulish and the cottages at Lettermore. Ballachulish village lies just off the A82 about 1 mile north of Glencoe Village and on the south side of Loch Leven. It is in the South Lochaber area of Highland Council.

POPULATION

There are now around 820 people living in the area – significantly up from 760 in the 2011 Census. The Census showed that the population is relatively older than the profile for Highland Council or Scotland and with proportionately less people of a working age.

HOUSING

- In total there are 370 houses with around 31 of those listed as holiday or second homes.
- There is a relatively high waiting list for social housing compared with other communities in South Lochaber with the largest demand being for 1 bedroom houses.
- 12.9% of the households are occupied by one person of 75 or over compared with 7.7% for Highland and 7.7% for Scotland.

LOCAL ECONOMY

Features of the local economy include:

- High rates of economic activity, part time work and self employment compared

with Highland Council area and Scotland

- Some large local employers including Abbeyfield, Geo-Rope Ltd, Isles of Glencoe Hotel, The Coop, and Chisholms.
- A relatively high percentage of people working or studying from home (18.9%) compared to (14.9%) for the Highlands and 11.3% for Scotland.
- High levels of employment in accommodation and food service activities (16.3%) in Ballachulish compared to Highland (9.1%) and Scotland (6.3%)
- There is a useful list of local businesses on the Community Council website <http://www.ballachulish.org.uk/see-do/local-information>

SCHOOLS AND EDUCATION

- Ballachulish Primary School and Nursery
- Kinlochleven High School
- West Highland College Learning Centre (in the Kinlochleven Campus)

HEALTH AND CARE

Facilities and Services include:

- Ballachulish Medical Centre
- Community Nurses
- Hospital and Acute services in Fort William and Inverness
- Abbeyfield residential care home – which also provides day care and sheltered housing and a lunch club
- Lochaber Care and Repair
- Car Scheme available for people with transport problems
- Step it Up Health Walks from Ballachulish TIC twice a week.

COMMUNITY AND RECREATIONAL

Community Facilities

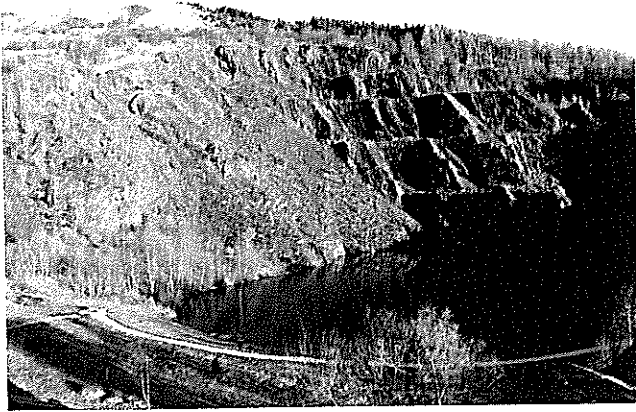
- Ballachulish Village Hall, Church Hall, Shinty Pavilion, Primary School
- The village hall is the main community facility for more details visit: <http://www.ballachulish.co.uk/>

Churches

- St. John's Episcopal Church, St. Mun's Catholic Church, St. Munda's Church of Scotland

Community Groups

- Ballachulish Community Council, Ballachulish Community Company, Ballachulish Community Association SCIO, Ballachulish Patient Participation Group, Lochaber Car Scheme
- Ballachulish Camanachd Association (Shinty Club), Ballachulish Football Club, South Lochaber Bowmen, Glencoe Boat Club, Ballachulish Playparks Committee, Walking Group, Ballachulish Golf Club
- 4th Lochaber Scouts (Beavers, Cubs and Scouts), Playgroup (0 – preschool), Ballachulish Primary School PTA
- Scottish Country Dancing and other fitness and leisure activities.



Business Groups

- Discover Glencoe
- There is also a list of outdoor activity providers on the Community Council website <http://www.ballachulish.org.uk/see-do/local-activities/>

Parks and Play Areas

- Jubilee Park Shinty Pitch, Jubilee Play Park, West End Play Park, and other play areas at the school and Isles of Glencoe Hotel.

Community Events

- Fireworks – special event in the Quarry
- Christmas Market and Christmas Parties
- Lantern Making and Lantern Parade at New Year
- Boat Club Regatta
- Duck Race and Craft Fair
- Autumn Festival planned for 2016 by Discover Glencoe

ENVIRONMENT

Designated sites

- Ben Nevis and Glencoe National Scenic Area (NSA); Carnach Wood (SSSI); St John's Wood (SSSI); The Glen Etive and Glen Fyne Special Protected Area; Lochaber Geopark (the Quarry is included within this wider Geopark area).

Paths and Access

There are a number of local walks and cycle paths in the area. The main ones are recognised as core paths for Ballachulish and Glencoe and include St. John's – Glenachulish, Ballachulish Quarry, Ballachulish Quarry

– Brecklet, Visitor Centre – Harbour and the Eilean Munde viewpoint, Albert Road – Harbour, Kentallen – Ballachulish Bridge.

Local Munros

There are two Munros directly accessible from Glenachulish – Sgorr Dhearg and Sgorr Dhonuill. In addition all the hills of Glencoe and Glen Etive are within easy reach of the community making it a great destination for hill climbers.

Forestry and Hydro Schemes

Forest Enterprise own Brecklet and Glenachulish forests - commercial forests planted around 50 years ago and which will be harvested over the next 25 years. Rivers in both forests offer opportunities for Hydro Schemes – one is being developed by Green Highland Renewables in Glenachulish, while the Ballachulish Community Company is developing proposals for a Hydro Scheme in Brecklet Forest on the River Laroch.

Flora and Fauna

Wildlife includes Eagles, Otters, Deer, Pine Martens, Red Squirrels, Wild Goats, Minke Whales, Dolphins, Porpoises and Seals.

HERITAGE

Quarries and slate

The quarries at Ballachulish are a very large part of the history of our village and community. Slate was first commercially quarried here in 1693 (the year after the Glencoe Massacre) with work continuing until the quarries finally closed in 1955. The Quarries, Boat Sheds and Arch are physical reminders of these times – as are the harbours and headlands which were shaped using surplus slate from the quarries.

Trains, Ferries and The Bridge

The history of the community is also closely linked with transport. For centuries ferries crossed the Ballachulish narrows before the Bridge was built in 1975. The railway arrived in 1903 to serve the quarries and provide a connection to Oban and the Central Belt. The railway closed - as so many did - in 1966.

Burial Islands

Eilean Munde (St Munda's or St. Munn's Island) in Loch Leven is the burial place of the MacDonald clan of Glencoe. The island burial place was also shared by the Camerons of Callart, the Stewarts of Ballachulish and Appin and other local families.

Ballachulish Timeline

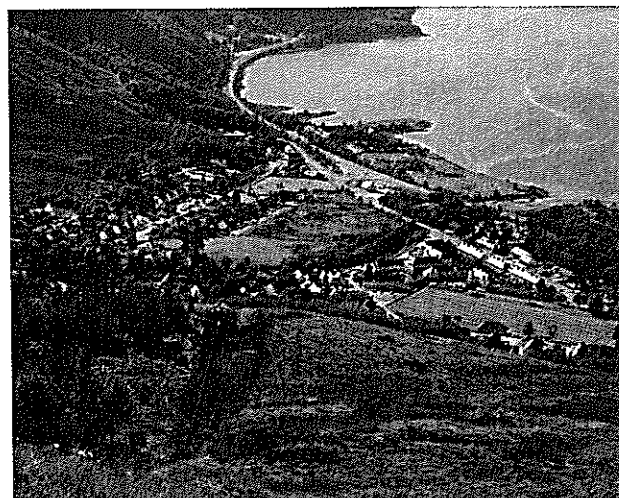
There is an excellent timeline tracing the history of Ballachulish through the ages on the Community Council's website <http://www.ballachulish.org.uk/ballachulish-timeline/>

OUR COMMUNITY NOW: LIKES



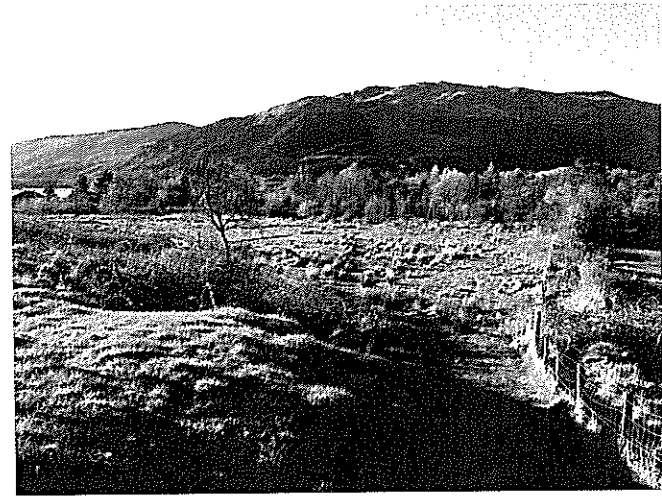
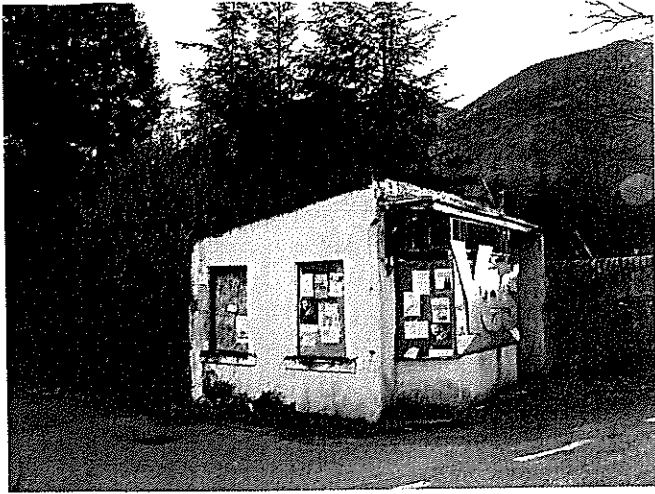
COMMUNITY VIEWS SURVEY

Community spirit and community activities	74%
Scenery and access to the outdoors	70%
Character of village	57%
Local amenities	44%
Location	43%
Community Events	19%
Access to Services	18%
Village Environment	12%

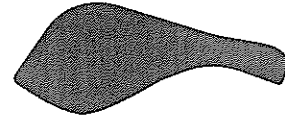


WHAT PEOPLE SAID:

- "We love the community feeling and friendliness"
- "The community getting together to look after the quarry, fireworks, Christmas lights, and village appearance and hydro scheme"
- "The range of after school activities available for primary school"
- "Plenty of activities for the fit and healthy e.g. walking, zumba, country dancing, shinty"
- "The great freedom our children have to grow up in the village"
- "Situated in one of the most scenic and stunning locations in the world"
- "Access for walking, cycling, and kayaking"
- "I like the walks – Brecklet, Quarry, Shore and Point."
- "Proximity to outdoor facilities – skiing, sailing, climbing, mountain biking"
- "The quarry is magnificent"
- "It's a peaceful village, not too busy, not too quiet"
- "It feels safe for kids"
- "It has a rich history of slate mining"
- "We are lucky to have good amenities for such a small village"
- "Good tourism activity providers to get people out on the loch and hills"
- "The hall is brilliant, a fantastic space to rent for special occasions and is affordable"
- "The availability of larger towns/cities without too much bother, then return to peace and quiet"
- "Local events such as fireworks displays and New Year festivities are outstanding"
- "Abbeyfield Centre gives the village a positive balance, with elderly looked after in a quality environment"
- "Appreciate the good school and services"
- "It is an energetic community council"
- "Active churches"
- "Lots of effort has gone towards improving the village and keeping it tidy"



OUR COMMUNITY NOW: DISLIKES



COMMUNITY VIEWS SURVEY

Lack of indoor facilities, activities, events, and hospitality	49%
Village Environment	43%
Access to Services	30%
Parking, traffic, roads	17%
Housing	16%
Antisocial behaviour & loss of community spirit	8%

WHAT PEOPLE SAID:

- Lack of indoor sports facility – gym sports hall”
- “Lack of cultural events in the Hall in the evening”
- “Not much activities in the evening, have to travel for exercise classes”
- “There is a serious lack of youth activities or hangouts”
- “No real outdoor space with a place to shelter for young people”
- “Lack of knowing what’s on and where. No central, accessible updated point”
- “Village is overgrown now with scrub, random trees, bushes – this extends out of the village obliterating views of the loch”
- “Footpath by the river towards the underpass is eroding and getting very unsafe”.
- “Should be better wheelchair and buggy access to the quarry”
- “Invasive weeds choking natural vegetation”
- “Old shop on West Laroch is an eyesore”
- “Annoyed that the historic boat sheds have been left to rot”
- “Bus timetables confusing”
- “Poor transport links to Oban”
- “Absence of recycling depot”
- “School building is outdated and no longer fit for purpose”
- “RBS closing down was a vital service especially for our elderly population”
- “Mobile phone signal is often poor” “Slow wifi connection”
- “The lack of an evening surgery at Medical Centre”
- “Ballachulish roads are flooded when heavy rain falls – drains need lifted in Croft Road”
- “Speeding at playpark area” “Speeding traffic along Albert Road”
- “Lack of pavements around swing park/West Laroch and bottom end of the village and School Brae”
- “Hardly any affordable housing for first time buyers and if by chance there are, they are often bought up and used for holiday homes”
- “Lack of local authority housing and when houses do come up a lot don’t go to locals”
- “Not enough smaller council houses to allow single people and older couples to move into and free up 2/3 bed houses for families”
- “Lack of housing for young people”
- “Not enough police patrols”

BALLACHULISH 2025 OUR VISION FOR THE FUTURE

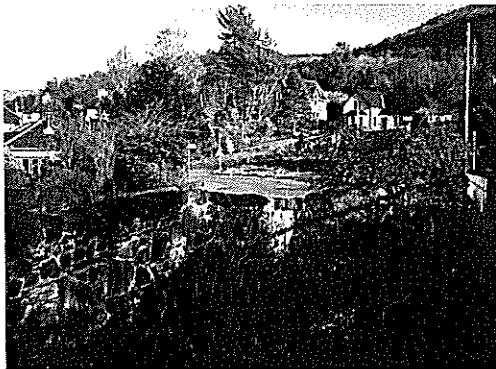
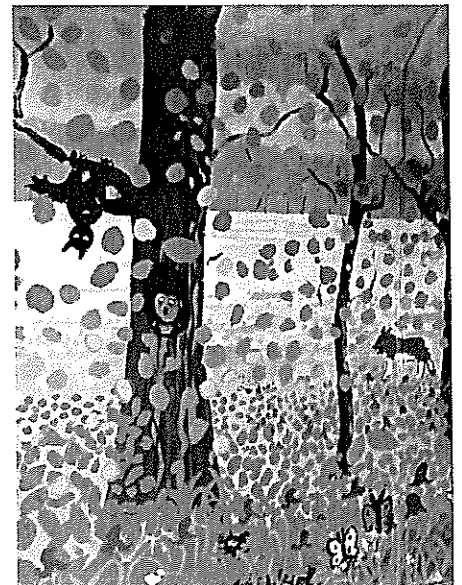
This statement has been prepared using local residents and organisations answers to the question - how would you like to imagine Ballachulish in 2025?

A community that has influence over its natural resources – rivers, forests, lochs and open spaces – and is able to make best use of them for the community's sustainable future.

A place that has made the most of its heritage – celebrating, interpreting, bringing it alive – to give the community a strong sense of place and contribute to tourism and the local economy.

A social, economic and service hub for South Lochaber – known for the quality and diversity of its local businesses, services and hospitality.

A community with affordable housing and a good mix of tenure and type of housing so we can encourage a balanced community of all ages and stages in life.



A place that has made the most of the outdoor environment – for residents and tourists alike (activities for young people, local walks, cycling, mountain biking, sailing, kayaking and fishing)

A characterful village – clean, green and attractive, safe, peaceful and lively!

MAIN STRATEGIES AND PRIORITIES

These are the main strategies and priorities the community will work towards achieving over the next 5 years in partnership with public agencies and other supporters.



THEME 1: COMMUNITY AND RECREATIONAL FACILITIES AND ACTIVITIES

The village hall has been improved over the last few years and its potential as a community hub is beginning to be realised. However it could be improved further with a full catering kitchen, more storage space and a variety of room sizes. This was a top priority for many people so that there could be more activities and functions in the community. Demand for more activities often focused on the needs of young people but there was also recognition that there was not enough for the older residents in Ballachulish. People were keen to see a rekindling of arts and cultural activities as well as maintaining and developing community events.

The community also identified a need to develop outdoor facilities – with a desire to see play areas improved and improvements to the Shinty Pitch and pavilion.

Main priorities:

- Develop the village hall
- Activities and facilities for young people
- Activities and services for older people
- Improve play and sports areas
- More community events and arts and cultural activities



THEME 2: ENVIRONMENT AND HERITAGE

Ballachulish is well placed at the gateway to Glen Coe and beside Loch Leven to capitalise on its natural assets. There was seen to be a real opportunity to make the most of local forests, rivers, lochs, and hills to develop visitor activities and help build a sustainable community. There is the potential to develop and promote a local paths network in and around the community, as well as mountain bike trails in Brecklet Forest. The loch and waterfront was also thought to be underutilised with greater scope for promoting sailing, kayaking, fishing and other water sports and providing facilities to encourage use by locals and visitors.

There is also the unique industrial heritage of slate quarrying as well as other older tales to highlight and celebrate.

Main priorities:

- Develop and promote local heritage
- Develop and promote a local paths network and mountain biking trails
- Make more of the loch and waterfront
- Develop community involvement in local forests
- Make the most of the National Scenic Area

THEME 3: ACCESS TO SERVICES AND TRANSPORT

Ballachulish has a great primary school but its location means it is difficult to access safely on foot or by car. In general there is concern about speeding traffic in and around the community and a need for traffic calming with some arguing for a 20mph limit throughout the village.

It is hoped that a new school for the wider area might soon be built and that it will be in or close to Ballachulish. It would be good if a new school might also include 'wrap around' childcare as there was thought to be a shortage of childcare in the community.

Ballachulish is fortunate to have a good Medical Centre and related services and an Abbeyfield Care Home but these services need protected and developed. Plans for a defibrillator and a First Response service should be supported. The community is keen to maintain and improve links to hospitals in Fort William and Inverness. There is a desire to maintain a General Rural Hospital in Fort William

Improvements to public transport that people would like to see included the need for better integration of bus and train times – to improve connections to Inverness (e.g. for Raigmore Hospital) and to Glasgow.

Main priorities:

- Improve access to the existing primary school and make plans for a new school
- Protect and improve health and care services
- Improve roads and traffic
- Improve transport
- Develop childcare opportunities

THEME 4: LOCAL ECONOMY AND TOURISM

The community is working to develop its own Hydro Scheme and this has broad support locally as it is seen as creating a local income stream for community initiatives.

In general many felt that Ballachulish was well located to be a hub for the wider South Lochaber area and wanted to take measures that would help develop this potential. Part of its role as a hub is to be able to offer employment and it was thought that it was important to support existing businesses and encourage new businesses by providing the right infrastructure and services.

It was widely recognised that Ballachulish had a lot to offer visitors with its location between mountains and lochs and with its interesting history of slate quarrying – Theme 2 above explores what is needed to make the most of the local environment and heritage assets – and doing so will undoubtedly have a positive impact on the local economy.

Main priorities:

- Develop the Hydro Scheme
- Develop Ballachulish as an area hub for communities and visitors
- Support existing businesses and encourage new businesses
- Continue to roll out and improve super fast broadband and introduce public wi-fi
- Make the most of the environment and heritage (see Theme 2)

THEME 5: HOUSING AND VILLAGE ENHANCEMENT

There is a strong desire to see more low cost housing to rent and purchase for people wanting to live and work in Ballachulish. Lack of small affordable housing can mean that people are often unable to take or keep jobs in the community or to downsize when they would like.

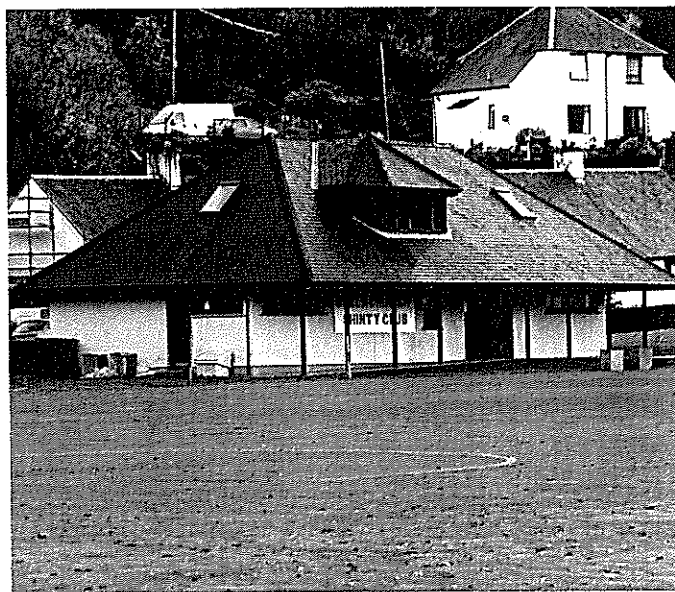
High fuel costs also make it important to look at ways of improving energy efficiency of existing properties. In general the community would like to do more to become 'greener' – developing local produce through community allotments and developing better facilities for recycling.

The community is keen to continue to enhance the village. This would include looking at ways of improving and making best use of open spaces in and around the village e.g. managing scrub land and developing allotments and spaces for informal recreation.

Main priorities:

- Develop more affordable housing
- Improve existing housing stock
- Develop Open Spaces – community allotments
- Better recycling facilities
- Village enhancement



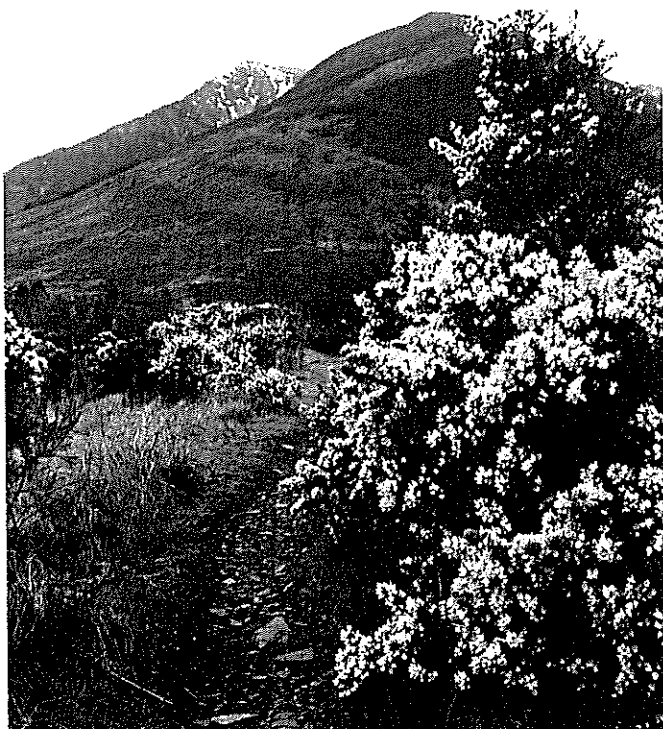


THEME 1: COMMUNITY AND RECREATIONAL FACILITIES AND ACTIVITIES

Priority	<p>Develop the village hall</p> <ul style="list-style-type: none"> • Commission a feasibility study to look at developing the hall to cater for more activities and functions. • Seek funding for the further improvement of the hall.
Action by	<i>Ballachulish Community Association (BCA) working with local hospitality sector and other community groups.</i>
Priority	<p>Activities and facilities for young people</p> <ul style="list-style-type: none"> • Work with local young people to identify and develop their priorities for facilities and activities in Ballachulish • Support the Boat Club to establish sailing lessons again • Help Scouts establish Explorer Group • Explore potential to re-establish 2 Lochs Youth Club
Action by	<i>BCA, Highlife, Churches, Boat Club, Scouts, Buzz Bus</i>
Priority	<p>Activities and services for older people</p> <ul style="list-style-type: none"> • Look at potential to establish a Befriending Group for older vulnerable people in Ballachulish – particularly those living on their own • Work with older people to establish additional activities and facilities in Ballachulish
Action by	<i>BCA, Ballachulish Community Council (BCC), Abbeyfield</i>
Priority	<p>Improve play and sports areas</p> <ul style="list-style-type: none"> • Improve and repair existing facilities in play parks • Investigate the potential to develop a skate board park • Reinstate old Donkey Track for bikes • Support the improvement of the Shinty Pitch and Pavilion.
Action by	<i>Play Park Committee, Shinty Club, Isles of Glencoe Hotel, Schools, parents and children</i>
Priority	<p>More community events and arts and cultural activities</p> <ul style="list-style-type: none"> • Support existing local events • Support Discover Glencoe's initiative for an Autumn Festival • Look at opportunities for more arts and cultural activities and events in Ballachulish
Action by	<i>BCA, BCC, Highlife, West Highland College, Discover Glencoe and others</i>

THEME 2: ENVIRONMENT AND HERITAGE

Priority	<p>Develop and promote local heritage</p> <ul style="list-style-type: none"> • Establish local heritage group to develop proposals for enhancing and promoting local heritage. • This should include looking at making more of a feature of the Quarry and developing a Heritage Museum. • Other aspects should also be considered e.g. Heritage Trail around the village
Action by	<i>Ballachulish Community Council, Ballachulish Community Company, Ballachulish Community Association – perhaps through establishing a joint Ballachulish Heritage Action Group?</i>
Priority	<p>Develop and promote a local paths network and mountain biking trails</p> <ul style="list-style-type: none"> • Research how other communities have developed and promoted their paths networks and mountain bike trails • Aim to establish, sign and promote a local paths network • Work with Forestry Enterprise to develop mountain bike trails through local forests
Action by	<i>Establish new Ballachulish Environmental Group which would also focus on village enhancement, developing open spaces, allotments etc. working with BCC, Forest Enterprise, National Trust, local landowners, Highland Council, Highlands & Islands Enterprise</i>
Priority	<p>Make more of the loch and waterfront</p> <ul style="list-style-type: none"> • Investigate the potential for developing more facilities e.g. pontoons, moorings, on shore services, that would encourage visitors interested in water based activities. • Develop and support proposals.
Action by	<i>Boat Club, Ballachulish Community Company, Ballachulish Community Association, local landowners, local activity providers and hotels, Highlands and Islands Enterprise, Highland Council</i>
Priority	<p>Develop community involvement in local forests</p> <ul style="list-style-type: none"> • Make representation on the future management and use of the forests around Ballachulish and encourage development which would benefit the community e.g. land for recreation, housing and work.
Action by	<i>Ballachulish Community Council, Ballachulish Community Company, Ballachulish Community Association, Forestry Commission Scotland, Highland Council</i>
Priority	<p>Make the most of the National Scenic Area</p> <ul style="list-style-type: none"> • Work with other communities to develop an action plan for the NSA.
Action by	<i>Ballachulish Community Council</i>



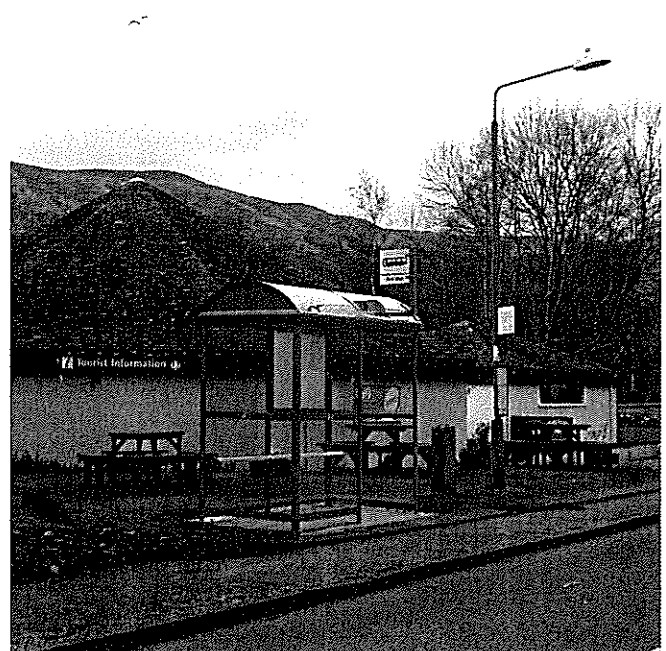
THEME 3: ACCESS TO SERVICES AND TRANSPORT

Priority	<p>Improved access to existing Primary School and plans for a new school</p> <ul style="list-style-type: none"> • Support Primary School's Travel Plan proposals, improve access up School Brae; improve Bridge over the River Laroch; try to address the issue of the old derelict shop • Lobby for any future new primary school to be located in or near to Ballachulish and identify potential suitable site.
Action by	<i>Ballachulish Primary School, Highland Council, Ballachulish Community Council</i>
Priority	<p>Protect and improve health and care services</p> <ul style="list-style-type: none"> • Support proposals for a First Response team and Defibrillators for Ballachulish • Protect care and health services available through Abbeyfield • Explore the potential for an evening surgery at the Medical Centre • Look at the need for a new custom built building for the Medical Centre • Continue to lobby for Rural General Hospital Services to be retained in Fort William • Make sure public transport improvements help with access to any new hospital in the Fort William area, and Raigmore in Inverness.
Action by	<i>Ballachulish Community Council, Ballachulish Medical Centre, Scottish Ambulance Service, Abbeyfield, Highland Council, NHS Highland, South Lochaber Partnership</i>
Priority	<p>Improve roads and traffic</p> <ul style="list-style-type: none"> • Investigate how traffic calming measures could make the village safer e.g. 20 mph speed limits – and implement proposals • Support and encourage proposals for the continued upgrade of the A82
Action by	<i>Highland Council, Ballachulish Community Council, Transport Scotland, BEAR</i>
Priority	<p>Improve transport</p> <ul style="list-style-type: none"> • Continue to lobby for more integrated public transport that would link local buses to Fort William with onward travel by rail or bus. • Ask for the deployment of smaller buses on local services. • Consider options for alternative services e.g. dial a bus.
Action by	<i>HiTrans, Bus operators, Ballachulish Community Council, Highland Council</i>
Priority	<p>Develop childcare opportunities</p> <ul style="list-style-type: none"> • Investigate need for childcare - perhaps including other nearby communities. • Look at the opportunity for including childcare provision in plans for any new school
Action by	<i>Local parents and carers, Highland Council, Ballachulish Community Council, Primary School, PTA</i>



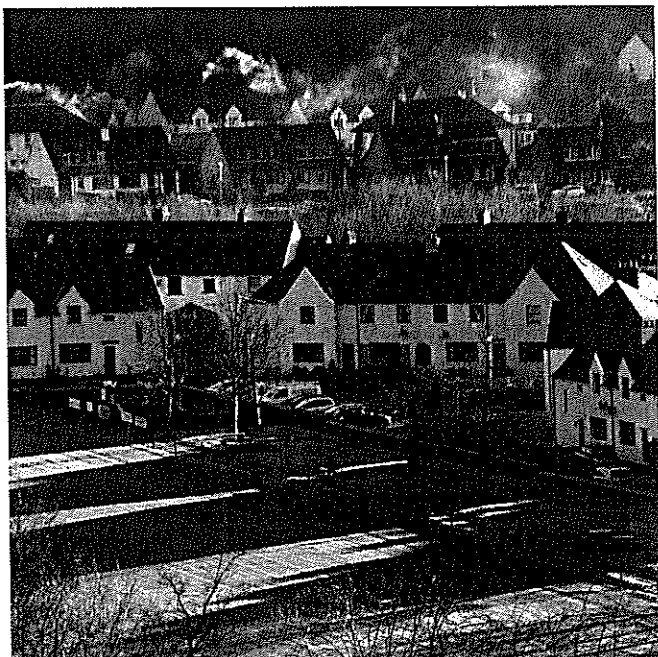
THEME 4: LOCAL ECONOMY & TOURISM

Priority	<p>Develop the Hydro Scheme(s)</p> <ul style="list-style-type: none"> • Continue to develop and support the community hydro scheme on the River Laroeh • Secure shared community ownership in the other local Hydro Scheme being developed by Green Highland Renewables.
Action by	<i>Ballachulish Community Company, Forestry Enterprise, Green Highland Renewables.</i>
Priority	<p>Develop Ballachulish as a hub for the area for local communities and visitors</p> <ul style="list-style-type: none"> • Continue to develop working partnerships between community groups, businesses and service providers to identify and agree projects that will contribute to Ballachulish becoming more of a hub for locals and visitors. • Ideas already suggested include public wi-fi, improved signage, entrance features, improved parking, improved toilets, noticeboards, developing a Walkers Welcome initiative. • Joint and individual work to implement the agreed proposals.
Action by	<i>Local businesses, Discover Glencoe, Ballachulish Community Council, Ballachulish Community Association, Highland Council, Forest Enterprise Scotland, National Trust etc</i>
Priority	<p>Support existing businesses and encourage new businesses</p> <ul style="list-style-type: none"> • Review and support opportunities for expansion of existing local businesses • Explore the potential to develop workspace/IT facilities for existing and new businesses • Work with tourism businesses (hospitality and activity providers) and support plans for development to grow and extend tourism potential in and around Ballachulish
Action by	<i>Local businesses, Ballachulish Community Council, Discover Glencoe, Highland Council, Highlands & Islands Enterprise</i>
Priority	<p>Continue to improve telecommunications</p> <p>Continue to upgrade superfast broadband, introduce public wi-fi, and improve mobile phone signals – all important for supporting tourism and the local economy and Ballachulish’s role as a hub for residents, businesses and visitors.</p>
Action by	<i>BT, Highland Council, Scottish Government, other telecommunication providers</i>
Priority	<p>Make the most of the environment and heritage (see Theme 2)</p> <ul style="list-style-type: none"> • Take action to implement the Environmental and Heritage priorities in this Action Plan so that these assets benefit the local economy.



THEME 5: HOUSING AND VILLAGE ENVIRONMENT

Priority	<p>Develop more affordable housing</p> <ul style="list-style-type: none"> • Make representation to Highland Council to ensure there are areas for housing in the Local Development Plan • Carry out a local housing needs survey • Work with Highland Council and Housing Associations to identify and develop sites • Make representation to Forest Enterprise to create a forest crofts initiative or similar on Forestry land
Action by	<i>Ballachulish Community Council, Highland Council, Lochaber Housing Association, Forest Enterprise Scotland, Highland Small Communities Housing Trust</i>
Priority	<p>Improve existing housing stock</p> <ul style="list-style-type: none"> • Work with Highland Council and Lochaber Housing Association to continue to upgrade housing stock with emphasis on energy efficiency and introducing renewable energy systems.
Action by	<i>Ballachulish Community Council, Highland Council, Lochaber Housing Association, Lochaber Environmental Group</i>
Priority	<p>Develop Open Spaces – community allotments</p> <ul style="list-style-type: none"> • Identify open spaces that could be improved and work with local land owners to agree their use for community benefit • Research how other communities have established allotments, eco parks, informal recreation areas • Design proposals for use (e.g. commission design and feasibility studies). • Raise funds to carry out improvements
Action by	<i>Ballachulish Community Council, Ballachulish Community Association, Ballachulish Community Company – through the formation of a new Environmental Action Group – and working with private landowners, primary school etc.</i>
Priority	<p>Better recycling facilities</p> <ul style="list-style-type: none"> • Develop and lobby for proposals for improving recycling facilities • Work with partners to implement proposal
Action by	<i>Ballachulish Community Council, Highland Council, Lochaber Environmental Group.</i>
Priority	<p>Village enhancement</p> <ul style="list-style-type: none"> • Continue good work to improve the village and make it look attractive • Investigate and implement ways of reducing invasive species • Look at ways of managing scrub land in and around the village.
Action by	<i>Ballachulish Community Council and other local groups through the proposed new Environmental Action Group</i>



BALLACHULISH COMMUNITY ACTION PLAN 2016 - 2021

This Community Action Plan sets out the vision, main themes and priorities for the development of Ballachulish over the next 5 years as determined by the community through an extensive process of community engagement carried out over a six month period from November 2015 – April 2016.

The priorities in this action plan will be taken forward by our local community groups working with a range of public, private and third sector partners.

ACKNOWLEDGEMENTS

Funding for the preparation of this Action Plan was provided by Forestry Commission Scotland, Big Lottery Fund and a number of local groups.

Ballachulish Community Forum was supported in carrying out the community engagement work and preparing this Community Action Plan by the Small Town and Rural Development Group.

If you would like to get involved or for further information please contact:

Ballachulish Community Council

Name: Kevin Smith (Chair)
E-mail: ksmithbcc@btconnect.com

Ballachulish Community Association

Name: Rob Malpas
E-mail: rileyrob@btinternet.com

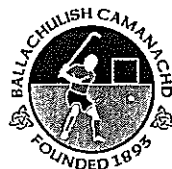
Name: Jo Watt
Email: gatsbycass@gmail.com
Telephone: 01855 811649

Ballachulish Community Company

Name: Jimmy Waugh
E-mail: jamesjimmywaugh@aol.com
Telephone: 01855 811540

You can also contact us at:
Ballachulish Village Hall, East Pier
Road, Ballachulish, PH49 4LE

This Community Action Plan is also available online at
<http://www.ballachulish.org.uk/our-community/community-action-plan/>



BALLACHULISH
COMMUNITY COUNCIL



LOTTERY FUNDED



Forestry Commission Scotland
Coimisean na Coilltearachd Alba



STAR
DEVELOPMENT
GROUP



SOUTH LOCHABER
LOCHABER COMMUNITY PLANNING PARTNERSHIP
COMMUNITY CONSULTATION 2016



Content Page

Page No.

Section One

Key Findings	2
Affordable Housing	2
Connectivity	2
Infrastructure	2
Community Support/Communication	2
Natural Assets	2
Lochaber Community Development Plan	3

Section Two

Introduction	3
Methodology	3
Promotion of the Consultation	3
Venues, Dates and Times	3
Market Place Event	3

Section Three

Ballachulish	4
Kinlochleven	6
Glencoe and Glen Etive	7
Duror and Kentallen	9
Nether Lochaber	10

Section 4

Next Steps	11
------------	----

SECTION ONE

Key Findings

Affordable Housing

In four of the five communities there was a recognised need for affordable housing, and that the lack of affordable housing was having an impact on development. A lack of affordable housing was seen as a contributing factor to young people leaving the area, but more significantly in them not returning later.

Homes for single people were seen to be particularly lacking within South Lochaber Communities. The number of holiday homes or holiday lets and a lack of accessible land were seen as contributing factors to the lack of affordable housing.

Connectivity

Poor quality, unreliable internet facilities was highlighted throughout South Lochaber.

The use of high quality broadband was identified as being of benefit to both social and economic activity within communities. Potential created by consistent high quality broadband included:

- Increased competitiveness for local businesses
- Tele-working Opportunities
- Community Hubs providing training for local people and income for existing communities building
- Electronic surgeries from local doctor surgeries to specialist within NHS Highland

Infrastructure

Poor quality roads and declining road maintenance were noted in all communities. There was an acknowledgement that limited finance within the public sector were influencing this but roads were inadequate, particularly in an area so dependant on road travel to access services and being active within communities. The poor quality of the A82 was particularly noted as impacting on local businesses, visitors to the area and becoming increasingly unsafe for users in general. There was anxiety that a perceived reduction in road maintenance will only exasperate the decline in road quality.

Community Support/Communication

There was awareness that there were vulnerable people within the communities that were 'hard to reach' and there was value in local befriending services of some kind. Each community had examples of support for neighbours and vulnerable people but that there was a need to build on these. More opportunities for social gatherings and interest groups was identified, but the reliance on a limited number of volunteers already doing a lot within communities limit the potential to realise this.

Discussion with VAL staff about community groups, in particular village halls and learning opportunities, identified a need for more communication between villages. In particular, there was a recognised opportunity for village halls to work together to attract touring companies and develop social opportunities within Lochaber.

Natural Assets

There was a variety of comments regarding safeguarding and maximising the natural asset of the area for local communities as well as for the tourism sector. In particular:

- Safe, Circular walking and cycling routes near village
- Quality interpretation at a community level
- A need to develop specialist, locally branded food and craft products
- Safeguard and encouraging crofting
- Encouraging gardening as a way of bringing community together

Lochaber Community Development Plan

There was a general lack of awareness of the Lochaber community Development Plan, and how individuals and small communities can influence the community planning process. There was confusion on who was responsible for leading and developing the Lochaber Community Development Plan and how the plan relates to Statutory Planning Documents.

SECTION TWO

Introduction

Lochaber's Community Planning Partnership consulted widely to produce the Community Plan 2012- 2016; the plan is reviewed and updated on a regular basis.

This report reflects the community consultations which Voluntary Action Lochaber undertook across South Lochaber during February and March 2016.

The findings from this report will be fed back to the Lochaber Community Planning Partnership and incorporated in the next updated version of the plan.

Methodology

The consultations which took the form of informal facilitated discussions were based on the Scottish Government's 5 Strategic Objectives;

- Wealthier and Fairer
- Healthier
- Safer and Stronger
- Smarter
- Greener

Promotion of the Consultation

Posters were produced and distributed via Community Council contacts in each area, local public noticeboards and by direct invitations to community groups. Community Councils and local groups contacted were asked to promote the events through their own local networks. Efforts were made to use community venues where it was known activities were taking place before, after or during consultation events. Submissions were also invited through an online questionnaire.

Venues, Dates and Times

The consultations took place in the following areas:

- (i) Ballachulish, Ballachulish Village Hall, Thursday 4th February 5pm – 8pm
- (ii) Kinlochleven – Leven Centre, Thursday 11th February, 5pm – 8pm
- (iii) Glencoe, St Mary's Church Hall, Thursday 18th February 4pm - 7pm
- (iv) Duror, Duror and Kentallen Village Hall, Thursday 25th February, 5pm – 8pm
- (v) Nether Lochaber – Nether Lochaber Village Hall, Thursday 3rd March , 4pm – 7pm

During the consultations, participants were invited to 'post' their thoughts, views and opinions onto a pre-prepared discussion chart. At the end of each session, the details were summarised on an area by area basis.

Market Place Event

A market place event, providing a variety of information stalls from Lochaber Community Planning Partnership, took place on May 28th 2016. Initial feedback from the consultation was provided at this event. A call was made at this event for further feedback. This provided comments on the day and responses through online questionnaire.

SECTION THREE

South Lochaber Consultation

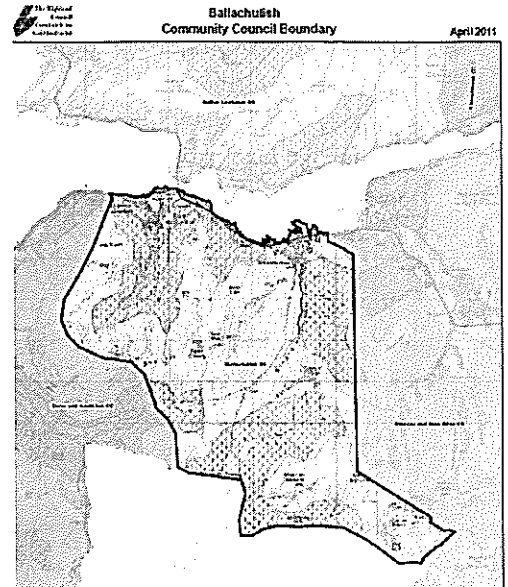
Ballachulish

Population: 760 (2011 Census)

Numbers contributing to the consultation: 10

The Ballachulish Consultation took place on Thursday 4th February from 5.00- 8.00pm. 10 members of the public attended the event.

There was some confusion among participants as Ballachulish Community Association were simultaneously currently undertaking a community consultation exercise to develop a development plan for the Ballachulish area. Efforts are ongoing to ensure LCPP works closely with the Community during this process.



Summary Responses

HEALTHIER

In response to;

Q. What would assist you to adopt a healthier lifestyle in your local area?

- More use of forestry area & shore for leisure and recreation, including looped walks
- Better Playpark facilities, including equipment for pre-school age, teenager and adults
- Bowling Green
- More promotion of sports clubs
- Improved path around 'the point' – very muddy underfoot

Q. Is there anything else we can do to improve health or support services in the local area – what are the gaps?

- VC Conferencing used to link local doctor's surgeries with Consultants in Inverness, and Belford to reduce number of 6 hours return journeys to Inverness (Western Isles NHS held up as good practice)
- Improved antenatal and post-natal facilities locally are urgently required
- Improved Community representation on all relevant committees' e.g. new hospital/health facility
- Befrienders Project

SMARTER

In response to;

Q. What barriers are there to accessing learning opportunities in your community?

- UHI Courses in Ballachulish, particularly community courses such as Gaelic, European Language and Music Classes
- Internet Hub facility
(Discussion round free community hubs in Argyll council area giving free internet access in community centre...though national initiative. Free internet access with training, pension and dole services are both moving over to internet systems)
- Buses to early and not on time

Q. How can we improve opportunities to develop and promote Gaelic Language and Culture?

- Cinema club
- Need to link active halls in Lochaber to attract these touring events/theatre companies
- We need to link our communities – sharing information; ideas
- Promote FEIS in Ballachulish
- Music local groups, folk music and feis

SAFER and STRONGER

In response to;

Q. What would help to make you feel safer within your local area?

Q. What would make your community 'stronger'?

- Need for smaller community space and storage space to compliment village hall
- More community events to bring people together
- Dedicated place for young people to go at night
- More Volunteers
- Public Entertainment Licence – even if donations will need to have PEL so will make Ballachulish Firework Display unrealistic...licence process no longer has a village hall category anymore
- Community involvement in decision making for hospital, community nursing, community social care. The need for local elderly care
- School campus for all, area has 4 schools 2 in poor condition. The need to upgrade buildings is now a major concern
- Lunch/Supper Club for all ages
- Befriending – to address isolation for those unable for whatever reason to go to existing social opportunities, not just about elderly
- Return to traditional policing of rural areas
- Dial a bus for area
- Communication transport within Lochaber seaplanes, ferries etc
- Lighting in the underpass (Ballachulish) below A82.

WEALTHIER and FAIRER

In response to;

Q. What would encourage business development and growth in your area?

- Better Roads
- Winter road conditions, very poor road maintenance
- Better internet connection
- Fuel duty rebate
- Improved slip way (Loch Leven)

Q. What are the barriers to economic growth in your area and what can be done to remove them?

- Free hub/wi-fi for all ages
- Procurement process within HC and others make it near impossible for small local companies to tender versus small local companies probably more accountable within local communities?
- Address Courier Fees
- Social Housing, especially Single People and Single Parents
- Better sign posting (for tourists)

GREENER

In response to;

Q. What would make your community a 'greener' place?

- More kerbside recycling
- Electric charging points for cars
- Allotments
- Litter ongoing issue in village
- Encourage/make safe for kids to walk/cycle to school and around village
- Community/household composting facilities
- Litter/Recycling bins in village

Q. What more can be done to support sustainable management of land and sea – and promotion of local products?

- Wildlife watching stations, great to have something like Garbh Eilean hide on Loch Sunart but cheaper alternatives could be just as effective.
- Tidal power scheme
- Better FITS for community ventures

- Interpretation for visitors
- Encourage local businesses to use local products, perhaps local facebook page to sell local produce.

Kinlochleven

Population: 914 (2011 Census)

Number contributing to the consultation: 6

The Kinlochleven consultation was held in the Leven Centre on Thursday 11th February. There were six attendees who spent considerable time answering the questions.

Summary responses

HEALTHIER

In response to;

Q. What would assist you to adopt a healthier lifestyle in your local area?

Q. Is there anything else we can do to improve health or support services in the local area – what are the gaps?

- Boat Club seems to be under used
- Start a walking group in Kinlochleven
- Re-introduce flower and vegetable show
- Community effort to encourage gardening by all and address problem of untidy/unkept gardens

SMARTER

In response to;

Q. What barriers are there to accessing learning opportunities in your community?

Q. How can we improve opportunities to develop and promote Gaelic Language and Culture?

- Gaelic classes in the evening

SAFER and STRONGER

In response to;

Q. What would help to make you feel safer within your local area?

Q. What would make your community 'stronger'?

- Kinlochleven High School was flagged up as having good discipline and providing quality education
- People moving to the area are made welcome
- The Guild is very active and provides a welcome to everyone regardless of their religious beliefs
- There is an excellent public bus service (every hour to town); for older folks the bus trip in itself can be a social occasion
- CHECK – did Community Bus lose out on funding
- Lack of shopping options in the village
- More presence of police within community

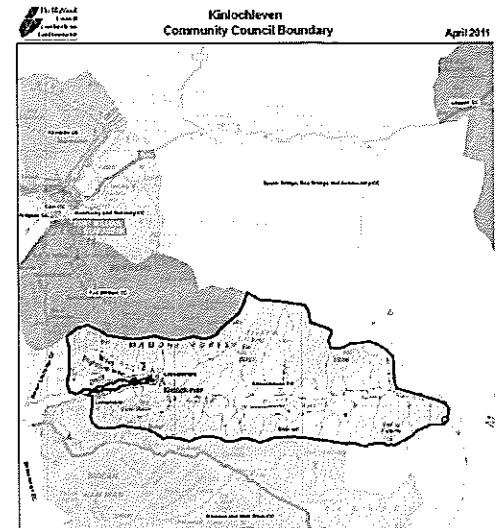
WEALTHIER and FAIRER

In response to;

Q. What would encourage business development and growth in your area?

Q. What are the barriers to economic growth in your area and what can be done to remove them?

- Create opportunities for business start in empty shops – is there some way of making them affordable to lease?
- The new hydro scheme may bring funds to the village



- Open a launderette
- Brewery seen as a good business for the village
- The village is well placed to benefit from those walking the West Highland Way

GREENER

In response to;

Q. What would make your community a 'greener' place?

- Each Council House be converted to wood chip system
- Address Neglected Gardens
- Less littering

Q. What more can be done to support sustainable management of land and sea – and promotion of local products?

- Double decker buses are too big for number of passengers
- The community put in great effort to keep the communal spaces attractive
- If there were facilities to water hanging baskets they could be organised locally

Glencoe and Glen Etive

Population: 377

Numbers contributing to the consultation: 2

This event took place on Thursday 18th February from 4.00 – 7.00pm at St Mary's Hall in Glencoe Village.

There were only two attendees, a Community Councillor and his wife. The Community Council had passed the invite widely before the event. The event had been organised to fall between two regular classes at the hall but this did not attract additional attendees.

Summary Responses

HEALTHIER

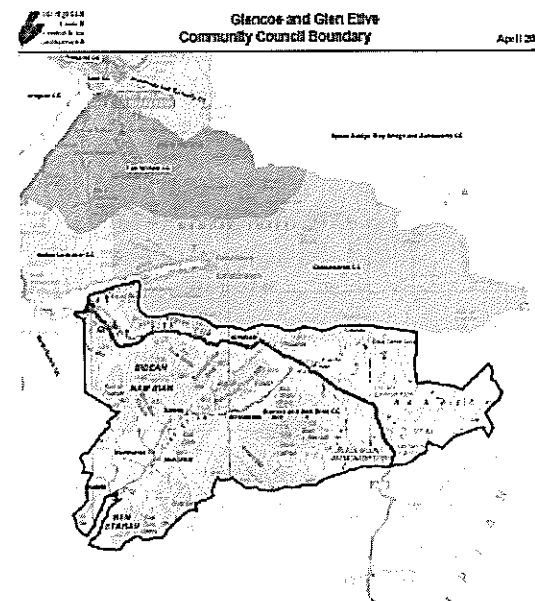
In response to;

Q. What would assist you to adopt a healthier lifestyle in your local area?

- Lots of good walks and tracks but not always well known, well maintained or signposted
- Rannoch Station to Glencoe walk very good but it does involve crossing the West Highland Way
- If trains could be taken on bikes (without pre-booking) that would be good
- Question why HC subsidise Glencoe based pupils to go to Aonach Mor to ski when there is a ski resort in their own area
- Orbital path has a gap in it which NTS had promised to complete? But this has not happened so people have to walk back on the same route rather than completing the circuit
- HIE has provided financial assistance to help in the clear up of the Clachaig path

Q. Is there anything else we can do to improve health or support services in the local area – what are the gaps?

- School doesn't have its own gym but does use local hall



SMARTER

In response to;

Q. What barriers are there to accessing learning opportunities in your community?

- Participants often travel from Glencoe to Kinlochleven – often there will be more participants from Glencoe than Kinlochleven. (Could the Trainer come to the participants?)
- Funding for Wifi facilities for Village Halls
- Young people to be made more aware of Saltire Awards

Q. How can we improve opportunities to develop and promote Gaelic Language and Culture?

- Is enough made of the History of the Glen? B&B people to become better informed so that they can pass info on to their visitors
- Discover Glencoe is seen as being very good at promoting what is going on in the area
- There's going to be a Glencoe Autumn Festival which will involve school children

SAFER and STRONGER

In response to;

Q. What would help to make you feel safer within your local area?

- The 40mph speed limit going through Glencoe was seen as positive

Q. What would make your community 'stronger'?

- The community would benefit from more people getting involved – too often it's the same people that do everything and they will get tired eventually and stop
- VAL to help co-ordinate community held events in Lochaber to promote community involvement
- Assistance/Access to transport for social trips as costs have become prohibitive – The Glencoe Senior Group organise regular activities as part of their fundraising, no longer able to take trips
- A Befriending service for those people difficult to reach
- No families living in Glen Etive. Owners of Dalness House only use it for holidays – appear to have no engagement with the community
- Village Hall needs repairing and no car park facilities at Village Hall. Work underway to develop opportunity to build a new village hall on the open HC owned ground near the school

WEALTHIER and FAIRER

In response to;

Q. What would encourage business development and growth in your area?

- More could be done to encourage business start-up on the open areas of land that belong to HC

Q. What are the barriers to economic growth in your area and what can be done to remove them?

- Poor quality of A82
- Affordable housing is in limited supply – many owners have built or buy houses in the area for the sole purpose of holiday lets; the question around change of use for housing being taken out of residential purposes was mooted

GREENER

In response to;

Q. What would make your community a 'greener' place?

- Litter in Glen Etive an increasing problem – no one taking responsibility

Q. What more can be done to support sustainable management of land and sea – and promotion of local products?

- Better management of roadside trees – need to clear scrub to enable everyone to enjoy the countryside.
- 'New' A82 splits Glencoe crofts, making it dangerous to move stock from one side of the road to the other
- Important to look after the remaining Croftland
- Concern raised about impact of food waste from fish farm sites
- Fish Farm 'Ironmongery' seen as unattractive
- Disappointed in NTS land management approach, only one farm remains in Glencoe
- New legislation re catch and release seen as positive
- More needs to be done to encourage young people to take up fly fishing

DUROR and KENTALLEN



Population: 330 (2011 Census)

Numbers contributing to the consultation: 2

The Duror Consultation event took place on Thursday 27th February from 5.00 – 8.00pm at Duror and Kentallen Village Hall.

There was only two attendees, a Community Councillor and his wife. Both had made an effort of our behalf to encourage people to attend. The event had been organised to coincide with bowling at the hall but members of the public could not be encouraged to participate when approached on the evening.

Summary Responses:

HEALTHIER

In response to;

Q. What would assist you to adopt a healthier lifestyle in your local area?

Q. Is there anything else we can do to improve health or support services in the local area – what are the gaps?

- A local shop to buy local produce, fruit and veg, freshly baked cakes etc

SMARTER

In response to;

Q. What barriers are there to accessing learning opportunities in your community?

- Very slow internet
- No internet at Community Centre
- Culture

Q. How can we improve opportunities to develop and promote Gaelic Language and Culture?

SAFER and STRONGER

In response to;

Q. What would help to make you feel safer within your local area?

Q. What would make your community 'stronger'?

- Café/Shop/Post Office all together to create a hub and place for people to meet
- A better bus service
- Nursery provision in Duror

WEALTHIER and FAIRER

In response to;

Q. What would encourage business development and growth in your area?

Q. What are the barriers to economic growth in your area and what can be done to remove them?

- A café would help to bring in income and act as a central hub for the community
- More low cost housing to attract young working families
- A82 needs major attention
- A local shop in Kentallen or Duror selling local produce

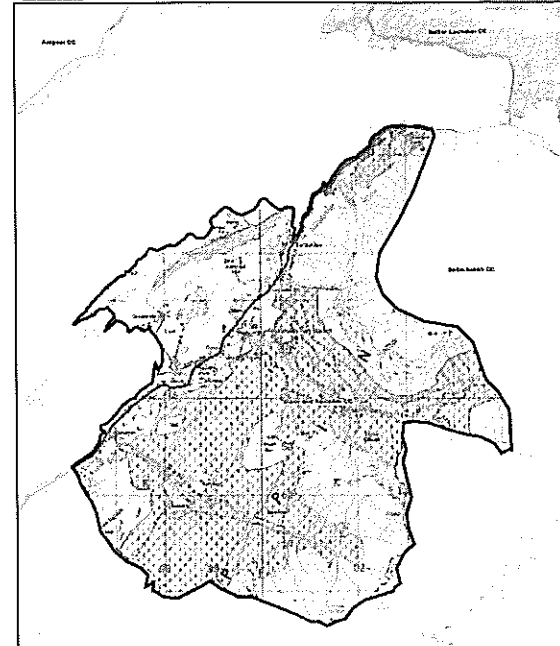
GREENER

In response to;

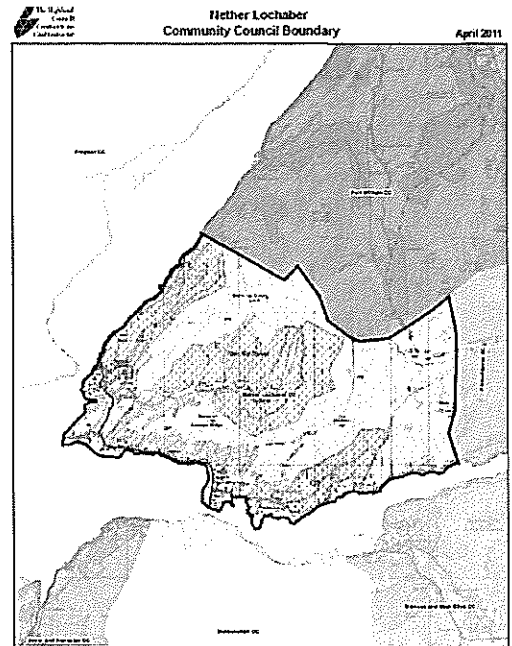
Q. What would make your community a 'greener' place?

Q. What more can be done to support sustainable management of land and sea – and promotion of local products?

- Encourage sale of local produce
- Better public transport



Nether Lochaber



Population: 495 (Census 2011)

Numbers contributing to the consultation: 1

Consultation took place on Thursday 3rd March in Nether Lochaber Village Hall from 4.00 to 7.00pm. There was only one attendee. Efforts had been made to raise awareness about the event. N Lochaber Community Council arrived for meeting for 7.00pm in hall, some seemed aware of event and others didn't. Offers were made to respond online but this was not forthcoming.

Summary Responses

HEALTHIER

In response to;

Q. What would assist you to adopt a healthier lifestyle in your local area?

Q. Is there anything else we can do to improve health or support services in the local area – what are the gaps?

- Aging population increasing healthcare reliance
- More places for older people in homes and sheltered housing

SMARTER

In response to;

Q. What barriers are there to accessing learning opportunities in your community?

- Maritime studies only delivered in Mallaig, too far from South Lochaber
- Learning Opportunities within UHI need to develop unique selling point
- What is available locally (education) that links direct to local job opportunities
- IT Skills for pensioners

Q. How can we improve opportunities to develop and promote Gaelic Language and Culture?

- More Gaelic in schools
- Ceilidh Trail great experience for those involved

SAFER and STRONGER

In response to;

Q. What would help to make you feel safer within your local area?

Q. What would make your community 'stronger'?

- Community activities and gatherings to bring people together
- Ensure pick up option for those that needed it
- More council house provision

WEALTHIER and FAIRER

In response to;

Q. What would encourage business development and growth in your area?

Q. What are the barriers to economic growth in your area and what can be done to remove them?

- Pontoons in Fort William area. Potential to make more use of sea, better access to sea, particularly to launch boats
- Encourage alternative transport particularly to encourage industry by sea
- Improve broadband connection, and develop tele-working opportunities
- Diversification of economy, particularly over reliance on seasonal low wage tourism sector
- Beekeeping
- Encourage development of renewables industries in Lochaber, rather than bringing in expertise and equipment from elsewhere

GREENER

In response to;

Q. What would make your community a 'greener' place?

Q. What more can be done to support sustainable management of land and sea – and promotion of local products?

- Don't build on green fields
- Less tourists
- Cleaning of plastics in the water
- Get Crofts back into use; encourage young people into crofting.; too many crofts lying empty
- Use land for specialist products ie highland cattle, rare/unique breeds
- Use mull slaughter house
- Lochaber Brand
- Schools to secure allotments
- Community litter picks

SECTION FOUR

Next Steps

The Lochaber Community Planning Partnership are invited to take the findings of this report into account when updating the Community Plan.



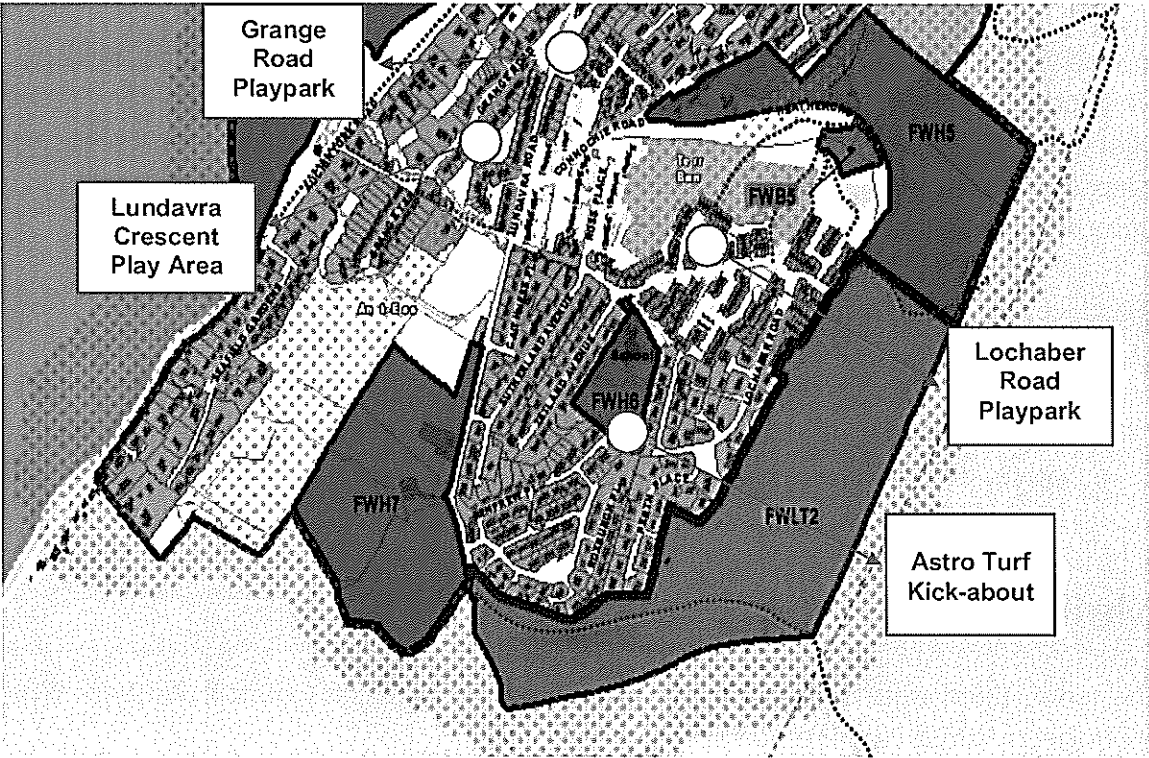
Upper Achintore Playpark Consultation June 2016



Contents

	Page
I. Area Map	2
II. Background	3
III. Methodology	3 - 4
IV. The Survey	4
V. Survey Results	5 - 12
VI. Lundavra Primary School P5 Pupils Focus Group	13 - 14
VII. Summary of Survey Results	15 - 16
VIII. Upper Achintore Play Parks – Action Plan	17

Upper Achintore Area Map



Background

In 2011 the Lochaber Community Planning Partnership supported the development and implementation of a Lochaber Playpark strategy. This strategy identified a number of areas in Lochaber which would benefit from new or further enhancement of play provision as well as areas which might benefit from some consolidation. It also sought to identify current monies held by the council from developer contributions for playparks and a strategy for consulting the communities against the future spend of these monies and any new developer monies in the future.

In addition to the strategy document itself, support for community groups looking to develop provision in identified areas was made available through Voluntary Action Lochaber. During the development of the Strategy Document a Play Park Information pack was developed and has and continues to be made available to any community group looking to improve or consolidate play provision in their area.

This survey has been brought about at this time due to

- concerns raised by the public at the location of the Grange Road Play Park area,
- the relocation of the school leaving behind a failing "kick about" astro turf area
- present and future potential of "developer contributions for assisting with upgrading or the creation of new play provision"

Methodology

The survey forms were developed with input from The Highland Council's Assistant Ward Manager and VAL Staff members.

The survey consultation process was widely advertised through various methods

- Press Releases
- Posters in Grange Stores, High Street Service Point, Library and Voluntary Action Lochaber
- VAL website, and distributed to all VAL E – update contacts
- Key contacts in Highland Council & NHS

Voluntary Action Lochaber also engaged the support of the Head Teacher and staff of Lundavra Primary School to reach children and families residing in the Upper Achintore area. All staff at the school went through the survey with the children prior to distribution and encouraged them to get parents/carers to complete.

The Survey was distributed to

- Lundavra Primary School Pupils including the nursery (270)
- Pupils in both Lochyside Primary and Bun Sgoil Gaidhlig a Gearasdan who were residents in the Upper Achintore area. (50)

The survey was also available in hard copy from

- Grange Stores
- Fort William Service Point
- Fort William Library
- Voluntary Action Lochaber

The survey was also available in electronic format and the link was widely advertised on

- VAL Website
- Press Releases
- Posters
- Network distribution via email.
- Hard copies of the survey

VAL facilitated a public consultation session on Wednesday 15th June 3 p.m. – 7 p.m.at Lundavra Primary School and a focus group session with P5's in Lundavra Primary School on Monday 20th June 2016

The Survey

The survey included

- a comprehensive description of the present condition of the Play parks and existing issues raised by residents
- A recent technical inspection report of the Astro Kick-about pitch
- Information on available developer's monies

The final survey form asked respondents about their views in relation to the retention of the Astro Pitch and to ascertain whether there was a willingness for a community group to be formed to take this on. The retention of the Grange Road Play area. The use of existing and future developer's monies. The potential siting of any new play areas and if they wished to see a new facility at the new council office area on Achintore Road.

The Survey Results

Upper Achintore Play Park Consultation 2016

What is your age?

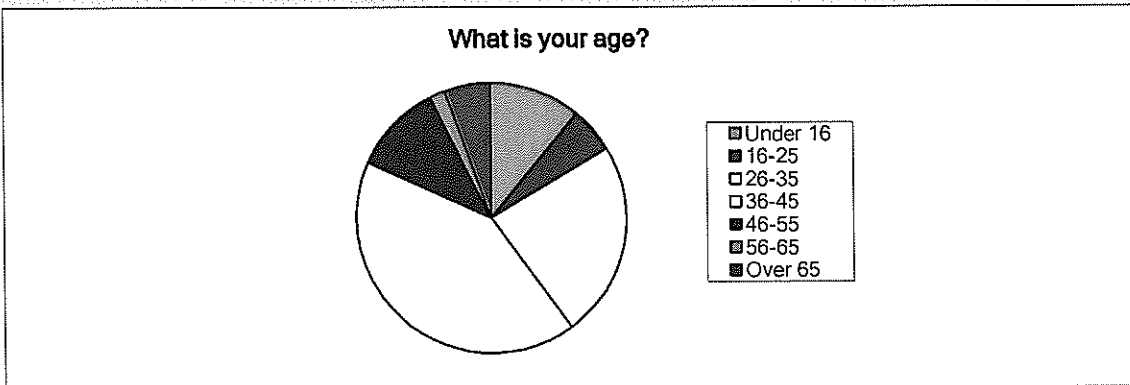
Answer Options	Response Percent	Response Count
Under 16	10.9%	6
16-25	5.5%	3
26-35	23.6%	13
36-45	41.8%	23
46-55	10.9%	6
56-65	1.8%	1
Over 65	5.5%	3

answered question

55

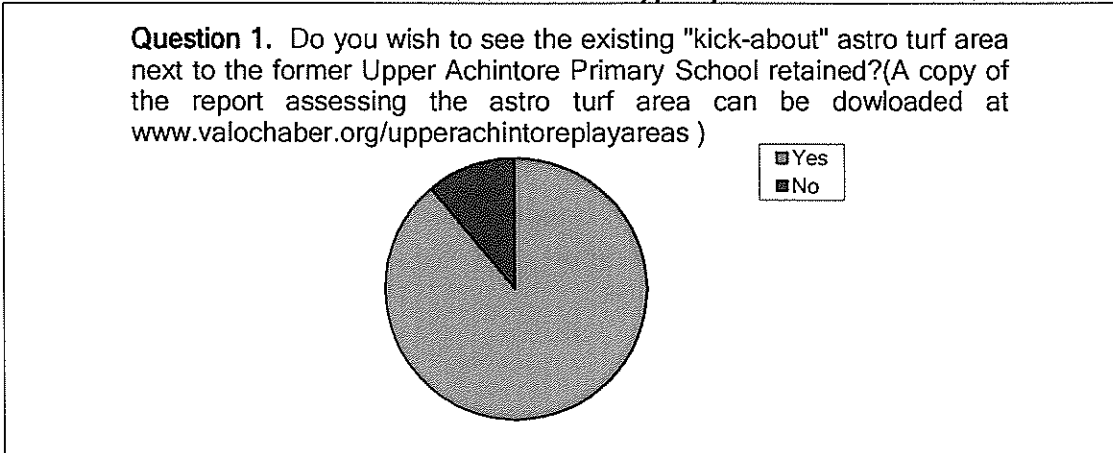
skipped question

1



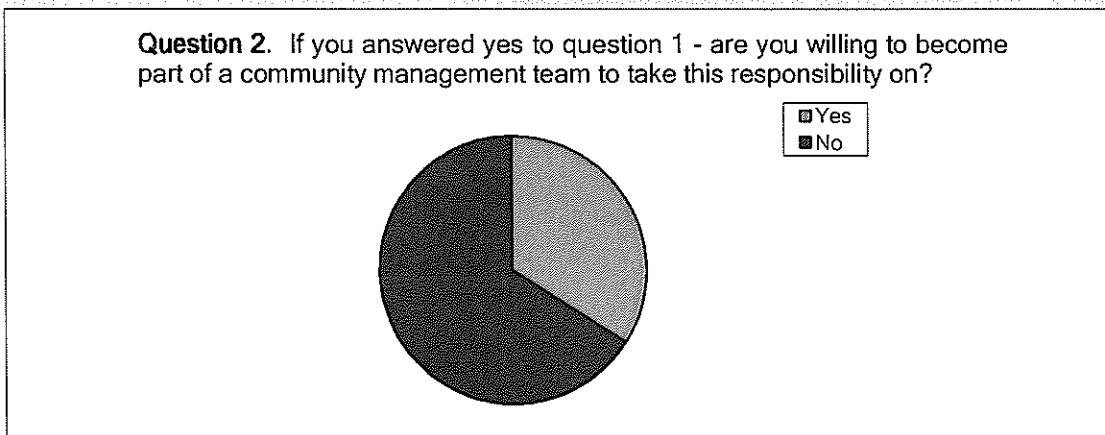
Question 1 Do you wish to see the existing "kick-about" astro turf area next to the former Upper Achintore Primary School retained? (A copy of the report assessing the astro turf area can be downloaded at www.valochaber.org/upperachintoreplayareas)

Answer Options	Response Percent	Response Count	
Yes	88.9%	48	
No	11.1%	6	
			54
			2



Question 2. If you answered yes to question 1 - are you willing to become part of a community management team to take this responsibility on?

Answer Options	Response Percent	Response Count	
Yes	34.0%	18	
No	66.0%	35	
			53
			3



If you answered yes to Question 2 please leave your contact details below.

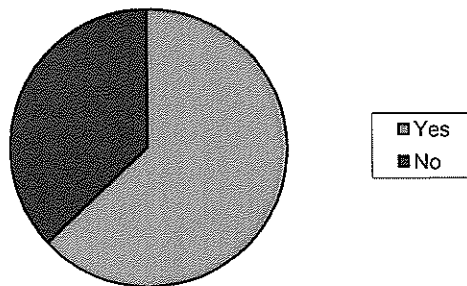
Answer Options	Response Percent	Response Count	
Name	100.0%	18	
Address 1	100.0%	18	
Address 2	83.3%	15	
Address 3	72.2%	13	
Telephone Number	72.2%	13	
Email Address	77.8%	14	
			answered question
			18
			skipped question
			38

A list of the community members willing to become part of a community management team is available as an Appendix of this report.

Question 3. Do you think the Grange Road area play park should be closed and any salvageable (reusable) equipment be moved to another playpark in the Upper Achintore area?

Answer Options	Response Percent	Response Count	
Yes	63.0%	34	
No	37.0%	20	
			answered question
			54
			skipped question
			2

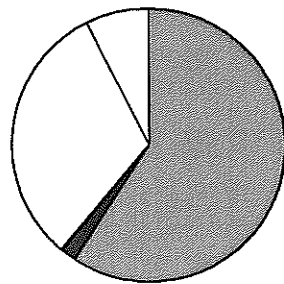
Question 3. Do you think the Grange Road area play park should be closed and any salvageable (reusable) equipment be moved to another playpark in the Upper Achintore area?



Question 4. Which Play Park in the Upper Achintore area would you like to see the £13,500 of existing developer monies spent?

Answer Options	Response Percent	Response Count
Lochaber Road Play Area	59.3%	32
Grange Road Play Area	1.9%	1
Lundavra Crescent Play Area	31.5%	17
Other (please specify)	7.4%	4
<i>answered question</i>		54
<i>skipped question</i>		2

Question 4. Which Play Park in the Upper Achintore area would you like to see the £13,500 of existing developer monies spent?



- Lochaber Road Play Area
- Grange Road Play Area
- Lundavra Crescent Play Area
- Other (please specify)

Question 5. What would you like the money spent on? Please give a few examples of the type of new equipment you would like to see, or existing equipment replaced?

Answer Options	Response Percent	Response Count
(a)	89.4%	42
(b)	68.1%	32
(c)	57.4%	27
Other Please specify	25.5%	12
<i>answered question</i>		47
<i>skipped question</i>		9

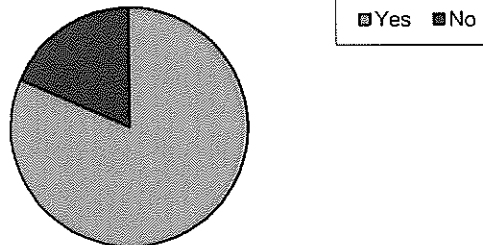
Choice A		Choice B		Choice C	
New Swings	8	Buddy Swings	3	Dark Slide	4
Zip Wire	4	Swings	3	Bumpy Slide	1
Climbing Frame	7	Basket Swings	2	Slide General	4
Slide/Chute	5	Zip Wire	2	Zip Wire	2
Round a bout	2	Round a bout	4	Climbing Frames	4
Basket Swing	1	See - Saw	1	Swings	3
Sandbox	1	Resurfacing	3	Mini Trampolines	2
Horse	1	Climbing Frames/Equipment	4	Resurfacing	2
Rope Slide	2	Slides	3	Round a bout	3
Tyre Swing	1	Football Pitch	2	Sea Horses	1
Resurfacing	2	More Equipment	4	Obstacle Courses (Older)	2
Equipment for younger Children	5	Ground Trampoline	1	More equipment for younger children	3
Football Area/Goals	3	Outdoor Learning Equipment	1	New facility similar to Plantation required	3
Equipment for older children	3	Equipment like the Plantation	1	Flying Fox	1
General upgrade/Cleaning	2			Ship and Binoculars	1
Grange Road Car Park	6			Astro Turf retention	3
Astro- turf retention	2				

Question 6. Would you like to see any small sums of developer monies in the future being used to continue upgrading existing provision instead of being held until such times that there is enough to develop a new play park site?

Answer Options	Response Percent	Response Count
Yes	81.5%	44
No	18.5%	10

answered question 54
skipped question 2

Question 6. Would you like to see any small sums of developer monies in the future being used to continue upgrading existing provision instead of being held until such times that there is enough to develop a new play park site?



Question 7. If there is opportunity to have a new play park serving new houses (and existing ones) in the future, where do you think is the most appropriate area for this to go? Please refer to the map at the bottom of this page. NB: The areas FWH5, FWH6 and FWH 7 are potential future housing sites.

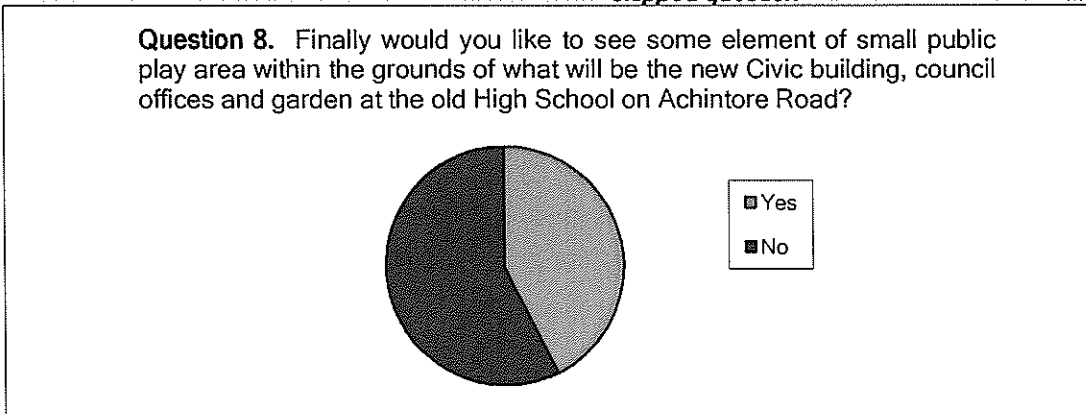
Answer Options	Response Count
	54
<i>answered question</i>	54
<i>skipped question</i>	2

FWH5	FWH6	FWH7	FWB2	FWLT2
11	22	7	0	3
26%	51%	16%	0%	7%

Depends where the new housing areas are going to be x 1
 Don't know x 4
 Upper Achintore x 1
 Lochaber Road Play Area x 4
 Astro Turf x 1

Question 8. Finally, would you like to see some element of small public play area within the grounds of what will be the new Civic building, council offices and garden at the old High School on Achintore Road?

Answer Options	Response Percent	Response Count
Yes	42.6%	23
No	57.4%	31
	<i>answered question</i>	54
	<i>skipped question</i>	2



Do you have any other views or comments you would like to add?

Answer Options

Response Count

12

answered question

12

skipped question

44

Views/Comments

FWhó play area needs a full revamp really and if need be a small group of local residents should have the ability along with the support of the local council to raise extra money with council incentives to (match what is raised) so that a play area for all ages can be built. Fwhó is a decent sized area and it could really give the upper achintore area a big boost.

Playparks should be a safe place for children to play in and not a hangout area for teenagers to break bottles and leave broken glass behind.

Losing the astro would be a great shame. it is in a great location for both Upper Achintore & Loch View residents. This area is safe & away from any main road. This would be an ideal location to be made into a fabulous play area. The Lochaber Rd park is in need of update. Not child friendly at all. ??

Installing a play area at the secondary school site would only repeat the problems created by the siting of the already existing playpark on grange road. The secondary school site sits between Achintore Road and Lundavra Road two of the busiest roads in Lochaber.

Grange Road Play Area "Grange Road Stores Car Park" this is a public car park owned by the Highland Council and is a seriously inaccurate statement and should be corrected. Public Meeting: Grange Road Play Park - could create 20 new parking spaces.

Money should be invested in the Astro Turf. Don't underestimate the value of this above the other areas listed It allows bigger children and youth to exert their energy in a constructive rather than destructive manner

Most play areas are up the hill and require many road crosses for those of us living at the bottom - so our younger children 3 to 8 year old's cannot access these without an adult going with them now.

The report on the astro-turf indicated lack of maintenance as prime reason for deterioration. HC had a duty of care to maintain & continue running the facility. H & S items relating to goals and perimeter fencing relatively minor. Flooding and siltation are directly related to lack of regular brushing and sand infill. this area should also be considered for part sports use and booking by clubs. It seems that there will be a large expansion in housing in upper achintore, yet potentially we could lose 2 of only 4 play areas. There needs to be more responsibility by highland Council for providing and running community and communal facilities. There Is Enough Housing in Upper Achintore Already!

THERE ARE ALOT OF CHILDREN IN UPPER ACHINTORE SO WE BADLY NEED A NEW PLAY AREA

Has the council ever thought of building a lovely big swing park just like the one in inverness. that will be able to serve the whole of fort William then maybe hand some swing parks to the community to maintain

I think there could be something done in the grass area behind ross place as it's a safe area for children to play at as there is no road near it. there used to be goal posts but they have been taken away. It is such a waste and could be used for so many things for the children.

Lundavra Primary School P5 Pupils Focus Group

Primary 5 Pupils - 22

Facilitated session led by: Nick Thompson Head Teacher,

In attendance: F McKee VAL, + Class Teacher

NT – Introductions & outline and purpose of session.

Astro Turf

How many children have returned the Playpark Survey? 2

How many children think the closure of the Astro Turf is a bad idea? 6

How many wrote to Cllr MacLennan regarding the closure of the Astro Turf? 15

Grange Road Playpark

How many of you use/plays at the grange road playpark? 6

Do you think there are any problems or things that need done to make it better?

Comments:

1. Too close to the road
2. No safe place to cross the road
3. Needs more equipment
4. Needs new floor

Lochaber Road Playpark

How many of you use/play at the Lochaber Road Playpark? 12

Do you think there are any problems or things that need done to make it better?

Comments:

1. Needs cleaned up
2. Lots of broken glass
3. Needs tidied
4. Worn down needs fixed up
5. Needs graffiti cleaned up
6. Needs new equipment

Lundavra Crescent Playpark

How many of you use/play at the Lundavra Crescent Playpark? 11

Do you think there are any problems or things that need done to make it better?

1. Needs more stuff
2. Worn down equipment
3. Needs cleaned and painted

Astro Turf – Kick about

How many of you use/play at the Astro Kick about area? 17

What do you use the Astro for?

Comments

1. Football
2. Ball games

Can't you play ball games elsewhere?

Comments

1. there is only the Plannie but it is concrete
2. it is the only flat area for playing football
3. It is a safe place
4. There is nowhere else to go so we just have to stay in the house and play games

If money was available, just a little what would you spend the money on?

1. Repairing the Astro
2. Lundavra Cres clean up
3. Make signs for Lochaber Road Playpark
4. Clean up Lochaber Road
5. New goals in Astro
6. Fix the astro

If you worked for the council and you got some money, about £13,000 which is not a lot what do you think would be the best use of the monies?

Repair Astro	15
Improve Grange Road	2
Improve Lundavra Crescent	2
Improve Lochaber Road	3

Why is the Astro so popular?

Comments:

1. People gather there after school
2. We need to get some workers in and hire them for the day
3. It is the only bit of land that's flat
4. It is the only place to play football
5. Only place for ball games
6. Grange road is too close to the road
7. Grange Road needs crossing
8. I prefer the Astro as it is the closest place
9. The Plantation is too far and it is concrete
10. The Astro has a safe surface
11. It is the only place for playing football
12. It is a safe place to play there is no broken glass

Summary of Survey Results

Responses

A total of **56** responses were received.

Under 16	10.9%	6
16-25	5.5%	3
26-35	23.6%	13
36-45	41.8%	23
46-55	10.9%	6
56-65	1.8%	1
Over 65	5.5%	3

22 Primary 5 children participated in the Focus Group session.

Astro Turf Kick About Area

It is clearly evident that the majority of survey participants wished to see the retention of the Astro kick about area in Upper Achintore with **85%** of responders in favour. During the P5 pupils focus session it was evident that the children valued the kick-about area as this was the only flat area in which to safely play ball games.

A good number of responders have noted their interest in forming a community management team to take on this responsibility. (*Appendix 1*)

Grange Road Play Area

The survey results showed that **68%** of responders were in favour of the closure of the Grange Road Play Area. On further analysis the **38%** against the closure were those living in close proximity to the Play Area.

The P5 focus group acknowledged that there were safety issues regarding access to and from the play area, highlighting the play area's close proximity to the main road and lack of a designated crossing.

During the consultation a number of people expressed their views with regards to converting the area into additional car parking facilities.

Developers Monies

Over **58%** of responders wanted to see the existing developer's monies invested in the Lochaber Road Play area. A further **36%** chose Lundavra Crescent Play Area to benefit from developer's monies.

Interestingly when the children in the focus group were asked what they would do with a sum of £13,500, **68%** chose to use it to repair the Astro Turf Kick-About Area. This was not an option given on the main survey, however a number of comments were received that supported developer monies being invested in the Astro Turf Kick-about area.

The P5 Focus Group valued both the Lundavra Crescent and Lochaber Road Play areas but felt they both lacked equipment and were in need of upgrade and regular maintenance.

The survey results showed that over **80%** of responders would prefer to see developer's monies used to upgrade existing playparks on an ongoing basis. Less than **20%** felt it should be kept to invest in new or larger projects as more developer's monies became available. The survey responders gave a wide range of examples of equipment (see results on page 8)

Potential New Play Area Sites

As part of the survey responders were asked their preferred option for siting any future new Play areas. The area marked **FWH6** was the most popular site with **51%** the second most popular with **26%** was area **FWH5**.

FWH7 received a response of **16%**, **FWLT2** received **7%**, with **FWB2** receiving no response.

The most popular site **FWH6** is the area of the former Upper Achintore Primary School adjacent to the Astro Turf Kick-About area.

FWH5 area is identified in the local development plan as Upper Achintore North – Mixed use site (currently identified as a preferred site for housing of approximately 300 units).

The survey asked participants whether they would like to see an element of small public play within the grounds of the new Civic Building on Achintore Road. **57.4%** of responders did not want a new facility in this area with **42.6%** voting for a new play area on this site. On further analysis of the results it was found that responders living within Achintore and Grange Road areas made up the majority of those in favour of a new play facility on the grounds of the new Civic Building

Upper Achintore Play Parks – Action Plan resulting from the June 2016 consultation on play provision

1. Astro Turf Kick about area

Action	Reason	By whom	By when	Comment
a) Remove failed surface	To allow the flat area to be opened up again	Highland Council Care & Learning service	(in consultation with C&L / community group) End of November 2016	Funding approved for removal of failed surface
b) Call meeting of all people that expressed an interest in forming a community management group for the kick about area	To explore the potential of the community taking over ownership of the area to enable local control and raising of funds for improvement and on-going care.	Voluntary Action Lochaber	End of November 2016	Public Meeting 7 p.m. Thursday 6 th October 2016 The Community Room, Lundavra Primary School

2. Grange Road Play Area

Action	Reason	By whom	By when	Comment
a) Close play area and remove all equipment.	Health and safety grounds - 63% of respondents were in favour of closure.	Highland Council, Community Services	December 2016	Public notices are to be put up advising of closure date
b) Salvage any re-usable play equipment and relocate to Lundavra and/or Lochaber Road play areas	To help improve range of equipment in these play parks.	Highland Council, Community Services	December 2016 (weather permitting)	One piece of salvageable equipment has been identified and will be relocated

3. Developers monies

Action	Reason	By whom	By when	Comment
a) Use developer's monies to improve Lundavra Crescent and Lochaber Roads play areas	Consultees want to see monies spent to improve existing play park provision.	Highland Council, Community Services	January 2017	Purchase of equipment will be guided by the consultation feedback results and further discussion with P6/7 pupils in Upper Achintore Primary School.
b) Seek additional support from Criminal Justice Service for tidy/clean-up of Lundavra Crescent and Lochaber Road play areas	Noted respondents also want to see areas cleaned and tidied up so they are more pleasant and safer places to be.	Highland Council Community Services / Criminal Justice Service	January 2017	

4. Potential new play area sites

Action	Reason	By whom	By when	Comment
a) 'Community management group' to look at potential development of kick about site area and	51% of survey responders wanted to see further development of a play area on the site of the old primary school and grounds.	Community Management group, Highland Council	End of December 2017	

explore what other areas of land surrounding could be released to the community for the purposes of further developing play provision.				
b) Planning service to take note that the community (after the old school site) felt that there should be new play park provision in the Upper Achintore North site (FWH5) to service housing in that area if/when it is developed.	The community feel additional new play provision would be needed (on site) if the north site were developed substantially for housing.	Highland Council, planning service	As required	

*Consultation feedback:

Most favoured top 3 items for renewal / additional installation in Lochaber Road and Lundavra Crescent Playparks are:

New swings	
Climbing frame	
Slide/Chufe	J
Equipment for younger children	J

Voluntary Action Lochaber is a Charitable Company Ltd by Guarantee registered in Scotland No 179048.
Charity Number SC020740



0



Community planning structure (UPDATED)

Lochaber

The Lochaber Partnership is the overarching community planning partnership in Lochaber. It is a constituted group with secretariat currently provided by Highland Council. Membership is made up of the Lochaber District Partnership and Lochaber Economic Development and Employability Forum membership collectively.

The Lochaber Partnership meets twice a year and has recently moved to a 'market place' format to encourage further direct engagement with communities. These market place sessions take place in communities around Lochaber on a rotation basis. Partners provide;

- A drop-in session for the general public to find out information on agency and organisational activity in the locality
- Provide an opportunity for the Partnership to seek views and receive feedback from the general public
- Give a chance for the Lochaber Partnership to discuss feedback from the 'micro consultation' work which helps inform the Lochaber community development plan priorities.
- Discuss community planning themes and issues common to both of the two primary thematic Community Planning fora in the area - which deal with the day to day business of the Lochaber Partnership.

The day to day business of the Community Planning Partnership takes place through the two thematic fora - Lochaber District Partnership and the Lochaber Economic Development and Employability Forum.

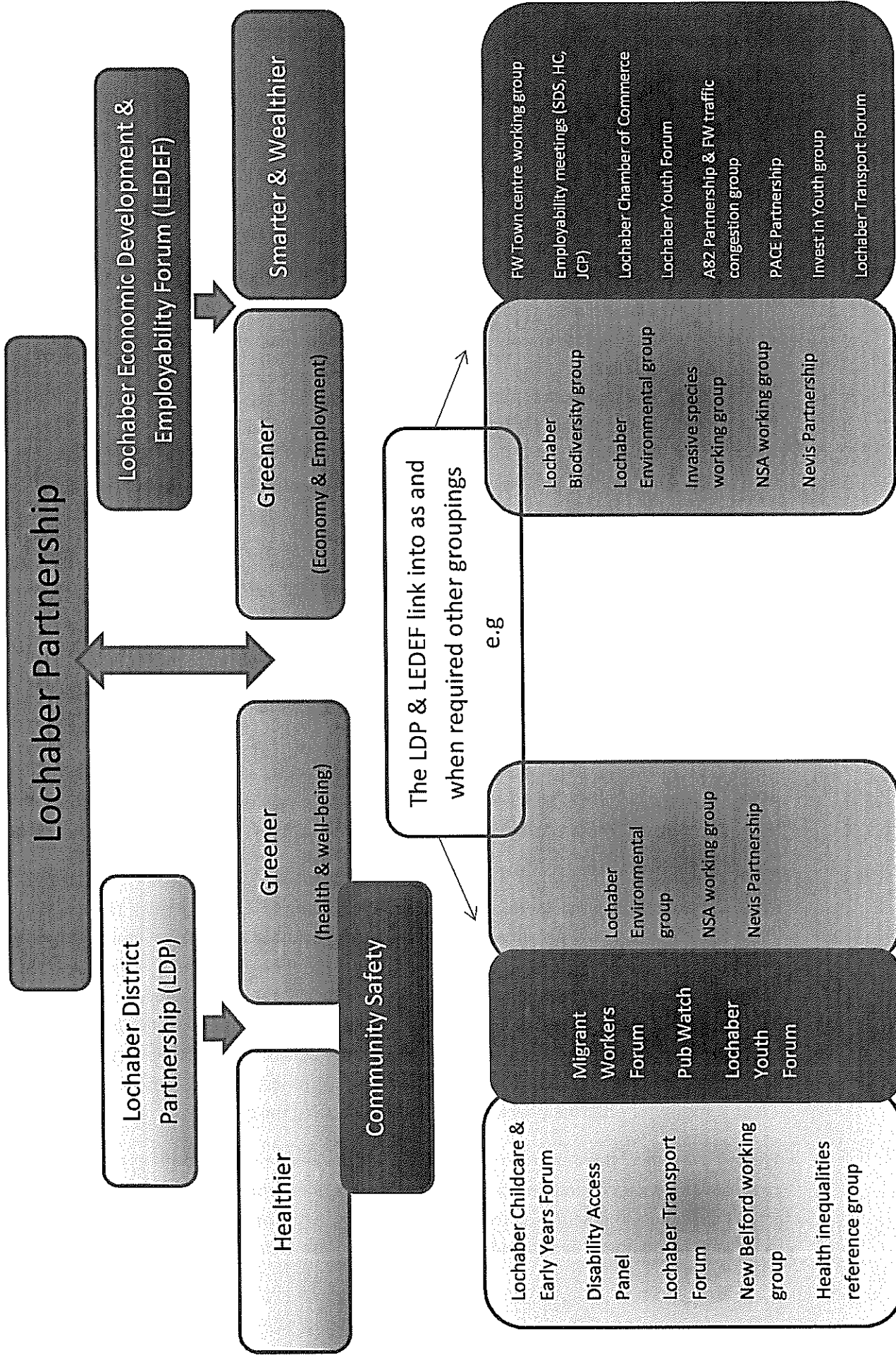
Both fora also operate as required with **sub-groups** or link to existing groups where they exist, which allows for more detailed working to take place around specific matters of priority. Working this way also allows for the inclusion of specific community interest or professional expertise.

The Lochaber District Partnership meets to consider health, social care, well-being and community safety matters. It meets four times a year and its agenda's include a 'spotlight' to allow for more extensive discussion on matters of community interest, concern and development. The Forum is facilitated by Highland Council.

The Lochaber Economic Development and Employability Forum meets to consider economic development and employability matters affecting Lochaber. It meets four times a year. The Partnership day to day works alongside and with a number of groups and initiatives including the Developing young workforce group, CLD plan, Economic development projects, community initiatives and areas of highest need. The Forum was facilitated by the Lochaber Chamber of Commerce supported by HIE however is currently in abeyance due to the establishment of a new 'business' grouping facilitated by the Chamber of Commerce (LEDEF has struggled to replace the Chair & facilitator after the Chamber pulled out of leading the group).

Elected members have a place at both Fora and ensure appropriate matters are directed as necessary to elected members business meetings or more formally to the Lochaber Area Committee. The Lochaber Partnership is currently in discussion with members in reference to formalising its relationship with the Area Committee.

Community Planning Structure in Lochaber



The Highland Council
Communities and Partnerships Committee
28 September 2016

Agenda Item	10
Report No	CP 23/16

Taking Forward Community Partnerships - Update

Report by Acting Head of Policy

Summary

This report provides an update on the introduction of Community Partnerships in Highland. Members are asked to note the developments to date and the next steps to establish Community Partnerships.

1. Background

- 1.1 The importance of localism and decision making at a local level has underpinned the need to establish partnership forums across all parts of Highland. The Community Empowerment and Public Bodies (Joint Working) Acts have also set out new duties (details at appendix 1) that require planning to take place at a local level. To enable this to happen, it was proposed to establish Community Partnerships across Highland.
- 1.2 The Community Planning Partnership Board agreed to establish Community Partnerships at its meeting on 30 June 2016. This report provides an update on the work undertaken over the summer to take forward Community Partnerships and the next steps in the process.

2. Establishing Community Partnerships

- 2.1 The Community Planning Partnership (CPP) Board agreed to establish 9 Community Partnerships for the Highland area at its meeting on 30 June 2016. The partnerships are:
- Caithness
 - Sutherland
 - East Ross
 - Mid Ross
 - Skye, Lochalsh and Wester Ross
 - Lochaber
 - Inverness City Area
 - Nairn
 - Badenoch and Strathspey
- 2.2 The Partnerships would be based primarily on the geography of the former District Partnerships, with the District Partnerships being incorporated into the new arrangements. There are some boundary amendments which need to be agreed around Assynt, Ardgay, Fort Augustus and Ardersier. The Community Planning Partnership Board will be asked to agree the final boundaries for the new partnerships at its meeting on 7 October 2016.

- 2.3 One of the new duties for Community Planning within the Community Empowerment Act is that Community Planning is now a shared responsibility amongst 5 named partners – NHS Highland, Police Scotland, Scottish Fire and Rescue Service, Highlands and Islands Enterprise and Highland Council. The CPP Board agreed that the responsibility for leading each of the Community Partnerships and also for supporting the CPP Board and Chief Officers Group (COG), should be shared going forward. The support will include chairing the partnership, providing the secretariat and responsibility for driving the agenda.
- 2.4 The CPP Board will be asked to agree on 7 October 2016 that the following agencies support each partnership for a period of 3 years, following which this will be rotated.

Community Partnership	Lead Agency
Caithness	HIE
Sutherland	Police Scotland
East Ross	SFRS
Mid Ross	NHS Highland
Skye, Lochalsh and West Ross	HIE
Lochaber	NHS Highland
Inverness	Highland Council
Nairn	Police Scotland
Badenoch and Strathspey	SFRS

It is proposed that each agency will support 2 partnerships, with the exception of the agency supporting the Inverness Community Partnership (i.e. the Council), given the size of that partnership and the likely sub-group structure which will be required for that partnership to operate effectively.

- 2.5 The CPP Board will also be asked to agree a timetable for a shared approach to supporting the Board and COG. In year 1, it is recommended that the Council support and Chair the COG and NHS Highland support and Chair the CPP Board.
- 2.6 The CPP Board agreed an initial series of guidance for Community Partnerships. This can be found at appendix 2. Over the summer, work has been ongoing to further develop the supports which will be required for the new partnerships. This has included:
- looking at a framework to support the plans required by each partnership – adult, children and locality plans;
 - a shared dataset and self-assessment checklist;
 - setting out the roles and responsibilities of each partnership – the role of the Chair but also each individual partnership member;
 - considering a set of values and behaviours to assist partnerships;
 - outline agendas and key actions for partnerships at their first meetings.

- 2.7 To ensure that those involved in the new partnerships have a clear understanding of their role and purpose, a development day is planned for the 30 September. This day is targeted at officers from the partner organisations who will be involved in each of the new partnerships. Former District Partnership Chairs and Local Committee Chairs have also been invited. Separate sessions with Highland Council members will be held during October.
- 2.8 The development day, Delivering Community Partnerships, will focus on building understanding of the national and local context and outlining how this is being taken forward locally. It is also an opportunity for shaping the new partnerships; sharing ideas and next steps. The day will be an opportunity to explore what further supports are needed for the partnerships to operate effectively and what a good partnership may look like. One of the key duties of the Empowerment Act is the involvement and engagement of communities and the day will provide a chance to consider how best communities can be involved and engaged in the new partnerships. This structure will be repeated within the separate development sessions held with Members.
- 2.9 The feedback from the development day and Member sessions will assist in further developing the supports and guidance for the new partnerships. Going forward it is recognised that ongoing support will be required. Initially, it is proposed that the Chairs of the partnerships meet twice annually with the officers from the COG to allow sharing of experience and identification of any challenges or supports required.

3. Next Steps

- 3.1 The first meetings of the new partnerships will begin from October onwards. These first meetings will be an opportunity for partners to consider wider membership, how they wish to structure their meetings and consider how they will deliver on the planning requirements. How each partnership develops will very much depend on the local partners. Updates on the implementation of the new partnerships will be reported to future meetings of this committee.

4. Implications

- 4.1 Resource: Partners have agreed to jointly resource supporting the local partnerships across Highland.

Legal: The new arrangements will help the Council and its partners deliver on new duties contained within the Community Empowerment Act as well as the Public Bodies (Joint Working) Act and the Community Learning and Development Regulations.

Equalities: The new legal duty on CPPs to reduce inequality arising from socio-economic disadvantage should enable better partnership action for groups in the community with protected characteristics. Inequality and disadvantage are often associated with protected characteristics e.g. gender, age, disability, ethnicity and sexual orientation.

Climate Change/Carbon Clever: None identified.

Risk: There is a risk that the Highland CPP does not comply with the new legislation. This is being mitigated by taking early action with partners in advance of the new duties coming into place.

Gaelic: None identified.

Rural implications: Arrangements for taking forward community planning are proceeding in rural areas of Highland.

5. Recommendation

Members are asked to note the developments to date and the next steps to establish Community Partnerships.

Date: 16-9-16

Author: Alison Clark, Acting Head of Policy Tel (01463) 702512

Appendix 1: Summary of New Community Planning Duties

Appendix 2: Initial Guidance Agreed for Community Partnerships

Summary of New Duties

Community Planning duties through the Community Empowerment Act:

Who should be involved in community planning – in Highland there are 15 public bodies to be involved and that would form the Community Planning Partnership. The Partnership will agree how partners contribute e.g. taking part in a particular outcome or across them all. The listed bodies must work together and work with any community body who wishes to take part.

Who leads community planning – this is now a shared duty between 5 public bodies – the Council; NHS Highland, HIE, Police Scotland and Scottish Fire and Rescue Service.

What the CPP needs to do – the CPP must act to reduce inequalities of outcome resulting from socio-economic disadvantage. It must produce a Local Outcome Improvement Plan and also Locality Plans.

Local Outcome Improvement Plan (LOIP) – will replace the SOA and needs to demonstrate how the Partnership will respond to national outcomes. The LOIP needs to outline key local priorities but also to reflect improving outcomes and tackling inequalities. The plan must be evidence based and be developed involving communities. Statutory partners are responsible for delivering the aims however other local bodies may also be included. The first plan is due in October 2017.

Locality Plans – at a local level in order for partners to tackle inequalities for communities facing disadvantage and make it easier for community bodies to be involved. The plans should be evidence based. The statutory guidance notes that the CPP should use its “understanding of local needs, circumstances and opportunities to identify those localities for which it should undertake locality planning.” The geography for these Locality plans is for the CPP to decide but it is expected that they reflect natural communities. It is proposed to use a combination of the Socio Economic Performance Index (SEP – identifying rural communities) and SIMD, to identify the communities on which the Partnership initially completes Locality Plans for. The first Locality Plans are expected by October 2017.

Supporting community bodies to participate – is a key component of the Empowerment Act in general and specifically in relation to Community Planning. The Partnership will have a duty to support community bodies to participate at all levels therefore it is particularly important for new local arrangements for community planning to be established as organising such involvement at a Highland level would not be feasible as most community bodies, volunteering and community action are local.

Community Planning duties through Public Bodies (Joint Working) (Scotland) Act 2014 and the Requirements for Community Learning and Development (Scotland) Regulations 2013.

The Public Bodies legislation establishes the new arrangements for the integration of health and social care services. It includes the requirement for each partnership to have a strategic plan, and in Highland this includes local plans at an area level.

The Community Learning and Development regulations, made under the powers of the 1980 Education (Scotland) Act, require the local authority to work with partners to develop local CLD plans that target individuals and groups with greatest needs. The Highland CPP has determined this should be undertaken for localities and it is anticipated that Locality and CLD plans are likely to be one and the same given their focus on inequality and the most vulnerable.

Initial Guidance Agreed for Community Partnerships

Name

- Each local partnership adopts the name Community Partnership and to prefix it with the locality name i.e. Caithness Community Partnership, Sutherland Community Partnership etc. This moves away from the use of 'planning' in any name which has resulted in confusion in the past but emphasises the importance of community given the new rights afforded to community bodies.

Membership

- All 5 statutory partners – Scottish Fire and Rescue service, HIE, Highland Council, NHS Highland, Police - and Third Sector representation arranged by the Highland Third Sector Interface at each Local Partnership
- Other 10 named partners would attend as and when required on a thematic basis
- Local partnerships to determine other organisational representation including community organisations

- All partners have shared and equal responsibility

Core Remit

- Developing Local Plans for Children and Adults – statutory
- Develop Locality Improvement Plans/CLD plans focusing on communities facing the greatest level of inequality as a result of socio-economic disadvantage - statutory
- Identify local actions and priorities

Meetings

- Local partnerships meet no less than 4 times annually
- Consider taking a thematic approach to meetings
- Scrutiny of local plans should be action focused and based on evidence
- Meetings should be in public but not public meetings. There should be the opportunity on each agenda for members of the public to ask questions/raise any points.

Links between Strategic and Local Partnerships

- Each Local partnership will nominate a representative to sit on the CPP Board. In most circumstances this will be the Chair.
- There will be regular meetings of the Chairs of each local partnership supported by the Chief Officers Group.

Addressing Inequality - Targeting Partnership Action

Briefing for Community Partnerships

Background

In 2015, the Community Planning Partnership (CPP) agreed to adopt the Socio Economic Performance (SEP) Index as a way of understanding inequality and deprivation in rural communities. This was in recognition that the Scottish Index of Multiple Deprivation (SIMD) is less useful for understanding deprivation in a rural context. The SIMD would continue to be used for identifying concentrations of deprivation.

What is the SEP Index

The SEP Index was developed by the James Hutton Institute and combines 20 indicators including health, income, benefits, access, education and population data. Within Highland, the highest ranking data zones identified in the SEP index are a mixture of remote small towns, accessible rural and remote rural communities.

The top quartile, as defined by SEP, encompasses 48 separate datazones across Highland. All of the rural datazones identified through the SIMD are also captured through the SEP. Rather than considering these data zones separately and in isolation, it is suggested that it is more helpful to look at them by community, by combining some data zones. This could then be helpful for identifying areas for the Partnership to target.

When considered in this way, the partnership would have 21 target communities as identified through SEP plus a further 3 urban communities in Inverness identified through SIMD (Merkinch, Hilton and Raigmore). The full list of suggested communities to target action to reduce inequalities is on the next page.

Using SEP for Locality Planning

Under the Community Empowerment Act, the CPP is required to develop Locality plans for smaller areas where there are 'significantly poorer outcomes'. These plans need to be evidence based and guidance indicates that they should reflect natural communities. It has been agreed by the CPP Board that the SEP and SIMD indices be used by the Partnership to assist with the evidence base for identifying and prioritising where locality planning is undertaken. It will be for each Community Partnership to determine their priority areas but the SIMD and SEP indices will assist in this process.

Proposed Communities to Target for Partnership Action

Community	Identified through SEP	Identified through SIMD
Ardersier	Yes	
Nairn	Yes	
Lybster and Dunbeath	Yes	
Castletown	Yes	
Thurso	Yes	
Wick	Yes	Yes
Alness	Yes	Yes
Invergordon	Yes	Yes
Milton, Kildary and Balintore	Yes	Yes
Tain	Yes	
Fort William	Yes	
Caol	Yes	
Kinlochleven	Yes	
Conon Bridge	Yes	
Muir of Ord	Yes	
Dingwall	Yes	Yes
Kyle of Lochalsh	Yes	
Portree and North East Skye	Yes	
Brora	Yes	
Golspie	Yes	
Helmsdale and Kinbrace	Yes	
Inverness Merkinch		Yes
Inverness Hilton		Yes
Inverness Raigmore		Yes