

Highland Community Planning Partnership

Chief Officers' Group – 26 April 2018

Agenda Item	6.
Report No	COG 04/18

Annual Participation Measure (16-19yrs) – SIMD Analysis

Anthony Standing SDS

Summary

This report presents the percentage of 16 to 19 year olds in a participating status by the 20% most and least deprived areas of the SIMD between the 2016 and 2017 Annual Participation Measures (APM) and covers an analysis of the Highland area and also provides comparisons with other Highlands & Islands local authority areas

1. Background

The Head of Operations, North Region, Skills Development Scotland (SDS), provided an update on the Participation Measure which, it was explained, had been developed as a key measure of success in relation to the National Performance Framework indicator "Increase the proportion of young people in learning, training or work". It was a national local authority level measure and a summary of the 2017 Annual Participation Measure for the Highland Council area was tabled. Further information was available on the SDS website (<http://www.skillsdevelopmentscotland.co.uk/>) and it was confirmed that data could be broken down by gender, geographical area etc.

2. The meeting agreed that a report be presented to a future meeting of the COG highlighting the issues on which the CPP might focus; and

The meeting agreed to raise awareness of the SDS data hub and the capacity to break down data by geographical area at the Community Partnerships Development Day.

3. This report will provide more analysis as requested

Recommendations

The COG is asked to:

- 1) Note the attached report and the narrowing of the participation gap in Highland
- 2) Agree that the analysis be used in discussion within relevant Community Partnerships for local LOIP actions

North Region APM SIMD Analysis

Analysis of the Participation Gap within the North Region Local Authorities

24/04/2018

This report presents the percentage of 16 to 19 year olds in a participating status by the 20% most and least deprived areas of the SIMD between the 2016 and 2017 Annual Participation Measures (APM)¹

Overall in the north region the participation gap between the 20% most and least deprived has narrowed, and this is also the case for all Local Authorities within the North Region. This has been due to an increase in participation within the 20% most deprived areas and a slight decrease within the 20% least deprived areas.

Background to Sub Local Authority Reporting

As stated in the 2017 APM report², all school pupils are assigned to the Local Authority of the School they attend (apart from those residential schools who are assigned to the Local Authority of their home postcode). It was deemed desirable for those in the APM cohort who had recently left school to retain this connection to the Local Authority of the school they had attended. This connection was to last for up to a year after leaving school, and after this point in time the individual's postcode would be used to identify the Local Authority. Individual's who have an invalid or no postcode information are assigned to the Local Authority of the centre their record is attached to.

In order to assign an individual to a sub Local Authority geography (i.e. SIMD area, electoral ward, data zone) the customer postcode must be used. This differs from the existing methodology noted above - a customer attending a school in one local authority may live at an address in another. Where this scenario occurs, these individuals will not be included in any sub Local Authority analysis.

Secondly, not all of the APM cohort has a valid Scottish Postcode, therefore they cannot be included in sub Local Authority analysis.

Table 1 on the following page shows that by using our methodology the North Region is able to provide sub Local Authority analysis for over 98.5% of the 16 to 19 year old APM cohort reported in the both the 2016 and 2017 annual publications.

¹ <https://www.skillsdevelopmentscotland.co.uk/publications-statistics/statistics/participation-measure/?page=1&statisticCategoryId=7&order=date-desc>

² http://www.skillsdevelopmentscotland.co.uk/media/43580/2017_annual-participation-measure-report-29th-august-2017.pdf

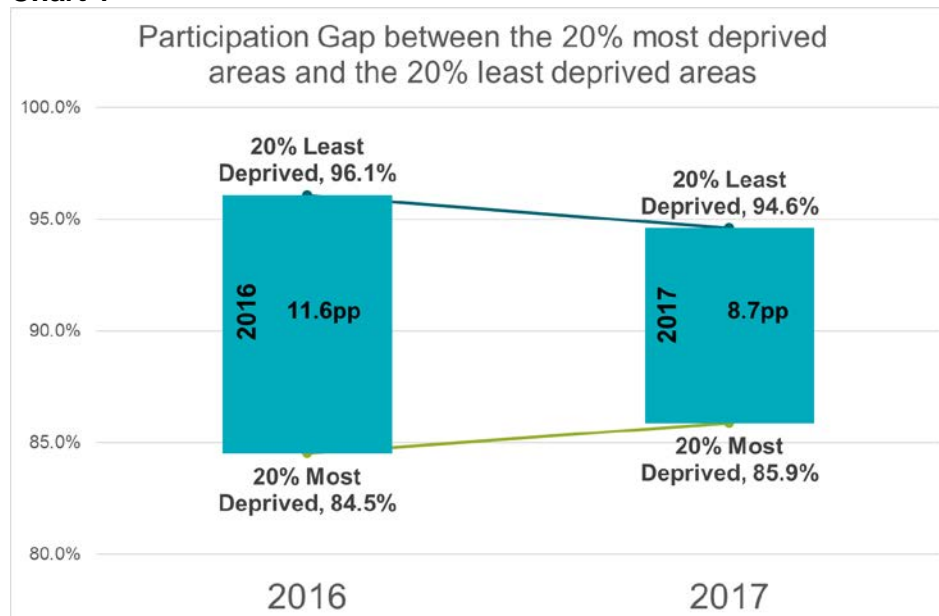
Table 1

North Region LAs	2016 APM					2017 APM				
	APM Cohort	Available for SIMD Analysis	%	Not Available for SIMD Analysis	%	APM Cohort	Available for SIMD Analysis	%	Not Available for SIMD Analysis	%
Argyll & Bute	3,642	3,570	98.0%	72	2.0%	3,572	3,508	98.2%	64	1.8%
Eilean Siar	1,136	1,131	99.6%	5	0.4%	1,085	1,080	99.5%	5	0.5%
Highland	10,449	10,300	98.6%	149	1.4%	10,360	10,220	98.6%	140	1.4%
Moray	4,236	4,163	98.3%	73	1.7%	4,085	4,039	98.9%	46	1.1%
Orkney Islands	929	919	98.9%	10	1.1%	874	862	98.6%	12	1.4%
Shetland Islands	1,116	1,107	99.2%	9	0.8%	1,096	1,089	99.4%	7	0.6%
North Region	21,508	21,190	98.5%	318	1.5%	21,072	20,798	98.7%	274	1.3%

North Region SIMD Analysis

The percentage of 16 to 19 year olds living in the 20% most deprived areas with a participating status has increased from 84.5% to 85.9% between APM 2016 and 2017. **Chart 1** shows that the participation gap between the 20% most and least deprived areas has narrowed. In the 2016 APM the gap was 11.6 percentage points (pp) and in the 2017 APM the gap was 8.7pp.

Chart 1



The following sections will present the same analysis for the Local Authorities within the North Region, however the Local Authorities of Orkney Islands / Shetland Islands / Eilean Siar do not have any 16 to 19 year olds within the APM cohort living within the 15% most deprived areas. This because that within the SIMD 20163 there were no areas within these two Local Authorities that were ranked within the 20% most deprived.

³ <http://www.gov.scot/Topics/Statistics/SIMD>

Highland

The percentage of 16 to 19 year olds living in the 20% most deprived areas with a participating status has increased from 84.9% to 85.6% between APM 2016 and 2017. **Chart 2** shows that the participation gap between the 20% most and least deprived areas has narrowed. In the 2016 APM the gap was 11.2pp and in the 2017 APM the gap was 9.6pp.

Chart 2

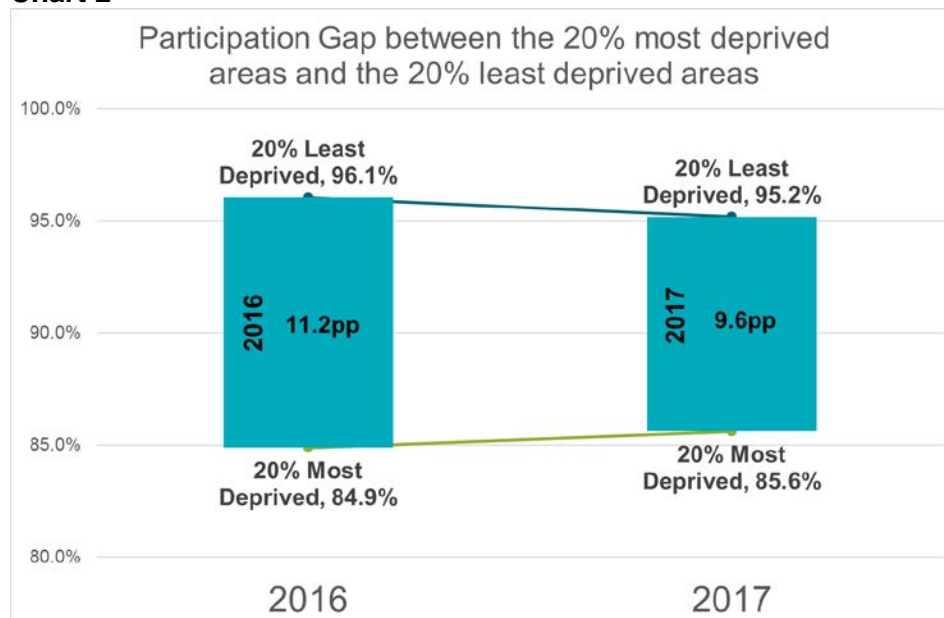


Table 2 shows the percentage point change between 16 to 19 year olds within participation sub groups by Highland 20% categories. Full percentages for 2016 and 2017 APM can be seen in **Appendix 1**. Highland areas ranked within the 20% most deprived of the SIMD 2016 can be seen in **Appendix 2**.

Table 2 shows that the increase in participation within the 20% most deprived areas has been driven by an increase in the percentage of 16 to 19 year olds within education. This has mainly come from an increase in 16 to 19 year olds in school and those in Higher Education. It is also important to note that there has been a reduction in those with an unconfirmed status which has aided the increase in participation.

Table 2

Highland SIMD Areas	Participating	Within Education	Within Employment	Other Training & Development	Not Participating	Unemployed Seeking	Unemployed Not Seeking	Status Unconfirmed
20% Most Deprived	+0.7pp	+5.2pp	-3.0pp	-1.4pp	+0.2pp	-0.1pp	+0.3pp	-0.9pp
20-40%	-0.3pp	-2.1pp	+1.9pp	-0.1pp	-0.1pp	-0.4pp	+0.3pp	+0.4pp
40-60%	-0.4pp	-2.3pp	+1.7pp	+0.3pp	-0.3pp	-0.5pp	+0.2pp	+0.7pp
60-80%	-1.0pp	-3.1pp	+1.7pp	+0.3pp	+0.4pp	+0.1pp	+0.3pp	+0.6pp
20% Least Deprived	-0.9pp	-1.0pp	0.5pp	-0.4pp	-0.1pp	0.0pp	-0.1pp	0.9pp

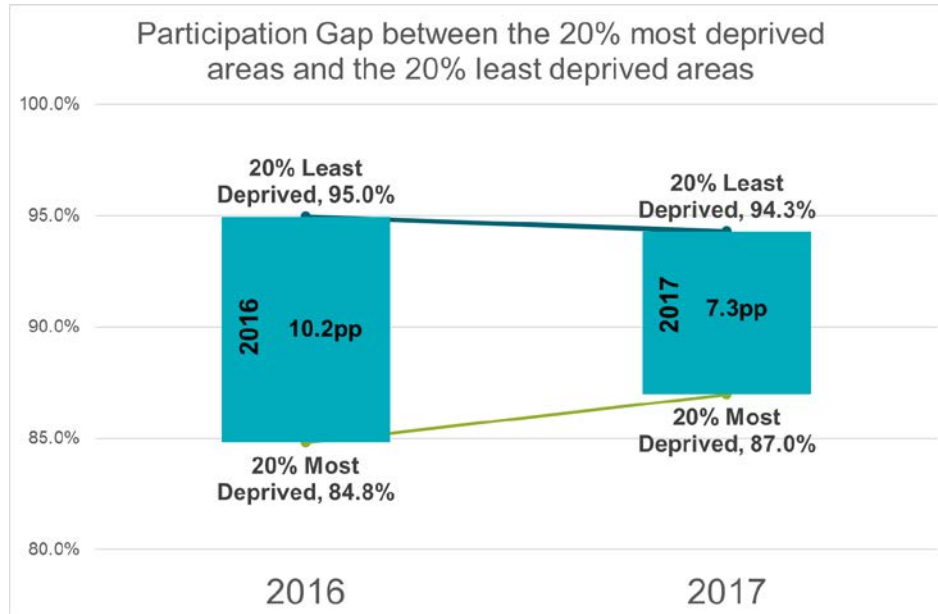
The slight decrease in participation within the 20% least deprived areas has been driven by a decrease in the percentage of 16 to 19 year olds within education and an increase of those with an unconfirmed status.

Skills Development Scotland continues to work with the Scottish Government and HMRC to make progress in obtaining employment related data made possible through provisions within the Digital Economy (Act) 2017. Information sharing will improve service delivery and further enhance the annual participation measure. This should bring benefits in reducing the number of unconfirmed statuses

Argyll and Bute

The percentage of 16 to 19 year olds living in the 20% most deprived areas with a participating status has increased from 84.8% to 87% between APM 2016 and 2017. **Chart 3** shows that the participation gap between the 20% most and least deprived areas has narrowed. In the 2016 APM the gap was 10.2pp and in the 2017 APM the gap was 7.3pp.

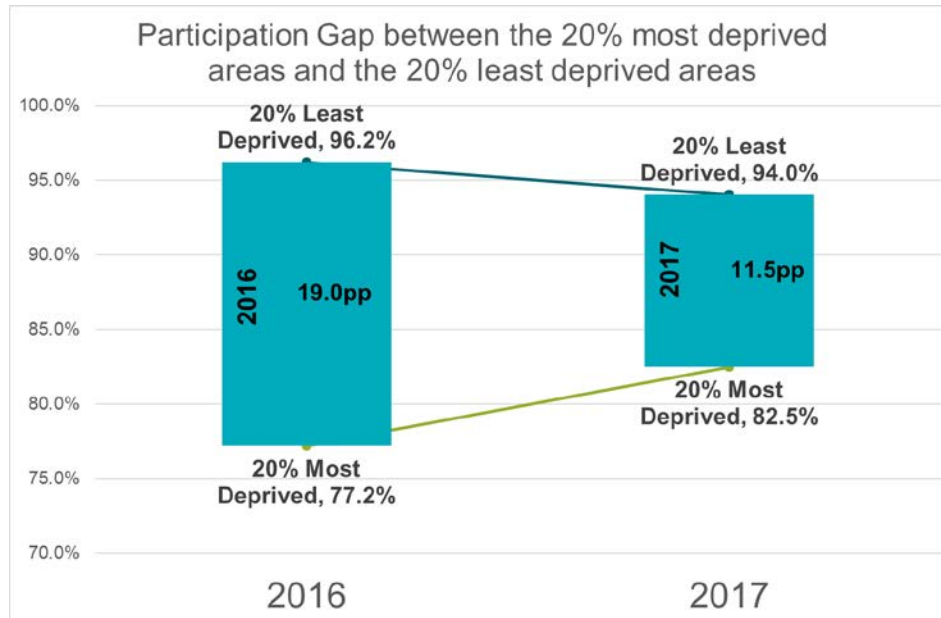
Chart 3



Moray

The percentage of 16 to 19 year olds living in the 20% most deprived areas with a participating status has increased from 77.2% to 82.5% between APM 2016 and 2017. **Chart 4** shows that the participation gap between the 20% most and least deprived areas has narrowed. In the 2016 APM the gap was 19pp and in the 2017 APM the gap was 11.5pp.

Chart 4



Appendix 1

2016 APM – Highland Percentage of 16 to 19 Year Olds by APM Participation Sub Group

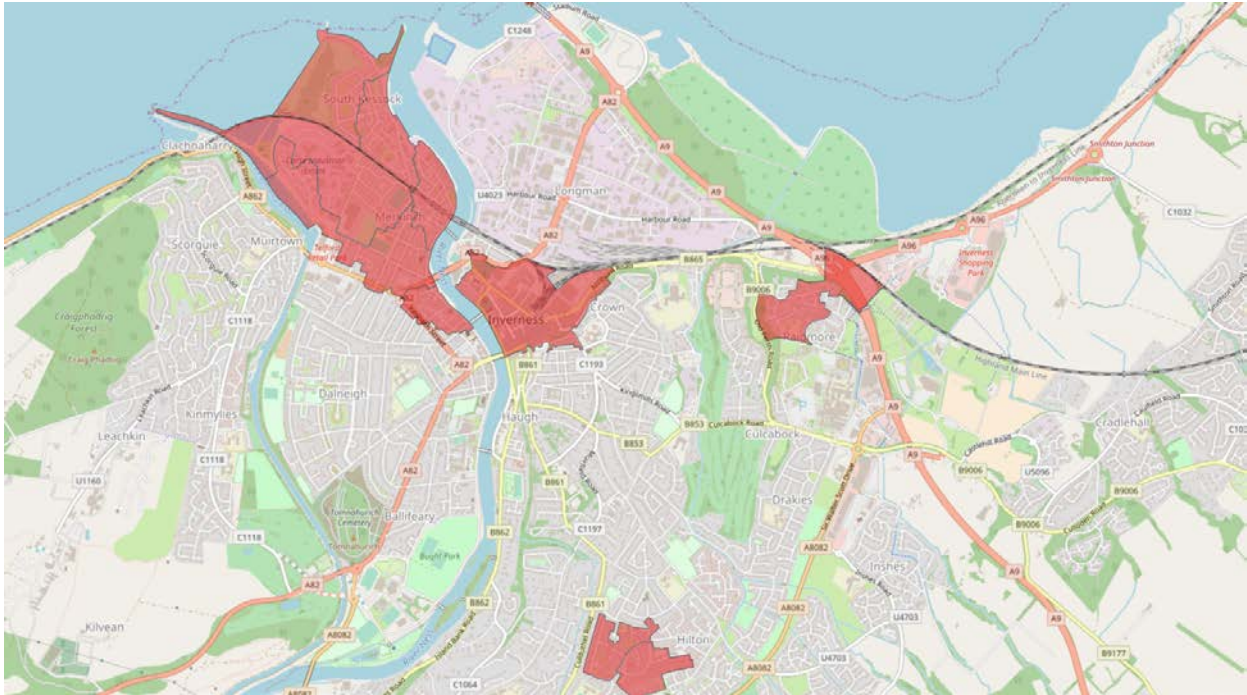
Highland SIMD Areas	Participating	Within Education	Within Employment	Other Training & Development	Not Participating	Unemployed Seeking	Unemployed Not Seeking	Status Unconfirmed
20% Most Deprived	84.9%	56.0%	25.0%	3.9%	6.0%	3.1%	2.9%	9.1%
20-40%	91.3%	62.9%	25.6%	2.9%	3.3%	1.8%	1.5%	5.4%
40-60%	94.0%	70.3%	22.4%	1.3%	2.1%	1.1%	1.0%	3.8%
60-80%	95.5%	74.8%	19.6%	1.1%	1.2%	0.7%	0.5%	3.3%
20% Least Deprived	96.1%	76.2%	18.5%	1.4%	1.0%	0.5%	0.4%	3.0%

2017 APM – Highland Percentage of 16 to 19 Year Olds by APM Participation Sub Group

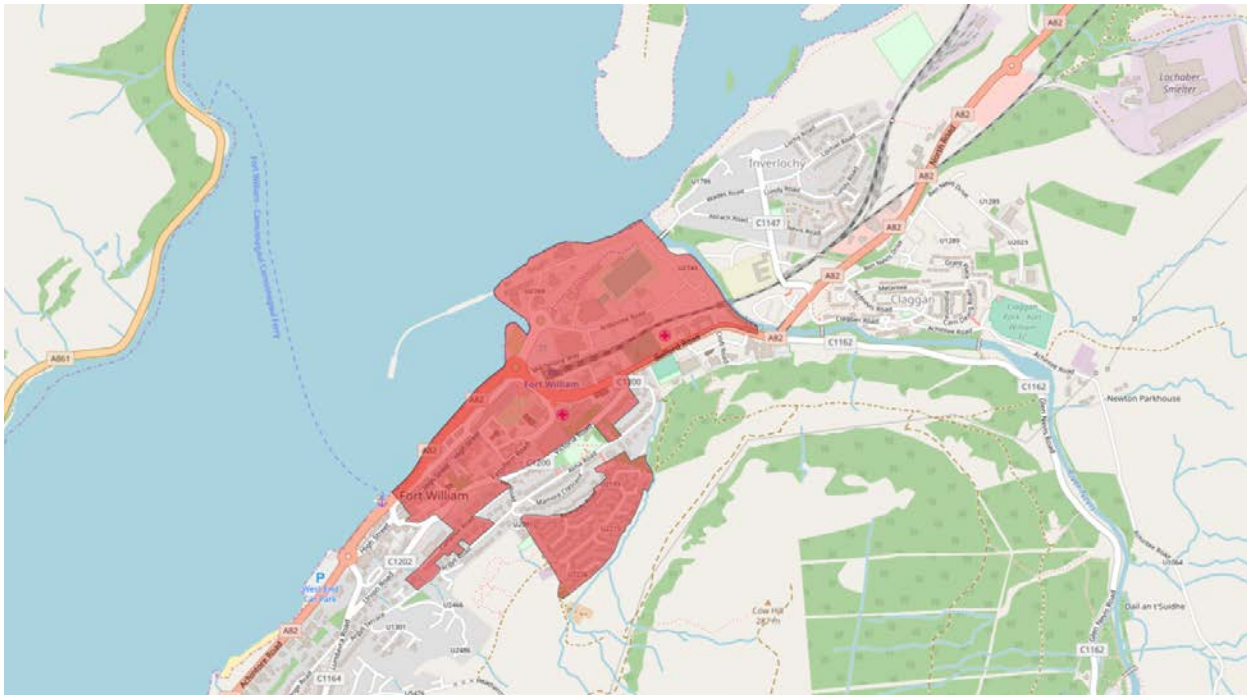
Highland SIMD Areas	Participating	Within Education	Within Employment	Other Training & Development	Not Participating	Unemployed Seeking	Unemployed Not Seeking	Status Unconfirmed
20% Most Deprived	85.6%	61.1%	22.0%	2.4%	6.2%	3.1%	3.2%	8.2%
20-40%	91.0%	60.7%	27.5%	2.8%	3.2%	1.4%	1.8%	5.8%
40-60%	93.6%	68.0%	24.0%	1.6%	1.9%	0.6%	1.2%	4.5%
60-80%	94.5%	71.7%	21.3%	1.4%	1.6%	0.8%	0.8%	3.9%
20% Least Deprived	95.2%	75.3%	18.9%	1.0%	0.9%	0.5%	0.4%	3.9%

Appendix 2 – Highland Areas Ranked Within 20% Most Deprived of SIMD 2016

Inverness



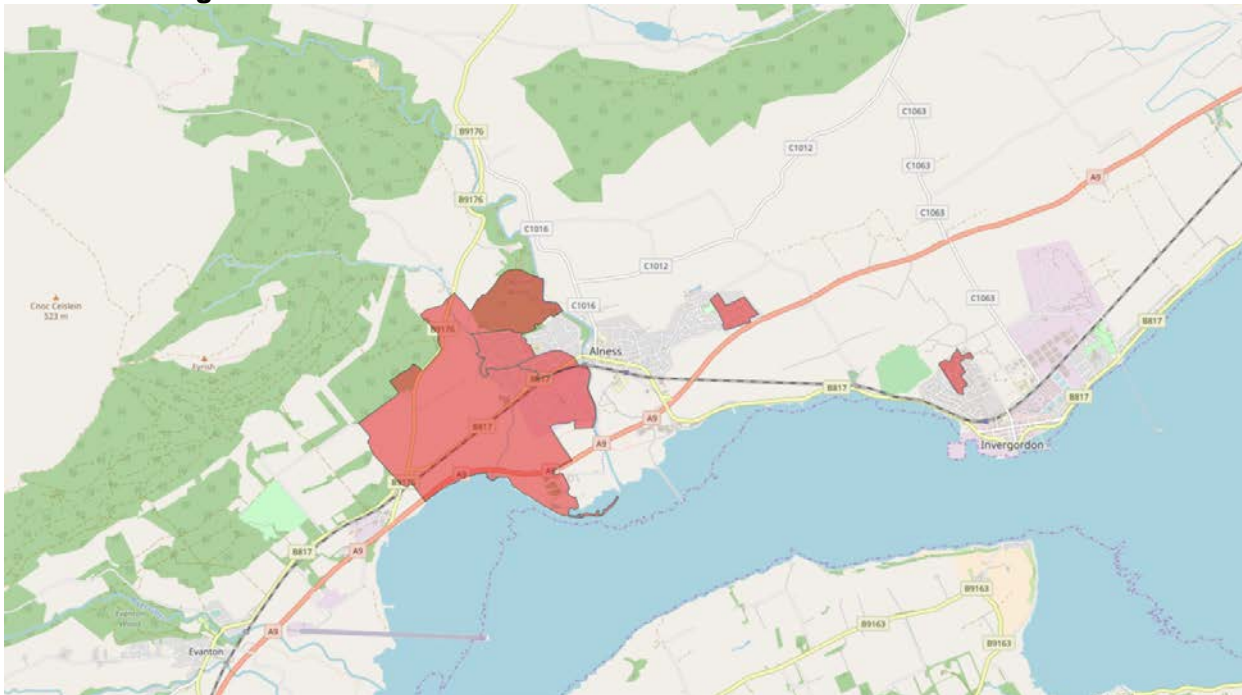
Fort William



Nairn



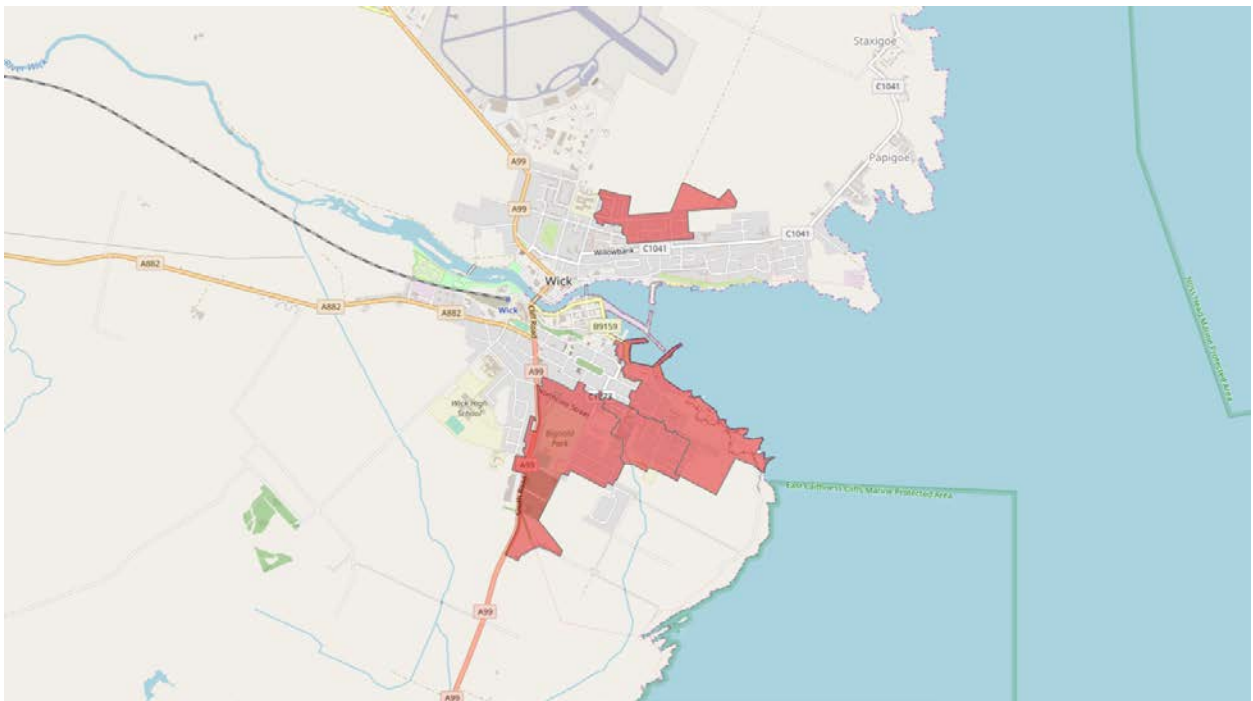
Alness / Invergordon



Seaboard



Wick



Thurso

