

Agenda Item	9
Report No	CIA/18/20

HIGHLAND COUNCIL

Committee: City of Inverness Area Committee

Date: 27 August 2020

Report Title: B9006/B9091 40mph Speed Limit at Croy

Report By: Executive Chief Officer Infrastructure and Environment

1. Purpose/Executive Summary

- 1.1 The potential for a new speed limit at Croy has involved discussions over the last 18 months with Ward Members, the Community Council, and the housing developer building new houses at Croy.
- 1.2 This report seeks approval to proceed with the statutory process to advertise and make the speed restriction order.

2. Implications

- 2.1 Resource: The costs of implementing the proposed speed limit order (new signs, markings and speed indication devices) will be met by the housing developer.
- 2.2 Legal: Feedback from Legal has been incorporated in this report. The introduction of a new speed limit must comply with the statutory procedure
- 2.3 Community (Equality, Poverty and Rural): Requests for a reduced speed limit have been received from the community. The speed limit will improve the situation for all road users.
- 2.4 Climate Change / Carbon Clever: No Implications
- 2.5 Risk: No implications
- 2.6 Gaelic: None

3. Recommendations

- 3.1 Members are asked to:
- i. Note the details of the proposed 40mph speed limit at Croy
 - ii. Delegate Executive Chief Officer Infrastructure and Environment to:
 - a. Proceed with the advertisement of the proposed speed limit order;
 - b. Make the Order should there be no unresolved objection;
 - c. Bring back a further report in the event of unresolved objection

4. Background

- 4.1 Concerns have previously been raised about road safety/speeding on the section of the B9006 and B9091 at Croy. The current speed limit is 60mph. During the changed road layout associated with the construction of the new access to the residential development at Croy speed surveys were carried out during August 2019. The results indicate speeds appropriate for the introduction of a permanent 40mph speed limit with associated signs, markings and speed indication devices.

5. Consultation with Statutory Consultees

- 5.1 Consultation letters were issued to statutory consultees on 16th July 2020. No concerns/objections have been raised by any consultee.

6. 40mph Speed Limit Order

- 6.1 The extent of the proposed speed limit is an overall distance of 1200m.
- 6.2 Following consultation between officers and the house builder a speed limit proposal plan has been prepared by their transport consultant. The plan, schedule and statement of reasons are attached at **APPENDIX A**.
- 6.3 The approach for publication of the proposed order includes:
- a notice in a local newspaper;
 - displaying notices on parts of the road;
 - displaying documents on Council website;
 - posting easily readable documents relating to the proposed order at a sensible height in Service Point window and various public spaces such as local Post Office, Community Hall notice board etc together with a phone number for people to request copies in case they encounter difficulty reading the docs.

In addition it is proposed to investigate using the "[Tellmesotland](#)" public notices web site to ensure the draft order is widely available for review during the Covid-19 restrictions.

Designation: Executive Chief Officer Infrastructure and Environment

Date: 31 July 2020

Author: Richard Gerring (Transport Planning Manager)

Background Papers: held by author

**THE HIGHLAND COUNCIL
(B9006 & B9091 SPEED RESTRICTION) (40MPH SPEED LIMIT) ORDER 20****

SCHEDULE 1

B9006

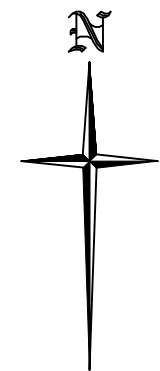
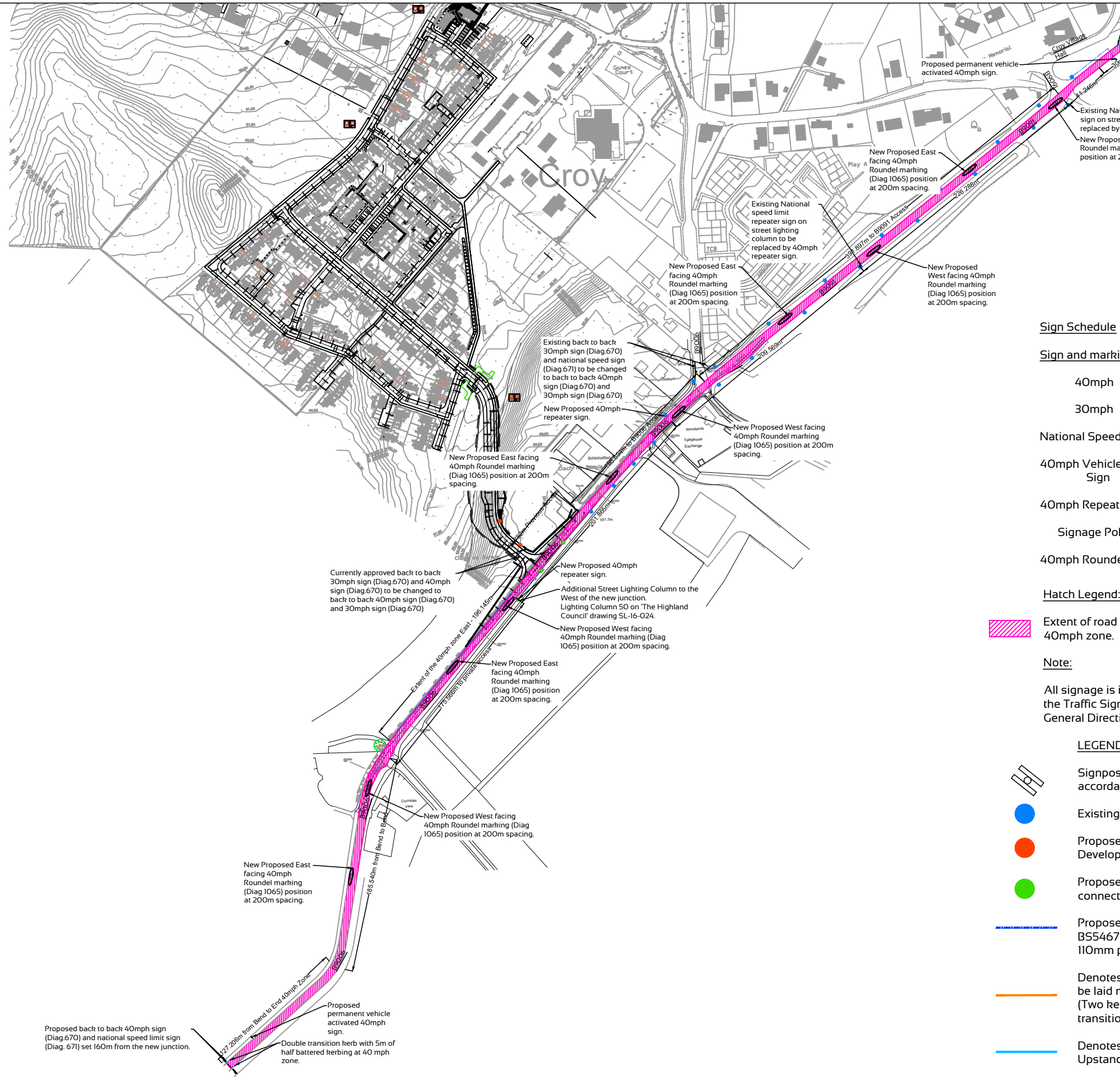
Commencing at its junction with the B9091 extending in a westerly direction for a distance of 740m or thereby.

B9091

Commencing at its junction with the B9006 extending in an easterly direction for a distance of 460m or thereby.

Statement of Reasons

This order is being promoted to ensure road safety for all road users at Croy by reducing the speed of vehicles. This supports the aim of the Scottish Road Safety Framework for a reduction in the numbers of those killed and those seriously injured on Scottish roads.



Sign Schedule

Sign and marking type	Diagram Reference	Quantity
40mph	670	8
30mph	670	8
National Speed Limit	671	4
40mph Vehicle Activated Sign	-	2
40mph Repeater Sign	670	4
Signage Poles	-	22
40mph Roundel Markings	1065	10

Hatch Legend:

Extent of road subject to new 40mph zone.

Note:

All signage is in accordance with the Traffic Sign Regulations and General Directions 2016.

LEGEND

- Signpost (All signage to be located in accordance with TSRGD.)
- Existing Lighting Column
- Proposed Lighting Column Within Development
- Proposed Lighting on B9006 to be connected into existing feed
- Proposed 2.5mm3C SWA cable to BS5467 with violet outer sheath in 110mm purple duct
- Denotes Double Transition Kerb: To be laid max 8% (Two kerb lengths required to create transition)
- Denotes Half Battered 100mm Upstand Kerb

Rev	AMENDMENTS	Date	By	Eng
2.	40mph zone extended to the East	02/07/20	JLF/JLF	
1.	Updated to THC agreement	01/07/20	JLF/JLF	
	INITIAL ISSUE	29/06/20	JLF/JLF	

This drawing to be read in conjunction with:

Drawing Nos.	
Bar Schedule Nos.	

Housing Development At Croy, Inverness

Scotia Homes Ltd

B9006 Traffic Sign General Arrangement
Scale 1:3500@A3



B9006 TRAFFIC SIGN GENERAL ARRANGEMENT
Scale 1:3500

Drawn by	JLF	Contract No.	A/10444	Drawing No.	954-1	Rev.	2.
Checked by	JLF						
Engineer	JLF						