

HIGHLAND COUNCIL

Committee: Isle of Skye & Raasay Area Committee
Date: 30th November 2020
Report Title: **Portree Associated School Group Overview**
Report By: Interim Area Education & Learning Manager (West)

1. Purpose/Executive Summary

1.1 This report provides an update of key information in relation to the schools within the Portree Associated School Group (ASG) and provides useful links to further information in relation to these schools.

1.2 The primary schools in this area serve over 650 pupils, with the secondary school serving 490 young people.

ASG roll projections can be found at:

<http://www.highland.gov.uk/schoolrollforecasts>

2. Recommendations

2.1 Members are asked to: scrutinise and note the content of the report

School Information

Secondary – [Link to Portree High webpage](#)

Primary

<http://www.highland.gov.uk/directory/44/schools/search>

School	Link to School Webpage
Broadford Primary	Broadford webpage
Bun-Sgoil Ghaidhlig Phort Rìgh	Bun-Sgoil Ghàidhlig Phort Rìgh webpage
Bun-Sgoil Shlèite	Bun-Sgoil Shlèite webpage
Carbost Primary©	Carbost webpage
Dunvegan Primary©	Dunvegan webpage
Edinbane Primary©	Edinbane webpage
Elgol Primary	Elgol webpage
Kilmuir Primary©	Kilmuir webpage
Knockbreck Primary (Dunvegan)©	Knockbreck (Skye) webpage
Macdiarmid Primary©	MacDiarmid webpage
Portree High School	Portree High webpage
Portree Primary	Portree webpage

Raasay Primary
 Staffin Primary©
 Struan Primary©

[Raasay webpage](#)
[Staffin webpage](#)
[Struan webpage](#)

© Denotes school part of a “cluster” management arrangement

School	Date of Latest Published Report	Link to Education Scotland Pages
Broadford Primary	Mar-09	Broadford Primary Inspection
Bun-Sgoil Ghaidhlig Phort Rìgh		
Bun-Sgoil Shlèite	May-10	Sleat Primary Inspection
Carbost Primary	Aug 2012 (Follow Up)	Carbost Primary Inspection
Dunvegan Primary	Dec-07	Dunvegan Primary Inspection
Edinbane Primary	Nov-09	Edinbane Primary Inspection
Elgol Primary	Aug-10	Elgol Primary Inspection
Kilmuir Primary	May 2009 (Follow Up)	Kilmuir Primary Inspection
Knockbreck Primary (Dunvegan)	May-10	Knockbreck Primary (Skye) Inspection
Macdiarmid Primary	Apr-12	MacDiarmid Primary Inspection
Portree High School	June-18	Portree High Inspection
Portree Primary	Jan-09	Portree Primary Inspection
Raasay Primary	Nov-11	Raasay Primary Inspection
Staffin Primary	Mar-18	Staffin Primary Inspection
Struan Primary	Aug-11	Struan Primary Inspection

School/Nursery Inspections

Link to Care Inspectorate website: [Find a care service](#)

Early Year Centre	Inspection Month	Quality of Care & Support	Quality of Environment	Quality of Staffing	Quality of Management & Leadership
Broadford Primary Nursery - EM	24 Sep 2018	5 - Very Good (I)	4 - Good (I)	Not Assessed	Not Assessed
Broadford Primary Nursery - GM	24 Sep 2018	5 - Very Good (I)	Not Assessed	Not Assessed	4 - Good (I)
Carbost Primary Nursery	06 Sep 2017	5 - Very Good (I)	Not Assessed	Not Assessed	4 - Good (I)
Dunvegan Primary Nursery	18 Jun 2019	4 - Good (I)	4 - Good (I)	Not Assessed	Not Assessed
Kilmuir Primary Nursery	17 Jun 2019	4 - Good (I)	5 - Very Good (I)	Not Assessed	Not Assessed
Knockbreck Primary (Skye) Nursery	28 Nov 2018	5 - Very Good (I)	Not Assessed	5 - Very Good (I)	Not Assessed
Macdiarmid Primary Nursery	15 Sep 2017	5 - Very Good (I)	Not Assessed	5 - Very Good (I)	Not Assessed
Portree Primary Nursery - GM	04 Sep 2017	4 - Good (I)	4 - Good (I)	Not Assessed	Not Assessed
Portree Nursery Limited	01 May 2018	5 - Very Good (I)	4 - Good (I)	5 - Very Good (I)	Not Assessed
Raasay Primary Nursery	29 May 2017	4 - Good (I)	Not Assessed	Not Assessed	4 - Good (I)
Sleat Primary Nursery	19 Jun 2019	4 - Good (I)	3 - Adequate (I)	Not Assessed	3 - Adequate (I)
Staffin Primary Nursery - GM	14 Jan 2019	4 - Good (I)	4 - Good (I)	Not Assessed	Not Assessed

Staffing

School	Teaching Full Time Equivalent (FTE)	Non-Teaching (FTE)
Broadford Primary	5.54	5.95
Bun-Sgoil Ghàidhlig Phort Rìgh	6.12	4.01
Bun-Sgoil Shlèite	5.00	2.33
Carbost Primary	2.42	0.5
Dunvegan Primary	3.97	1.24
Edinbane Primary	1.07	0.75
Elgol Primary	0.40	0.46
Kilmuir Primary	3.21	4.06
Knockbreck Primary (Dunvegan)	0.90	1.65
Macdiarmid Primary	2.11	1.51
Portree High School	33.20	15.96
Portree Primary	8.60	9.79
Raasay Primary	0.41	0.68
Staffin Primary	3.23	1.57
Struan Primary	1.07	1.22
Nursery	Teaching Full Time Equivalent (FTE)	Non-Teaching (FTE)
Broadford Primary Nursery - EM		1.95
Broadford Primary Nursery - GM		1.72
Carbost Primary Nursery		1.82
Dunvegan Primary Nursery		1.64
Edinbane Primary Nursery		0.97
Kilmuir Primary Nursery - GM		1.61
Knockbreck Primary (Skye) Nursery		0.79
Macdiarmid Primary Nursery		1.82
Bun-sgoil Ghàidhlig Phort-Rìgh		5.68
Portree Nursery Limited		6.25
Raasay Primary Nursery		0.69
Sleat Primary Nursery - EM		1.32
Sleat Primary Nursery - GM		1.23
Staffin Primary Nursery - GM		1.82

School staff information from Staff Census collected Sep 2019. Please note that only certain types of teaching posts are counted here: Normal complement, Long term sick absence replacement, secondment replacement, maternity leave replacement, other replacement, temporary contract, covering a vacancy. Teachers who teach at the school but are centrally employed are excluded.

Core staffing is calculated using the Highland Staffing Model, which takes account of national agreements for P1 to P3 class sizes. As a result, all primaries in this

ASG are staffed according to the model. The Primary Staffing Arrangements are currently being revised and the new Highland Staffing Model will be shared in due course.

In addition to core staffing for each school, a model will be used to provide an appropriate level of ASN cover to each school within the ASG. This model was approved at Adult and Children's Services Committee, 26th September 2012 (Item 9a). Report [ACS-33-12](#).

This session we are funding additional staffing for the ASG as follows:

- 4 FTE ASN teachers
- 45.5FTE PSA staff (1251.15 hours assuming FTE = 27.5hrs)

The identified level of need at start of session was:

88	Pupils at level 2
58	Pupils at level 3
37	Pupils at level 4

Funding

Unit Desc	Budget Aug 1617	Cost Per Pupil	Carry Fwd 1516
Portree High School	2,533,866	4,808	(7,090)
Broadford P.S.	348,405	6,452	2,599
Carbost P.S.	152,501	5,648	426
Dunvegan P.S.	192,494	3,774	5,404
Edinbane P.S.	94,994	10,555	1,305
Elgol P.S.	108,167	6,760	(192)
Kilmuir P.S.	217,457	12,792	(523)
Knockbreck P.S.	95,328	19,066	2,153
Kyleakin P.S.	150,258	7,155	(395)
Macdiarmid P.S.	211,751	3,850	1,544
Portree New P.S.	798,873	2,926	4,802
Raasay P.S.	91,530	8,321	3,424
Sleat P.S.	252,681	3,716	(4,912)
Staffin P.S.	164,441	11,746	(1,779)
Struan P.S.	91,261	30,420	(913)

Members are asked to note that devolved funding is generally sufficient for school needs. Figures in () are surpluses.

Buildings

School	Suitability	Condition	% Roll Capacity
Broadford Primary School	C	C	79
Bun-Sgoil Ghaidhlig Phort Righ	A	A	75
Bun-Sgoil Shleite	B	C	72
Carbost Primary School	B	C	44
Dunvegan Primary School	C	C	40
Edinbane Primary School	C	C	10
Elgol Primary School	C	B	28
Kilmuir Primary School	C	C	45
Knockbreck Primary School - Dunvegan	C	C	44
Macdiarmid Primary School	B	B	36
Portree High School	A	A	50
Portree Primary	B	B	71
Raasay Primary School	C	B	24
Staffin Primary School	C	B	58
Struan Primary School	C	C	14

Building suitability, condition and capacity levels are as reported on the 2020 School Estate Core Facts return.

Pupil Information

Pupil Destinations 16+

Leaver destination information is taken from the School Leaver Destination data collected by Skills Development Scotland (SDS) on behalf of the Scottish Government. The most recent return is based on a follow up of young people who left school between 1 August 2018 and 31 July 2019.

	% Positive Destinations		
	2016/17	2017/18	2018/19
Portree High School	96.12%	95.45%	99.03%
Highland	95.52%	95.99%	94.79%
Scotland	93.72%	94.40%	95.05%

Number of pupils leaving in school year:

Total No. Leavers	Portree High School	HIGHLAND	SCOTLAND
2016/17	103	2411	51258
2017/18	88	2441	49707
2018/19	103	2264	49717

Destinations of Pupils (%)

DESTINATION	Portree High School			HIGHLAND			SCOTLAND		
	16/17	17/18	18/19	16/17	17/18	18/19	16/17	17/18	18/19
Higher Education	26.21%	17.05%	23.30%	35.5	35.15	32.20	40.71	41.1	40.35
Further Education	16.50%	18.18%	27.18%	23.68	19.87	23.14	26.83	26.5	27.27
Training			1.94%	1.74	1.35	4.81	2.43	2.1	3.47
Employment	53.40%	59.09%	46.60%	31.31	36.62	33.88	21.97	22.7	22.92
Voluntary		1.14%		0.83	0.78	0.71	0.55	0.7	0.58
Activity Agreements				2.45	2.17		1.22	1.2	
Unemployed Seeking	0.97%			1.41	1.80	2.08	4.47	3.8	3.12
Unemployed Not Seeking	2.91%	4.55%	0.97%	1.45	1.15	1.46	1.45	1.3	1.41
Unknown				1.62	1.07	1.68	0.37	0.4	0.42

Note: National averages have been calculated from the figures for all available local authority and grant-aided schools, whereas the local authority averages are based on local authority schools only.

There are no current Activity Agreements involving former pupils of Portree High.

Pupil Attendance/Absence/Exclusions 2018/19

Scottish Government collect Attendance, Absence and Exclusions on a bi-annual basis, next reporting year is 2020-21.

SCHOOL	% Actual Attendances	% Authorised Absences	% Unauthorised Absences	No of Exclusions and Rates per 1000 Pupils	No Pupils Excluded and Rate per 1000 Pupils
Highland Primary (2019-20)	93.5%	4.9%	1.6%	7/1000	4/1000
Scotland Primary (2018-19)	94.5%	3.6%	1.9%	8/1000	
Broadford Primary School	90.8%	6.9%	2.5%	0/1000	0/1000
Bun-Sgoil Ghàidhlig Phort Rìgh	96.3%	2.7%	1.0%	0/1000	0/1000
Carbost Primary School	94.5%	4.8%	0.7%	0/1000	0/1000
Dunvegan Primary School	94.2%	5.7%	0.0	0/1000	0/1000
Edinbane Primary School	91.2%	4.2%	5.0%	0/1000	0/1000
Elgol Primary School	97.3%	1.9%	0.8%	0/1000	0/1000
Kilmuir Primary School	93.7%	6.35	0.0%	0/1000	0/1000
Knockbreck Primary School (Skye)	94.6%	5.4%	0.0%	0/1000	0/1000
MacDiarmid Primary School	93.65%	6.4%	0.0%	0/1000	0/1000
Portree Primary School	95.1%	3.7%	1.3%	0/1000	0/1000

Raasay Primary	97.5%	2.5%	0.0%	0/1000	0/1000
Sleat Primary	95.9%	3.2%	1.0%	0/1000	0/1000
Staffin Primary	95.4%	4.6%	0.0%	0/1000	0/1000
Struan Primary	95.6%	3.1%	1.4%	0/1000	0/1000

SCHOOL	% Actual Attendances	% Authorised Absences	% Unauthorised Absences	No of Exclusions and Rates per 1000 Pupils	No Pupils Excluded and Rate per 1000 Pupils
Highland Secondary (2019-20)	88.8%	7.3%	3.9%	39/1000	27/1000
Scotland Secondary (2018-19)	90.7%	5.5%	3.7%	40/1000	
Portree High School	86.0%	10.3%	4.3%%	31/1000	17.5/1000

Pupils

Roll, Looked After and EAL pupil numbers have been taken from the Pupil Census carried out in September 2020.

School	Pupil Roll	Looked After	EAL Pupils	Free Meals Registered P4-7	Free Meals Uptake P4-7	Free Meals Uptake P1-3
Highland Primary (2020)				14.4%	74.8%	79.7%
Scotland Primary (2020)				19.9%	81.4%	75.7%
Broadford Primary School	91	<5	<5	17.4%	79.2%	79.2%
Bun-sgoil Ghàidhlig Phort Rìgh	156	<5	0	small school/number	small school/number	90.0%
Carbost Primary School	27	0	0	small school/number	small school/number	87.5%
Dunvegan Primary School	43	<5	<5	small school/number	small school/number	82.6%
Edinbane Primary School	5	0	0	small school/number	small school/number	small school/number
Elgol Primary School	6	0	0	small school/number	small school/number	small school/number
Kilmuir Primary School	25	0	0	small school/number	small school/number	55.6%
Knockbreck Primary School (Skye)	8	0	0	small school/number	small school/number	small school/number
MacDiarmid Primary School	25	0	<5	small school/number	small school/number	77.8%
Portree Primary School	158	<5	14	7.7%	57.4%	57.4%
Raasay Primary School	6	0	0	small school/number	small school/number	small school/number
Sleat Primary School	63	0	0	small school/number	small school/number	96.6%
Staffin Primary School	37	0	<5	small school/number	small school/number	93.8%
Struan Primary School	5	0	0	small school/number	small school/number	small school/number

School	Pupil Roll	Looked After	EAL Pupils	Free Meals Registration	Free Meals Uptake
Highland Secondary (2020)				11.6 %	77.6%
Scotland Secondary (2020)				15.6%	70.9%
Portree High School	490	17	16	8.0%	65.6%

Free School Meal information extracted from Healthy Living Survey collected February 2020 Free Meals Eligibility is the percentage of the present school roll registered for free meals. Free Meals Uptake is the percentage of those present on census day who were registered and took free meals. The comment "small school/number" indicates that because of the small numbers of pupils in the school or the small numbers registered for free school meals this information cannot be disclosed.

3.0 School Improvement Planning

This year due to the exceptional circumstances, Standards and Quality Reports and School Improvement Plans (SIP) have been much simplified and largely prepopulated. The School Improvement Plan is based on the single focus of recovery. This can be identified in the key themes of supporting children and young people's health and wellbeing, literacy and numeracy and in raising attainment.

4.0 Pupil Equity Funding (PEF)

The Pupil Equity Funding is allocated directly to schools and targeted at closing the poverty related attainment gap. Schools have been allocated funding for pupils in P1-S3 known to be eligible for free school meals.

This funding is to be spent at the discretion of the headteacher, working in partnership with parents, staff and the Highland Council. Schools now have their plans in place for using their funding and will be implementing those plans for the remainder of the school session. As with the School Improvement Plan (SIP), the focus is on health and wellbeing, literacy, numeracy and raising attainment.

5.0 Attainment

Elected members have requested an Attainment Toolkit for each secondary school, which is to be presented at Ward Business Meetings. A copy of the proposed toolkit will be presented to the next Education Committee for comment. A toolkit will then be prepared for each school.

Central Officers will lead the presentation at Ward Business Meetings. Headteachers will be invited to attend the relevant ward meetings to answer questions members may have and give further background information on the data.

6.0 Mental Health Services in place to support children, young people, families and staff during COVID-19

- The Educational Psychology Service works closely with the Primary Mental Health Worker Service (Tier 2 CAMHS), which is also managed by the Principal Psychologist.
- Both services have continued to provide a direct service to children, young people and families and to school staff and other professionals, albeit through virtual

means. Input has been both preventative and direct, as a result of requests for service in relation to presenting mental health issues.

- Some EPs have continued to provide support to health and wellbeing groups in some schools, providing direct support to staff and pupils through virtual means.
- The Educational Psychology Service has created a range of short training modules to support staff working in schools. Much of this is created around the need to understand behaviour, support children in distress and a particular focus on teaching in a crisis. <https://highlandcouncilpsychologicalservice.wordpress.com/covid-19-information-and-resources/>
- Some resources have been collated to be shared with families and young people to support them at this time during the COVID 19 crisis. These can be accessed from the following website. https://www.highland.gov.uk/info/886/schools_-_additional_support_needs/36/psychological_service/2
- The EP Service has worked alongside the Primary Mental Health Worker (PMHW) Team Lead to create a Health and Wellbeing page for parents, staff and pupils to access a range of resources here: <https://sites.google.com/millburnacademy.org.uk/highlanddigitalschoolshub/wellbeing-for-all/at-home>,
- This further supports the information provided by the service on the Additional Support Needs (ASN) page, alongside other digital learning resources: <https://sites.google.com/millburnacademy.org.uk/highlanddigitalschoolshub/digital-learning/asn>
- Psychological Service and the PMHW Service have shared resources that may be helpful to support children and families at this time and are copying self-help resources to schools and individual families, appropriate to the needs of their children and young people.
- Both services are also available to parents or professionals, for consultation and advice, twice weekly on the Highland 'Just Ask' Helpline https://www.highland.gov.uk/info/1361/childcare_and_family_care/434/services_for_children_and_families
- For pre-school children, the EP service has an Early Years Developmental Psychologist who has role in Early Years and a background in trauma support. He has been linking with the EYESOs and the Preschool Home Visiting team to ensure appropriate messages are provided for families at this time regarding support for their child and maintaining positive relationships. He maintains the <https://bumps2bairns.com/> website, which has a daily blog for play based family engagement and activities.
- The PMHW Team Lead and the EY Educational Psychologist are both members of the NHS Highland Infant Mental Health group, supporting the mental health of babies and infants.

7.0 Seasons for Growth

A number of primary schools across the Portree and Plockton ASGs deliver the Seasons for Growth programme. It is associated with positive change in children and young people who have experienced loss and change.

8.0 Decider Skills

A number of schools across both the Portree and Plockton ASGs promote the use Decider Life Skills with the aim of introducing coping skills and building resilience. In session 2018-19 several Head Teachers attended training. This was followed up with 75 Care and Learning staff, (teaching, non-teaching and partner agencies) attending local training across both ASGs to support the promotion of Decider Skills.

Decider skills are taught using brain-friendly learning techniques through a variety of different media - symbols, videos, music, song, actions, props and whatever else you can lay your hands on to help make the skills memorable. The skills encourage facilitators to be creative in their teaching methods.

Decider Skills were rolled out across several schools in session 2020-21 with a working group supporting delivery and beginning to review the positive impact of such strategies. Decider skills continues to be developed post lockdown to support coping skills and resilience.

Information summarised from <http://www.thedecider.org.uk>

Counselling Care: Skye and Lochalsh

9.0

The Counselling Service has been providing an invaluable provision to the children and young people of Skye and Lochalsh for over 14 years. It is available to those aged 11-18 years, whether in school or not. After a referral has been received, an introductory session is arranged to allow both the counsellor and young person to decide if counselling would be a helpful way forward. If so, an initial block of weekly sessions, usually 4 or 6, is agreed. There will be a review at the end of this initial block and, where appropriate, further sessions will be arranged. At times, the counsellor may decide that an onward referral to another service is required and this will be discussed with the young person and parent, as appropriate.

Counselling funding awarded to The Highland Council by the Scottish Government has been allocated to Associated School Groups (ASGs) based on school rolls in each ASG from P6 upwards. The Portree and Plockton ASGs are supporting the well-established local Counselling Care: Skye and Lochalsh Service.

Implications

Resource – There are no additional resource implications to The Highland Council.

Legal – None

Community (Equality, Poverty and Rural) – Improved opportunities for young people to be involved in local decision making.

Climate Change/Carbon Clever – There are no climate change/carbon clever implications.

Risk – None

Gaelic – None

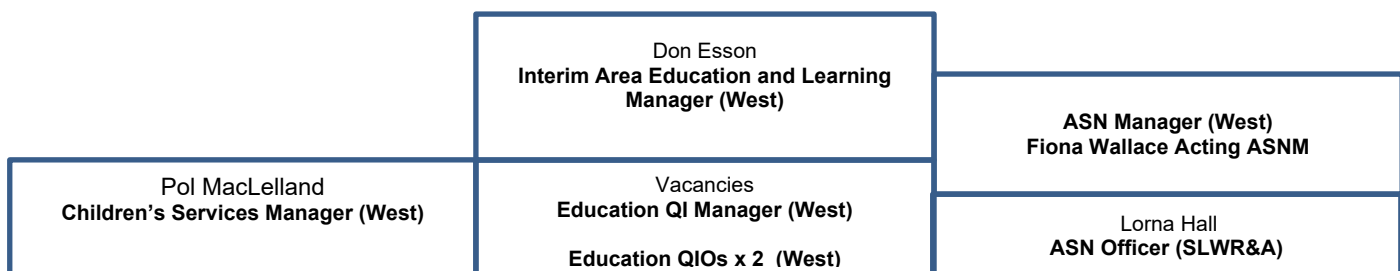
Designation: Interim Education & Learning Manager

Date: 16.11.20

Author: Don Esson

Background Papers

Skye, Lochalsh, Wester Ross & Assynt Family Team



**Practice Lead
 Care and
 Protection
 (S, L, WR & A)**
 Dianne Henderson

**Practice Lead
 Early Years
 (S, L, WR & A)**
 Elaine Rooney

**Practice Lead School Years
 (S, L, WR & A)**
 Karen Graham

SLWR&A Head Teachers

**Social
 Workers -
 Portree**
 Clare Ross
 1fte
 Julie Philp-
 Agency 1FTE
 Jemma Reid
 (DISABILITY)
 1fte
 Lydia Scott-
 Tomney
 1fte
Vacancy .06fte
Vacancy
-1 fte

**Social
 Workers -
 Gairloch**
Vacancy - 1fte

**Community
 Children's
 Worker**
 Donna
 Campbell
 -1 fte
**Support
 Workers**
Vacancy
0.6 fte - Kyle
 Tracy Boa
 0.27fte Ullapool
Vacancy
0.27fte
Gairloch
Vacancy 0.5
Portree
 Eric LeDu
 0.6fte
Vacancy 0.37
Portree

**Health
 Visitor/Practi
 e Teacher**
 Tina Barrows -
 Portree 0.5 PT
 0.5 HV

Health Visitors
 Fiona Fletcher
 1FTE
 Liz MacDonald
 0.6 - Gairloch
 Lynda
 Sanderson 0.8
 - Portree
 Louise Loudon
 1fte
 Kyle
 Karen Otter 0.6
 - Ullapool

**Community
 Early Years
 Practitioners**
 Shirley Taylor
 1fte- Portree
 Kirsten
 MacLennan 0.8
 - Ullapool
 David Taylor
 0.8 - Gairloch
 Jennifer
 MacRae
 0.6FTE - Kyle

**Children's
 Service
 Workers**
 Stacy
 Anderson
 0.4fte -
 Plockton
 Julie MacLean
 1fte Portree
Vacancy
0.6FTE -
Portree
Vacancy 0.4fte
- Plockton

**School
 Nurses**
 Laura Shirley
 0.8 - Portree
 Nicky
 MacPherson
 0.4fte- Kyle

**Community
 Staff Nurse**
 Katrina
 Finlayson 0.4
 Kyle

**Children's
 Services
 Workers**
 Yvonne Boa
 0.6 Ullapool
Vacancy 0.4 -
Gairloch

School Nurse
 Shona Goldby
 0.8fte -
 Gairloch
 Karen Otter 0.2
 - Ullapool
0.2 vacancy
Ullapool

**Community
 Staff Nurse**
Vacancy
0.4fte -
Ullapool

Ullapool High -
 Robbie
 McFedries
 Achiltibuie &
 Lochinver
 Primaries - Colin
 Masterton
 Badcaul &
 Scoraig
 Primaries- Helen
 Love
 Ullapool Primary
 - Eva Faber

Gairloch High -
 Wim Chalmet
 Bualnaluib &
 Poolewe Primaries
 - Jennifer MacIver
 (Acting)
 Gairloch - Strav
 McDonagh (Acting)
 (Acting)Kinlochewe
 & Shieldaig
 Primaries - Sarah
 Taylor

Plockton 3-18 -
 Susan Galloway
 Applecross
 & Lochcarron
 Primaries -
 Robert Gill
 Auchtertyre-
 Alison
 MacLennan
 Glenelg &
 Loch Duich
 Primaries - Kate
 McArthur
 Kyle & Kyleakin
 Primaries -
 Jennifer
 MacLean

Portree High -
 Catherine
 MacDonald
 Broadford Primary
 - Stephen Atkins
 Carbost &
 Struan Primaries -
 Mhairi MacDonald
 Elgol Primary - Iain
 Murray
 Kilmuir &
 Staffin Primaries -
 Chrisma
 MacFarlane
 Knockbreck, &
 MacDiarmid
 Primaries -Philippa
 Nicolson (Acting)
 Dunvegan &
 Edinbane Primaries
 - Vicki Parfitt
 Portree Primary -
 Sara Matheson
 Bun Sgoil Ghaidhlig
 Phort Righ
 Flora Guidi
 Raasay Primary -
 Wilma Duncan
 Sleat Primary -
 Hazel Morrison -
 Katie Wight starts
 23.11.20

Youth Justice Practitioner
 Stevie Boyle
 05 fte
Vacancy 0.5fte

**Early Years
 Education
 Support Officer**
 Jennie
 Drummond
**Early Years
 Officer**
 Marion
 MacSween
**Family
 Resource Co-
 Ordinator**
 Tracy Mcllvar

Children &
 Families Team

 Tigh na Sgìre
 Portree
 IV51 9GP
 01478 613825

Health Team

 Floor 2
 Tigh na
 Drochaid
 Bridge Road
 Portree
 IV51 9ER

Education Team

 Education &
 Learning Service
 The Fingal Centre
 Portree
 IV51 9ES
 01478 613697

SCHOOL ROLLS 2020-21

School Name	S1	S2	S3	S4	S5	S6	S1-S6
Portree High School	84	85	81	85	99	56	490

School Name	Total Roll							Total
	P1	P2	P3	P4	P5	P6	P7	
Broadford Primary	11	6	10	13	17	19	15	91
Bun-Sgoil Ghaidhlig Phort Rìgh	26	23	21	16	25	19	25	155
Bun-Sgoil Shlèite	8	10	6	10	11	12	6	63
Carbost Primary	4	4		4	4	8	3	27
Dunvegan Primary	6	11	7	8	4	3	4	43
Edinbane Primary		1		1	1	3		6
Elgol Primary				2		3	1	6
Kilmuir Primary	6	2	3	3	4	5	4	27
Knockbreck Primary (Dunvegan)		2	3			1	2	8
Macdiarmid Primary	3	1	5	2	4	4	6	25
Portree Primary	17	24	20	29	18	19	31	158
Raasay Primary	1			1	1	1	2	6
Staffin Primary	6	7	5	6	5	3	5	37
Struan Primary			1		1	2	1	5

School Name	GM Roll							Total
	P1	P2	P3	P4	P5	P6	P7	
Broadford Primary	4	4	6	7	6	8	6	41
Bun-Sgoil Ghaidhlig Phort Rìgh	26	23	21	16	25	19	25	155
Bun-Sgoil Shlèite	7	7	5	9	10	9	3	50
Carbost Primary								0
Dunvegan Primary	3	6	3	4	1	3	0	20
Edinbane Primary								0
Elgol Primary								0
Kilmuir Primary	5		3	1	4	3	1	17
Knockbreck Primary (Dunvegan)								0
Macdiarmid Primary								0
Portree Primary								0
Raasay Primary								0
Staffin Primary	1	6	4	6	5	2	2	26
Struan Primary								0

School Name	EM Roll							Total
	P1	P2	P3	P4	P5	P6	P7	
Broadford Primary	7	2	4	6	11	11	9	50
Bun-Sgoil Ghaidhlig Phort Rìgh	0	0	0	0	0	0	0	0
Bun-Sgoil Shlèite	1	3	1	1	1	3	3	13
Carbost Primary	4	4	0	4	4	8	3	27
Dunvegan Primary	3	5	4	4	3	0	4	23
Edinbane Primary	0	1	0	1	1	3	0	6
Elgol Primary	0	0	0	2	0	3	1	6
Kilmuir Primary	1	2	0	2	0	2	3	10
Knockbreck Primary (Dunvegan)	0	2	3	0	0	1	2	8
Macdiarmid Primary	3	1	5	2	4	4	6	25
Portree Primary	17	24	20	29	18	19	31	158
Raasay Primary	1	0	0	1	1	1	2	6
Staffin Primary	5	1	1	0	0	1	3	11
Struan Primary	0	0	1	0	1	2	1	5