

Cuspair Clàir-ghnothaich	6
Àir. Aithisge	G/15/21

COMHAIRLE NA GÀIDHEALTACHD

Comataidh:	Comataidh na Gàidhlig
Ceann-latha:	16 Sultain 2021
Tìotal Aithisge:	Co-chomhairle Reachdail – Moladh airson Sgìre-sgoile Foghlam tron Ghàidhlig airson Bun-Sgoil Ghlinn Urchadain
Aithisg le:	Àrd-Oifigear Gnìomhach – Coileanadh agus Riaghlachas

1. Adhbhar/Geàrr-chunntas Gnìomhach

- 1.1 Tha an aithisg seo a' toirt fios do Bhuill mu cho-chomhairle reachdail a thathar a' moladh airson 's gun tèid sgìre-sgoile Foghlam tron Ghàidhlig a stèidheachadh airson Bun-Sgoil Ghlinn Urchadain. Thèid am moladh a chur mu choinneimh Comataidh an Fhoghlaim airson co-dhùnadh foirmeil air an 17 Samhain 2021.
- 1.2 Tha an sgìre-sgoile FtG a thathar a' moladh a rèir cleachdadh a th' ann mar-thà a tha air tighinn gu buil air stèidh neo-fhoirmeil.

2. Molaidhean

- 2.1 Thathar ag iarraidh air Buill deasbad mun Mholadh a tha co-cheangailte ris an Aithisg seo. Thèid comhairle a thoirt do Chomataidh an Fhoghlaim mu bheachdan Buill Chomataidh na Gàidhlig, mus dèan i a co-dhùnadh.

3. Buaidhean

- 3.1 Goireas – Tha am Moladh ag iarraidh gun tèid cothroman air FtG a mheudachadh gu làn-ìre, ach aig a' cheart àm gum bithear mothachail air cosgaisean, gu h-àraid a thaobh còmh-dhail sgoile. Chan eilear a' sùileachadh an-dràsta gum bi cosgaisean a bharrachd ann ri linn a' mholaidh.
- 3.2 Laghail – Thèid am Moladh a chur air adhart airson co-chomhairle reachdail mar a tha air iarraidh ann an Achd Sgoiltean (Co-chomhairleachadh) (Alba) 2010. Tha e cuideachd a' cumail ris na tha riatanach a thaobh còmh-dhail sgoile mar a tha a' nochdadh ann an Achd an Fhoghlaim (Alba) 1980; ris na solaran a thaobh Foghlam tron Ghàidhlig a th' ann an Achd an Fhoghlaim (Alba) 2016; agus leis an stiùireadh reachdail a thaobh a bhith a' cruthachadh sgìrean-sgoile FtG, a chaidh a chur a-mach le Bòrd na Gàidhlig.

- 3.3 Coimhearsnachd (Co-ionannachd, Bochdainn agus Eilean) – Chan eil buaidh shònraichte sam bith air co-ionannachd, bochdainn no air gnothaichean dùthchail, seach an fheadhainn air an deach beachdachadh mar-thà a thaobh chothroman air FtG.
- 3.4 Atharrachadh Gnàth-shìde/Carbon Ciallach – Bhiodh eimiseanan gasa an taigh-ghlainne a bharrachd aig ìre cho fìor bheag is gum biodh sin gun fhiù.
- 3.5 Cunnart – Cha deach cunnartan sam bith ainmeachadh.
- 3.6 Gàidhlig – Nan deigheadh am Moladh a thoirt gu buil, bheireadh e soillearachd a bharrachd a thaobh còirichean còmhhdhalach na cloinne a bhiodh a’ faighinn Foghlam tron Ghàidhlig ann am Bun-Sgoil Ghlinn Urchadain, agus bhiodh na cothroman a bhiodh aig a’ chloinn air an t-solar air am meudachadh, taobh a-staigh na tha reusanta.

4. Foir-shealladh

- 4.1 Tha 171 bun-sgoil fosgailte an-dràsta ann an sgìre Chomhairle na Gàidhealtachd, 20 dhiubh anns a bheil Foghlam tron Ghàidhlig (FtG) air a thabhann.
- 4.2 Chan eil na h-ullachaidhean a th’ ann an-dràsta a thaobh chothroman air FtG do sgoilearan air an deagh mhìneachadh, agus tha iad air tighinn gu buil rè ùine. Tha mu leth de na sgoiltean gun sgìrean-sgoile sònraichte airson FtG, agus tron phoileasaidh a th’ ann an-dràsta, tha còmhhdail air a tabhann sna cùisean seo ‘taobh a-staigh astar siubhail reusanta’. Gu math tric, tha seo ga mhìneachadh mar gu bheil e a’ ciallachadh suas ri 15 mìle, ach tha eadar-dhealachaidhean ann, agus uaireannan tha an t-astar a thathar a’ siubhal nas fhaide na seo.
- 4.3 Tha Bòrd na Gàidhlig air Stiùireadh Reachdail a chur a-mach a thaobh Foghlam Gàidhlig. Tha an Stiùireadh a’ gabhail a-steach moladh gum bu chòir do dh’ùghdarrasan ionadail sgìrean-sgoile a stèidheachadh airson sgoiltean a tha a’ tabhann FtG, agus sa bhitheantas, gum biodh na sgìrean-sgoile seo a’ tàr-chòmhdachadh grunn sgìrean-sgoile Foghlam Beurla. Bu chòir do sgìrean-sgoile airson FtG a bhith ann an sgìre far a bheil an t-ùghdarras ionadail dhen bheachd gum biodh e reusanta do sgoilearan a tha ag iarraidh FtG siubhal dhan sgoil, agus bu chòir dhaibh cothrom a thoirt do phàrantan FtG a thaghadh airson an cuid chloinne.
- 4.4 Ann a bhith a’ stèidheachadh sgìrean-sgoile FtG, feumaidh co-chomhairle reachdail gabhail àite, a rèir Achd Sgoiltean (Co-chomhairleachadh) (Alba) 2010. Tha na gnìomhan seo cosgail a thaobh ghoireasan, chan ann a-mhàin do Chomhairle na Gàidhealtachd, ach cuideachd do dh’Fhoghlam Alba, a dh’fheumas Neach-sgrùdaidh a shuidheachadh gus gach moladh fa leth a mheasadh. Tha a’ Chomhairle air a bhith a’ cur air adhart cho-chomhairlean reachdail airson sgìrean-sgoile FtG a stèidheachadh anns na h-àiteachan air a’ Ghàidhealtachd a tha a’ tabhann FtG. Tha e riatanach ùine a ghabhail ann a bhith a’ cur seo an sàs, seach gu bheil na h-uimhir de FtG air a thabhann, agus gu bheil co-chomhairlean eile rin cur air adhart cuideachd. Chaidh stad a chur air prògram nan co-chomhairlean sa Mhàrt 2020 air sàillibh gun deach casg a chur air gnothachas àbhaisteach ri linn ionnsaigh galar Covid-19. Aig ceann-latha na h-aithisge seo, de na 20 bun-sgoiltean a tha a’ tabhann FtG, chaidh 11 sgìrean-sgoile FtG a chruthachadh. Thèid molaidhean eile a chur mu choinneimh Chomataidhean eile san àm ri teachd, a bhios a’ còmhdach sgìrean eile dhen Ghàidhealtachd.

- 4.5 'S e Bun-Sgoil Ghlinn Urchadain an aon bhun-sgoil ann am Buidheann Sgoiltean Co-Cheangailte Ghlinn Urchadain a tha a' tabhann FtG. Airson seisean 2021-22, thathar an dùil gum bi 14 sgoilearan a' frithealadh FtG anns an sgoil eadar P1-7, dithis dhiubh bho thaobh a-muigh sgìre-sgoile Bhun-Sgoil Ghlinn Urchadain fhèin.
- 4.6 Tha am Pàipear Molaidh (**Eàrr-ràdh A**), a' mìneachadh sgìre-sgoile FtG a thathar a' moladh airson Bun-Sgoil Ghlinn Urchadain. Nan deigheadh a chur an gnìomh, bheireadh am moladh còirichean FtG do sgoilearan taobh a-staigh sgìrean-sgoile Buidheann Sgoiltean Co-cheangailte Ghlinn Urchadain. Tha mapa de na sgìrean-sgoile ann an **Eàrr-ràdh B**.

5. Ath Cheumannan

- 5.1 A rèir cho-dhùnidhean Comataidh an Fhoghlaim a thaobh gluasad gu co-chomhairle reachdail, thèid coinneamh phoblach a chumail airson molaidhean na Comhairle a dheasbad, agus bidh iomadh cothrom ann do luchd-ùidhe beachdan a chur a-steach chun na Comhairle mus tèid co-dhùnadh sam bith a dhèanamh. Aig an ìre seo, a thaobh na h-ùine a bheireadh co-chomhairle reachdail, thathar a' sùileachadh gun deigheadh moladh deireannach a sgrùdadh leis a' Chomataidh as t-fhoghar 2022, ged a dh'fhaodadh seo atharrachadh airson dèanamh cinnteach gum bi ùine gu leòr aig a' Chomhairle beachdachadh air is freagairt a thoirt do ghnothaichean a dh'fhaodadh tighinn am bàrr tron cho-chomhairle.

Ainmeachadh: Àrd-Oifigear Gnìomhach – Coileanadh agus Riaghlachas

Ceann-latha: 06 Sultain 2021

Ùghdar: Ian Jackson, Oifigear Foghlaim

Eàrr-ràdhan: Eàrr-ràdh A: Pàipear Molaidh
Eàrr-ràdh B: Mapa de sgìrean-sgoile FtG a Thathar a' Moladh

THE HIGHLAND COUNCIL

EDUCATION COMMITTEE

The proposal is to establish a Gaelic Medium catchment area for Glenurquhart Primary School

EDUCATIONAL BENEFITS STATEMENT

THIS IS A PROPOSAL PAPER PREPARED IN TERMS OF THE EDUCATION AUTHORITY'S AGREED PROCEDURE TO MEET THE REQUIREMENTS OF THE SCHOOLS (CONSULTATION) (SCOTLAND) ACT 2010

INTRODUCTION

The Highland Council is proposing, subject to the outcome of the statutory consultation process:

- To establish a Gàidhlig Medium (GM) catchment area for Glenurquhart Primary School. The new catchment will overlay the current English Medium (EM) catchments of Glenurquhart Primary School, Balnain Primary School, and Cannich Bridge Primary School.
- To formalise the current arrangements relating to Gàidhlig Medium Education (GME) in Glenurquhart High School, under which the catchment area for Glenurquhart High School will apply to both Gàidhlig Medium and English Medium education.

Existing primary school catchments for the provision of English Medium education will be unaffected.

The proposed changes, if approved, will be implemented at the conclusion of the statutory consultation process.

If implemented as drafted, the proposed GM catchment for Glenurquhart Primary School will include all 3 of the primary school catchments within the Glenurquhart Associated School Group (ASG).

Any identified parental demand for local provision of GME from within the Balnain and Cannich Bridge catchments would be assessed in accordance with the Education (Scotland) Act 2016.

SUMMARY OF THE CONSULTATION PROCESS

PUBLICATION INFORMATION

Proposal Paper Published

The proposal paper will be available for inspection, free of charge, at:

- Glenurquhart Primary School
- Balnain Primary School
- Cannich Bridge Primary School
- Glenurquhart Public Library, Drumnadrochit

and published on the Highland Council website:

www.highland.gov.uk/schoolconsultations

Copies of this Proposal Paper are also available on request from:

Business Support Team
Care and Learning
Highland Council
Headquarters Building
Inverness
IV3 5NX
E-mail: Education.Consultations@highland.gov.uk

To request this information in an alternative format, e.g. large print, Braille, audio formats, or suitable language, please also contact the Business Support Team, Care and Learning, Highland Council Headquarters Building, Inverness IV3 5NX

E-mail: Education.Consultations@highland.gov.uk

Formal notice of the Proposal and relevant information will be given and be made available, free of charge, to the consultees listed as follows:

- (i) Parents of pupils attending Glenurquhart Primary School; including parents of pre-school pupils;
- (ii) Parents of pupils attending Balnain Primary School; including parents of pre-school pupils;
- (iii) Parents of pupils attending Cannich Bridge Primary School; including parents of pre-school pupils;
- (iv) Parents of pupils attending Glenurquhart High School;
- (v) The Parent Councils of each of the above schools;
- (vi) All staff of the schools listed above.
- (vii) Members of Parliament and Members of the Scottish Parliament for the area affected by the proposal;
- (viii) Trade union representatives;
- (ix) All Community Councils for the areas covered by the Proposal;

- (x) Bòrd na Gàidhlig;
- (xi) Education Scotland.

Advertisement in Local Media

A notice announcing the public meeting will be placed in the *Inverness Courier* and on the Highland Council's Facebook page.

Consultation Period

The consultation for this Proposal will run from 24 November 2021 and will end on 21 January 2022. This period allows for the statutory minimum of six weeks, including at least thirty school days.

Public Meeting

A public meeting will be held, the details of which are set out below:

8 December 2021 at 6.30pm at Glenurquhart High School (venue subject to possible change due to COVID conditions).

Anyone wishing to attend the public meeting is invited to do so. The meeting will be convened by the Council, will be chaired by a senior elected councillor, and will be addressed by officers of the Education Service.

The meeting will be an opportunity for the public to hear more about the proposal; to ask questions about the proposal; and to have the views of all stakeholders recorded so that they can be taken into account. A note will be taken at the meeting of questions asked and views expressed. This note will be published on the Council website. The meeting will also be recorded.

The note will be forwarded to Education Scotland, along with other submissions and comments received by the Council during the consultation process.

Responses to the Proposals

Interested parties are invited to respond to the Proposals by making written or electronic submissions on the Proposals to:

Ian Jackson
Education Officer (Resources)
Camaghael Hostel
Fort William
PH33 7NE
Email: Education.Consultations@highland.gov.uk

Or via an online form, a link to which can be found on

www.highland.gov.uk/schoolconsultations

When responding, you are invited to state your relationship with the school – for example, “pupil”, “parent”, “carer”, “relative”, “former pupil”, “teacher in school”, “member of the community” etc. However it is not compulsory to do so.

Those sending in a response, whether by letter or electronically should know that their response will be open to public scrutiny and may have to be supplied to anyone making a reasonable request to see it. If they do not wish their response to be made publicly available, they should clearly write on the document: “I wish my response to be considered as confidential with access restricted to Councillors and Council Officers of Highland Council”. Otherwise, it will be assumed that the person making the response agrees to it being made publicly available. All written responses must be received by the last day of the consultation period, 21 January 2022 at 5.00pm.

Involvement of Education Scotland

When the Proposal Document is published, a copy will also be sent to Education Scotland by the Council. Education Scotland will also be sent, by 28 February 2022, a copy of any relevant written representations that are received by the Council from any person during the consultation period. Education Scotland will also receive the summary note of the public meeting that and so far as is practicable a copy of any other relevant documentation. Education Scotland will then prepare a report on the educational aspects of the proposal not later than 18 March 2022. In preparing their report, Education Scotland may visit the affected schools and make such enquiries of people there as they consider appropriate.

Review of Consultation Exercise

Highland Council will review the proposal having regard to the Education Scotland Report, written representations that it has received, and oral representations made at the public meeting. It will then prepare a Consultation Report. This Report will be published in electronic and printed formats and will be sent to anyone who submitted a written representation during consultation. It will be available on the Council website as well as at the affected school and local library, free of charge. The Report will include a summary of the written and oral representations made during consultation and a copy of the Education Scotland Report, together with the Council’s considered response to the issues raised. The Report will include details of any alleged inaccuracies and/or omissions and how these have been handled. The Consultation Report will be published at least 3 weeks prior to being submitted to the Council’s Education Committee, who will make a recommendation to the full Highland Council.

In publishing the report the Council will invite any person or party to make further representations to the Committee prior to its meeting. A notice to this effect will also be published on the Highland Council website.

The Council intends to publish its Report in August 2022, prior to submission to the Council’s Education Committee on in September 2022. However, this timescale may change depending on the nature of issues raised during consultation, and the need to give full consideration to those issues. In the latter event, the Report may not be submitted until a later Committee meeting.

Any proposal approved by the Education Committee would require to be confirmed by a subsequent meeting of the full Highland Council.

Note on Corrections

If any inaccuracy or omission is discovered in this Proposal paper, either by the Council or any other person, the Council will determine if relevant information has been omitted or, if the paper contains an inaccuracy. The Council will then take appropriate action, which may include the issue of a correction or the reissuing of the Proposal or the revision of the timescale for the consultation period, if appropriate. In that event, relevant consultees and HMI will be advised.

PROPOSAL

Legislative Background

- 1.1 The proposal is advanced within the context of all applicable legislation. Amongst other duties, education authorities are required to secure adequate and efficient provision of school education (S.1 of the Education Act 1980); to publish or otherwise make available information as to their arrangements for the placing of children in schools under their management (S.28 of the 1980 Act) and to promote and support Gaelic Medium education and learning (S.15 of The Education (Scotland) Act 2016. Statutory Guidance issued by Bòrd na Gàidhlig early in 2017 specifies that local authorities should establish catchment areas for Gàidhlig Medium education. The Guidance goes on to say that a catchment area for GME provision should be an area in which the education authority thinks it is reasonable for pupils wishing to receive GME provision to travel to school, and should have the potential to attract parents to choose GME provision for their children. Catchment areas for GME provision will normally overlay a number of school catchment areas.
- 1.2 In common with all public bodies in Scotland, the Highland Council also has a duty to provide Best Value. This includes making arrangements to secure continuous improvement in performance whilst maintaining an appropriate balance between quality and cost; and, in making those arrangements and securing that balance, to have regard to economy, efficiency, effectiveness, equal opportunities requirements and to contribute to the achievement of sustainable development.

Reason for the Proposal

- 2.1 This proposal is being advanced for the following reasons:
 - Highland Council has not previously specified catchment area for many of its schools offering GME. This has led to a lack of clarity for parents in respect of entitlement to GME, (see paragraph 2.2 below).
 - Bòrd na Gàidhlig has issued statutory guidance recommending that local authorities create catchment areas for GME.
- 2.2 The current criteria for providing transport to GME in Highland are not particularly well defined, and have evolved over time. The minimum distance and road safety criteria are the same as for English Medium education. The Council currently has an informal arrangement under which transport to GME can be provided “within reasonable travelling distance”. This has been generally interpreted as meaning up to 15 miles, but there are numerous variations.

Informal Consultation

- 3.1 Informal discussions have been held with local elected councillors of Highland Council and with the Head Teachers of (i) Glenurquhart, Balnain and Cannich Bridge Primary Schools, and (ii) Glenurquhart High School. The Parent Councils all of the local primary schools, and all of the local Community Councils, were also notified.

Current and Planned Provision of Gàidhlig Medium Education within the Glenurquhart ASG

- 4.1 There are 3 primary schools within the ASG. Glenurquhart Primary is the only one to offer GME at the primary stage.

Glenurquhart Primary School

- 5.1 Glenurquhart Primary is situated within the village of Drumnadrochit. The catchment extending southwards to Balbeg, westwards to Polmailly Wood, and northwards to just below the Clansman Hostel. At the time of writing there are expected to be 127 pupils in P1-7 during session 2021-22. Of these 14 are expected to be within GME. The school has excellent accommodation with well-sized classrooms, a large hall/theatre with bleacher seating, a dining room, medical room and designated nursery facility.
- 5.2 Of the 14 GM pupils, all but two are from within the Glenurquhart Primary catchment itself.

Proposed School Catchments for GME

- 6.1 There are 2 other primary schools within the Glenurquhart ASG. Approximate travel distances and times to Glenurquhart Primary from the other schools are set out below:

Balnain Primary – Glenurquhart Primary – 5.2 miles, 11 minutes travel time.

Cannich Bridge Primary – Glenurquhart Primary – 13 miles, 22 minutes travel time.

- 6.2 It should be noted though, that Cannich Bridge Primary has a wide catchment area, and travel from the furthest ends of that catchment will be considerably longer than the distances and times given above.
- 6.3 The statutory guidance specifies that a catchment area for GME provision should be an area in which the education authority thinks it is reasonable for pupils wishing to receive GME provision to travel to school, and should have the potential to attract parents to choose GME provision for their children.
- 6.4 The Council is sympathetic to the idea that Gàidhlig Medium Education should be accessible as many pupils Highland as possible, provided it is practical and reasonable to provide access.

- 6.5 Both Balnain and Cannich Bridge schools are within the informal 15-mile limit that has previously been applied in respect of transport to GME, and it is therefore proposed that both school catchments should be included within the proposed GM catchment.
- 6.6 The map at **Appendix B** shows the proposed GM catchment.
- 6.9 No changes are proposed for these catchments in respect of English Medium education.
- 6.10 For the purposes of GME, the Glenurquhart High School catchment will be the same as the school's existing catchment.

Educational Benefits

- 7.1 The Proposal forms part of Highland Council's overall approach to the promotion of Gàidhlig medium education. Up to now, Highland Council's admission arrangements to GME have been informal and based on a "reasonable distance" (often applied as a 15-mile radius) from each school offering GME. In some locations these radii have overlapped, and the "15 mile" principle has not always been applied consistently. The creation of GM catchment areas, extended throughout Highland, will mean that admissions to GME will in future be more formal and robust.
- 7.2 The Proposal therefore helps to consolidate our existing provision of GME, and allows for the more efficient use of resources. It should be considered alongside other measures being undertaken to promote Gaelic and the benefits of bilingualism.
- 7.3 It is acknowledged that bilingualism has educational benefits as it provides the user with a better sense of the structure of language, and bilingual children often find it easier to pick up other languages. The continued availability of Gaelic medium education at Glenurquhart Primary School, as evidenced by the new catchment, will provide children with the opportunity to develop these skills for life.
- 7.4 The creation of a GM catchment area will demonstrate the Council's commitment to the long-term future of Gaelic Medium education. Evidence of this commitment may help with the known problem with "drop-out" from GME.

Effects on School Transport

- 8.1 The children attending GME at Glenurquhart PS from within the Glenurquhart PS catchment, who require school transport, utilise the same transport arrangements as those attending English Medium education. A parental transport contract exists for the one other pupil currently accessing GME. The Proposal is not expected to have any effects on these current transport arrangements.

Effects on Staff and School Management Arrangements

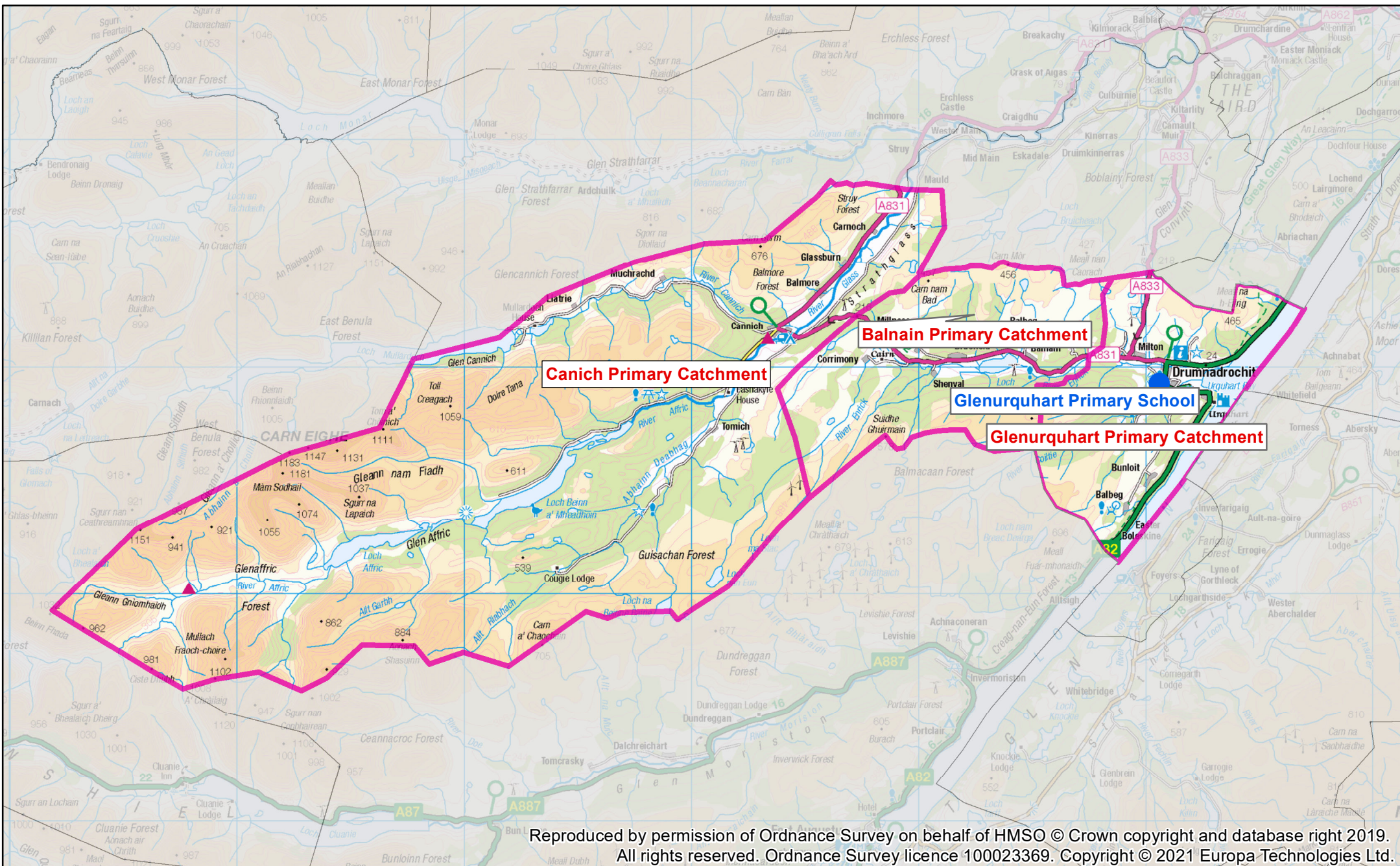
- 9.1 The Council does not expect any significant impact on local school rolls. Nor do we expect there to be any direct impact on staff within the schools of the Glenurquhart ASG.

Effect on the Local Communities

- 10.1 The proposal is not expected to have any impact on the wider local community.

Recommendation

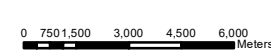
- 11.1 Highland Council recommends the adoption of a Gàidhlig Medium catchment area for Glenurquhart Primary School, along the lines set out in this paper.
- 11.2 This consultation paper is issued in terms of the authority's procedures to meet the relevant statutory requirements. Following the consultation period, a report and submissions received will be presented to the Education Committee of the Highland Council.



Proposed Gaelic medium catchment

Glenurquhart ASG

Ref: gis2423
 Date: 09/08/2021



1:216,068

