

Agenda Item	6
Report No	LA/10/23

HIGHLAND COUNCIL

Committee: Lochaber

Date: 16 May 2023

Report Title: Highland Quiet Routes – Pilot Project Report

Report By: Executive Chief Officer Infrastructure & Environment

1 Purpose/Executive Summary

- 1.1 This report presents the Highland Quiet Routes Report to Committee for the 'Glencoe Quiet Route.'

2 Recommendations

- 2.1 Members are asked to:
- i. **Note** the contents of this report; and
 - ii. **Approve** the 'Glencoe Quiet Route' including Temporary Traffic Regulation Order reducing the Speed Limit on the route to 40mph for 18 months.

3. Implications

- 3.1 **Resource** - The budget for the Quiet Routes Pilot Project including consultation, implementation, roads furniture/signage and project monitoring is provided in full by Transport Scotland. The project is being managed by HITRANS and supported by Highland Council.
- 3.2 **Legal** - Temporary Traffic Regulation Order required to reduce the national speed limit of the route to 40mph.
- 3.3 **Community (Equality, Poverty and Rural)** - Quiet routes aims to provide wider access to active travel and the outdoors to benefit communities along the route.
- 3.4 **Climate Change / Carbon Clever** - Traffic monitoring/data collection on the route will identify travel trends to determine if there is a shift towards active travel modes and if vehicle numbers and speed is reduced to the benefit of the environment.

3.5 **Risk:** No implications.

3.6 **Gaelic:** No implications.

4 Background

4.1 Highland Quiet Routes is a pilot project to encourage safe walking, cycling and horseback activities on designated rural roads where traffic and vehicle speeds are low. Additionally, it aims to preserve the natural beauty of rural areas, whilst supporting access to the outdoors for everyone, which is shown to support local economic development through increased tourism.

5 Proposed Quiet Route

5.1 The 'Glencoe Quiet Route' comprises a single-track road from the River Coe Bridge South-East to the outskirts of Glencoe Village to link with the A82; passing Red Squirrel Campsite and Clachaig Inn and will facilitate an active travel link between Glencoe and accommodation along the route. The aim is to provide a safe low-traffic route that encourages more people to consider active travel for everyday journeys.

5.2 The route has been assessed and speed data has confirmed that although the route is currently subject to the national speed limit that 85th percentile speeds recorded are low between 39.7mph and 42.4mph, see **Appendix 1**. Therefore, it is proposed that the route will be subject of a Temporary Traffic Regulation Order to reduce the speed limit to 40mph for the duration of the pilot project that will operate for 18 months from 1 July 2023.

5.3 Gateway signage, gateway repeater signs, 40mph roundels, road markings, warning signs and surface treatments are to be implemented within the scope of the project to raise awareness of active travel and benefit road safety, see **Appendix 2**.

6 Consultation and Community Engagement

6.1 An online engagement portal was setup to promote the Glencoe Quiet Route and obtain local feedback through an Active Travel Behaviour Survey. There was also engagement with the Glencoe and Glen Etive Community Council, Glencoe Primary School and a 'face to face' public engagement session on 24 October 2022 at St Mary's Church Hall in Glencoe, see Appendix 3.

7 Monitoring and Review

7.1 Quiet Routes operate successfully in other Local Authority Areas and monitoring activity is proposed during the pilot project to quantify if there is uptake in active travel and a reduction in vehicle use and traffic speeds. Monitoring is proposed during the first 3 months of the project going live, between July and September 2023 and traffic data will be collected in September/October 2023. This will replicate where possible consultation, community engagement and traffic data collected prior to the pilot project to allow changes in travel behaviour to be measured and an assessment of the road's suitability as a permanent Quiet Route to be undertaken.

7.2 A further report will be submitted to this committee within 18 months where a permanent Quiet Route or permanent Traffic Regulation Order is proposed.

Designation: Executive Chief Officer Infrastructure & Environment

Date: 26 April 2023

Author: Allan Bryce, Project Officer Active Travel

Glencoe Quiet Route – Traffic and Speed Data

Traffic surveys were undertaken at 2 Automatic Traffic Counter (ATC) sites to determine the traffic volumes and 85th percentile speeds over a 7-day period, see Figure 1. In addition, a traffic camera was used to identify non-motorised traffic modes and volumes over a 7-day period. It should be noted that there is currently a national speed limit (60mph) in place along the full length of the route. The traffic survey was conducted between 26/09/22 and 02/10/22 which is outwith the tourist season for this location. There were no events that would cause any suspected inconsistencies in the traffic data.



Figure 1 – Route extent and Counter/Camera locations

The traffic survey results for the proposed route show very low non-motor usage count Eastbound (EB) and Westbound (WB) at both traffic monitoring locations ATC 1 and ATC 2, see Figure 2.

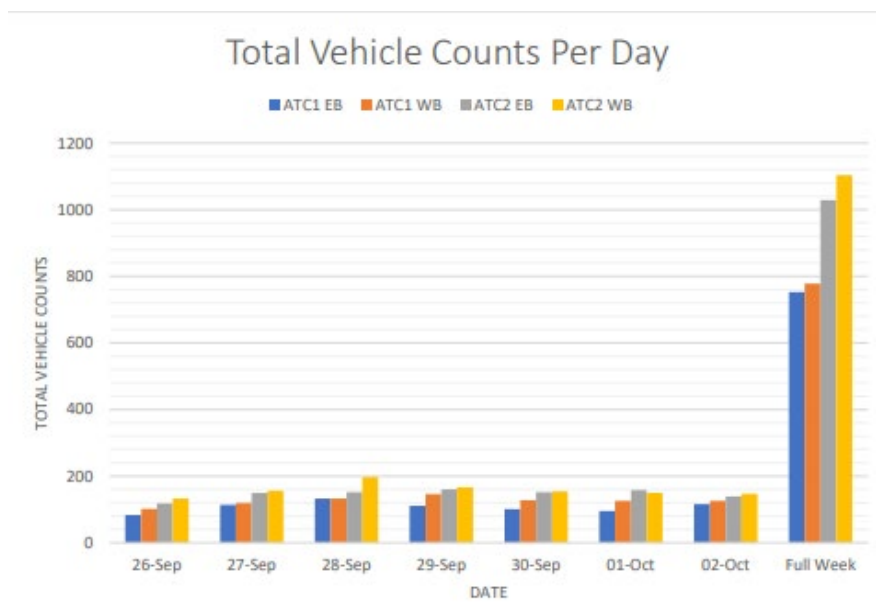


Figure 2 – Daily vehicle counts

Low 85th percentile speeds Eastbound (EB) and Westbound (WB) were recorded at both traffic monitoring locations ATC 1 and ATC 2, as identified in Figure 3.

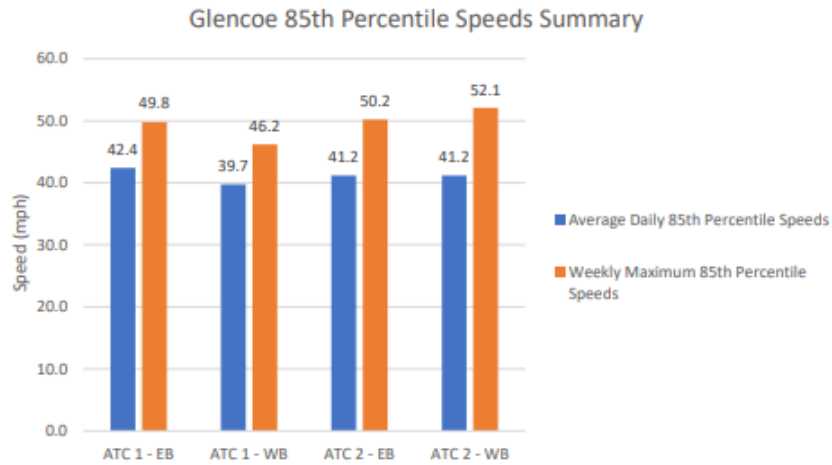


Figure 3 – 85th percentile speeds average daily / weekly

Data from the non-motorised user counts gathered from the camera location is given in Figures 4 and 5.

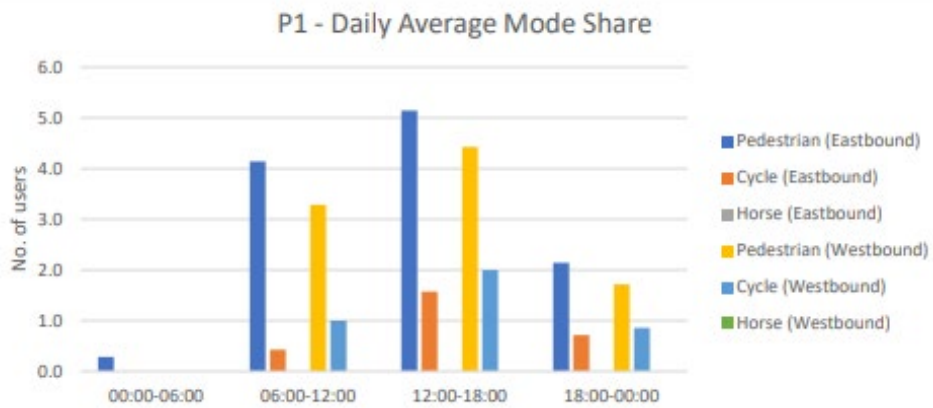


Figure 4 – Daily Average by mode

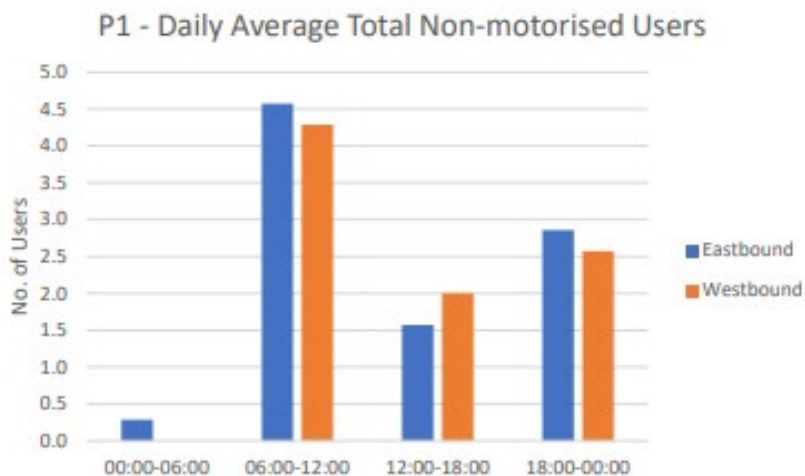


Figure 5 – Non-motorised users

Glencoe Quiet Route – Route Design

The proposed Glencoe Quiet Route is between the River Coe Bridge, travelling South-East to link with the A82, see Figure 1.

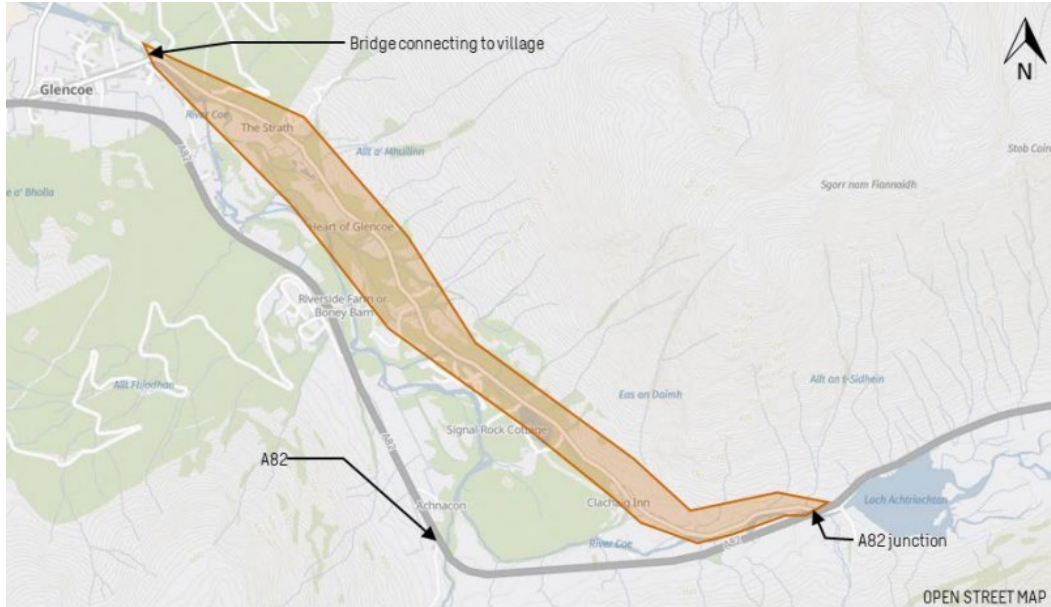


Figure 1 – Route extents

The full range of signs and road markings to be implemented across the route is shown at Figure 2.

<table border="1"> <tr><td>Signing Project</td><td>QUIET ROUTES – GLENCOE</td></tr> <tr><td>Sign Reference</td><td>S562</td></tr> <tr><td>Width (mm)</td><td>850</td></tr> <tr><td>Height (mm)</td><td>750</td></tr> <tr><td>Material</td><td>Class RA2</td></tr> <tr><td>Background</td><td>White</td></tr> <tr><td>Border</td><td>Red</td></tr> <tr><td>Legend</td><td>Black</td></tr> </table>	Signing Project	QUIET ROUTES – GLENCOE	Sign Reference	S562	Width (mm)	850	Height (mm)	750	Material	Class RA2	Background	White	Border	Red	Legend	Black	<table border="1"> <tr><td>Signing Project</td><td>HTRWAS</td></tr> <tr><td>Sign Reference</td><td>G-470-40-T</td></tr> <tr><td>Width (mm)</td><td>600</td></tr> <tr><td>Height (mm)</td><td>600</td></tr> <tr><td>Material</td><td>Class RA2</td></tr> <tr><td>Background</td><td>White</td></tr> <tr><td>Border</td><td>Red</td></tr> <tr><td>Legend</td><td>Black</td></tr> </table>	Signing Project	HTRWAS	Sign Reference	G-470-40-T	Width (mm)	600	Height (mm)	600	Material	Class RA2	Background	White	Border	Red	Legend	Black
Signing Project	QUIET ROUTES – GLENCOE																																
Sign Reference	S562																																
Width (mm)	850																																
Height (mm)	750																																
Material	Class RA2																																
Background	White																																
Border	Red																																
Legend	Black																																
Signing Project	HTRWAS																																
Sign Reference	G-470-40-T																																
Width (mm)	600																																
Height (mm)	600																																
Material	Class RA2																																
Background	White																																
Border	Red																																
Legend	Black																																
<table border="1"> <tr><td>Signing Project</td><td>QUIET ROUTES – GLENCOE</td></tr> <tr><td>Sign Reference</td><td>G1</td></tr> <tr><td>Width (mm)</td><td>680</td></tr> <tr><td>Height (mm)</td><td>430</td></tr> <tr><td>Material</td><td>Class RA2</td></tr> <tr><td>Background</td><td>White</td></tr> <tr><td>Border</td><td>Black</td></tr> <tr><td>Legend</td><td>Black</td></tr> </table>	Signing Project	QUIET ROUTES – GLENCOE	Sign Reference	G1	Width (mm)	680	Height (mm)	430	Material	Class RA2	Background	White	Border	Black	Legend	Black	<table border="1"> <tr><td>Signing Project</td><td>HTRWAS</td></tr> <tr><td>Sign Reference</td><td>G-470-30-T</td></tr> <tr><td>Width (mm)</td><td>600</td></tr> <tr><td>Height (mm)</td><td>600</td></tr> <tr><td>Material</td><td>Class RA2</td></tr> <tr><td>Background</td><td>White</td></tr> <tr><td>Border</td><td>Red</td></tr> <tr><td>Legend</td><td>Black</td></tr> </table>	Signing Project	HTRWAS	Sign Reference	G-470-30-T	Width (mm)	600	Height (mm)	600	Material	Class RA2	Background	White	Border	Red	Legend	Black
Signing Project	QUIET ROUTES – GLENCOE																																
Sign Reference	G1																																
Width (mm)	680																																
Height (mm)	430																																
Material	Class RA2																																
Background	White																																
Border	Black																																
Legend	Black																																
Signing Project	HTRWAS																																
Sign Reference	G-470-30-T																																
Width (mm)	600																																
Height (mm)	600																																
Material	Class RA2																																
Background	White																																
Border	Red																																
Legend	Black																																
<table border="1"> <tr><td>Signing Project</td><td>QUIET ROUTES – GLENCOE</td></tr> <tr><td>Sign Reference</td><td>S562</td></tr> <tr><td>Width (mm)</td><td>850</td></tr> <tr><td>Height (mm)</td><td>750</td></tr> <tr><td>Material</td><td>Class RA2</td></tr> <tr><td>Background</td><td>White</td></tr> <tr><td>Border</td><td>Red</td></tr> <tr><td>Legend</td><td>Black</td></tr> </table>	Signing Project	QUIET ROUTES – GLENCOE	Sign Reference	S562	Width (mm)	850	Height (mm)	750	Material	Class RA2	Background	White	Border	Red	Legend	Black	<table border="1"> <tr><td>Signing Project</td><td>HTRWAS</td></tr> <tr><td>Sign Reference</td><td>G-470-40-R</td></tr> <tr><td>Width (mm)</td><td>1500</td></tr> <tr><td>Height (mm)</td><td>300</td></tr> <tr><td>Material</td><td>Class RA2</td></tr> <tr><td>Background</td><td>White</td></tr> <tr><td>Border</td><td>Red</td></tr> <tr><td>Legend</td><td>Black</td></tr> </table>	Signing Project	HTRWAS	Sign Reference	G-470-40-R	Width (mm)	1500	Height (mm)	300	Material	Class RA2	Background	White	Border	Red	Legend	Black
Signing Project	QUIET ROUTES – GLENCOE																																
Sign Reference	S562																																
Width (mm)	850																																
Height (mm)	750																																
Material	Class RA2																																
Background	White																																
Border	Red																																
Legend	Black																																
Signing Project	HTRWAS																																
Sign Reference	G-470-40-R																																
Width (mm)	1500																																
Height (mm)	300																																
Material	Class RA2																																
Background	White																																
Border	Red																																
Legend	Black																																
<table border="1"> <tr><td>Signing Project</td><td>QUIET ROUTES – GLENCOE</td></tr> <tr><td>Sign Reference</td><td>G2</td></tr> <tr><td>Width (mm)</td><td>995</td></tr> <tr><td>Height (mm)</td><td>750</td></tr> <tr><td>Material</td><td>Class RA2</td></tr> <tr><td>Background</td><td>White</td></tr> <tr><td>Border</td><td>Black</td></tr> <tr><td>Legend</td><td>Black</td></tr> </table>	Signing Project	QUIET ROUTES – GLENCOE	Sign Reference	G2	Width (mm)	995	Height (mm)	750	Material	Class RA2	Background	White	Border	Black	Legend	Black	<table border="1"> <tr><td>Signing Project</td><td>HTRWAS</td></tr> <tr><td>Sign Reference</td><td>G-470-30-R</td></tr> <tr><td>Width (mm)</td><td>300</td></tr> <tr><td>Height (mm)</td><td>300</td></tr> <tr><td>Material</td><td>Class RA2</td></tr> <tr><td>Background</td><td>White</td></tr> <tr><td>Border</td><td>Red</td></tr> <tr><td>Legend</td><td>Black</td></tr> </table>	Signing Project	HTRWAS	Sign Reference	G-470-30-R	Width (mm)	300	Height (mm)	300	Material	Class RA2	Background	White	Border	Red	Legend	Black
Signing Project	QUIET ROUTES – GLENCOE																																
Sign Reference	G2																																
Width (mm)	995																																
Height (mm)	750																																
Material	Class RA2																																
Background	White																																
Border	Black																																
Legend	Black																																
Signing Project	HTRWAS																																
Sign Reference	G-470-30-R																																
Width (mm)	300																																
Height (mm)	300																																
Material	Class RA2																																
Background	White																																
Border	Red																																
Legend	Black																																
<table border="1"> <tr><td>Signing Project</td><td>QUIET ROUTES – GLENCOE</td></tr> <tr><td>Sign Reference</td><td>G5136</td></tr> <tr><td>Width (mm)</td><td>850</td></tr> <tr><td>Height (mm)</td><td>750</td></tr> <tr><td>Material</td><td>Class RA2</td></tr> <tr><td>Background</td><td>White</td></tr> <tr><td>Border</td><td>Red</td></tr> <tr><td>Legend</td><td>Black</td></tr> </table>	Signing Project	QUIET ROUTES – GLENCOE	Sign Reference	G5136	Width (mm)	850	Height (mm)	750	Material	Class RA2	Background	White	Border	Red	Legend	Black	<table border="1"> <tr><td>Signing Project</td><td>Glencoe Quiet Route – A82 Gateway</td></tr> <tr><td>Sign Reference</td><td>G1-SS</td></tr> <tr><td>Width (mm)</td><td>385</td></tr> <tr><td>Height (mm)</td><td>340</td></tr> <tr><td>Material</td><td>Class RA2</td></tr> <tr><td>Background</td><td>Blue</td></tr> <tr><td>Border</td><td>White</td></tr> <tr><td>Legend</td><td>White</td></tr> </table>	Signing Project	Glencoe Quiet Route – A82 Gateway	Sign Reference	G1-SS	Width (mm)	385	Height (mm)	340	Material	Class RA2	Background	Blue	Border	White	Legend	White
Signing Project	QUIET ROUTES – GLENCOE																																
Sign Reference	G5136																																
Width (mm)	850																																
Height (mm)	750																																
Material	Class RA2																																
Background	White																																
Border	Red																																
Legend	Black																																
Signing Project	Glencoe Quiet Route – A82 Gateway																																
Sign Reference	G1-SS																																
Width (mm)	385																																
Height (mm)	340																																
Material	Class RA2																																
Background	Blue																																
Border	White																																
Legend	White																																
<table border="1"> <tr><td>Signing Project</td><td>QUIET ROUTES – GLENCOE</td></tr> <tr><td>Sign Reference</td><td>G5128</td></tr> <tr><td>Width (mm)</td><td>850</td></tr> <tr><td>Height (mm)</td><td>750</td></tr> <tr><td>Material</td><td>Class RA2</td></tr> <tr><td>Background</td><td>White</td></tr> <tr><td>Border</td><td>Red</td></tr> <tr><td>Legend</td><td>Black</td></tr> </table>	Signing Project	QUIET ROUTES – GLENCOE	Sign Reference	G5128	Width (mm)	850	Height (mm)	750	Material	Class RA2	Background	White	Border	Red	Legend	Black	<p>IMAGE 1 - PROPOSED YELLOW PAINT RUMBLE STRIPS EXAMPLE</p>																
Signing Project	QUIET ROUTES – GLENCOE																																
Sign Reference	G5128																																
Width (mm)	850																																
Height (mm)	750																																
Material	Class RA2																																
Background	White																																
Border	Red																																
Legend	Black																																
<table border="1"> <tr><td>Signing Project</td><td>QUIET ROUTES – GLENCOE</td></tr> <tr><td>Sign Reference</td><td>G5121</td></tr> <tr><td>Width (mm)</td><td>850</td></tr> <tr><td>Height (mm)</td><td>750</td></tr> <tr><td>Material</td><td>Class RA2</td></tr> <tr><td>Background</td><td>White</td></tr> <tr><td>Border</td><td>Red</td></tr> <tr><td>Legend</td><td>Black</td></tr> </table>	Signing Project	QUIET ROUTES – GLENCOE	Sign Reference	G5121	Width (mm)	850	Height (mm)	750	Material	Class RA2	Background	White	Border	Red	Legend	Black																	
Signing Project	QUIET ROUTES – GLENCOE																																
Sign Reference	G5121																																
Width (mm)	850																																
Height (mm)	750																																
Material	Class RA2																																
Background	White																																
Border	Red																																
Legend	Black																																
<table border="1"> <tr><td>Signing Project</td><td>QUIET ROUTES – GLENCOE</td></tr> <tr><td>Sign Reference</td><td>G5131</td></tr> <tr><td>Width (mm)</td><td>850</td></tr> <tr><td>Height (mm)</td><td>750</td></tr> <tr><td>Material</td><td>Class RA2</td></tr> <tr><td>Background</td><td>White</td></tr> <tr><td>Border</td><td>Red</td></tr> <tr><td>Legend</td><td>Black</td></tr> </table>	Signing Project	QUIET ROUTES – GLENCOE	Sign Reference	G5131	Width (mm)	850	Height (mm)	750	Material	Class RA2	Background	White	Border	Red	Legend	Black																	
Signing Project	QUIET ROUTES – GLENCOE																																
Sign Reference	G5131																																
Width (mm)	850																																
Height (mm)	750																																
Material	Class RA2																																
Background	White																																
Border	Red																																
Legend	Black																																

Figure 2 – Route signage and markings

Non-prescribed gateway and gateway repeater signs were approved on 4 April 2023 for the Glencoe Quiet Route by Scottish Ministers, in exercise of the powers conferred upon them by sections 64 and 65 of the Road Traffic Regulation Act 1984 and of all other powers enabling them in that behalf. The approved gateway and gateway repeater sign designs are shown at Figure 3.



Figure 3 – Approved non-prescribed gateway signage design

Detailed drawings outlining the position of gateway signs, gateway repeater signs, speed roundels, warning signs and road/surface markings have been produced for the pilot project. Due to the length of the route the drawings are split into 14 separate sections (14 sheets) that show detail of the signs and (or) road markings to be installed at specific points on the route from the River Coe Bridge to the A82, see Figures 4 – 18.

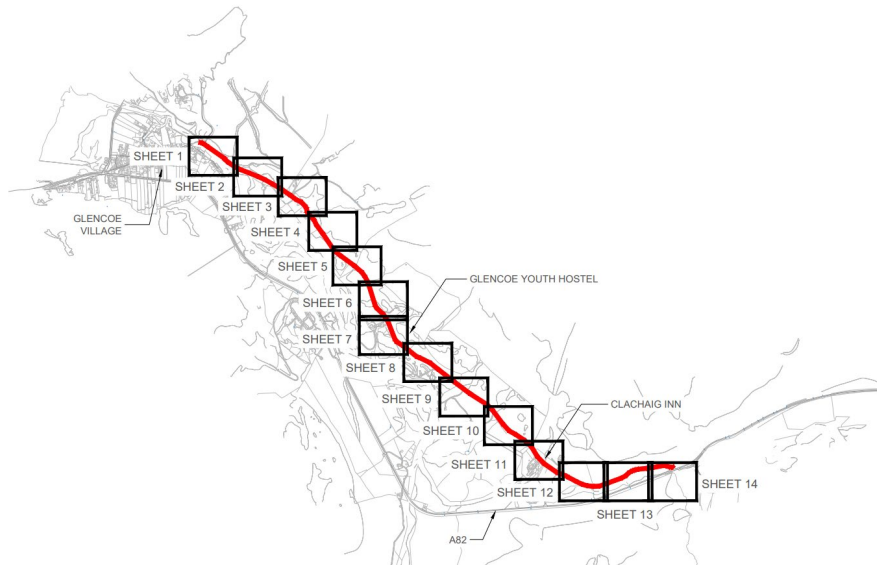


Figure 4 – Route split in 14 sheets

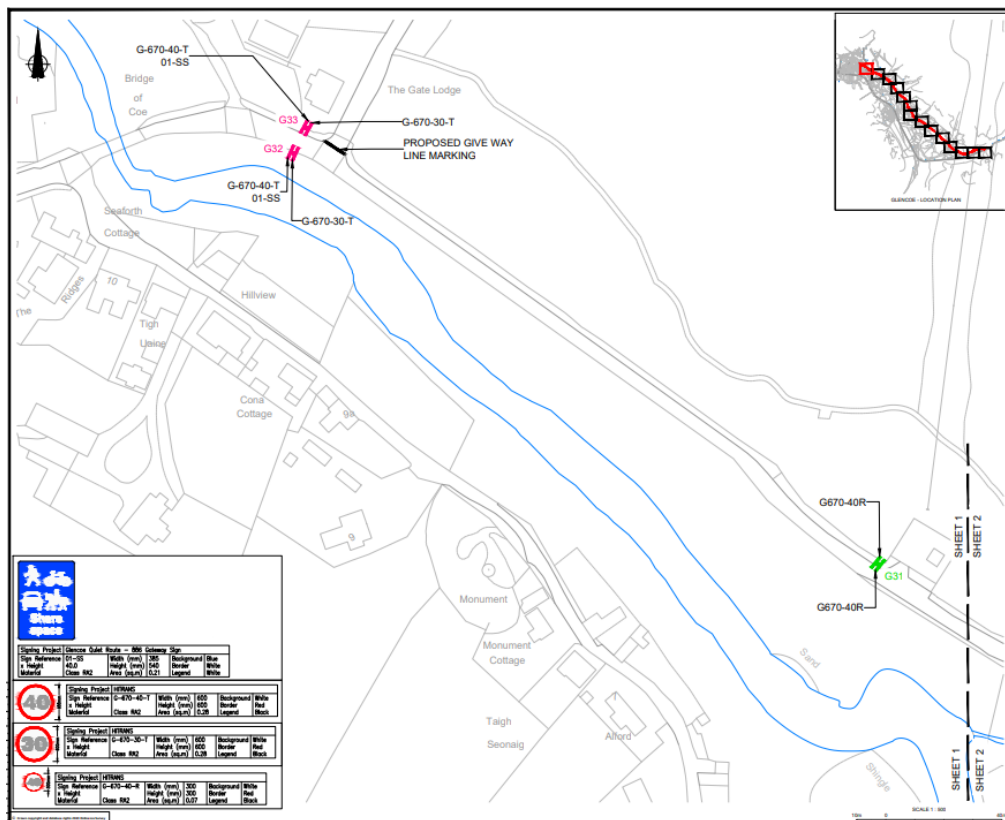


Figure 5 – Route Design Sheet 1 (River Coe Bridge)

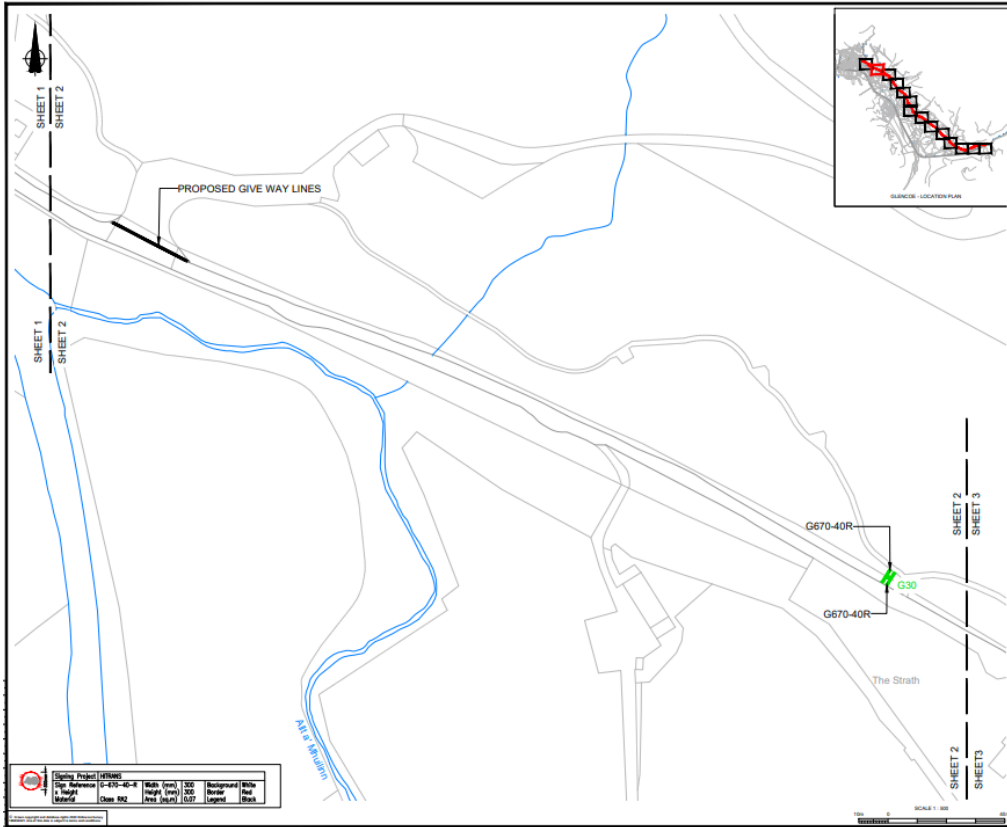


Figure 6 – Route Design Sheet 2

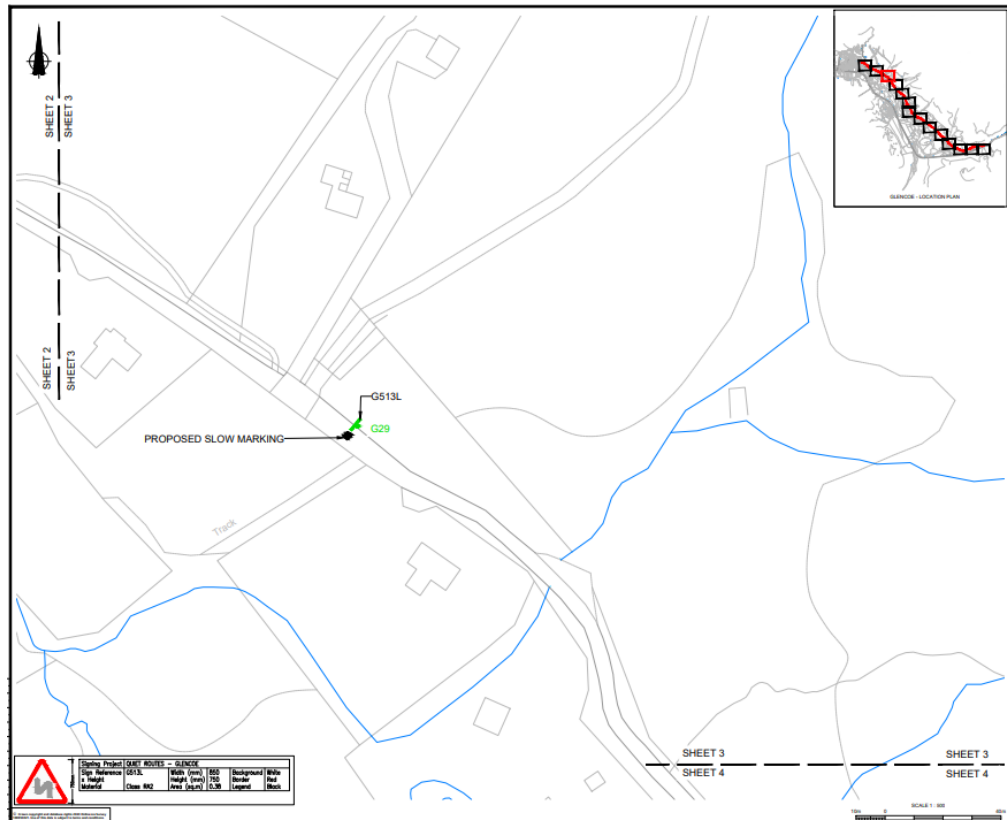


Figure 7 – Route Design Sheet 3

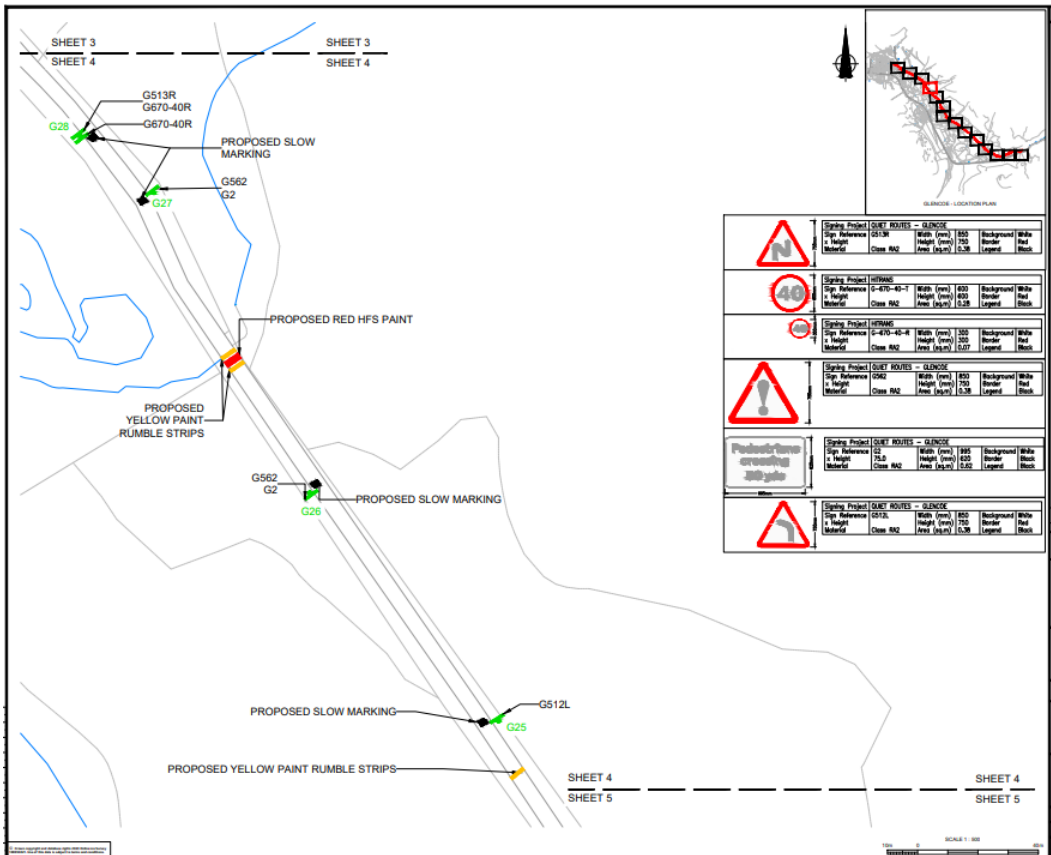


Figure 8 – Route Design Sheet 4

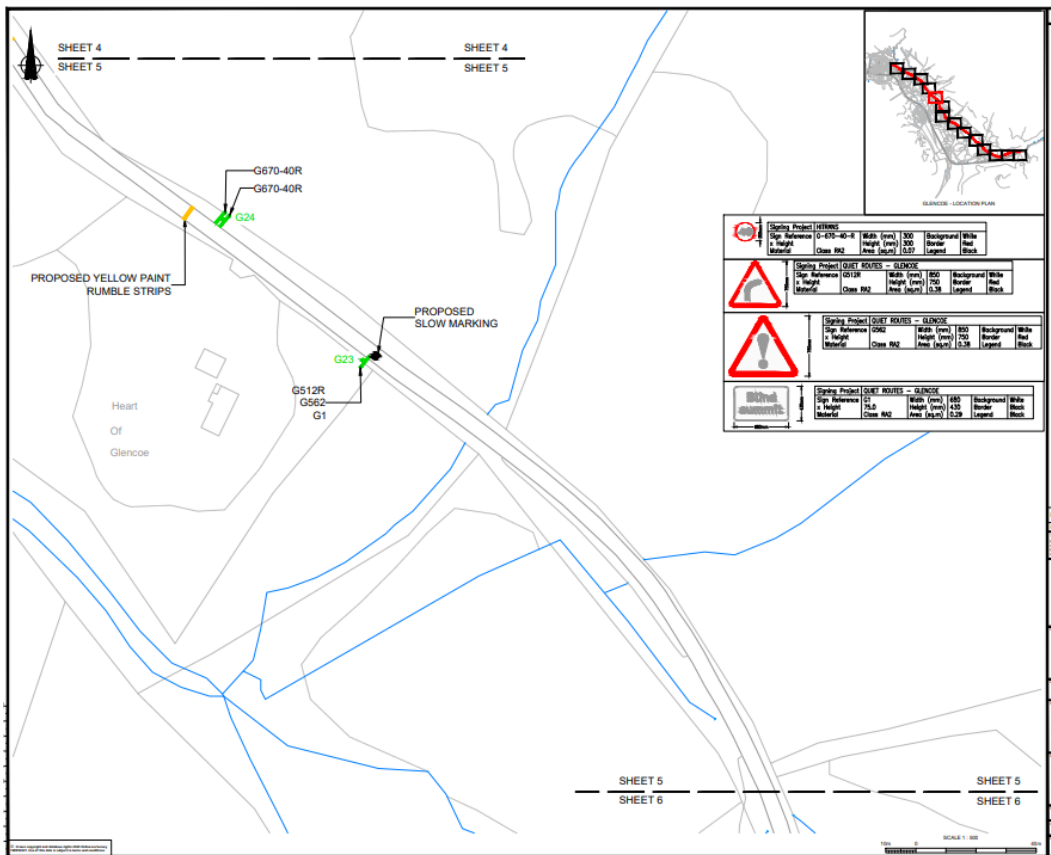


Figure 9 – Route Design Sheet 5

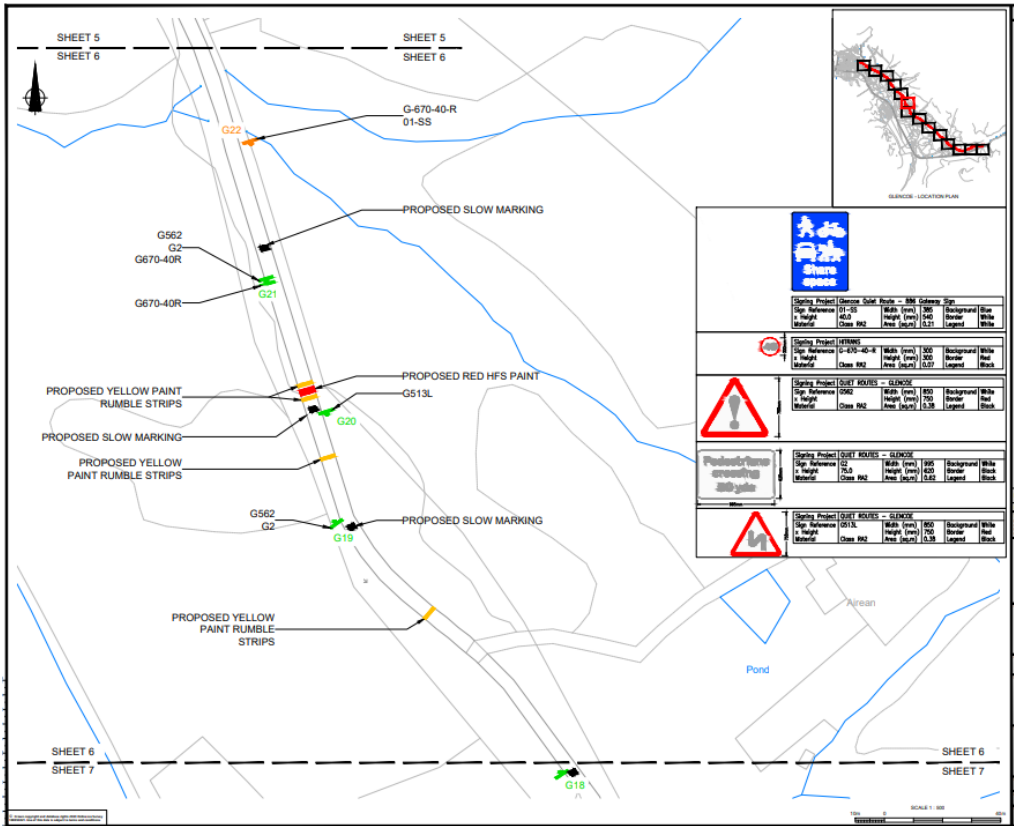


Figure 10 – Route Design Sheet 6

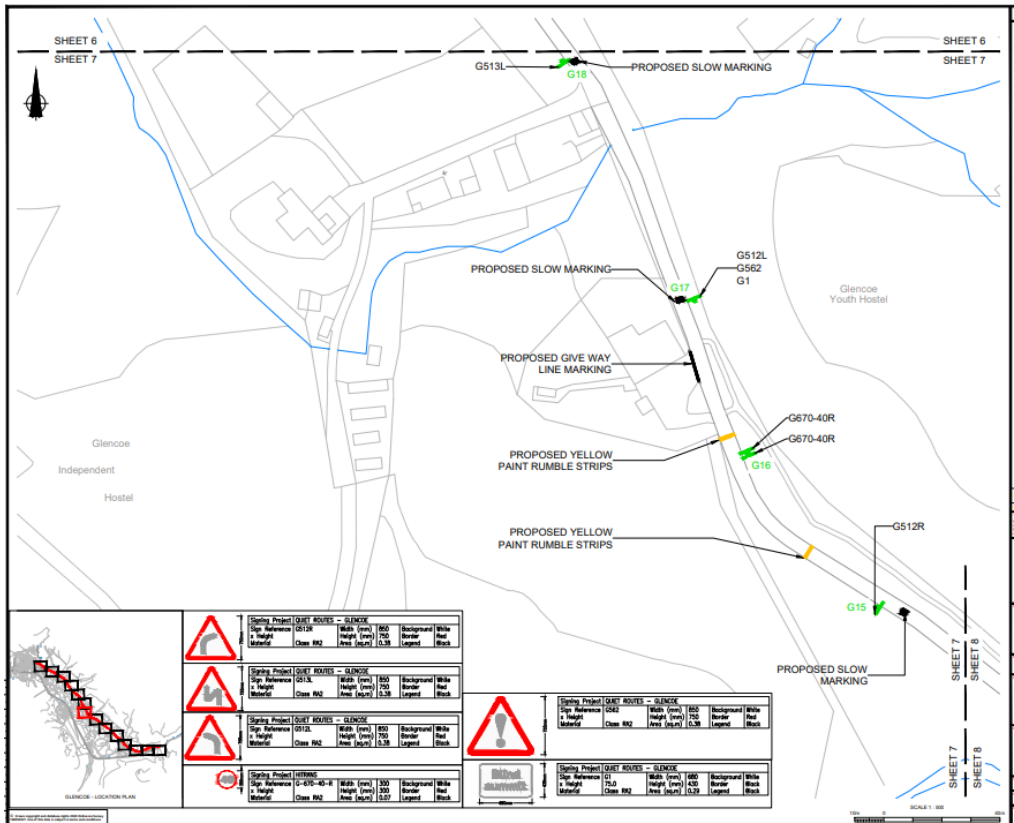


Figure 11 – Route Design Sheet 7

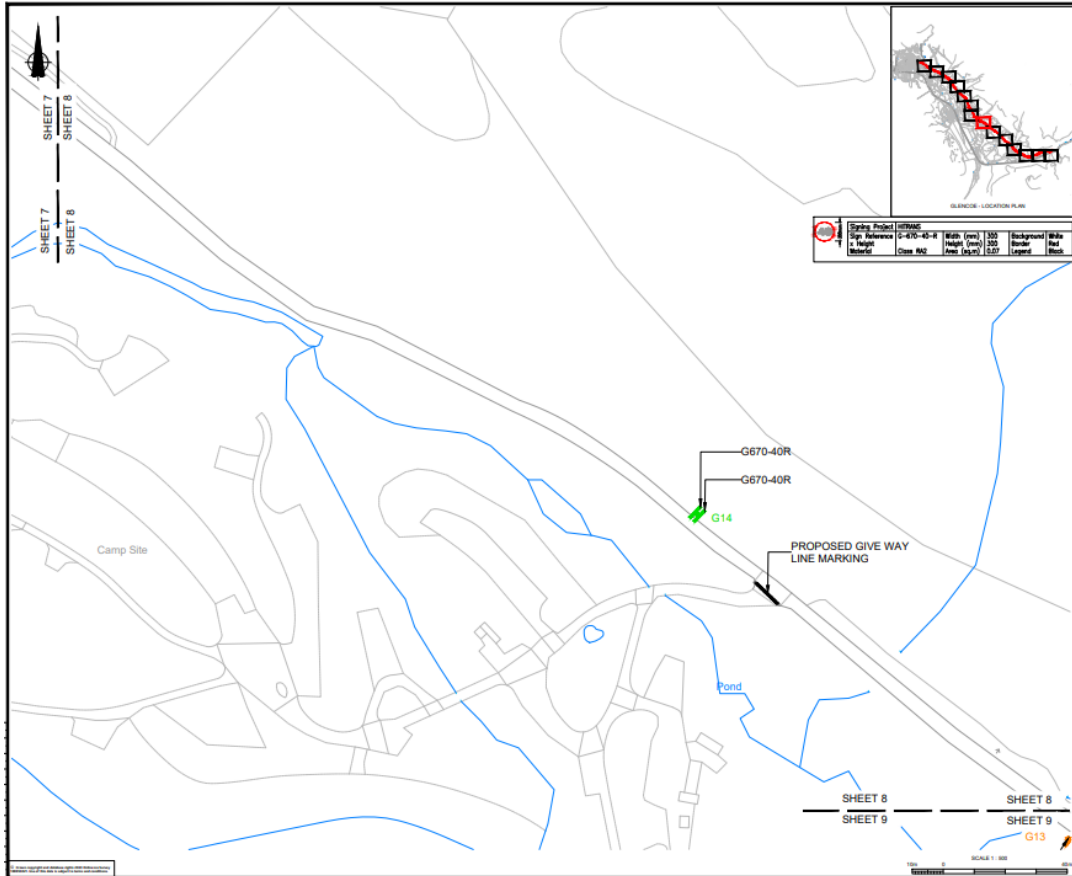


Figure 12 – Route Design Sheet 8

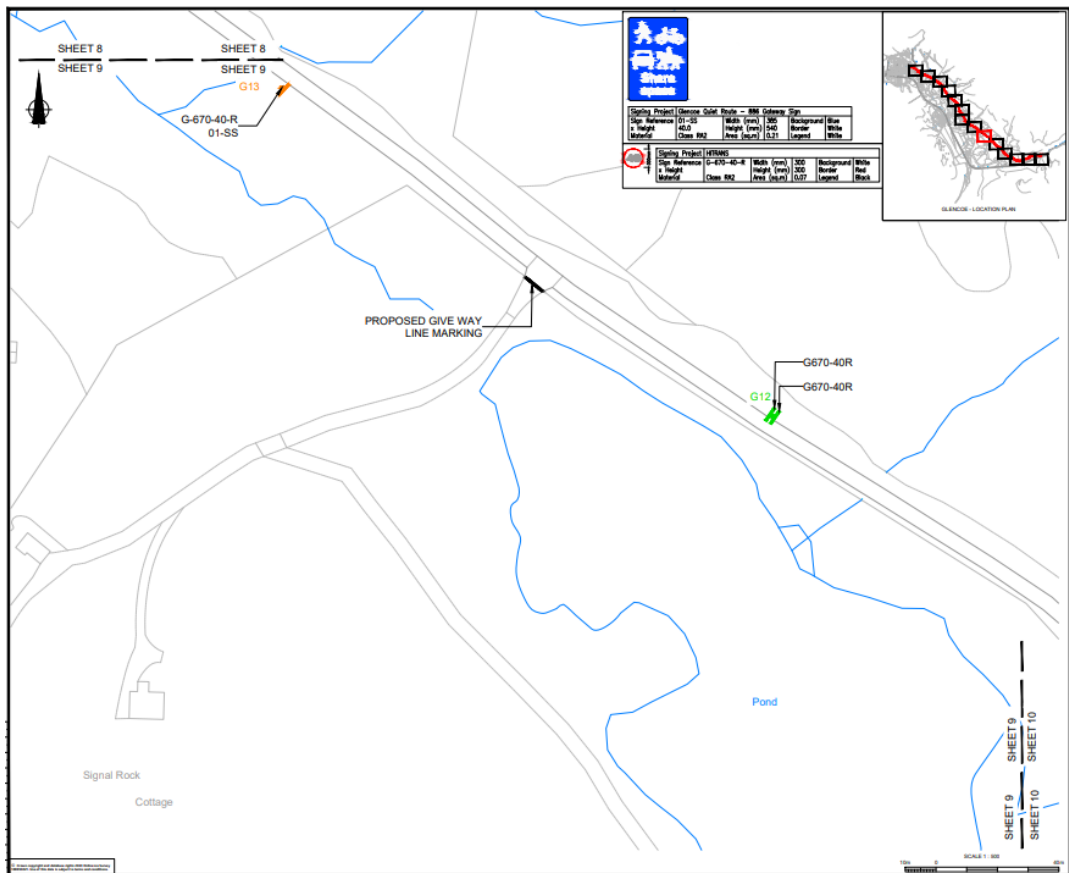


Figure 13 – Route Design Sheet 9

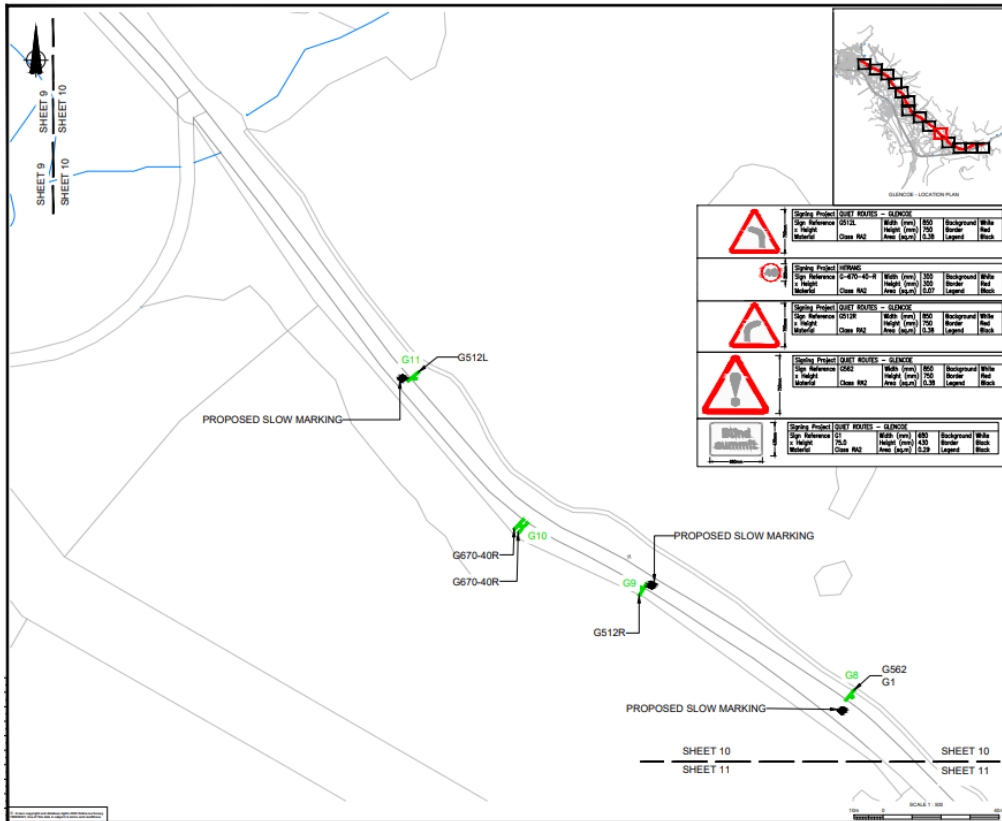


Figure 14 – Route Design Sheet 10

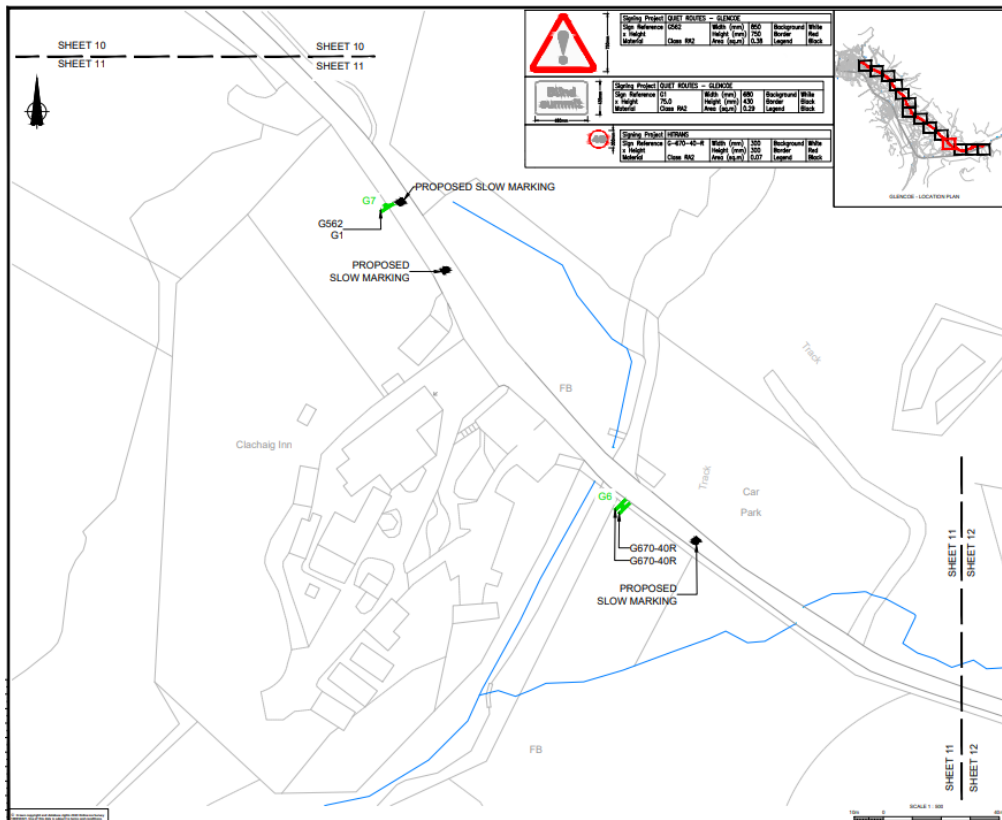


Figure 15 – Route Design Sheet 11

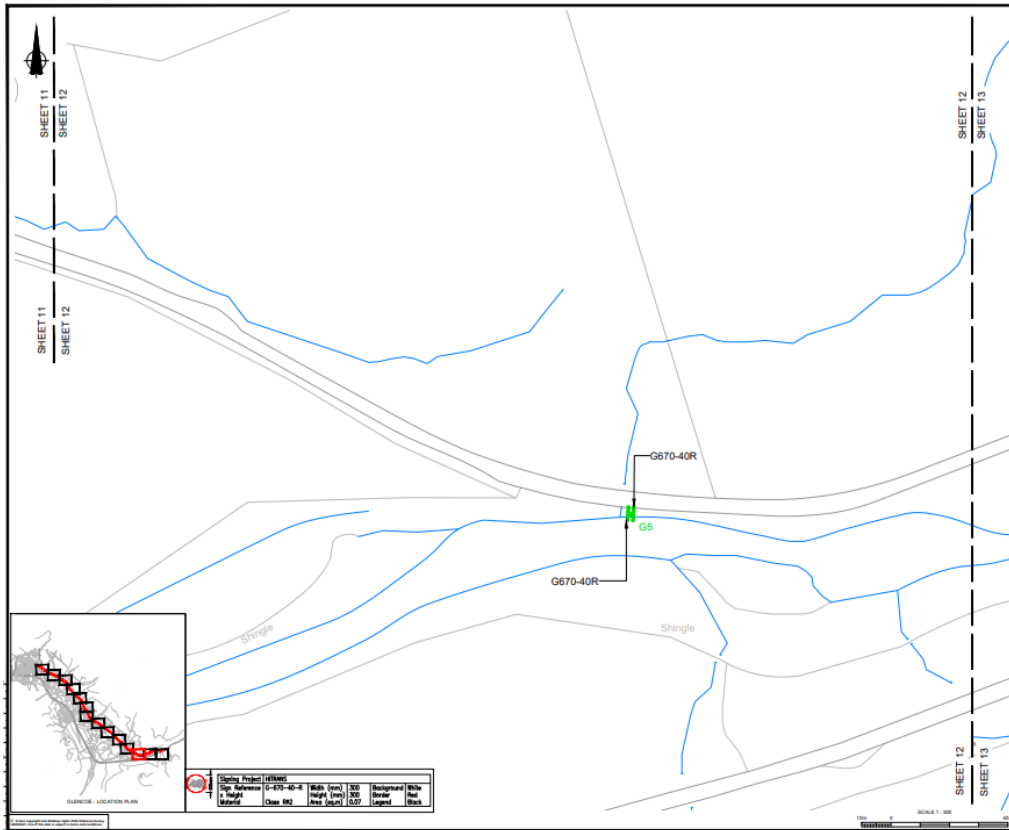


Figure 16 – Route Design Sheet 12

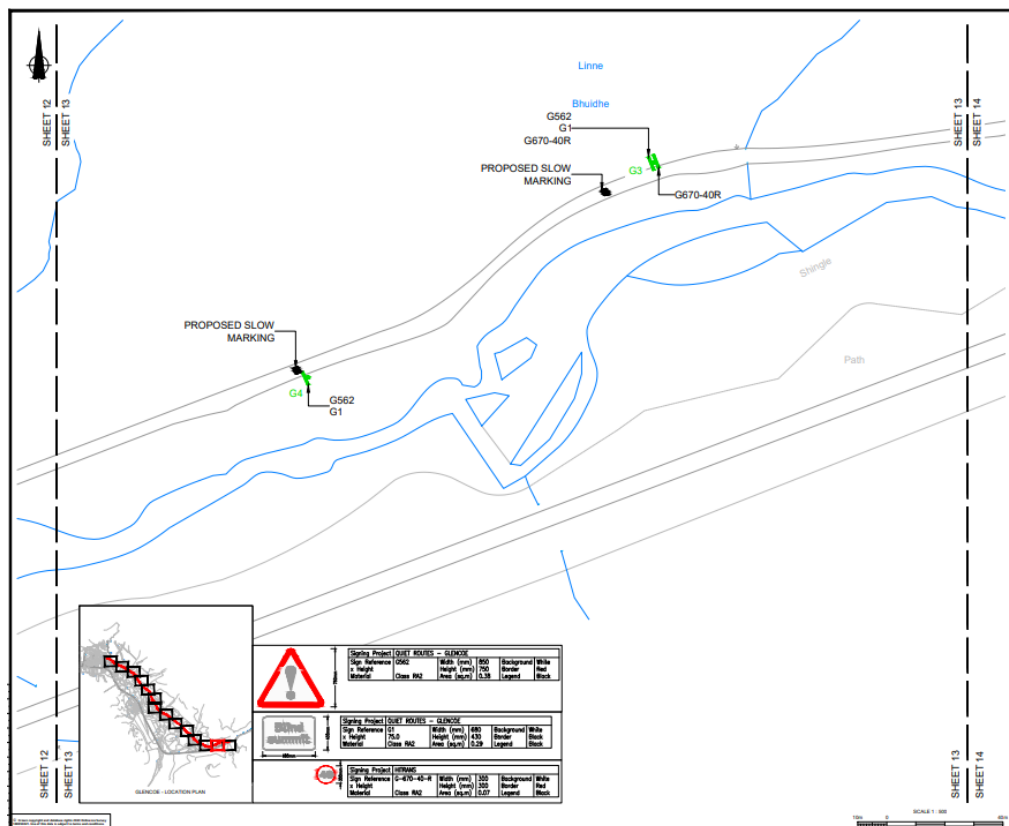


Figure 17 – Route Design Sheet 13

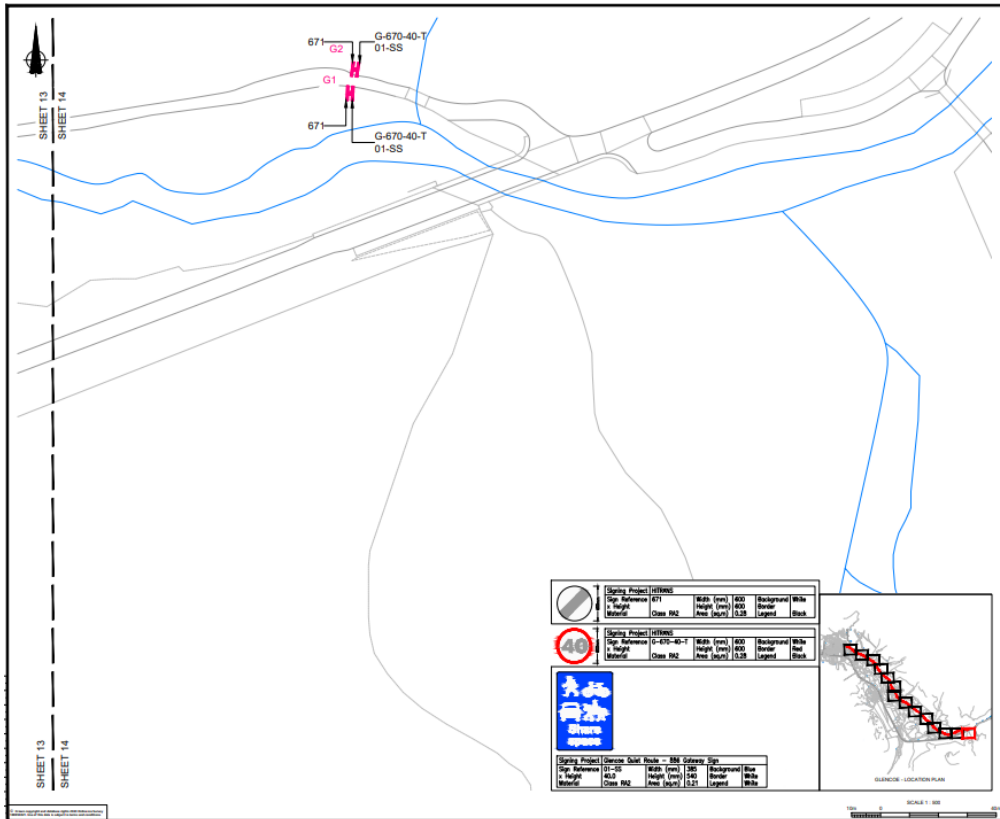


Figure 18 – Route Design Sheet 14

Glencoe Quiet Route - Community Engagement

An online engagement portal was developed for preliminary community engagement at the early stages of the project to (i) provide an introduction and background to the Quiet Routes project and the concept of Quiet Routes, (ii) highlight and inform readers of the benefits of active travel, (iii) outline the proposed route, and (iv) accommodate active travel behaviour and spatial surveys to gather feedback on the proposals from individuals within the local community. Links to the engagement portal and Active Travel Behaviour Survey were provided to the Glencoe and Glen Etive Community Council to share with local individuals, businesses through their Facebook page.

The Active Travel Behaviour Survey comprised sixteen questions to capture the current active travel behaviour of local individuals to inform the design and set the foundational data for route evaluation; a similar survey will be enrolled during the pilot period to capture the potential behaviour change as a result of the introduction of the quiet route. In Glencoe there was 20 public survey responses from varying age groups and employment statuses, of which:-

- 20% of respondents confirmed having a long-term illness or disability;
- Within the average household an average of 1.94 people have access to a bicycle;
- 25% of survey respondents reported an increase in their walking/cycling activity in comparison to pre-Covid-19 activity levels;
- 16% of those who commute to their place of work do so by walking with the remainder using car/van;
- 80% of those who undertake school run/picking-up or dropping children at school do so by walking with the remainder travelling by car/van;
- 90% of respondents travel by car/van for essential and non-essential shopping and 5% travel by walking and 5% by bicycle (or alternative form of active travel);
- 30% of survey participants use a form of active travel to access healthcare (GP/Pharmacy);
- 90% of survey participants are very likely or likely to use a quiet route, while only 10% are very unlikely to use a quiet route;
- Of the respondents, 55% said they do not feel safe walking/cycling/horse riding on local roads;
- Slower speeds of traffic in the area was highlighted to be the most important factor individuals are looking for in the area.

Glencoe Primary School was contacted to complete a hands-up survey where, 19 pupils took part in the survey. It was identified that 61% of pupils travel to school by car with almost 4 of every 5 pupils being accompanied by a parent/guardian. While only 34% of pupils utilise active travel to travel to school, 88% of pupils would prefer to walk, cycle, or scoot than travel by car or bus.

An open public event was held to engage with the local community on 24th October 2022 at St Mary's Church Hall, 12C Lower Carnoch, Glencoe, Ballachulish, PH49 4HS. Around 20 individuals attended that included a representative from National Trust for Scotland (NTfS), local business owners and residents from Glencoe and adjacent to the proposed route who were mostly supportive of the project and Quiet Route concept and introduction of a pilot scheme. The NTfS said that they welcomed projects that encourage more individuals to travel by active travel to their Glencoe land and managed path networks. There were a few general concerns raised about the route that are answered below:

- 'There are occasions where the A82 is closed, and all vehicles are diverted along the road to access Glencoe Village'. It is considered that improved route signing, road markings and a reduced speed limit (40mph) associated with Quiet Routes will add to safer vehicle use during times where traffic diversion is necessary and will not have a detrimental impact upon the roads function as a diversionary route;
- 'Concern about cycling near people with prams on the path adjacent to the road.' It is considered that the introduction of a quiet route will encourage more confident cyclists to use the road surface and not the adjacent footpath, therefore, reducing any potential for conflict;
- 'Concerns were raised about access to businesses along the route including the hostel, Clachaig Inn and Red Squirrel Campsite.' Quiet Route design is focused on altering road user behaviours and making improvements to the road environment through route signing, road markings and a reduced speed limit (40mph) and not altering access arrangements to business or residential land.