

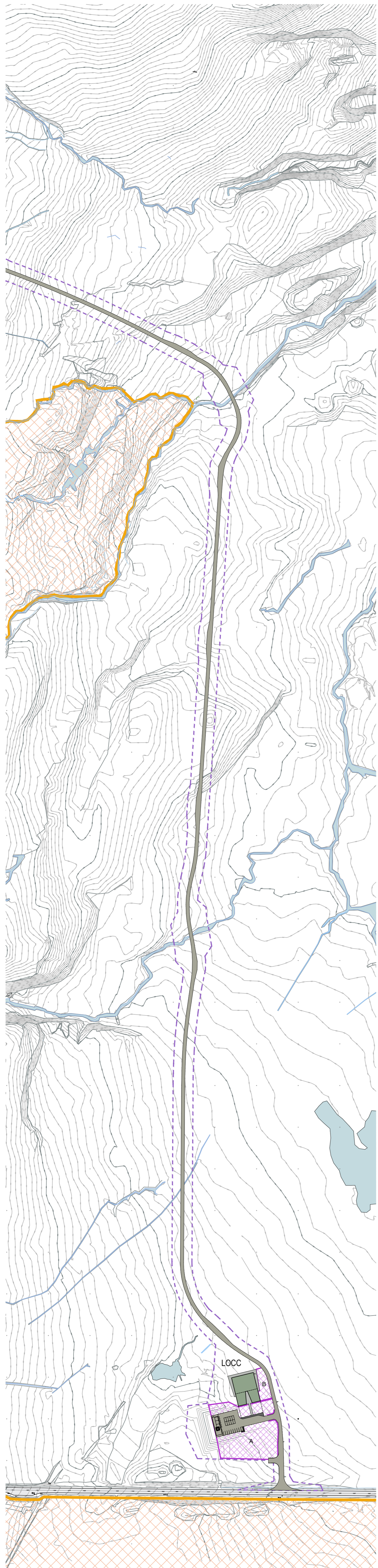
DATE	REVISION	REV	DRW	CHK
20.03.24	ISSUED FOR PLANNING	1.0	AA	BB
09.07.24	CONSTRUCTION ZONE EXTENT UPDATED, RE-ISSUED FOR PLANNING	2.0	AA	BB
23.08.24	CONSTRUCTION ZONE EXTENT UPDATED, RE-ISSUED FOR PLANNING	3.0	LB	CH
28.08.24	KEY NOTES UPDATED, RE-ISSUED FOR PLANNING	4.0	LB	CH
28.08.24	KEY NOTES UPDATED, RE-ISSUED FOR PLANNING	5.0	LB	CH

KEY

SSSI / SPA / SAC / RAMSAR ENVIRONMENTAL AND LANDSCAPE DESIGNATIONS

CONSTRUCTION ZONE EXTENT OF UP TO 20m FROM WATERCOURSE CROSSINGS, AND UP TO 10m FROM ALL OTHER INFRASTRUCTURE




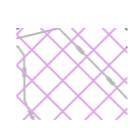
LSIF - LAUNCH SITE INTEGRATION FACILITY
 LOCC - LAUNCH OPERATIONS CONTROL CENTRE

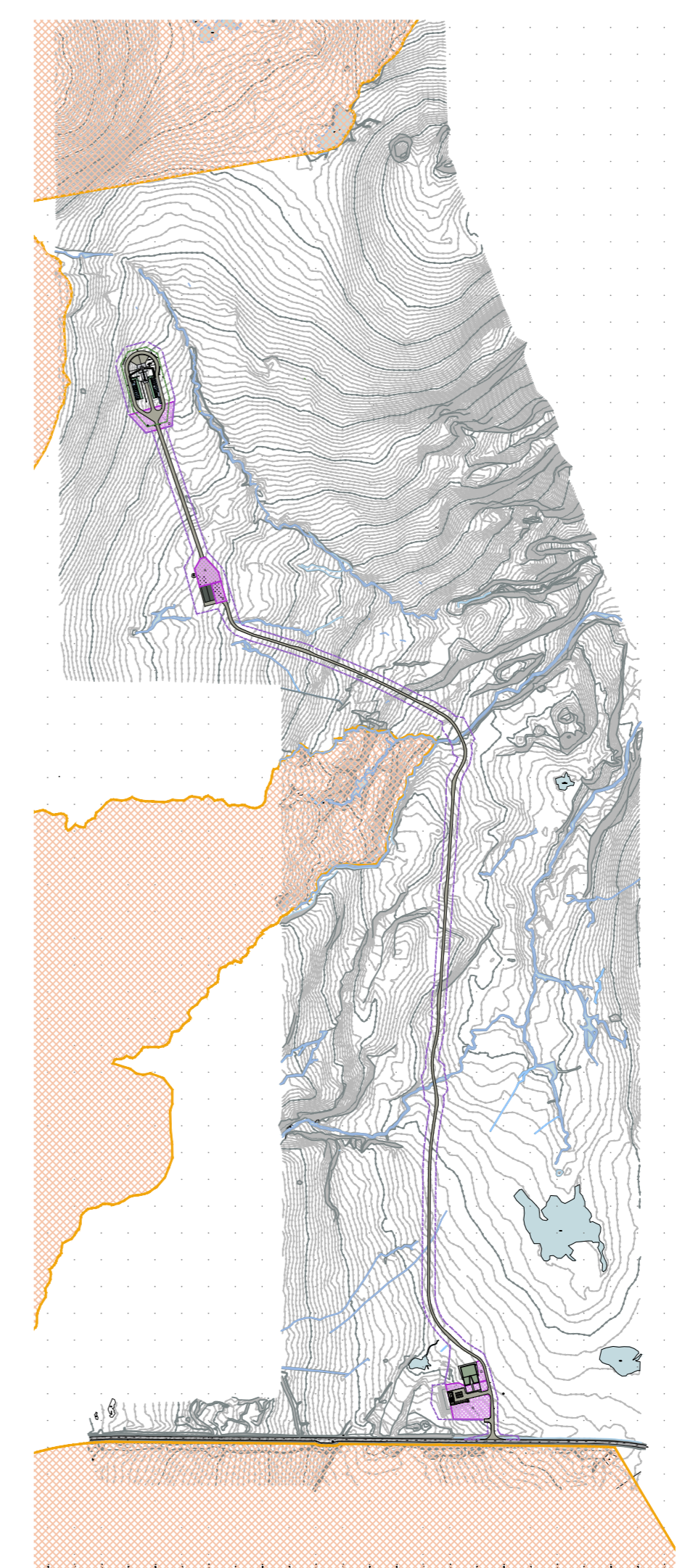


EXTENT OF WORKS PLAN - 1:2500 AT A1



EXTENT OF WORKS PLAN - 1:2500 AT A1

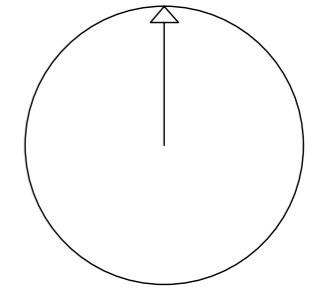
- LOCC**
-  A - CONTRACTORS COMPOUND, CABINS, PARKING AND MATERIALS
 -  B - MATERIAL STORAGE AREA
- LSIF AND LAUNCH PAD COMPLEX**
-  A - CONTRACTORS COMPOUND, CABINS, PARKING AND MATERIALS
 -  B - MATERIAL STORAGE AREA



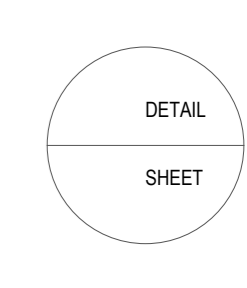
EXTENT OF WORKS SITE PLAN - NTS

Keyplan

North Arrow



Detail Symbol



Consultants

Drawn	Date	09.07.24
Checked	Date	09.07.24

Scale 1:2500 @ A1

Client Sutherland Spaceport Ltd

Project SUTHERLAND SPACEPORT

Drawing Title EXTENT OF WORKS PLAN

Sheet Status A3 - APPROVED FOR STAGE 3

Project No. IAGG19-0030

Drawing No. EXT-WORKS-001 Rev. 5.0